

THE ARTISTS

Ann and Dennis are presenting a new collection of their watercolours which to them have been a joy and inspiration to paint.

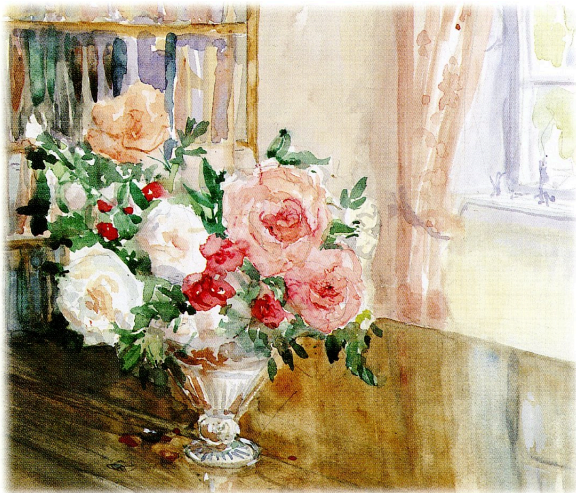
In the last two years they have been travelling in France, Greece and Italy as well as in England. Following the example of the French Impressionists they have, wherever possible, painted directly from the subject to try and capture its immediate light and atmosphere. About 90 works will be shown, including some flower paintings as well as the landscapes.

Their work is represented in many private collections throughout the world. They have exhibited in several London Galleries including the Mall Galleries, the Royal Watercolour Society and at the "Venice in Peril" Exhibition.



*Dennis Harrison
On the Lot (Detail)
9x8"*

Their studio is in Bampton,
Oxfordshire.
Tel: 01993 850455



*Ann Manly
Roses in the Library (Detail)
10x13 1/2"*

ANN & DENNIS 2000

new paintings by

ANN MANLY
DENNIS HARRISON

you are invited to the

PRIVATE VIEW

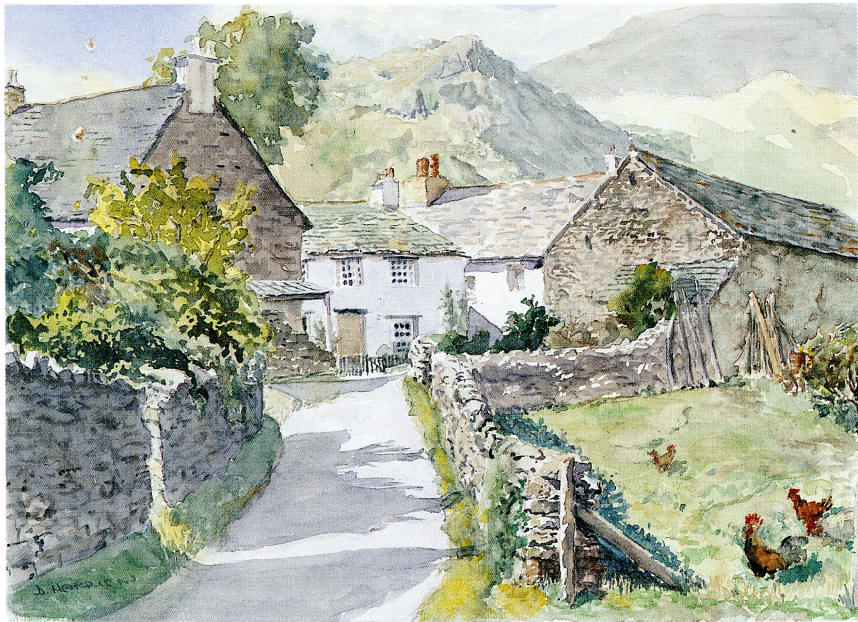
at

The Gallery, Market Square, Bampton, Oxon
on Sunday 5th November 2000
11am to 1pm Wine

The Exhibition continues until 26th November
Tuesday-Sunday 10.30am - 12.30pm and 2pm - 4pm

Closed Monday

Gallery Tel: 01993 850137



*Dennis Harrison
In Borrowdale
Lake District
9x12 1/2"*



*Ann Manly
Approaching Campo San
Zaccaria
Venice
10x7 1/2"*

ANN & DENNIS
2000

*Ann Manly
Gondola Boatyard, Venice
12x18"*



*Dennis Harrison
Courtyard,
St. Cirq La Popie,
Lot Valley, France
9 1/2 x 16 1/2"*



Ann Manly
"Come On Girls, The Gate's Open Again"
France
10x16"

Dennis Harrison
Grand Canal and Pescheria
11½x17½"





Ann Manly
Sunday Lunch in the Dordogne
12x17 1/2"



Dennis Harrison
Palazzo Da Lezze
Grand Canal
9x13"

ANN & DENNIS 2000
new paintings by
ANN MANLY and DENNIS HARRISON

NO.	TITLE	£	NO.	TITLE	£
1*	IN THE CALLE LOTTO	170	31	ULLSWATER BOATHOUSE, LAKE DISTRICT	220
2	BOATS BY THE DORDOGNE	210	32	ON THE RIVER LOT	180
3*	"COME ON GIRLS, THE GATE'S OPEN!"	320	33	IN BORROWDALE, LAKE DISTRICT	260
4	REFLECTIONS IN RIO SAN BARNABO	180	34	COURTYARD, ST. CIROUE LA POPIE, LOT	190
5	TOBACCO DRYING, LOT VALLEY	140	35	WHITESYKE, NETHER WASDALE, LAKE DISTRICT	150
6	RIO DI SAN GIOVANNI NOVO	170	36	GRANGE IN BORROWDALE, LAKE DISTRICT	160
7*	VIEW FROM LOUBRESSAC, DORDOGNE	280	37	RIO DI SAN STAE	150
8	CONVERSATION IN RIO DI SAN APONAL	170	38	IN SOUTHWOLD HARBOUR	160
9	THE HILL, BURFORD	180	39	CHICKENS AT CARENNAC	150
10	APPROACHING MARCILLHAC, CELE VALLEY	240	40	MOORED GONDOLAS, SAN MOISE	230
11	PORCH AT MONTEILS, CELE VALLEY	170	41	CENEVRIER, LOT VALLEY	190
12*	FLOWER SELLER, RIO TERRA LISTA DA SPAGNA	140	42	IN RIO DI SAN ZAN DEGOLA	220
13	THE CA' D'ORO FROM THE PESCHERIA	550	43	CARENNAC, DORDOGNE	280
14*	FROM A ROOM WITH A VIEW IN FLORENCE	650	44*	GRAND CANAL	320
15	EVENING SUN, CARENNAC, DORDOGNE	220	45*	APRIL SHOWER IN ST. MARK'S SQUARE	290
16	EVENING, RIO DEL MEGIO	220	46*	LOW TIDE, EVENING, WOODBRIDGE, SUFFOLK	310
17*	OLD COTTAGES, EASTLEACH	280	47	PONTE DEI APOSTOLI	300
18*	SUNDAY MORNING, PIAZZETTA	450	48	LOUBRESSAC, DORDOGNE	330
19*	MUSICIANS AT FLORIAN'S, ST MARK'S SQUARE	280	49*	DORDOGNE VINEYARD	420
20*	CAPUCCINO IN RIO SAN PROVOLO	280	50*	GONDOLA BOATYARD, SAN TREVASO	420
21	LARCHES AT TROUTBECK, LAKE DISTRICT	190	51	BOATS ON THE LOT AT LARNAGOL	150
22*	BURFORD WATER MEADOWS	150	52	PALAZZO FOSCARI, GRAND CANAL	190
23	PALAZZO DE LEZZE, GRAND CANAL	240	53*	CHATEAU NEAR FONTAINE DU CAUSSES, LOT	190
24*	BRIDGE ON THE WINDRUSH NEAR BOURTON	150	54*	PICNIC BY THE RIVER LOT	280
25*	ALDEBOROUGH BOATS & SOUTHWOLD HUTS	210	55	COTSWOLD DOORWAY (LITTLE BARRINGTON)	150
26*	AT ESPAGNAC, CELE VALLEY	320	56*	SUMMER FLOWERS IN A WHITE JUG	250
27*	AUTUMN BONFIRE NEAR EASTLEACH	140	57*	ROSES IN THE LIBRARY	220
28	RIO DEI FUSERI	170	58*	JESSICA ROSES	250
29*	SHOPPING IN VENICE	150	59	DORDOGNE DOORWAY (CARENNAC)	150
30*	QUIET AFTERNOON IN LARNAGOL, LOT	280	60	CHATEAU DE CAVRELOUR, DORDOGNE	190

NO.	TITLE	£	NO.	TITLE	£
61*	OFF THE BEATEN TRACK, MALCANTON	200	79*	APPROACHING CAMPO SAN ZACCARIA	280
62*	MISTY MORNING AT MONTEILS, CELE VALLEY	450	80	WASHDAY, CORTE SAN TOMA	160
63*	THE OLD WILLOW TREE, BAMPTON	290	81*	EVENING LIGHT ON THE THOLOS AT DELPHI	150
64*	SAN GIORGIO & THE DOGANA	450	82*	SUNDAY LUNCH IN THE DORDOGNE	400
65*	VENETIAN GARDEN	520	83	GRAND CANAL & PESCHERIA	420
66*	THE DORDOGNE NEAR SOUILLAC	300	84	IN THE METEORA, NORTHERN GREECE	190
67*	STREET CAFE, SOUILLAC, DORDOGNE	350	85*	ROUSSANA MONASTERY, METEORA, GREECE	170
68	CLUN, SHROPSHIRE	250	86	THE GRAND CANAL WITH THE SALUTE	420
69	MAYRENNE FROM THE DORDOGNE	250	87*	APPROACHING VENICE AT NIGHT	550
70*	RENDEZVOUS BY THE DORDOGNE	280	88	RATTLE GILL, AMBLESIDE, LAKE DISTRICT	280
71*	STILL EVENING, DORDOGNE	320	89	QUIET MORNING, RIO DI FRANCISCO	180
72*	SNOW AT LITTLE BARRINGTON	160	90*	FARM AT TAURIAC, DORDOGNE	250
73	ULLSWATER FROM THE SANDWICK PATH	220	91*	BLUEBELLS ON THE PATH TO HELVELLYN	250
74	CHATEAU DE SALVAGNAC, LOT VALLEY	170	92	LITTLE BARRINGTON, GLOS	180
75	IN RIO SAN LORENZO	170	93*	GRAND CANAL FROM THE ACCADEMIA	320
76	CORTE PETRIANA	220	94	AT MONTSALLES, LOT VALLEY	210
77	REFLECTIONS IN THE RIO MALPAGA	130	95*	MISTY MORNING ON THE GRAND CANAL	380
78*	FRENCH BALCONIES	300			

* Indicates the work is by Ann Manly, the remainder being by Dennis Harrison.

**Pictures to be collected on Sunday 26 November 2000 between 4.00pm and 5.00pm
or Tuesday 28 November 2000 between 10.30am and 12.30pm.**

If this is not convenient, please telephone the artists on 01993 850455 to arrange collection.