



**Your**

**council tax**

**explained**

County council services and  
how your money is spent

**2024/25**



**OXFORDSHIRE  
COUNTY COUNCIL**





**Councillor Liz Leffman**  
Leader,  
Oxfordshire County Council

### Dear resident,

The past year has not been an easy one with residents and businesses working hard to cope with cost of living issues.

All local authorities have also faced rising costs, inflationary and demand-led pressures. We continue to experience these most across services to support children and young people; in social care and care placements for adults and children; and in our response to a national shortage of social care workers. We also have a growing and ageing population.

All of these pressures combined amount to approximately **£27 million** for 2024/25. Government

grants and funding are simply not keeping pace with growth in demand and costs. Government has, however, acknowledged the difficulties councils are facing and has provided extra funding for 2024/25, which for the county council equates to **£4.8m**.

We have still faced some difficult choices in setting a balanced budget. Our overall net budget will rise to more than **£611m** and we have had to find **£13.9m** in savings. These include reducing the operating costs of our buildings and lowering our reliance on agency staff.

The majority of our overall funding comes from council tax. We are

raising this by **4.99 per cent** in 2024/25, **two per cent** of which must be spent on adult social care.

However, our budget also invests **£10.6m** in the things you think we should focus on. To do this, we listened carefully to what matters most to you through our residents' survey, engagement events and our budget consultation. This included the use of our new online budget simulator, where you could weigh up choices, like councillors, to set a balanced budget.

This means we'll continue to protect those in need, while investing in roads and improving services for children and families, particularly those with special educational needs and disabilities.

## About the council

Oxfordshire County Council provides 80 per cent of local government services by expenditure, including adult and children's social care, some education services, public health, fire and rescue, libraries and museums, roads, trading standards, waste disposal and recycling.

### Our vision

To lead positive change by working in partnership to make Oxfordshire a greener, fairer and healthier county.



**OXFORDSHIRE  
COUNTY COUNCIL**

## To achieve our vision, we will:

- Put action to address the climate emergency at the heart of our work.
- Tackle inequalities in Oxfordshire.
- Prioritise the health and wellbeing of residents.
- Support carers and the social care system.
- Invest in an inclusive, integrated and sustainable transport network.
- Preserve and improve access to nature and green spaces.
- Create opportunities for children and young people to reach their full potential.
- Play our part in a vibrant and participatory local democracy.
- Work with local businesses and partners for environmental, economic and social benefit.

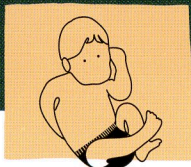


## Working for you

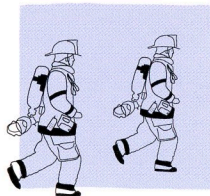
### Our services

We are proud to provide and support a huge range of services that enhance and improve the lives of people across our communities.

**Here are just a few of the services we provided last year** (figures from January - December 2023):



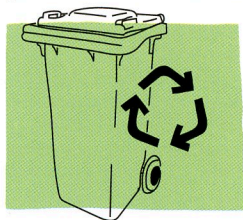
Registered  
**7,606** births.



Attended **6,365**  
fire and rescue  
service call outs.



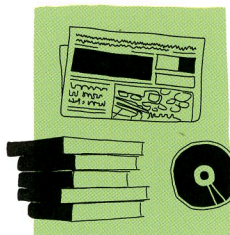
We cared for  
**795** children.



Managed **278,857**  
tonnes of household  
waste, of which  
**57.2 per cent** was  
recycled, reused or  
composted.



Repaired  
**38,686**  
potholes.



Loaned over  
**3,383,507** items  
and resources to our  
library customers.



Supported  
on average  
**6,526** people daily  
with ongoing adult  
social care.

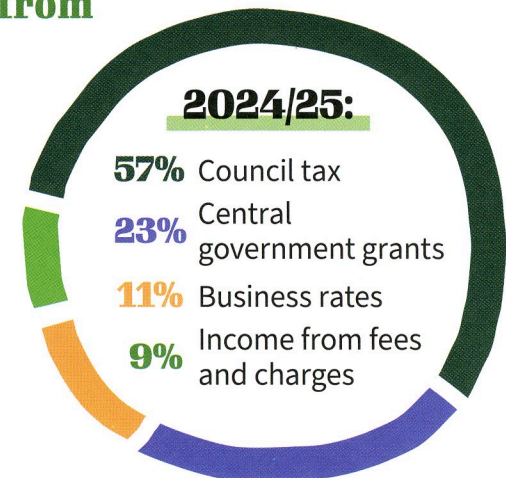
## Managing our budget

### Where the money comes from

For 2024/25, **57 per cent** of the county council's funding for services will come directly from council tax, with the rest coming from charging for services, business rates and government grants.

This has increased over the last ten years as central government has cut grants to local government.

In 2010/11, **28 per cent** came from council tax.

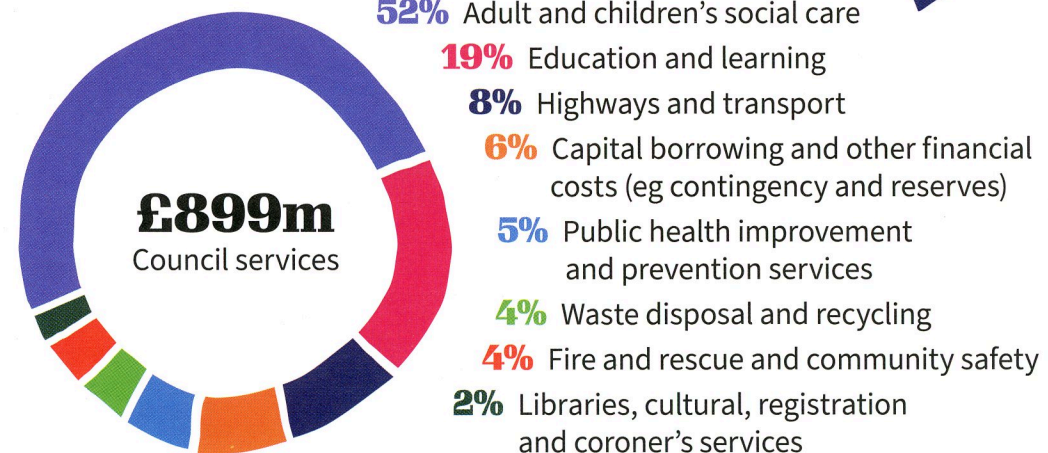


### What we spend on council services

In 2024/25, the council plans to spend **£899 million** on services – our gross expenditure budget. In addition to the education funding shown below, we will also spend **£232m** on maintained schools, which covers teachers

and running costs, and comes directly from the government.

The figures below show broadly how we will spend our budget on services in 2024/25.





# Our budget decisions

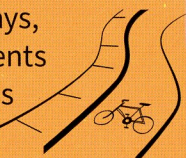
## Where we will invest

Our budget invests in the things you think we should focus on to deliver our nine strategic priorities. We listened carefully to what matters most to you and your communities through our residents' survey, engagement events and our budget consultation.

### Examples include:

**£1.9m**

to improve local highways, cycle paths and pavements in Oxfordshire, as well as £5m additional capital investment to improve local roads.



**£0.5m**

to develop and support plans to reduce congestion in Oxford and to improve public transport options in Oxfordshire.

**£4.8m**

investment in adult and children's social care including funding to strengthen early intervention and family safeguarding.



**£1.5m**

to invest in additional capacity in services for children and young people with special educational needs and disabilities and to increase early help and support.



## CAPITAL PROGRAMME

**Three per cent** of your council tax is used to support the cost of borrowing towards our **£1.5 billion** capital programme, which includes investing in highway improvements (**£269m**) and major infrastructure (**£701m**), new school buildings and pupil places (**£249m**) and other service needs reflecting the council's priorities.

Most of the funding comes from government grants and can only be used for capital schemes – it can't be used for day to day council spending.

## Additional costs and savings

All local authorities are continuing to face significant demand-led and inflationary pressures. These amount to approximately £27 million new pressure in 2024/25. Government grants and funding are simply not keeping pace with this growth in demand and costs. Government has, however, acknowledged the difficulties councils are facing and has provided one-off funding

for 2024/25, which for the county council equates to £4.8m.

We have still faced some difficult choices in setting a balanced budget and we have had to find £13.9m in savings. These include reducing the operating costs of our buildings and lowering our reliance on agency staff.

Our 2024/25 budget can be viewed at [oxfordshire.gov.uk/councilspending](https://oxfordshire.gov.uk/councilspending)

## Council tax

**For 2024/25, Oxfordshire County Council is increasing council tax by 4.99 per cent.** This is made up of a 2.99 per cent increase to your 'core' council tax and an additional two per cent increase to help pay for adult social care (known as a precept), which the government expects local authorities to use to meet social care responsibilities.

The county council's share of council tax for a Band D property (the average council tax band) in 2023/24 was £1,734.03 (£33.35 per week).

For 2024/25, this will increase to £1,820.56, which is equal to an additional **£86.53 per year or**

**£1.66 per week in council tax on a Band D property.** If you are experiencing a financial crisis and struggling to afford household essentials, you can apply to our Residents Support Scheme for assistance.

To access the scheme please visit: [oxfordshire.gov.uk/living](https://oxfordshire.gov.uk/living)

The overall council tax bill for your property also includes separate payments to your city or district council, the police and crime commissioner for Thames Valley and possibly a parish or town council.



## Waste and recycling

Household waste recycling centres  
**oxfordshire.gov.uk/waste**

Bin collections

- **westoxon.gov.uk/bins**
- **cherwell.gov.uk/bins**
- **southoxon.gov.uk/bins**
- **whitehorsedc.gov.uk/bins**
- **oxford.gov.uk/recycling**

Recycling advice

- **oxfordshirerecycle.org.uk**
- **oxfordshire.gov.uk/wastewizard**

## Report

Potholes, faulty street or traffic lights  
**fixmystreet.oxfordshire.gov.uk**

## Libraries

**oxfordshire.gov.uk/libraries**

## Schools

Admissions and term dates  
**oxfordshire.gov.uk/schools**

## Support services

Live Well Oxfordshire  
**oxfordshire.gov.uk/livewell**

## Better climate choices

**climateactionoxfordshire.org.uk**



Did you  
know?

We have a podcast.



Scan to  
listen

## YOUR COUNTY COUNCILLOR

Oxfordshire County Council has **63 county councillors** who you vote for every four years. Your county councillor can help if you have a query or concern about the council's services by offering advice or directing you to someone who can help.

**oxfordshire.gov.uk/  
councillors**

You can apply, book, find, report and pay for a range of services on the county council website:  
**oxfordshire.gov.uk**

## STAY IN TOUCH

✕ @oxfordshirecc  
f oxfordshirecountycouncil  
@oxfordshirecc  
@oxfordshirecc  
in @oxfordshirecountycouncil

## CONTACT US

**oxfordshire.gov.uk/  
contact-us**

**01865 792 422**

Oxfordshire County Council,  
County Hall, New Road,  
Oxford, OX1 1ND



Sign up to Your Oxfordshire **oxfordshire.gov.uk/newsletter**

