

Your council tax explained

County council services
&
how your money is spent

2022/23



**OXFORDSHIRE
COUNTY COUNCIL**

Dear resident,

This booklet provides an update on the services we, at Oxfordshire County Council, provide, how they are funded and our vision for leading positive change by working in partnership to make Oxfordshire a greener, fairer and healthier county.

We have developed nine priorities to deliver this aim and have looked for ways to support these priorities in our 2022/23 budget. Our commitment to being inclusive and putting you at the heart of our decision-making has been key in setting our budget. We want funding to go where it is most needed and invest in services that will have a positive long-term impact for our local communities.

We listened carefully to what you told us in our budget consultation and where you want us to focus our efforts. That means, we'll continue to protect those in need, while investing in services that prioritise the health and wellbeing of residents, that tackle inequalities and support carers and the social care system and lead the way in addressing the climate emergency.

We are, however, not alone in facing funding and delivery pressures, both as a result of uncertainty over government funding and the ongoing impact of COVID-19.

We know increasing council tax by 4.99 per cent overall will put additional strain on household finances at a very challenging time. However, without funding from government to meet rising costs, the increase is needed to meet additional demand and to support the necessary investments in adult and children's social care and climate action, which we have outlined on pages 6 - 7.

Given the level of remaining uncertainties, including around COVID-19, we will continue to take a cautious and measured approach towards managing our budgets to deliver for residents today and in the future.



A handwritten signature in black ink that reads "Liz Leffman".

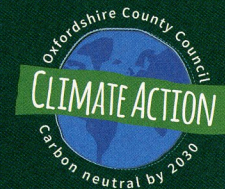
Councillor Liz Leffman
Leader, Oxfordshire County Council

ABOUT THE COUNCIL

Oxfordshire County Council provides 80 per cent of local government services by expenditure, including adult and children's social care, some education services, fire and rescue, libraries and museums, roads, trading standards, waste disposal and recycling.

OUR VISION

To lead positive change by working in partnership to make Oxfordshire a greener, fairer and healthier county.



To achieve our vision, we will:

- Put action to address the climate emergency at the heart of our work.
- Tackle inequalities in Oxfordshire.
- Prioritise the health and wellbeing of residents.
- Support carers and the social care system.
- Invest in an inclusive, integrated and sustainable transport network.
- Preserve and improve access to nature and green spaces.
- Create opportunities for children and young people to reach their full potential.
- Play our part in a vibrant and participatory local democracy.
- Work with local businesses and partners for environmental, economic and social benefit.

WORKING FOR YOU

Our services

We are proud to provide and support a huge range of services that enhance and improve the lives of people across our communities.

Here are just a few of the services we provided last year:

Looked after **850** children in care.



Supported on average **6,258** people daily with ongoing adult social care.



Managed **310,479** tonnes of household waste, of which 59.9 per cent was recycled, reused or composted.

(April 20 - March 21)



Attracted **2.9 million** physical and virtual visits to the library service.



Repaired **34,750** potholes.



Attended **5,493** fire and rescue service call outs.

(April 20 - March 21)

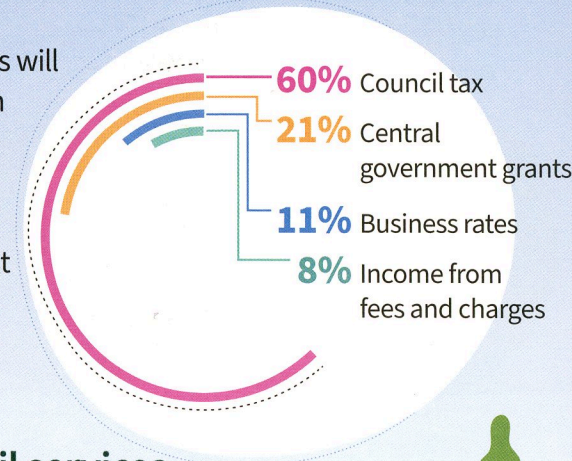


Figures from January - December 2021

MANAGING OUR BUDGET

Where the money comes from

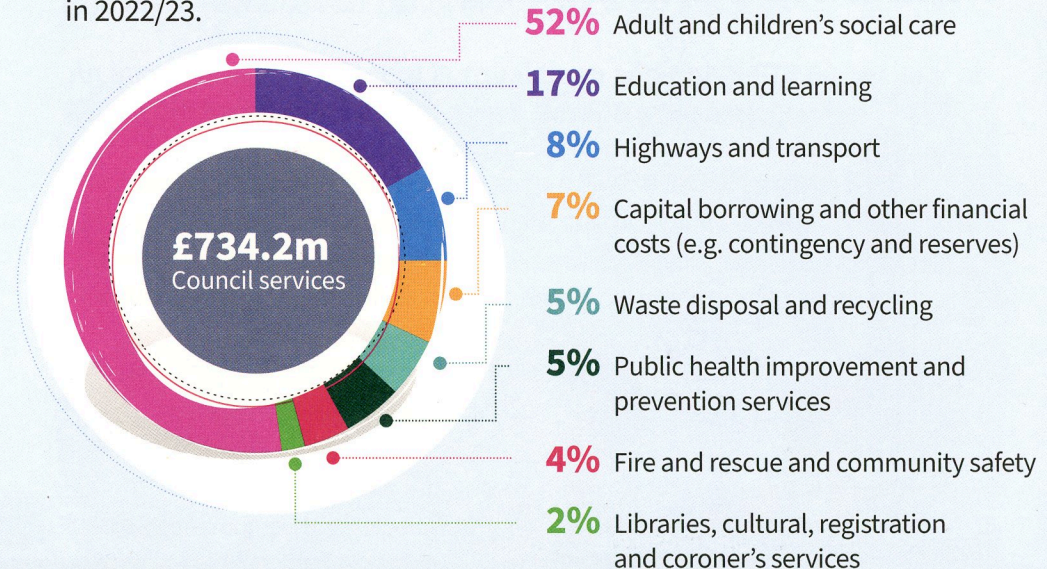
For 2022/23, 60 per cent of the county council's funding for services will come directly from council tax, with the rest coming from charging for services and government grants. This has increased steadily over the last ten years as central government has cut grants to local government. In 2010/11, 28 per cent came from council tax.



What we spend on council services

In 2022/23, the council plans to spend **£734.2** million on services – our gross expenditure budget. In addition, we will also spend **£198.7** million on maintained schools, which covers teachers and running costs, and comes directly from the government.

The figures below show broadly how we will spend our budget on services in 2022/23.



Where we will invest

Our 2022/23 budget proposes both investments in priority areas and savings. We're committed to investing the savings we make into services that will have a positive long-term impact for our local communities. This includes:

£174,000
extra to support 18 year olds leaving the care system.



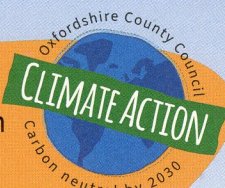
£4.4m extra

in adult social care to meet inflationary costs, which are predicted to rise across the care sector in the UK.



£1.33m

into climate action and resilience measures.



£1.15m to support more children being in care placements than previously expected, and for longer periods of time.



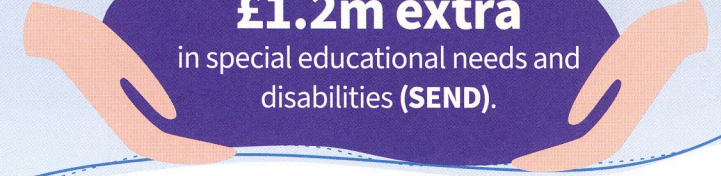
£800,000

to reduce the contribution rate that those in receipt of disability benefits have to pay towards assessed care needs.



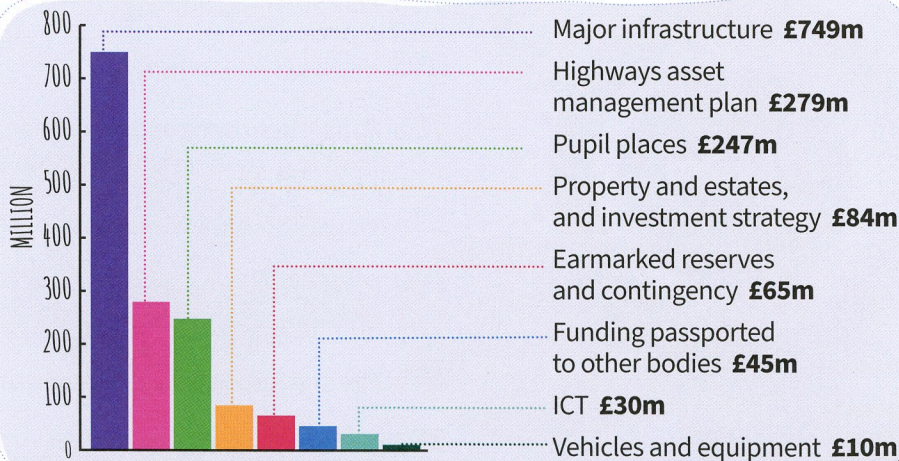
£1.2m extra

in special educational needs and disabilities (SEND).



Capital programme

Our £1.5 billion capital programme includes investing in highway improvements, energy efficient street lighting (over 10 years), new school buildings and other service needs reflecting the council's priorities. Most of the funding can only be used for the purpose it has been given and cannot be allocated to day to day council spending.



Council tax

For 2022/23, Oxfordshire County Council is proposing to increase council tax by 4.99 per cent. This is made up of a 1.99 per cent increase to your 'core' council tax and an additional 3 per cent increase to help pay for adult social care (known as a precept), which the government expects local authorities to use to meet social care responsibilities.

The county council's share of council tax for a Band D property (the average council tax band) in 2021/22 was £1,573.11.

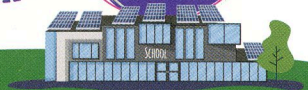
An increase of 4.99 per cent is equal to an additional £78.50 per year or **£1.51 per week in council tax on a Band D property.**

The overall council tax bill for your property also includes separate payments to your city or district council, the police and crime commissioner for Thames Valley and possibly a parish or town council.

£734.2M
council services

£932.9M
total spend

£198.7M
schools



YOUR COUNTY COUNCILLOR

Oxfordshire County Council has **63 county councillors** who you vote for every four years. Your county councillor can help if you have a query or concern about the council's services by offering advice or directing you to someone who can help. oxfordshire.gov.uk/councillors

WASTE AND RECYCLING

Household waste recycling centres

oxfordshire.gov.uk/waste

Bin collections:

- westoxon.gov.uk/bins
- cherwell.gov.uk/bins
- southoxon.gov.uk/bins
- whitehorsedc.gov.uk/bins
- oxford.gov.uk/recycling

Recycling advice

oxfordshirerecycles.org.uk
oxfordshire.gov.uk/wastewizard

REPORT

Potholes, faulty street or traffic lights

fixmystreet.oxfordshire.gov.uk

LIBRARIES

oxfordshire.gov.uk/libraries

SCHOOLS

Admissions and term dates

oxfordshire.gov.uk/schools

SUPPORT SERVICES

Live Well Oxfordshire

oxfordshire.gov.uk/livewell

STAY IN TOUCH



@oxfordshirecc



oxfordshirecountycouncil



@oxfordshirecc



@oxfordshirecc

CONTACT US

oxfordshire.gov.uk/contact-us

01865 792 422

Oxfordshire County Council,
County Hall,
New Road,
Oxford, OX1 1ND

You can apply, book, find, report and pay for a range of services on the county council website: www.oxfordshire.gov.uk

SIGN UP TO
YOUR OXFORDSHIRE
NEWSLETTER HERE



oxfordshire.gov.uk/newsletter