

# THE BAMPTON BEAM

December 2002

Volume 17, No3

## Bampton Skate Park - A Reality!

By Alan Dunbar

After very successful fund raising efforts, the go-ahead for the construction of the Skate Park was given in August. It is to be situated to the south of the car park at the Recreation Ground – just on the left as you enter from the Buckland Road.

Because it is to be an open air Skate Park, the ramps, jumps, and skating area will all be made of concrete. The Park is to be built by one of the leading companies in this field, Bendcrete Leisure of Abingdon. The skating area will be around 28m long and 9m wide. There will be information signs giving notice of the safety aspects and equipment that must be worn when using the Skate Park. Skaters from other parts of the local area will no doubt also want to use the new park in much the same way as Bampton skaters use other parks, but the Safety Rules must be respected by all users at all times.

Construction was scheduled to start on 11<sup>th</sup> November, but was delayed due to bad weather, and no activity had yet been detected on the site as the 'Beam' went to press. It is still, however, hoped that the park will be ready for use by the time the Christmas school holidays start.

*The Bampton Beam would like to congratulate Alan on a job very well done, and take the opportunity, on behalf of the Village, but particularly on behalf of the children of the Village, to thank everyone who contributed to the funding which has made the Skate Park a reality. It really has been a marvellous effort!*

*Parents, Christmas is just around the corner. What better present for your children, than to get them the proper gear to allow them to use and enjoy the Skate Park safely?*

## The New Bus Services

By Cllr Fred Gray

The new bus services, 18 and 19, commenced operations on 28<sup>th</sup> October with the new operator, Stagecoach. It is fair to say that the first few weeks were anything but smooth, with many problems being experienced by passengers. The main complaint was of poor timekeeping, particularly with the service 18's run down from Oxford. This service sometimes arrived so late that the passengers aiming to continue to Clanfield and Black Bourton on the 19, missed the connection at Bampton Market Square and were left stranded – although one or two of the bus drivers decided on their own account to continue the 18 service to Clanfield in order to get their passengers home, with the consequence of delaying the 18 service's run back to Oxford! While most of the timekeeping problems have been experienced with the late afternoon service 18 departures from Oxford, the service 19 has also had its fair share of late running, on a route which is not really troubled with traffic congestion problems. Other problems included drivers completely missing out the Market Square as a stop, driving at seemingly excessive speeds in order to keep to or

make up time, and – in relation to some drivers – not being sympathetic to the passengers plight, and even being a bit rude at times!

The unsatisfactory situation has been raised with Oxfordshire County Council – the contract holder – and Stagecoach, and at the time of writing, a review is being undertaken by them into the scheduling of the services, in order to try and overcome the problems – which they clearly recognise exist.

This has all been downside, but I have also received many positive comments from people using the services, and particularly those from Bampton, where the increased frequency is seen as being a great improvement, and where being the odd five or so minutes late, is not too important! So it has not all been doom and gloom!

Nevertheless, if you do have complaints over the service, please feel free to call me, and I will keep a log of the problems, and raise them with OCC and Stagecoach at the appropriate time.

The next issue on the table is whether Stagecoach would be willing to route some of its evening Witney – Carterton – Witney services through Bampton. OCC has advised that they are happy to host talks with Stagecoach on the issue, and these will hopefully be arranged in the not too distant future – but after today's problems have been dealt with. It is not clear as to whether OCC would be able to financially support such services, but the aim will also be to try and get Stagecoach to run them for a trial period in order to gauge demand and viability. Watch this space!





## Bampton Village Hall



An excellent venue for meetings, classes, parties, performances & fund-raising events. Main hall with stage, curtains, lights & piano.

Well equipped kitchen and servery with separate locked bar.

Badminton court marked and equipment available.

Modern toilet facilities.

**Lettings Officer: Mrs. Susan Walker**  
Lamplight Cottage, Bridge Street  
Tel: 01993 852361

## BAMPTON VILLAGE HALL

### Review of Letting Charges:

The last review was in April 1997. Since then many improvements have been made. In the past year a hearing-loop/sound system was installed and the main floor has recently been resurfaced. Heating is included with the hiring charge.

### From 1<sup>st</sup> January 2003 the new charges will be:

**General Hire** £5.00 per hour - meetings, classes etc.

**Morning sessions 9am – 1pm** £16.50 - meetings, sales, workshops, parties etc.

**Afternoon sessions 1pm – 6pm** £16.50 - meetings, sales, workshops, parties etc.

**Weddings/Dances/Parties 6pm – 1am (Midnight on Saturday)** £55.00  
(with bar £70.00)

**Preparation time** £1.00 per hour

**Commercial Hire** £10.00 per hour

**Badminton** (by arrangement) £3.00 per hour

**Hire of furniture:** by arrangement

**Musical events** £4.50 (use of piano by arrangement)

## BAMPTON '250' CLUB

A monthly lottery which raises money for The Bampton Village Hall and The Bampton Youth Centre.

### List of Winners

JULY	£25	095	Mrs Harding	New Road
	£15	138	Mr & Mrs G Taylor	Oathurst Estate
	£15	120	Mrs P James	Lavender Place
	£15	053	Mrs Miller	The Pieces
AUGUST	£25	144	Mrs D Cleaver	Broad Street
	£15	145	Mrs Emma Newland	Minster Lovell
	£15	034	Mr & Mrs Williams	Bushey Row
	£15	189	Mrs Howe	Chandler Close
SEPT.	£100	134	Mrs Chapman	Clanfield
	£25	161	Mr T Mace	High Street
	£15	231	Mr G Cook	Bowling Gr Cl.
	£15	073	Mr J Sarahs	Bowling Gr Cl.
OCTOBER	£15	052	Mrs Mansfield	New Road
	£25	229	Mrs J Lewin	Bowling Gr Cl.
	£15	132	Mr Drew	Ampney Orchard
	£15	113	Mrs V Christie	High Street
	£15	025	Mrs Poole	Chetwynd Mead

If you would be interested in putting your name on the waiting list please contact Mrs Susan Phillips Tel: 850321.

## CHRISTMAS SERVICES

### St Mary's

Tuesday 24<sup>th</sup> December

Wednesday 25<sup>th</sup> December

Wednesday 1<sup>st</sup> January

See Church Notice Board for Further Information

### Methodist Chapel

Sunday 15<sup>th</sup> December

Carols by Candlelight 6pm

Wednesday 25<sup>th</sup> December

Informal Service 10.30am

### St. Joseph's Roman Catholic Church, Carterton

Wednesday 25<sup>th</sup> December - Mass St. Mary's Church, Bampton 9am.

For other services, please see notice board in church porch or Tel: 01993 842463.

## BAMPTON CLASSICAL OPERA

### Festive Christmas Concert

Bampton Classical Opera always celebrates the feast-day of the town's obscure patron saint Beornwald on 21<sup>st</sup> December: this year they present a festive concert of music by Purcell and Handel, conducted by Gilly French.

These two great English (or adopted English!) composers both wrote grand and elaborate odes in honour of the patron saint of music, Cecilia. These powerful and magnificent paeans in praise of music will make a wonderful start to the Christmas season, in the magical candlelit setting of Bampton's beautiful church.

This makes a splendid finale to Bampton Classical Opera's Tenth Anniversary Season, which has also seen the company perform to an ecstatic and large audience at one of London's leading concert venues, St John's, Smith Square.

The company is delighted to acknowledge its gratitude to Bampton Parish Council and West Oxfordshire District Council, and to the local members of its Friends group, who continue to provide financial support enabling this nationally-acclaimed performing group to flourish.

**Saturday 21<sup>st</sup> December 7.30pm**

**St Mary's Church**

Tickets from Abbey Properties, or at the door.

## BAMPTON PARISH COUNCIL NEWS

By David Hawkins,  
Chairman, Bampton Parish Council

### Future Policy

The Council were disappointed to note the criticism from an ex Councillor, Roger Howard (letters August) that the Council are not apparently planning for the future. Nothing could be further from the truth. A glance at the Parish Council Minutes displayed on the new notice board would show that much effort is going on to complete Phase 2 of the Market Square improvement project, to support low cost housing projects, to examine affordable and effective traffic calming measures, to support conversion of unused farm buildings into business units that will provide more jobs in Bampton, to improve on the already excellent sports facilities at the Recreation Ground (the new Skatepark is an example), to improve the available space for our cemetery, to improve our allotments, to improve street lighting as and when we can afford new lamp posts, and last, but not least, to fully support our precious businesses and prevent further closure. All Bampton residents are welcome to attend our meetings (2<sup>nd</sup> Wednesday of each month at 7.30pm) to hear about our many plans to improve your Village.

### New Work Places

The Council considered the planning application for a change of use of the outbuildings of Backhouse Farm in Primrose Lane, Weald. The proposal involves the conversion of barns, stables and other farm outbuildings to a dwelling and four class B1 industrial units. The B1 category allows office use, research and development processes and hopefully will produce work for local residents. Whilst the Council had few problems with the design of the new buildings, there was much debate about increased traffic using the unadopted Primrose Lane and also that the B1 category doesn't include financial and professional use. We understand that WODC have granted permission for this application to go proceed, but with restrictions on hours of use etc

**Skatepark – Go Ahead** – After a long summer of fund raising, the Parish Council has now given the go ahead for the new Skatepark to be built at the Recreation Ground. Village children have been consulted at every stage of the planning and their suggestions have been incorporated into the proposed layout. Work should start in November with a target completion date of the Christmas school holiday. The hard working Skatepark Committee, under Alan Dunbar's leadership, deserve much credit.

### Protective Clothing for Skatepark

Parents should note that protective clothing must be worn by all children using the new skatepark. Since there will not be any supervision of this facility, it will be up to parents to ensure that children are properly equipped and given any training before using what can be a dangerous play area. Details of protective clothing will be displayed on the Council's notice board. What better Christmas present can you buy your child?

### Housing Policy

The Council's Housing Policy was debated at length at the August meeting. It was agreed that for the mo-

ment, no major development proposals could be supported. The urgent need for low cost housing, however, was recognised and when the West Oxfordshire Local Plan for housing takes shape, the Parish Council hopes to consider small sites for possible construction of affordable housing.

### Sale of the

### Elephant & Castle Pub

The Council were most disappointed to hear that no brewery had come forward to buy the Elephant & Castle and that the buyer would be converting what was a very smart and efficiently run pub into a dwelling. The Council were told of the frustration felt by the many regulars of the pub that such a valuable asset to the village slipped away from their grasp. It is understood that a number of residents wrote to the new owner asking him to consider running the pub for a couple of years to realise its considerable potential.

### Kebab Van

The Council have received several letters recently complaining about the kebab van that operates 7 days a week in the Market Square area. Whilst the Council permitted the owner to operate in the Market Square on two evenings each week (Tuesday and Saturday) it had been hoped that he would visit other villages on the other evenings. The Council is looking again at the regulations to see whether his operating hours can be more strictly controlled and his operating days

## Bampton Welfare Trust

Charity No. 202735

The Trustees may make gifts to the needy in Bampton, Aston, and Lew – as far as their funds allow – to relieve sudden distress or sickness, help with travelling expenses to hospitals, provide fuel and food for the sick. The Trustees also assist the local primary schools, playgroups and clubs for the elderly in that area.

**Trustees:** Vicar of Bampton with Clanfield, The Reverend D Lloyd, Mrs R Colville, Mrs J Haslam, Mrs J Newman, Dr M Perry, Mrs S Phillips, Mr C Rouse, Mr G Wiltshire and Mr G Mills (Aston), Mrs A Grinsell (Lew).

**Clerk to the Trustees:** Mr D Pullman,

Mill Green Cottage, Bampton, Tel: 01993 850589.

**Welfare Officer:** Mrs J Newman,

Leofric House, 81 New Road, Bampton, Tel: 01993 850755



much reduced.

### Jubilee Seat

The new seat, donated by WODC, has been placed in the garden of the Library. The Council is most grateful for this generous gesture.

### Multisport Facility

The floodlit multisport facility which is suitable for tennis, basketball or 5-a-Side soccer is available throughout the winter for hire. Charges start as low as £7.50 per hour and the facility can be booked with **Ray Willis Tel: 01993 852483**. The Pavilion is being used more and more for Wedding Receptions, birthday and christening parties. Ring the above number to book this excellent facility.

### More Frequent

#### Bus Service to Oxford

The Council were pleased to hear that with effect from 27 October, Stagecoach have been running a more frequent No.18 bus service to Oxford. We expect the service to pick up from the Market Square and Bushey Row. The No 18 Service will link up in Bampton with the No. 19 Carterton – Bampton – Witney service to give our residents frequent access to local towns and villages such as Clanfield, Black Bourton and Aston.

### PLEASE USE THESE SERVICES.

### New Hockey Club

It is hoped to start a Bampton Hockey Club in the near future. Friendly fixtures will be arranged over the winter. Please call **01993 850293** if you wish to play or help in anyway.

### Stair Lift to WOA's Gallery

After looking at the various options to provide a lift in the Town Hall to the upstairs gallery, we have now decided to install a stair lift. WOA are examining ways to fund this venture.

### Minute Secretary

The Council is looking for someone to take the Minutes at the monthly Council meetings and at any other official meetings held during the year. The salary will be paid on an hourly basis, and the hours are not expected to exceed 10 per month. Anyone who is interested in the position or would like more information please contact the Clerk, **Mrs Brenda Sapsford Tel: 850776**.

## THE SPAJERS NEWS

By Don Rouse

### Well done Bampton!

In my last SPAJER News Bulletin I spoke of the dilemma facing us seven V.I.Vs (very important volunteers) for our Donkey Derby. After the Bulletin was published we had tremendous offers of help, resulting in the Donkey Derby making its highest ever profit of £3,200.

Thank you one and all for supporting us in your many differing ways. Needless to say every penny raised will find its way into the pockets of our Senior Citizens.

We have had some changes in our Committee. After eighteen years as our Treasurer, Dixie Deane has decided to step down and hand over to a younger man - Al Newing! Roger Snow is our new Secretary. We are very grateful to Dixie for all those years of devoted service, and we are indeed fortunate that he is still available for Committee work.

Speaking of changes, our Vice-Chairman, who served ten years as Chairman, then fifteen years as Vice-Chairman, feels the same way as I do, that it is the time for more changes and that it is therefore time for him and I to step down. Without giving too many secrets away, he was forty when he became Chairman and I was fifty when I took over. You can see that what we are looking for are youngsters between the ages of forty to fifty with the enthusiasm and verve of youth, as well as an element of wisdom to take over from us both. This should then take us through to the 2020s.

I feel there is a big future in the role of the SPAJERS in Bampton, people are living longer therefore our numbers will be rising and our need for more revenue will always increase. SPAJERS is not just about raising funds it is also about creating and maintaining a caring Community.

If you would like to give it a try or to discuss any aspects please contact me **Tel: 01993 851480**.

Our next fund raising event is the Quiz Night which will be held in the W.I.Hall on Friday 11<sup>th</sup> April 2003 - more details at a later date. Our reigning champions are the St. Mary's Church Bellringers ably assisted by the Revd. David Lloyd and his family.

To become a Member of the SPAJERS all you need to do is to have achieved the national pensionable age, lived in Bampton for a minimum of six months and given your name to **Al Newing, Tel: 01993 850809**, Al is the keeper of the membership list.

## A Merry Christmas to you all

### Interested in a Broadband Telephone Connection?

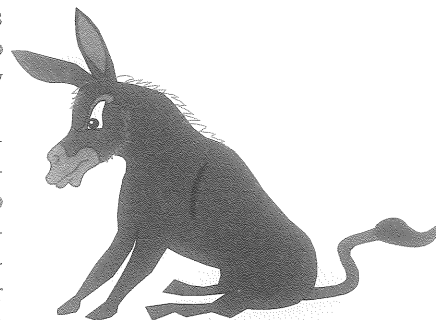
Bampton is not yet on the list of places where BT will offer broadband services. However, it is understood that if 50 or more people in an area register interest, there is a good chance it will be offered.

To register your interest, just access the BT Website:

[http://www.britishtelecom.co.uk/broadband\\_information/index.html](http://www.britishtelecom.co.uk/broadband_information/index.html)

## Thank You

*The 'Beam Team' would like to thank our stalwart 'Beam Walkers' for the wonderful job they do every year. Without them it would be impossible for everyone to receive their copy of The Bampton Beam delivered straight to their homes.*



## Affordable Housing Crisis

by Jonathan Phillips – District Councillor

The countryside Agency in their report **Countryside 2002** shows that housing in West Oxfordshire and South Oxfordshire is among the least affordable in England with the Vale of White Horse not far behind. Launching the report **Euan Cameron, the Chairman of the Countryside Agency** warned "the countryside could become the preserve of the wealthy threatening the whole nature of rural communities and the viability of services.

Other consequences were pointed out by **Mike Gwillam, the Director of Planning and Transport for the South East Regional Assembly**. "A lack of sufficient affordable housing contributes to social exclusion. It impacts on labour supply and economic prosperity and it generates longer distance commuting contributing to transport problems."

Three recent surveys in Oxfordshire - the **WODC Quality of Life Survey**, the **Oxfordshire OCP Forum**, and the **Quality of Life Performance Indicators** from a mix of District Councils - all listed the shortage of affordable housing as one of their top concerns.

Other press comment this year includes: "Government forecasts indicate 220,000 new homes need to be built each year.

Currently completions are only 150 – 170,000. Is it surprising house prices go on rising? And they will continue to do so. Last year fewer houses were built than in any year since the end of World War II. "It is time for the Housing Sector to tackle the 'not in my back yard' lobby head on", was another comment as was "forget hospitals. Housing should be the main concern." and "some of the greatest housing pressure is in the Thames Valley – there are precious few brownfield sites in such places. Communities can be destroyed by excessively high house prices as well as by exceptionally low ones."

I think most people now agree the Country has an affordable housing

shortage and West Oxfordshire has a bigger problem than most places. How bad is it in West Oxfordshire?

**The West Oxfordshire Housing Survey 2002** has now been published and makes alarming reading for all in the villages in the District. The waiting list is now over 2100 up from 1700 a year ago. For example in January this year 220 people with housing points wanted housing in Bampton; by August this had risen to 313. Council houses should never have been sold off without replacing them and the price is now being paid.

There will always be a proportion of any community with a need to rent at an affordable price and these houses are needed where there is family support.

Bampton now has approximately 100 fewer rented houses than in 1970, these at least must be replaced. Bampton is one of the 'hot spots' in the District with a need for affordable housing and also employment sites to help keep the remaining facilities which will be used during the day.

The community with its wide mix of people is in danger of being destroyed and so are the Class C Towns/Villages which are not down for further development in the local plan being discussed now.

We are not alone; the shortage of affordable housing will affect many villages in West Oxfordshire. The housing survey which had a record 40% response rate showed that 57% of people earn below £15,000 and only 21% over £20,000 but the average flat costs £104,000, terraced house £140,000 and semi-detached house £150,795.

The population in the District is set to grow by 13% from 1996 to 2016 but 7.4% of the 25 – 44 year olds will leave the District mainly because of the lack of affordable housing. The percentage of people over 65 will grow considerably. We can ill afford to lose any of our 25 – 44 year olds.

Think of the effect of this in the village on sport, clubs, school etc. There

will also be fewer carers for the growing elderly population. To meet demand there should be 813 affordable dwellings built each year in the District.

Last year, despite WODC investing £5 million, 100 were actually built but 58 were sold off – a net gain of 42! Government help is needed if communities in West Oxfordshire are not to be destroyed by this lack of social housing.

It is not possible to provide housing for the 500 new households forming each year in West Oxfordshire unless they can afford to buy or rent in the private sector so the waiting list will go on growing.

As your representative, this is what I have been pointing out to the Parish Council and West Oxfordshire District Council for some years.

There are jobs available and people want to live in Bampton but many local people cannot afford the prices. Unfortunately the planning system makes it difficult to provide new affordable housing without also adding more private housing which we would rather not have. If a developer can be found who is prepared to allow 50% rather than the normal 30% low-cost homes on a development then, in order to preserve the mix of people in our community we should accept this.

The crisis in affordable housing in Bampton is so great that I am now in favour of this option. Exemption sites for affordable housing depend on land being given at a very cheap price and we are not being inundated with offers! The owners would rather wait to get full planning permission.

Any reasonable size site would form a ghetto which is not desirable. Social housing should be mixed with private housing for this to be avoided.

I do not want to see our community destroyed. We must act to keep our mix of people before it is too late. I would welcome your views so please put pen to paper and let me have them. Mr Jonathan Phillips, 'Haytor', Lavender Square, Bampton, Oxon.

## N. J. WOODLEY BUILDING MAINTENANCE

COMPETITIVE RATES

15 CALAIS DENE, BAMPTON, OXON.

Tel: 01993 850753

Mobile: 07799 655385

## A. SIMMONDS *The Old Fashioned Village Store*

Market Square, Bampton  
Tel: 01993 850204

Traditionally Baked  
Bread and Cakes

---  
Groceries  
Confectionery

---  
Discounted Toiletries  
and  
Household Cleaners

---  
Logs      Coal  
---  
Large Range of  
Pet Foods & Requisites  
---  
Free Local Delivery

## TEMPLES

MARKET SQUARE, BAMPTON

TEL: 01993 850877



COME AND SEE OUR CHRISTMAS STOCK  
CARDS, PAPER, GIFTS, DECORATIONS  
& MORE



DIY, Ironmongery, Paint, Wood, Cement, Sand, Gravel,  
Toys, Gifts, Candles.

Gardening Equipment including Mr. Fothergills  
Seeds and a wide range of Compost.

A Range of Car Accessories  
Wind Screen Wipers, Plugs, Batteries etc.

DRAPER STOCKIST & AGENTS FOR SWAN  
DRY CLEANING

COME IN AND LOOK AROUND : WE ALSO DELIVER LOCALLY

Wishing You a Merry Christmas & Best Wishes for the  
New Year


Don't go anywhere else until you've been to Temples!



ANDREW BOWMAN  
MASTER THATCHER  
HEDGEFELDS FARM  
BAMPTON  
Tel: 01993 850116  
Member Oxon, Berks, Bucks  
Master Thatchers Association

HAIRDRESSERS  
DRESSMAKERS  
Have Your Scissors  
SHARPENED

P  
O  
L  
I  
S  
H  
E  
D



B  
A  
L  
A  
N  
C  
E  
D

Tony Hughes  
10 St Mary's Court  
Weald, Bampton  
Oxon. OX18 2HX  
Tel: 01993 851458



# LOGS

Well-seasoned  
Cut to any size

Deliveries 7 days a week

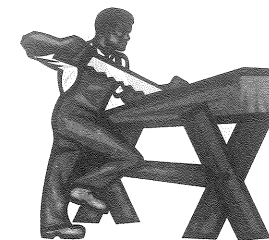
Please Ring George

on

01367 253097

or

07970 692292



## SOCIETY FOR THE PROTECTION OF BAMPTON

The Society aims to stop excessive  
developments in the village, such as  
large housing estates, and encourage  
suitable developments. So far we  
have been very successful.

To achieve these aims we need the  
largest possible membership. If  
you aren't a member

DO JOIN NOW

Send your membership fee of £2  
each (£1 for OAPs) for the period  
up to December 2005, to  
Society for the Protection of  
Bampton  
Manor House  
Bampton, Oxon OX18 2LQ

## Go for greens

If you're eating out, try somewhere  
different - come to **g**reens

Choose from just a starter up to three  
courses. Using the finest, local  
ingredients, our New World and  
European menu will have something  
to tempt you.

A basket of bread, unlimited iced  
water and coffee with hand-made  
chocolates are all included in the price!

Open 12noon - 2.30pm

7.00pm - 9.30pm

(Last Orders)

Closed Sat Lunchtime & Sunday Evening

FOR RESERVATIONS CALL:

Tel: 01993 893000

WITNEY LAKES  
RESORT



Enjoy  
at Witney Lakes Resort

Downs Road Witney,  
Oxfordshire. OX29 0SY



## News From Bampton Primary School

By Jenny McCardle : Parent

Perhaps you thought nothing much had been happening at the school as I have missed the last couple of issues; you would be very wrong! The school is so lively and vibrant with a wealth of activities going on that you wonder how the staff and pupils achieved

corts from the local Fire Service and the Police.

At the church a "Coronation Service" was conducted by the Rev. ("Bishop") David Lloyd and our Queen was crowned, to much joy and merriment

from her loyal subjects. The procession then returned to school where lunch was a street party in the playground with sandwiches being eaten from paper bags circa 1952. The day's events concluded with a special assembly where each child was presented with a Jubilee medal from the Friends of Bampton School (FOBS).

While the Coronation day was the most newsworthy event so

school this year.

The Children entertained us beautifully at the end of the summer with KS1 performing The Little Red Hen and KS2 Cruising With Noah, over £560 was raised at these performances for donation to the children's choice of charity; The Tear Fund.

Events within school have seen an African Arts and Dance workshop, a bookfair, Harvest Festival, and an arts workshop, when a massive fish was made by all the children which was then exhibited at the Cotswold Wildlife Park.

KS1 children enjoyed their annual Teddy Bears Picnic and Tent Day, and P.C Patrick guided year 6 children through their cycling proficiency tests.

Groups of children have made visits to enhance their classroom work. Trips have been to Foxcombe Woods, Sulgrave Manor, Christchurch, Cathedral, Hill End Activity Centre, the Bush Club, the Doctors Surgery, and a week long visit to Yenworthy on Exmoor.

The range of Clubs available to the children has increased again and we currently have: Violin, Recorder, Choir, Keyboard, French, Netball, Football, Dance, Gardening, Fabric Design and Sewing and Brownies.



Coronation Day Procession

such good SATS results.

The grounds are looking much smarter now the playgrounds have been resurfaced. The seating and planters which were planted with red white and blue donated flowers for the Jubilee enhance the effect. You may have seen the local TV coverage of our very own Coronation Day but if you didn't, here's a brief run down of the days events.

The idea started on quite a small scale as an activity to support the KS1 R.E. curriculum, and snowballed into an event which lasted a whole day and involved the whole school and lots of parents and volunteers! A queen (Danielle Godwin) and her Hand Maidens were selected by drawing names from a hat and a wonderful coach was loaned by Martin Landry (seen in the Shirt Race in its less Royal livery). On the day every one wore "best bib and tucker" and many Princes and Princesses came from other realms. The whole school was then involved in the Coronation procession to St Mary's Church with es-

many other things have been going on.

Last year ended with a very successful carol singing evening organised by FOBS. Various establishments both licensed and other, were visited on a truly crisp evening. Spirits were raised at the start of the evening with some warming mulled wine and mince pies and the hospitality of The Romany and the monies collected were donated to Shelter.

Other FOBS events have included Disco's, Quiz Night, Shopping Night, Sponsored Times Tables and the summer Barbeque. A big thank-you to every one who has supported us in any way at all over the past year; you have helped us raise over £4000. £6000 has been contributed to the



The Queen and Her Entourage

Thank you to all the volunteers who offer our children such a diverse range of activities.

Forthcoming FOBS events are: Xmas Bazaar 13.12.02 School Carol Singing 20.12.02. Barn Dance 31.1.03 School Fashion Show 6.6.03 School.

## Bampton Playgroup needs a new building!

Bampton's well-established and successful Pre-School Playgroup needs a new building and we would like to enlist your help in raising funds for this. As you may know, the Playgroup is a charitable organisation that has been looking after children from the village and surrounding area for 27 years. Over the summer a building surveyor highlighted some defects at the Playgroup building. We would like to thank Chris Boot very much for carrying out emergency repairs at short notice. Whilst it is perfectly safe for Playgroup to operate from the present building we have been advised that it will need to be replaced in two years.

It is important that we stay on our current site next to the school. We are in the process of collecting quotes for a replacement building. This is obviously going to be very expensive, and whilst we will be applying for every grant we can think of Playgroup will be doing a lot of fund-raising. We would very much appreciate any support you can give us. Many of you may have used the Playgroup in the past and many of you will use it in the future.

If you can offer any help please call Sarah Radband Tel: 852828 or Jo Ader Tel: 850328.

### Bampton Pre-School Playgroup

#### Notification of Change of Committee September 2002

<b>Chair</b>	Caroline Taylor
<b>Vice Chair</b>	Lee Savage
<b>Treasurer</b>	Tiffany Lodge
<b>Secretary</b>	JoAder
<b>Enrolment &amp; Fees Secretary</b>	Liz Luxton
<b>Rota Secretary</b>	Anita Chatwell
<b>Other Members</b>	Paula Auger, Jane Harris
<b>Staff</b>	
<b>Supervisor</b>	Sarah Radband
<b>Assistant Supervisor</b>	Janice Savage
<b>Assistant Supervisor</b>	Jenny Stacey
<b>Assistant Supervisor</b>	Rita Lewis
<b>Assistant</b>	Monica Owen
<b>Play Helper</b>	Di Scarrott
<b>Play Helper</b>	Debbie Wiles

### A New Scout Group for Bampton

The 'West Oxon Scout Association' is looking to set up a new Scout Group in Bampton.

The next few years could prove an exciting time for Scouting as a new program has just been introduced for boys and girls from the age of 6 to 18 years.

If anyone out there has been trying to watch the TV while the kids from down the road are playing football outside then now is your chance to give them something useful to do instead. If anyone is interested in helping at any age group, either as a uniformed leader or as a parent-helper or as a committee member then please contact

Andrew Pierce Tel: 01993 700869 or e-mail [Andypierceadc@aol.com](mailto:Andypierceadc@aol.com).

## When the Clocks Go Back

A report from the Home Office explained how there appears to be a significant link between the clocks changing, winter nights and increases of burglaries. Official crime statistics show that the increase in domestic burglaries for two quarters of the year-during the coldest darkest months. One of the main reasons being that it is more obvious to the burglar when the residents are not at home. Security lighting is the obvious answer but you are advised to choose lighting with care. For internal use a timer is ideal. Have a light come on in a bedroom or living room to give the illusion of occupancy. Use high efficiency lighting to cut down on costs.

External lights are a good idea to deter the burglar who does not want to be seen. However may security lights purchased are less than ideal. Some tungsten halogen floodlights are harsh and intrusive to neighbours. They operate with passive infra-red (PIR) sensors, which illuminate the light when approached and then switches off. They are easy to avoid and are often ignored by neighbours because they are activating too often to be effective. An alternative is to use high efficiency low energy lighting controlled by a photo-electric cell (dusk to dawn switch). These provide lighting permanently during the hours of darkness, illuminates an area adequately, is more environmentally friendly and the low wattage bulb costs less to run.

**Remember** - Security lighting alone will not deter a criminal if there are other security weaknesses evident. Check your boundaries, keep fences in good repair, close gates / doors. Put dustbins away after refuse collection, cancel newspapers and milk if going away and do not leave bikes and garden machinery lying around outside. If you are going away it's a good idea for neighbours to park on your drive in your absence, creating the impression someone is at home.

If you would like to know more about Neighbourhood Watch, please contact: Janet Mott at Witney Police Station, Tel: 01993 893811.



## Remembrances of My Service in the US Army

### Part 3: Bampton to Normandy

By Dick Ford, US Army 1941-1945

In our last two editions, Dick Ford took us from his time with the US Army in Panama in 1941, to when he arrived in Bampton in 1942. Here, the last part of his memoirs takes us on the journey which eventually led him to Normandy, to participate in the greatest amphibious landings of all time.

There was more entertainment at Tidworth Barracks, than at Bampton. The nearest town was Andover, 8 miles away, and Salisbury - 16 miles. The boys would walk to these towns for their social entertainment. There also was the NAFFI. This was the British equivalent of our PX. The boys could buy things instead of spending all their money in the Pubs. I think the British were watering down the booze as you could consume a pretty good quantity without getting bombed. You could buy 'fish & chips' at the NAFFI. They were served wrapped in a piece of newspaper and sprinkled with vinegar. Really were good.

The Officers would have parties and dances in our quarters. They would bring in English girls and women from the area for dancing. There would be good food and drink, which these women weren't used to seeing. They would really 'load up', and I really felt sorry for them as they had nothing. The meat markets and butcher shops only displayed SPAM. The dances were murder. Everything was blacked out naturally, and all doors closed. When you had a crowd in the dance hall, with no ventilation, the BO was STRONG. The British were apparently only bathing once a week because of a water shortage. When staying at the Red Lion Inn in Salisbury - the Red Lion was a very old hotel, probably built in the 17<sup>th</sup> or 18<sup>th</sup> century - there was a black line painted in the tub for the water level, and you were allowed only about 3 inches of water in the tub. A maid would check on the use of water to make sure I didn't exceed the 3-inch limit - and the water was only 'tepid'. The other thing I remember about the Red Lion, was the height of the beds off the floor. You had to use a two-

step stool to get into bed, and I remember thinking that if I ever fell out I'd break an arm or a leg - or perhaps my neck!

After the winter at Tidworth, our Battalion - 3<sup>rd</sup>, 115<sup>th</sup> Infantry Regimental Combat Team - moved to Bodmin in Cornwall. This was a distance of about 145 miles. We walked on this move and it took the better part of a week. It rained 90% of the time and we got used to sleeping under a shelter-half at night in the pouring rain. It was very unpleasant. Bodmin is a small town on the edge of Bodmin Moor. It was the site of the Duke of Cornwall's Light Infantry camp. We occupied this camp and the accommodations were relatively good - considering where we were. At least we had indoor plumbing!

Our arrival frightened the inhabitants. Our helmets resembled the German helmet and the people looked askance at us. To better understand. The British had a saying, 'into Bodmin and out of the World'. So you can understand the situation. What made our arrival worse was the men hit the few pubs in town the first night they were off. The liquor was not cut with water and as a result they got horrendously drunk. There was yelling, fighting etc. We had to send trucks down into town, round the boys up and bring them back to camp. The result was a week's restriction to camp, while the 'Brass' calmed and soothed the local Officials. The men had drunk up the local supply of liquor to boot, and there was not any left for the locals. It took about a week to re-supply the pubs.

The first night back in town there was not a person in sight. The pubs were empty of the locals. 'Cutting' the liquor was initiated to conserve the supply and cut the drunkenness. Gradually things calmed down, and we grew to like the town and the people and vice versa. My favorite Pub was 'The Hole in the Wall'. You actually had to crawl through a hole in the stone wall to get to the pub! From town to the barracks was a pretty long walk up a long and fairly steep incline. In town

at the bottom of the hill was a huge flat rock. Another Company Officer, Lt. Mugavin, and myself, when we were quite loaded, would lie on this rock and raise a racket. This would bring the MPs and they would drive us up to the barracks. It was a long climb uphill to the barracks!

We did a lot of training on Bodmin Moor. The moor is a trackless bog-like prairie. Some places you walked on tussocks of grass that would give under your weight. The land was devoid of trees and we used large rocks etc., as landmarks. There were some hills that were named and I recall one named 'Brown Willy' and another named 'High Tor'. These high places would have the remnants of a circular stone wall around them at different levels, put there by some ancient peoples. The locals said they had been Roman fortifications at one time. Dozmary Pol was also on this moor. The place where legend has it that the sword Excalibur was thrust up out of the water for Arthur.

In the sunshine, the moor was a beautiful sight covered with purple heather, but on cloudy misty days - there were more of them - it was a miserable forbidding place. You could easily get lost in the fog, so we never traveled without a compass and developed routes of travel. I loved Cornwall. We would rent bicycles and ride to the resort towns. There was a series on PBS called 'Poldark'. I never missed it. The play took place in Cornwall and every time the theme music came on, I could close my eyes and transport myself back to Cornwall, standing on the hills looking out to sea.

Here we began our first and rudimentary training for the invasion of Europe. We had 'mock-ups' of a landing craft built on the ground. We learned how the craft would be loaded, where each individual would go, how we would come charging out of the craft. After a lot of this 'dry land stuff', we went down to the coast for water exercises. Our first landing craft were old English river barges. They had a narrow deck on them on which we would lay. We'd go out into the channel and come into a beach and as we hit the beach we'd roll off the side of the barge into the water.

This went on for awhile and we got used to being on the water.

Later on we got more sophisticated. We began using Higgins crafts. There was one phase of this training which was interesting, not to say scary! We'd be in landing craft going into the shore and a destroyer would fire its 5-inch guns over us. This was to get us accustomed to the high screeching sound of these naval guns. Some of the guys went berserk with the noise, but I suppose it got us a bit used to what was in front of us. After this we went back to the moors and trained by walking under artillery fire that was going over us and landing 50 to 75 yards to our front. This again was to get us used to the sound and seeing the ground explode in front of you and keep advancing into or behind the falling shells.

Many good friendships were made at Bodmin, and when we left, the people were sad, because they knew *why* we were leaving.

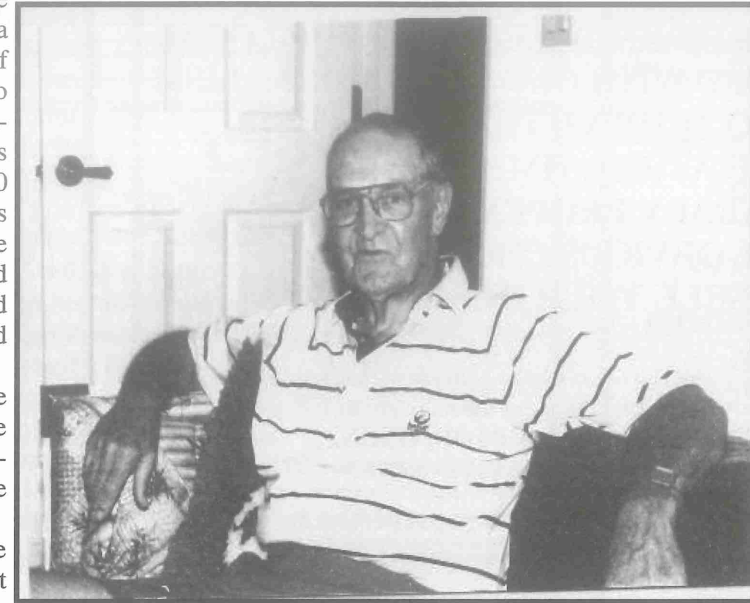
When we left Bodmin we moved to a place called Fort Tregantle, near Plymouth. This was an old fort built by the British during the Napoleonic Wars to guard the entrance to Plymouth Harbor. This was a stone building.

There was a bridge at the entrance that crossed over a moat, which was now empty of water. The living quarters etc., were below grade level. You could go up stone steps to the parapet. On the parapet you were about 10 feet above ground level. You could still distinguish where the cannons had been placed on the parapet. Where there were windows at ground level, the stone walls were 4-5 feet thick. A couple of the men would sleep in the window openings.

We did get into Plymouth on passes. This town had been pretty well bombed. There were blocks and blocks of nothing. At night, it was very dark in England, a British sailor would ask for a light. If you said ok, he would whap you one. They knew us by our dialect. To combat this, whenever we were asked for a light, we'd just belt them one without an-

swering!

Plymouth is where we were confined to quarters for three weeks preceding the Invasion of France. The French never call it the invasion. They call it the 'landings' and say they were 'invaded' by the Boche. The only time the Officers got out of the Fort, we were escorted under guard by MPs. We could not talk to people we might meet on the road. We went to



Dick Ford today at home in Sebring, Florida. Dick and his wife Vera, both in their early 80s, keep fit, as attested by the fact that they play 18 holes of golf three times per week!

some small buildings where there were dioramas of the areas we would be landing at. The European coast from Portugal to Holland was photographed every day. We would study these films and watch the men building the underwater obstacles etc. Those workers would run when the reconnaissance planes flew by. This we did every day until the day before we left to go to Plymouth to load up on the ships for Operation Overlord. We loaded up in broad daylight, at The Hoe in Plymouth. As we embarked on the craft, of whatever kind, we recorded our name, rank, and serial number, by calling them out to an Officer, tabulating them. The townspeople were watching all of this and we were wondering if we would see the place again.

Several months before we got to this point, all the 'undependables' had

been weeded out. At one time we had received several replacements. They were men who had been in stockades around the US and were told their sentences would be commuted if they joined an outfit that was marked for this operation.

An example of an 'undependable' was a fellow who had been a bank teller. He just wasn't fit for this kind of life and in my opinion should never had

been taken into the service. One evening at Retreat, at the command of 'order arms' when the rifle was held diagonally in your front, and the trigger is pulled to close the bolt, his rifle fired. The kid next to him dropped to the ground and I thought, "My God he's killed the boy." This took place when the whole battalion was assembled. The poor guy was distraught, the kid that hit the ground had fainted when the rifle discharged almost in his face. The Company Commander ragged me about my guys killing each other before they got into combat. Of course, the

other Officers in the Battalion kidded me about my Platoon being so disgruntled that they were shooting each other. But it was a platoon of good men. They had to be for what was coming next: D-Day.

*Dick Ford landed on Omaha Beach - 'Bloody Omaha' as it became to be known - and fought through the first months of the Normandy campaign, seeing some of the toughest fighting of this phase of the War. Wounded twice, he was repatriated to the USA in the December of 1945, and received his letter of discharge in January 1946. Dick now lives in Sebring, Florida, with his wife Vera, but remembers his days in the army vividly. He has very fond memories of Bampton, and, notwithstanding that he is now 82 years of age, is still planning to visit Bampton, and the surrounding areas, to see his old 'haunts'.*



## ABBEY PROPERTIES ESTATE AGENTS

*Specialising in the sale of property in  
Bampton and surrounding villages*

OUR UNRIVALLED KNOWLEDGE OF THE LOCAL  
AREA COMBINED WITH OUR PROFESSIONALISM  
AND WILL TO ACHIEVE THE BEST POSSIBLE  
PRICE AT ALL TIMES MAKES  
**ABBEY PROPERTIES**  
THE OBVIOUS CHOICE TO  
**SELL YOUR HOME**

*For marketing advice and a free valuation entirely without obligation,  
contact YOUR local agent.*

**MARKET SQUARE, BAMPTON, OXON.**  
Tel: 01993 851881 or Fax: 01993 850953

See also our Website [www.abbey-properties.tv](http://www.abbey-properties.tv)

## The Romany Inn

Bridge Street, Bampton  
01993 850237

Your Host: Trevor Johnson

### A Fine Old Hostelry Bar

Relax over a drink in our convivial surroundings in our L-shaped bar, with its oak beams, and its basket log fire set into a pillared alcove.

#### Accommodation

The Romany Inn boasts an excellent range of accommodation. There are 11 single and double rooms - all ensuite. All have tea and coffee making facilities, and come equipped with a remote control colour TV.

#### Restaurant

Enjoy a meal in our softly-lit dining room, with its open brickwork and gleaming brasses and copper canopied fireplace. Wide choice of menus, including vegetarian. Or you can eat in our comfy bar-restaurant with its open log fire.

## Bampton Cars



Your Reliable and Friendly Service



**National and Local  
Air and Seaports our Speciality**  
Competitive Rates

Tel: 01993 851900

Fax 01993 851909

*Use us Once - Use us Always*

## The Morris Clown A True Free House

*A better quality insult from your hosts*

Tom and Steve

Over 100 Guest  
Beers a Year

High Street, Bampton,  
CAMRA Member Since 1997  
(Campaign for Real Ales)

Proud not to do  
Food!

Darts

Aunt Sally

Bar Billiards

Licensed Integral Function Room

Enjoy the contemporary atmosphere and Moulin Rouge Décor of this old coaching inn, which is the only pub we know to have fully absorbed the principle of the emancipation of the fairer sex, with having the ladies' toilet outside! The gents of course is inside in the warm!

**PHILIPPA RAYNE**  
**Registered  
Osteopath**

**Cranial Osteopathy  
for Babies**

**FIONA FARMER**  
**Chartered  
Physiotherapist  
(Spinal and Sports)  
Therapy + Acupuncture**

**LESLEY MELLIN**  
**Reflexologist  
+  
Aromatherapist**

**MOONRAKER LANE,  
BAMPTON  
OXON. OX18 2JH  
(above the Dental Surgery)**

**TEL: 01993 851359**



## Electric Vehicles Ltd

Moonraker Lane, Market Square, Bampton, Oxon OX18 2JH

### THE ELECTRIC VEHICLE SPECIALISTS

- \* Regular routine maintenance
- \* 24-hour emergency breakdown service
- \* Spare parts for most makes of vehicle from stock
- \* Service exchange units (diffs, motors, steering boxes)
- \* Replacement batteries and chargers
- \* Body repairs and rebuilding facility
- \* New and used vehicle sales department
- \* Charger and battery service facility
- \* Electronic control specialists

**ALL AT COMPETITIVE PRICES**

**For Details Telephone WITNEY (01993) 850714/850025**



(1418)

## Don Rouse Cars

*Fully Qualified P.C.V. Driver*

### AIRPORTS & SEAPORTS

Business Trips

### COURIER SERVICE

Air Conditioned Luxury

PEOPLE CARRIER

Up to six passengers

NON-SMOKING

### Quality local produce direct from the field to your fork

Home produced  
Lamb & Beef

Local Preserves, Apple  
Juice,

Clotted Jersey Cream,  
Butter, Cheese

Home-made Cakes and  
Pies

Fruit & Vegetables

Free Range Eggs



**FOXBURY FARM SHOP**  
**BURFORD ROAD**  
**BRIZE NORTON**

Shop open Thursday, Friday  
and Saturday 10am - 6pm  
01993 844141

Situated just off the A40  
between  
Burford & Asthall Barrow  
roundabouts

Ready made meals  
using Foxbury Farm  
Meat

Flour, including  
large 16kg bags,  
suitable for bread  
making Machines

And lots of Farm  
animals to see in the  
new Foxbury Farm  
Friends Barn

### Curtain Choice

**Makers of Fine Soft Furnishings**  
*A personal and professional service for  
all your*  
**CURTAINS, BLINDS, LOOSE COVERS ETC.**  
*To arrange a home visit and a quote  
without obligation telephone:*

**01993 843103**

E-mail: [enquiries@curtain-choice.co.uk](mailto:enquiries@curtain-choice.co.uk)  
[www.curtain-choice.co.uk](http://www.curtain-choice.co.uk)



Dear Ed.

I would like to say thank you to John Morton for his letter reminding us of yester year Bampton.

I remember John and of course his many relatives who still live in and around Bampton, after all we are talking about an Era when us kids took a pride in being able to name all the people who lived in every house.

John mentioned about our Dad taking different routes whilst going milking down to Weald Farm. Well this was done for a specific reason, you see Dad never had proper lights on his bike, at one time he had an Electric Fencer battery in a Home Guard knap - sack on his back, with wires connecting it to a hand held lamp. This was brilliant for finding the cows in the dark, but definitely not legal on a bike! Bampton's Policeman of the day was the notorious P.C. Richards who had just taken over from our heroic Wartime policeman whom we called "Whisper in the grass". (He had an unusual voice) P. C. Hutchings.

P. C. Richards certainly started off with a bang. His first night on duty he booked 50 Cyclists for improper lights and 47 the second night. So understandably with the many different alleyways and roads available to him, Dad endeavoured to out-wit this new Copper who was Hell-bent on achieving promotion, Dad had already had an altercation with him so he knew what the cost would be.

Prior to us living up New Road, Dad was Farm manager to George Collins at Weald Farm and we lived in the farm cottages there. In February 1948 he acquired the tenancy of Home Farm which is now where Lavender Place flats are, as money was a bit short he kept his job as Farm Manager and ran his own farm in the hours available to him either side of 6.00am and 5.00pm, so he would cycle up to Home Farm to start at 4.00 am. Then return to Weald to start work there at 6.00am. So you see it was quite a work of art to do this and not get caught seven days a week. On one occasion when he was running late, he took the route via Church View and hiding under the shadow of the Old Grammar School was P. C. Richards, "Stop!" He yelled at dad, "I can't stop!" says Dad "I'm ten minutes late already" With that the policeman ac-

## LETTERS and E-MAILS TO THE EDITOR

accompanied him to Home Farm, where upon he enquired of the availability of some Corn for his Chicken, needless to say father replied to the affirmative. No it was not Bribery and Corruption! It was just two people understanding each other's need.

Oh what lovely times they were.

Yours sincerely

Don Rouse

Dear Mr Gray

I have just discovered that my paternal grandfather George Frederick Bedding was employed in 1901 as an Apprentice Printer's Compositor at The Stationer's Shop, Market Place, Bampton. The owner of the establishment was a James Beard, described as a Letter Press Printer and Stationer. I would like to know if the shop still exists - according to your web-site the present day Paper shop is in Bridge Street - as I would like to visit the town at some time in the near future and take some photos. My Grandfather was 21 at the time of the Census in 1901. By 1909 he was living in Bridport in Dorset, working on the local paper. He and my Grandma were married in 1916, my Dad was born in Feb 1917 and Grandad died in Dec 1917. I have only vague memories of what Grandma told me about him, apart from the fact that he was an orphan, brought up by a woman near Oxford. I have traced his birth and know where he was in 1881. 1891 is still eluding me - he may have been in The Poor Law Institution in Witney. As you can see any information you can give me about the place where it seems he may have learnt his trade will be very much appreciated. It will all help to put flesh on the bare bones!

Yours sincerely

Ruth Hounsell nee Bedding

To the Editor of the Bampton Beam, I would like to offer my sincere thanks to Mr. Gray for the Bampton site on the Internet which allowed me to find out more about your town and my father's - Lt. Bill Luther - time in Bampton while preparing for D-Day. Through the site, I 'found' Mr. Gray

and many e-mails were exchanged. The Internet also allowed me to find my father's friend from 58 years ago, Dick Ford. Mr. Ford told me about

their stay with the Bateman's in the vicarage so many years ago. I had found a letter several years ago that was from Mrs. Bateman to my grandparents in Minnesota. Now I could make the connection to Bampton! I was not able to decipher some of the words and asked Mr. Gray to help me. The entire Gray family went to work and clarified the letter for me. Mr. Gray also took pictures of the vicarage, as it looks today, so I could see where my father and Dick lived. I did not know about this part of my dad's life. I laughed at the story of Dick trying to catch the young lady who was hanging from the second story vicarage window as Dad was lowering her down to the jeep.

I looked at the pictures of the vicarage and wondered which window was the infamous one! Dick told me how wonderful the people of Bampton were to them. As I re-read Mrs. Bateman's letter, I was able to see how much she cared about my dad and wanted to know how he was doing. Dad was severely wounded right before the capture of St. Lo and died in 1955 due to the severity of his injuries. I was only six years old, so I don't have many memories of him. Dick Ford and Mr. Gray helped me gain insight into what my father's life was like during the war. This has been quite a journey for me.

Thank you Bampton, and especially Mr. Gray and family for all you have done. I have been receiving the Bampton Beam for over a year and really enjoy it. I hope to visit Bampton in 2004 and see that window!

Gratefully,

Stephanie Luther Rahn  
Walworth, Wisconsin, USA

Dear Ed

May I take advantage of your letter page to express my (and I'm sure everyone else's) thanks to the SPAJERS for a great day at Bournemouth. As a newcomer to being a pensioner, I am beginning to realise some of the gains - and the outing certainly is one! The weather was perfect and we thoroughly enjoyed our visit to the

Aquarium, the trip in a balloon (all the way up and back again!), our paddle in the sea, and the ice-cream on the sand. It all made us feel quite juvenile again.

So, thank you for all your hard work SPAJERS - long may you prosper.  
Linnet Sangwine

Dear Ed.

As a resident of Bampton from 1989 to 1993, I resided in the Horseshoe Inn on Bridge Street. I attended the St Josephs Primary school in Carterton and the Henry Box Secondary school in Witney. Unfortunately it has been many years since I have visited the village, and I have subsequently lost contact with the many and varied friends I made within the village and at school; and despite my many attempts to find them my efforts have all proved fruitless. I wonder if it would be possible to put this letter into The Bampton Beam, where it might just help me to regain contact with at least some of them?

I currently live in Tackley, and can be contacted on my mobile telephone number 07881 956179.

My e-mail address is:

michael.warmington@virgin.net

Thank you

Yours sincerely

M.Warmington

Dear Editor

Having read your August edition, I note that services 18 and 19 are going out to tender once again. The present services are nearly always on time, and the vehicles are clean and user friendly, and the drivers helpful. I cannot understand why the tenders are for short periods. Just as we get used to the service, it is about to change again. I hope that any change is for the benefit of the customers. All forms of transport are vital to the town, and are the lifeblood of many in the community.

I understand Stagecoach are the get the tenders as from October - at a reduced fare. I hope the reduced fares are held and that the service is maintained at the present quality.

By the time the next issue the new services will be running. Let's hope we have new vehicles with plenty of room for shoppers and mums with children, as not all members of the

community can afford to run cars.

Yours faithfully

L Wales

9 Calais Dene

*Stagecoach was the original holder of the contract for the No. 19 service, but when they pulled out, Thames Travel was contracted to take the route over. However, the contract was set to run to the end date of the original contract of October this year.*

*Both the 18 and 19 services were then tendered together, and Stagecoach emerged as the winner.*

*The new services started on 28<sup>th</sup> October, and the contract period is 4 years. Trust this helps clarify the situation.*

Sub-Ed.

## Friends of St. Mary's Endowment Appeal

The Friends of St Mary's was formed in 1994 as a non-denominational charity to help the Church Community Council raise money to repair the spire of St. Mary's. Thanks to the generosity of the people of Bampton and some very successful fund-raising events, in the last eight years we have raised nearly £100,000. However, £55,000 of this has had to be spent on the repair of the spire, the replacement of the statue of St. John the Baptist, the restoration of the Norman and West doors, various essential structural repairs and the rewiring. Most of the urgent repairs have now been carried out.

The Friends now wish to revert to the original aim which was to build up an Endowment Fund of more than £200,000 the income from which would be available to the Church Council to help with the never ending repairs to the structure which cannot be met by the congregation and those on the Church Electoral roll.

We have a magnificent Grade 1 listed church dating a back to the 10<sup>th</sup> Century or even earlier. Our forefathers built this church and ever since Saxon times countless generations have maintained it with care and devotion. It is now our heritage and responsibility. Even if we do not worship in it regularly we have a duty to preserve this heritage for future generation as it has been preserved for our benefit.

The Friends of St. Mary's is a registered charity and entirely independent from the Community Church Council. It has five Trustees who are:

Lord Donoughmore representing Bampton Parish Council.

Mr Chris Ruck representing St. Mary's Community Church Council.

Mr David Rose representing St. Mary's Bellringers.

Mrs Molly Rose & Mr Jonathan Phillips representing the people of Bampton who are not on the Church Electoral Roll.

In the coming year we will be approaching those who have not already made a contribution and those who have moved to Bampton since the last appeal was made. Donations from tax payers, both lump sums or amounts paid on a regular basis, can be significantly increased by Gift Aid which enables the charity to claim back the tax that has already been paid. If you are willing to help, please contact any of the Trustees. They will be happy to discuss a donation in a way to suit your own circumstances. Perhaps you would rather make a donation in the form of a legacy in your will, this would be equally welcome. Legacies can be discussed with your own solicitor or with any of the local solicitors who are listed in the Bampton Directory.

Please be generous and help the Friends of St. Mary's reach its target.

## The Methodist Chapel

### The Drop-In

The Drop in closes on Monday December 16th at 1.30pm. It re-opens on Monday January 6th at 12am.

We are in need of helpers, so if you are interested please contact Hazel Shaw.

### Future Dates

December 1<sup>st</sup>: Seeker Service 7pm, The Romany Inn, Bampton.

December 7<sup>th</sup>: World Church Mission Morning 10am - 2pm Methodist Chapel.

January 28<sup>th</sup>: Church Council Meeting 7.30pm Methodist Chapel.

### House Group Meetings

21<sup>st</sup> January: Backhouse Farm 7.30pm.

18<sup>th</sup> February: Fairacres 7.30pm.

18<sup>th</sup> March: Ampney Orchard 7.30pm



## Health Check

**The NHS Plan in 2000 stated that:** 'Health Check' set up by the Community Health Council is a way of obtaining your views both good and bad about the healthcare you receive. We want you to tell us about your experiences in the NHS by filling in a 'Health Check' form. Your comments will be passed on to NHS staff across your area and the Community Health Council will provide a response to you individually on the resulting action that arises from your comments. You can report on any aspect of the NHS that you have used within the last six months. You can report on someone else's behalf as long as you have their permission. All that you tell us is confidential.

For more information contact the **Community Health Council: Tel: 01865 723569** and ask for a 'Health Check' form and freepost envelope.

## Does Mental Health Matter to You?

**Would you like to help other people find a way through their problems?** Oxfordshire Mental Health Matters provides interesting Volunteering Opportunities in a friendly environment in **Information, Advocacy and Administration Work**. Full training is provided.

For more information, **Tel. 01865 728981**, call in at 19 Paradise Street (nr the Westgate Shopping Centre) or e-mail [info@oxford-mentalhealth.org](mailto:info@oxford-mentalhealth.org).

## Patient Advice and Liaison Service (PALS)

Here to help when you need advice, have concerns or don't know where to turn.

As a patient, relative or carer sometimes you may need to turn to someone for on-the-spot help, advice and support. This is where the Patient Advice and Liaison Service (PALS) comes in.

We provide confidential, on-the-spot help advice and support, helping you to sort out any concerns you may have about the care we provide, guiding you through the different services available from the NHS.

The Patient Advice and Liaison Ser-

vice (PALS) focuses on improving the service to NHS patients. The service aims to:

- Advise and support patients, their families and carers
- Provide information on NHS services
- Listen to your concerns, suggestions or queries
- Help sort out problems quickly on your behalf.

The service is confidential. If you would like to contact PALS with a query or for advice or information please write to Hayley Reynolds PALS Co-ordinator, Freepost 13534, Bicester, OX26 6BR.

Email [helpline@neoxon-pct.nhs.uk](mailto:helpline@neoxon-pct.nhs.uk)

## Could you be an Independent Parental Supporter?

The Oxfordshire Parent Partnership Service runs a very successful volunteer scheme called the Independent Parental Supporter Scheme.

Unfortunately, due to a combination of unforeseen circumstances, some of our volunteers are unable to participate at present.

As parents and schools become increasingly aware of the helpful nature of the support that an Independent Parental Supporter can offer, we regularly receive requests for help.

We try to ensure that none of our volunteers are overloaded or persuaded to unrealistically commit themselves, so we wondered, are you:-

- a good listener?
- friendly and approachable?
- aware of need for confidentiality?
- interested in education?
- not afraid to ask questions?
- reliable?
- Looking for another interest?

Then you might be just the person we are looking for to be an Independent Parental Supporter. (IPS). IPS give help and support to parents in Oxfordshire who have children with Special Educational Needs, when they have difficult decisions to make about their child's education.

1 in 5 children will need some extra help at sometime during their school life. The system that supports children can be quite confusing for parents.

*That's where you come in!*

An Independent Parental Supporter can be there for a parent at a difficult time, perhaps by helping with the paperwork, attending a meeting with them or just by talking things through. We offer training and pay your expenses so you won't be out of pocket.

### Interested?

For more details, please ring:

Parent Partnership **Tel: 01865 810516**

### Training sessions

Autumn, Thursdays: October 31<sup>st</sup>, November 7<sup>th</sup>, 14<sup>th</sup>, 21<sup>st</sup>.

Oxford College of Further Education, Oxpens Road, Oxford.

Winter, Saturdays: March 1<sup>st</sup>, 8<sup>th</sup>, 15<sup>th</sup> and 21<sup>st</sup>.

All sessions are from 10 -12.30.

## Volunteer Link-Up

**Bored? Lonely? Missing Work Time on your hands? Under-Used Skills?**

Perhaps volunteering is the answer?

It could mean a whole new lift to your life in 2002. There are lots of opportunities to use your time in helping individuals and groups in Witney, Carterton and the surrounding villages. Just **Tel: 01993 776277** and speak to Anne, Alison or Ruth at Volunteer Link-Up. Office hours: 9am - 1pm, Monday to Friday at the Methodist Church Centre, Wesley Walk, Witney. E-mail [westoxonvb@freeuk.com](mailto:westoxonvb@freeuk.com)

# AGE Concern

**OXFORDSHIRE City & County**

**Voluntary Work that makes a difference**

Our Information & Advice Service is looking for volunteers: To help staff the Telephone Helpline at our office in Oxford and to visit people in their own homes to help with form filling and benefits checks. No particular qualifications required. People of all ages welcome. We offer training, plenty of support and expenses. For more details telephone:

**Sandra or Jenny Tel: 01865 247852**

## Bampton Environmental Watch Group

*By Ralph Norman*

### October BEWG Report

The speed of traffic through the village is an on-going concern of the executive committee and as a result of negotiations between Oxford County Council and the Parish Council, a little progress can be reported. First, the County Council has resealed drain covers, resulting in some noise reduction; also, the 30mph speed limit has been extended further along the Clanfield Road. Members intend to lobby our MP David Cameron about this subject.

BEWG expressed its regret at the closure of yet another village pub, the Elephant and Castle, and its alarm at the overturning of the Planning Inspectorate's decision of a year ago, refusing change of use to the Jubilee. WODC also made strong representations about this, but were advised that there were no grounds on which to challenge the decision. It is to be hoped that the many traditions connected with these two pubs can find good homes elsewhere in the village.

It is good to report that the BEWG footpath map, which was originally printed in past issues of the Beam and now appears on the new Parish Council noticeboard in the Market Square, is now to be printed in leaflet form and distributed free to every Bampton household, under the auspices of the

## Aston Parish Minibus

Although the Aston Parish Minibus is outside the boundary of Bampton Parish, the Bampton Parishioners are not excluded from its services. An example of this is with the Lavender Place Flats. The residents there hire the bus on a regular basis. This is also true for Bamptonians wishing to go shopping to Swindon once a month.

Perhaps we may make ourselves better known to the Bampton residents by informing them, via *The Bampton Beam*, that the Aston Minibus is available for self drive hire at £10 hire fee, plus 50p per mile.

The minibus also passes through Bampton to Swindon, as well as Blunsdon (market and ASDA) and will pick up interested passengers outside the Londis Shop.

**Swindon: every first Saturday of the month. £3 return. Blunsdon Market and ASDA: every third Wednesday of the month. £3 return.**

We hope to resurrect the Morton-in-Marsh Market shopping run next April and Bampton residents will be welcome to use this service. This journey will also be £3.00 return. Contacting the following may reserve seats, for any or all of these journeys

**Eric Judge: Tel: 850280, for minibus hire & Swindon.**

**Terry Fretten: Tel: 850637 or Jim Etwell: Tel: 851629, for Blunsdon.**

For more Information concerning this Bus run contact Terry Fretten Tel: 850637.

Bampton Directory, through the good offices of Susan Phillips. Susan is seeking additional funding for this from WODC who have indicated their support to her. Free copies of the map will also be available from local Tourist Information Offices.

Copies will also be available from local Tourist Information Offices.

On 31<sup>st</sup> July 2002, Jean Saunders of Friends of the Earth made a welcome return to speak in the Village Hall on the subject of recycling "Living Without a Dustbin". Jean amazed her audience by producing, in just one plastic bag, a year's waste for four cats and two people! She told us that one million plastic bags are given away by supermarkets and shops each week. The audience was given many tips as to how to reduce waste, such as taking bags with you to avoid bringing home new ones, removing goods from bags and leaving them in the shops, reusing envelopes, using a deodorant stone, which washes clothes without soap – and many others. We were all greatly inspired by Jean's enthusiasm and left, resolved to try harder to conserve the world's resources.

On the planning front, an important decision has been made by WODC to allow the conversion of a listed barn at Backhouse Farm, off Primrose Lane, to dwellings and also the conversion of existing outbuildings to form four class B industrial units and the demolition of two modern barns. BEWG supported the original application which has conditions attached relating to times of operation, fumes etc.

The next open meeting will be on 30<sup>th</sup> October when the speaker will be Jenny Freeman, of the Historic Chapels Trust in London who will be accompanied by the local representative, Andrew Long. They will speak about Cote Chapel in Aston, which members were fortunate to be able to visit in September, for a guided tour and talk given by Mr Sale of Aston. The meeting will take place in the Village Hall at 8pm and non-members are welcome for a donation of £2.

## THE BAMPTON DIRECTORY

The Bampton Directory has been updated and reprinted. Copies have been delivered free to all households and businesses in Bampton and extra copies are available from The Post Office and Abbey Properties. The Editor would like to thank all those who have supported this edition by paying for advertising.

The first Bampton Directory was published in 1983 and if you would like to see how it has developed over the last 20 years, copies of past editions are on display in the Robert Vesey Room.

### Help - Susan's Retiring!

After 20 years, the editor, Susan Phillips, has decided to retire, so to keep the Directory going we need someone to take it on!

**If you are interested, please contact Fenella Gray Tel: 851653 or Susan Phillips Tel: 850321.**

*I am sure everyone here in Bampton will join me in saying a big Thank You to Susan for producing the Directory for so long. It's such a useful booklet, and so well used in our family. Let's hope someone with a little bit of time to spare will come along all keen to take over. Ed.*



## OUT AND ABOUT

### Bampton Nomads v Bampton Cricket Club

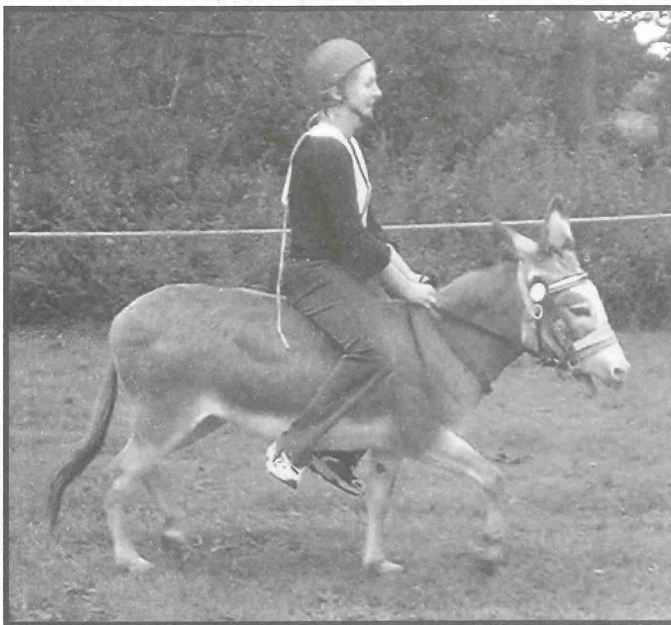


An Honourable Draw

### The Donkey Derby



Well Supported as Usual



Not Quite There Yet!!

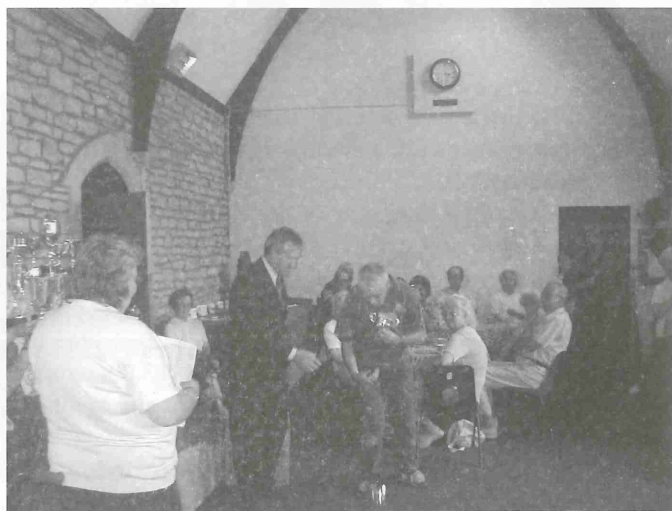
### Gardening Club Annual Show



Now Why Did *That* Win?



Gemma Henderson (10) and Abbie Warner (5)  
Proud Winners in the Children's Categories



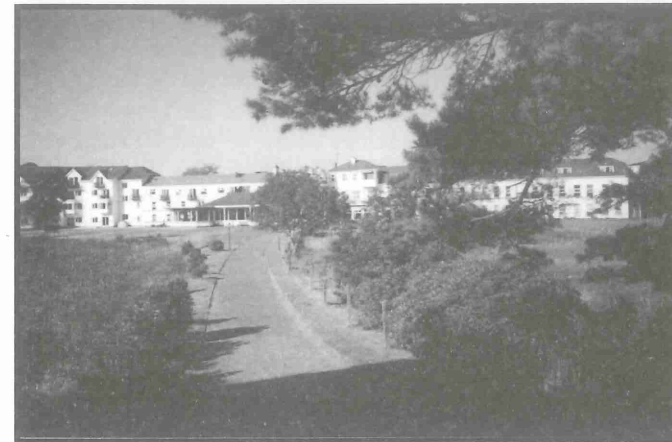
The Chairman Presents Prizes  
to a somewhat surprised Ian M<sup>c</sup>Lintock

## OUT AND ABOUT

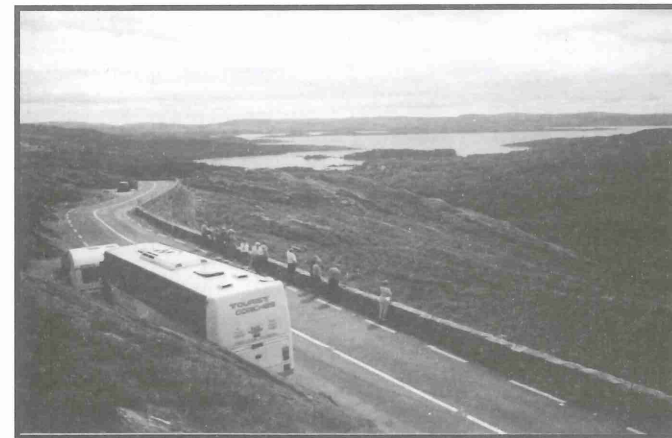
### The Gardening Club Goes To Ireland!



The Base Camp!



The Lake Hotel, Killarney



Day Trip : Bantry Bay In The Distance

They have been some time in coming, but at last, mid-November, the big day arrived!  
The bollards at the entrance to Cheyne Lane have finally been installed!

### Bampton Archery Club Annual Dinner



George Woolliams with his Trophies

### Children In Need



HSBC Staff Doing Their Bit As Usual





**LIGHTS OF LOVE 2002**

**Sobell House Hospice,  
Churchill Hospital, Oxford**

Every Christmas, a giant Lights of Love Tree is erected outside Sobell House Hospice covered in lights in memory of loved ones who are no longer with us. This year, the Lights of Love Tree will be lit on Saturday 7<sup>th</sup> December at 3.30pm. A short service will be held near to the tree and guests will have an opportunity to view the Book of Remembrance.

If you would like details of how to take part in this service or would like to dedicate a light in remembrance of a loved one please complete **Tel: 10865 883339** to find out more.

**Bampton Classical Opera**

Saturday 21 December, 7.30pm,  
Festive Concert

St Mary's Church Bampton  
Tickets £9 from Abbey Properties or  
at the door

**Bridewell Gardens**

**Saturday 14<sup>th</sup> December, 7.30pm**

A Concert of Seasonal Music at the Methodist Church, High St, Witney. Performances by the St. James Singers, Annabel & Harriet Molyneaux and Isis Middle School Choir. Tickets (inc. refreshments): Adults £5, Concessions £4, Children £2. Available on the door or from the Music Stand, High St, Witney or Mental Health Matters, Paradise St, Oxford.

All proceeds to Bridewell Organic Gardens (Reg. Charity No.1069878), therapeutic gardens in West Oxfordshire.

**The Bush Club**

Cooks, Drivers and Helpers are urgently needed. An hour or two now and then would be very helpful. The Club meets every Wednesday in the Scout Building, Church View, and caters for up to 40 pensioners. We provide tea, coffee and a hot meal. For more information please contact **Joan Granville, Tel: 01993 850407**.

The Bush Club celebrated its 17<sup>th</sup> anniversary on Wednesday 13<sup>th</sup> November - to the actual day! Everyone who attended celebrated the event by enjoying a glass of wine!

**NOTICE BOARD****Old Birthday Cards**

Please continue to give me your Birthday Cards, after you have enjoyed them, so that I can continue to make money for worthy causes. This year the following received £100 each: Mullers Homes (Bristol); Bampton Museum; Junior Church; Alan and Wendy's sponsored ride from Land's End to John o' Groats for the Perthes Association. £50 to Sobell House and Multiple Sclerosis; and a little to the Vesey Room for their kindness in letting me sell them there. Daphne Gaydon, 3 Broad Street

**Youth Centre**

The Youth Centre occupies the old Victorian Primary School in Church View which was saved from dereliction to create a facility for the young people of the area largely due to the efforts of the people of Bampton in 1984.

With the exception of a part time caretaker, the Centre is entirely run by a committee of volunteers and the only regular funding is now from the village "250 Club". The remainder of the income comes mainly from rentals, and this includes payments by the County Council for use of the premises by the Youth Club. The Centre has also benefited over the years from generous donations by the Bampton Welfare Trust towards the cost of major capital projects.

We are now, more than ever, dependant on rental income and anyone wishing to run a family or children's party or holding a dance or disco should consider using these excellent facilities with a great atmosphere and more than ample parking space.

To rent the Centre, please contact -  
**Jill Ruck Tel: 852010.**

**The Secretary, Colin Allport Tel: 850411** is happy to answer general enquires.

An Extraordinary General Meeting is being held on Tuesday 3<sup>rd</sup> December to consider a revised constitution for the Centre. This is in preparation for a possible application for official registration as a charity. This meeting will be open to the public and such participation is very welcome.

The senior youth leader, Gary Gummer, has been on sick leave for the last few months and we hope that he will soon be restored to full health. In the meantime, the Youth Club continues to operate very successfully under the direction of the youth leader, Dawn Woodcock. The youth leaders would like to contact anyone who is prepared to assist in supervision of Club meetings and enquiries in this respect or with regard to young people joining the Club should contact the area youth organiser, **Jo Melling Tel: 842416**.

The Scouting organisation has still not been able to re-establish itself as it has been unable to find leaders. Anyone willing to assist should contact **Phil Roberts Tel: 851267**.

**Bampton Bridge Club**

The Club meets in the Village Hall every Tuesday, 7.30 pm to 10pm. Duplicate Bridge is played on the 1<sup>st</sup>, 3<sup>rd</sup>, and 5<sup>th</sup> Tuesday of the month.. Rubber bridge on the 3<sup>rd</sup> and 4<sup>th</sup> Tuesdays. The annual subscription is £5 with a charge of £1.00 per session. New members are always welcome. For more information contact, **Joan Granville, Tel: 850407**

**Bampton Exhibition Foundation**

The Foundation exists to maintain the Old Grammar School building (now the Library), and to provide financial support to young people residing in the Ancient Parish of Bampton, Aston, Lew and Weald. The financial help is for young people who would like to participate in any academic or sporting course or activity of educational value which would otherwise be beyond their means. We try to offer a bursary of 50% of the amount required. Anyone who feels they qualify (or knows of someone who may do so) should contact the Correspondence Secretary, **Roger Snow, 40 Bushy Row, Bampton, OX18 2JU or Tel: 850113**.

**Bampton Ladies Group**

We are a very casual group of ladies who meet in the Village Hall on the third Wednesday of every month at 8pm. We have speakers or go on out-

ings and just have a pleasant evening together. Posters are put up around the village, so if you spot one and would like to come along please do. The membership is £6 yearly but your first visit is free. For further information please contact **Joan Farthing Tel: 851206**.

**Capold****A new scheme needing Volunteers**

People with learning disabilities have decisions made for them all the time - decisions about where they live, what they do during the day and whom they live with are made for them because they are not able to express what they want or they are not asked. Citizen advocacy is a way to support people in having their voice heard and in being part of the decisions made about their lives. Volunteer advocates work one-to-one with their partner (the person at risk of not being heard), getting to know them and their wishes and helping to have those wishes heard by the appropriate people. For some it may just be that they want more choice in what they eat, others may want a complete life change! The advocate's role is not to decide what they should have or whether what they want is good for them, it is to support them in making an informed choice and help them get that choice heard by the people who can make a difference, be they parents, carers, friends, social or health services.

**Capold** (Citizen Advocacy for People of Oxfordshire with Learning Disabilities) is a relatively new scheme set up by Oxfordshire Advocacy Development Group (Registered Charity no: 1015858) and funded by the Department of Health. It provides citizen advocates for people with learning disabilities and supports the partnerships formed with advice, information and expenses.

**Capold** needs volunteers to work with all the people being referred to the scheme, so if you or someone you know has a few hours to spare, weekly or fortnightly, and would like to help make a difference to someone's life, then please contact: **Helen Bloomfield Tel: 01865 741293**  
**e-mail capold@btopenworld.com**.

**NOTICE BOARD****A Tribute to  
George Winfield**

It is with great sadness that the Gardening Club learned of the death of George Winfield, its President for so many years. George was acknowledged to be an excellent gardener, and was always happy to assist anyone else with their gardening problems. He will be sadly missed.

**Bampton Gardening Club**

The Bampton Gardening Club held its AGM on Friday 15<sup>th</sup> November at the Village Hall. The AGM was very well attended - around 30 members were there, a record for many a year! Apart from the AGM, the members enjoyed a slideshow, covering the many trips run during the year, and cheese and wine! The following were elected to the Committee:

President: Ray Taylor  
Chairman: Vacant  
Secretary: Fenella Gray  
Treasurer: Tony Jenkin  
Show Secretary: Fenella Gray  
Membership Secretary: Gill Gummer  
Social Secretary: Ellen Parker  
Trophy Secretary: Christine McLintock  
Allotments: Phil MacFarlane  
General Members: Gary Gummer, Mollie Jones, Chris Hickman

**Outings for 2003**

The list of Outings for 2003 is nearing completion and will be sent out to all members shortly.

Two Outing early in the year are:  
**'Holiday on Ice':** A trip on 9<sup>th</sup> March to see this spectacular show when it visits Coventry.

**A Day at the Races:** A trip to the Cheltenham Festival on 12<sup>th</sup> March. Some places are still available for both of these events - and you don't have to be a Gardening Club member to go along. If you are interested, please call **Ellen Parker** on **01993 843985**.

**Bampton French Book Club**

Having recently moved to Bampton from Swindon where I ran a French Book Club, I am wondering whether

there may be interest in the village to set up a similar club here. The Swindon club proved very popular amongst those who had attained a good standard of French - roughly A level - and who wished to maintain this level without committing themselves to formal weekly language classes. The meetings would be roughly every two months, where a book which had been chosen in the previous session would be discussed. The only cost involved would be the purchase of the book - less than £5 per session. Interested? Please contact: **Grace Wilkins, 3 Beam Paddock**.

**Coronary Care Unit**

A big Thank You to everyone who gave such generous support at the Coffee Morning held on Saturday 31<sup>st</sup> August, from which £400 was raised. The money is to be used towards equipping the Nurses Rest Room within the Coronary Care Unit.

Daphne Pullin would also like to say a big thank you to everyone for coming along to the Coffee Morning, and especially her daughters and their families for all the support they gave her.

**Some Useful Telephone Numbers**

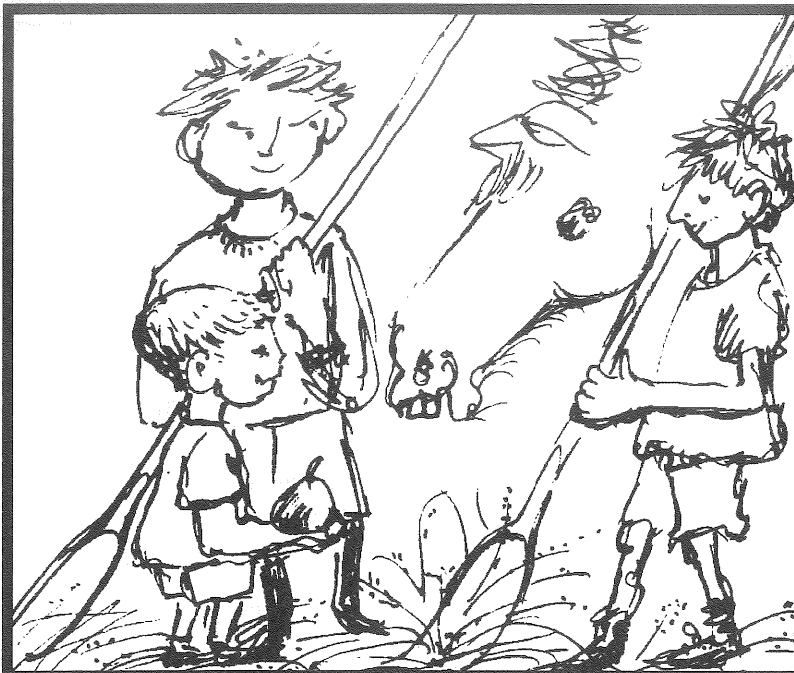
Police	Witney	01993 703913
	Carterton	01993 893951
	Urgent	01865 266000
Witney Hospital		01993 602900
Minor Injuries Unit		01993 602966
Power Cuts		0345 708090
Gas Emergency		0800 111999
Water & Sewerage		0645 200800
BT General Enquiries		0800 309409
BT Line Fault		151
Env.Services		01993 770222
Abandoned Vehicles		01993 770308
Bulky Waste		
	Collection	01993 770222
Witney Town Council		01993 704379
Tourist Information		01993 775802
Citizens Advice		01993 705691
Train Information		08457 484950
Trading Standards		01865 815000
Bampton Surgery		01993 850257
	- out of hours	01993 851616
Witney Health Centre		01993 703641
Stagecoach Witney		01993 702197
WODC		01993 702941
Lost & Found		01608 659029
Clerk Parish Council		01993 850776

## OUT OF WORK FARMER - TURNED AGRICULTURAL CORRESPONDENT

By Don Rouse

Is it a sign of achievement or does it mean that one is past it i.e. over the hill, when ones photograph and articles for the Beam are on display in a Museum? All credit to those who have worked so hard to put on such a magnificent display in the Vesey Room of the Old Grammar School. It showed the importance of Agriculture in Bampton not so long ago, a bit along the theme of my last Beam article.

I must admit to having a feeling of great contentment about the era I have lived through. I have worked with horses picking up sheaves of corn from the harvest field; at the age of nine working with a wire tied baler threading the wire through needles to make the bales; all for two and a half pence an hour which was a very good rate for that era. Youngsters today are not allowed anywhere near farm machinery until they are thirteen years of age. I know that farm machinery is much "Higher Tech" nowadays and moves at a much faster rate, therefore making it much more dangerous than



in our days. But I still feel that it is a shame that youngsters are deprived of the experiences of the life on a farm that I have enjoyed. I never worked with steam engines but I have enjoyed the thrill of watching Messrs Wilcox and Frost of Witney bringing their steam powered Threshing Machine to Weald Farm in the early 1940s. The ironic thing is that this unit was operated by a Dick Hunt who lived only a few doors away in Broad Street from Harry Pocock who soon took over all the threshing work in the area by using the much more maneuverable "Baby Fordsons"; he had what you might call a monopoly. The amazing

thing about this era was all the dangers that abounded, all the unprotected drive belts and pulleys, and yet to my knowledge no one was ever injured. The most common injury of the day was sticking a pitchfork through your Wellie. I would think the Health and Safety Executives of to day would probably insist on the pitch-forks being fitted with guards; you would not be able to pick up the sheaves of corn but at least your feet would be safe! All part of the namby pamby State we have become. Yet in those days there was a high degree of

self-discipline, you just knew where and what the dangers were and you knew better than to go there, even aged nine.

'They Think It's All Over' is the title of a T.V. programme and I am sure that ninety per cent of people think that is the case with the Foot and Mouth Disease, but it is not! There are many farmers still awaiting payment for their animals slaughtered unnecessarily, whilst people in the allied trades such as hauliers who were used during the epidemic have been paid thousands of pounds. A case of the Government still kicking the farmers because they are small

fry.

Movement of cattle is not easy but possible with strict control. We think that this is a good thing as the wide area from which the disease exploded last time was the most devastating part of it. The paperwork that is demanded of the industry is now, however, absolutely ridiculous, no doubt keeps an army of paper pushers busy - which, of course, helps to keep the unemployment figures down and will bode well next election time. So I cannot see the Government altering the situation just yet!

My brother Colin, who is my chief informant, recently had fifteen feet of paperwork relating to the movement of animals. Where is the sense in all of this? It is not even recycled paper!

When you or I sell a car there is only one form to send off, simple; but when an animal is sold, that is totally different. Both the person selling and the person buying are responsible for informing the authorities of what is happening to that animal. And the animal's own Passport, of course, must accompany the animal. When an animal is born it has to be registered, ear tagged with its individual number and a Passport applied for. When it dies, a death certificate has to be issued and forwarded to the authorities. It is much easier, I am reliably informed, to register a baby than a calf, although

I haven't had much experience of either for quite some while! This must take all the joy out of seeing a calf being born. In my day when I assisted a baby calf into the world, I would say to the calf 'welcome to my world'. Nowadays I would think farmers are saying 'Here's more ruddy paperwork'. Farmers now must keep a daily register of the animals on their Farm, then at the end of the year the Authorities will ask some trick questions such as how many cows were on the Farm on six specific dates in the previous year. With the aid of their computers and all the forms, which they have re-

ceived, they will know instantly but how do they compare with the notes that the harassed Farmer made at the time? On the day in question he may have had a cow die and two calves born, did he record it all properly? Because if he didn't he is in big trouble. Subsidies will be withdrawn and he could be accused of false accounting, which of course is a criminal offence. It seems that today a Farmer needs to have a Lawyer and an Accountant looking over his shoulder all the time. What happened to the lovely days when a Farmers only problem was making sure that the back number plate on his trailer was visible and bore some resemblance to the number of the tractor pulling it. We always had nice thoughts about the local Constabulary, we always hoped that they were having a day off or a "Lie in" so that we could get on with our work uninterrupted.

Still on the subject of authority. A small Slaughterhouse in Yorkshire has three officials watching over two slaughtermen whilst they work, one of these officials is a vet and I know that they do not come cheap. So who is paying for all this? Well at the end of the day I suppose it is the person buying the meat i.e. you and I. I am all in favour of our meat industry being the best in the world, but I do think that some times we go over the top. The Vet is there to agree with the slaughterman that the animal is dead! A job that slaughtermen have been doing on their own for centuries!

The biggest problem that the British farmer faces is the British people! Oh yes the



Colin and Pauline Rouse with 'The Paperwork'!

public condemn our Farmers for "Factory Farming" even though we are complying with the EEC rules, then they go into the super markets and buy foreign food from countries with very dubious animal welfare practices because it is cheaper. I am told that 98% of all Salmonella cases this year in the U.K. came from people eating eggs from Spain. Anybody buying Eggs from sources other than our local Farmers deserve the Belly-ache. So this Christmas be safe, have a good time. Buy British, you know it makes sense.

## A Tribute to Miss Farmer

By Don Rouse

It is with great sadness that I report of the death of one of our oldest members of the SPAJERS, Miss Farmer.

There is no woman in Bampton who was more loved and respected than her. Many of Bampton's pensioners were taught by her and have lots of stories to tell about her love, care and kindness to us all as infants in her class.

She taught us to tie our shoelaces, to tell the time and to help us with our basic toilet needs.

She taught us how to play and how to respect all the things around us.

It was all done in a lovely quiet way, with those lovely brown twinkling eyes.

In my work as a WOX DOC driver I was able to visit her in hospital a lot. She was always appreciative of my visits but the joy was all mine. Many times I had to chastise the nurses for calling her Mary, because to all of us, young and old alike, she was our Miss Farmer.

It was brought home to me just how respected and popular she was in Bampton, when at our Donkey Derby a few years ago she won the top prize in the raffle. The cheer that went up could have been heard in Witney!

Whether you are religious or not I am sure that there are hundreds of people saying "Thank you God for giving us Miss Farmer".

She will be sadly missed.



**PATRICK STRAINGE**

(Butchers)

Bridge Street, Bampton, Oxon

Tel: 01993 850350

**Quality Meat Direct From Our Family Farms**

Hire of Pig Roasts for Parties etc.

**Extensive Range of Cheeses Now Stocked**

**Now Taking Orders for Christmas**





**OXFORD**  
DOUBLE GLAZING  
Established 1964

## Simple, Straightforward Advice

Buying double-glazing need not be complicated! Let us advise you on windows, doors, conservatories, patio doors, sash windows and secondary glazing - no pressure, no obligation.

**Call (01865) 517200**

E-mail: [info@oxforddoubleglazing.com](mailto:info@oxforddoubleglazing.com)  
[www.oxforddoubleglazing.com](http://www.oxforddoubleglazing.com)

### Opening hours:

9.30 - 5.30 Monday to Friday  
10.00 - 4.00 Saturday

### Showroom

3 South Parade, Summertown, Oxford OX2 7JL



## GREY GABLES GARAGE

CURBRIDGE, WITNEY, OXON OX18 7PD

Telephone  
01993 702609  
Fax  
01993 774169

**NEW SKODA**

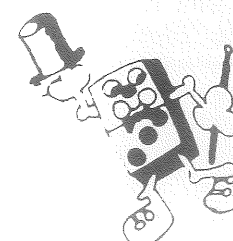


**DEALER**

New & Used Cars  
of other makes available

MOT and garage repairs

# DOMINO



*Quality Menswear*

44 Corn St. Witney  
Tel: 01993 771413

FORMAL HIREWEAR  
SPECIALIST

EVERYTHING FOR THAT  
SPECIAL OCCASION

IMMEDIATE HIRE OF

AGENTS FOR

Dinner Suits  
Morning Suits

Highland Wear  
Page Boy Suits  
Lounge Suits

## THE STANDLAKE GARAGE

Proprietor: Peter Saxel  
153 Abingdon Rd, Standlake, Oxon OX8 7RR  
Tel: 01865 300203

**REPAIR AND  
SERVICING TO ALL  
MAKES OF CAR**  
(Collection and Delivery Service)

M.O.T. TESTING STATION - PETROL  
DIESEL - ACCESSORY AND  
CONFECTIONERY SHOP - TYRES,  
BATTERIES & EXHAUST SYSTEMS  
ALL AT COMPETITIVE PRICES  
(Fitting free of charge when supplied)  
WHEEL BALANCING  
CRYPTON TUNING  
COAL, PARAFFIN, BARBECUE FUEL

**DON'T HESITATE TO  
CALL US  
ALWAYS HAPPY TO  
ASSIST**

# LONDIS

**MARKET SQUARE, BAMPTON**  
*OPEN 7 DAYS A WEEK  
UNTIL 10PM*

**YOUR FRIENDLY COMMUNITY SHOP  
AT YOUR SERVICE**

ELECTRICAL METER KEYS CHARGED · NATIONAL LOTTERY · TOP UP MOBILE PHONE CARDS  
'ET VOILA' FRENCH BREAD BAKED ON THE PREMISES · FRESH FRUIT & VEGETABLES  
FRESH MILK & CREAM · FREE RANGE EGGS · WINES, SPIRITS, BEERS & CIDER  
COOKED MEATS & BACON · FROZEN FOOD & GROCERIES · POSTAGE STAMPS · VIDEO HIRE

**OPEN** EVERY SUNDAY UNTIL 10PM  
BANK HOLIDAYS UNTIL 10PM

**WE DO NOT CLOSE FOR LUNCH**

**R. Cooper**

BUILDERS - PAINTERS - DECORATORS

CARPENTRY - JOINERY - GENERAL HELPERS

SPECIALISTS IN DRY STONE WALLING

The Old Gasworks, Aston Road, Bampton  
Oxon OX18 2AL  
Phone/Fax 01993 851851

## BOJANGLES

Rosemary Lane, Bampton  
01993 850850

All aspects of hairdressing  
Woven Highlights + Perms  
Gents & Children  
Senior Citizen's Days

Tues, Wed, Thur 8.45am - 5pm  
Fri 8.45am - 5.30pm  
Sat 9am - 2pm

*Appointments not  
always necessary*

Do you suffer muscle aches  
or pain caused by injury,  
occupation or lifestyle?  
A course of Remedial/Sports  
massage could help!

Contact

Dawn Puckey  
MGCP IIHHT ITEC

**'Bodytalk'**

Bampton  
Tel: 01235 524309

## THE BAMPTON RECREATION GROUND

Buckland Road, Bampton.

### Recreation Ground Sporting Activities

#### Bampton Youth Football Club

Sec: Mrs Mandy Bowman, Tel: 850116.

Under 13s Adrian Smith Tel: 212549.

Under 9s Alan Day Tel: 210093

Under 6s Philip Walker Tel: 852361

Meetings at The Talbot Hotel every 1st Wednesday of the month at 8pm.

#### Bampton Archery Club

Chairman: John Hill Tel: 850513.

#### Short Mat Bowls

Mr G. Taylor Tel: 850566

#### Bampton Tennis Club

Membership fees for 2002/03

Adults £25

Juniors £5

Family Membership £50

(2 adults + 2 children)

Membership Secretary:

Gill Berry Tel: 850963

Chairperson:

Penny Fowler Tel: 852357

#### Club Night - Thursday

Don't forget you can hire the 'all weather' court for 5-a-side football, netball, basket etc.

### Other Sporting Activities held in Bampton

#### Bampton Town Football Club

Chairman :Mr J. Shuker Tel: 850830

Sec: Mr S. Paintin Tel: 850871

#### The Horseshoes Football Club

Chairman: Alan Clarke Tel 850201

Manager: Bill Godfrey

#### Bampton Gun Club

Sec: Debbie Holifield Tel: 01451 822327 or Trevor Gardner Tel: 850950.

Clay Pigeon Shooting: Sunday 10-12am

#### Bampton Weightlifting Club

Chairman: Don Rouse Tel: 851480

Sec: John Davies Tel: 702266.

#### Bampton Badminton Club

Enquiries: Judy House Tel: 851406

Meets every Tuesday 10 - 12am

Bampton Village Hall.

### Bampton Archery Club News

The results of the Awards handed out at the Annual Dinner are as follows:

"Outdoor Handicap Trophy": George Woolliams (from Clanfield), one of the juniors. This trophy is awarded for the most improved Archer in the club. He beat the club record doing so, and it is very unlikely that this feat will be matched again. His Handicap was 87 but improved to 66 during the year. 2nd: Andy Briggs, now on a handicap of 51 (improvement of 11 points). 3rd: Harry Weaver from Bampton, another junior, with a handicap of 83 (improvement of 6 points). Best Handicaps overall Gerald Mills - 45, John Hill - 47, and Paul Norris - 49.

### Carterton Squash Club

Carterton Squash Club is celebrating its 25-year anniversary. The club be-

### THE PAVILION

The Pavilion, with its large social area, changing rooms, referees' facilities, kitchen and bar is for hire by members of the public for all varieties of functions such as wedding receptions, birthdays or anniversary parties. The Multisport court can also be hired for games or practice sessions for floodlit tennis, basketball, and netball.

#### Some General Hire Prices

General Hire £5 per hour

Commercial Hire £15 per hour

Morning Session

8am - 1pm £20 per session

Afternoon Session

1pm - 6pm £20 per session

Evening Session

6pm - 1am £60 per session

Wedding Receptions

Whole Day

8am - 1am £150 per day/eve

Football Pitch £25 per game

For more information on charges and facilities for hire please contact:

Ray Willis 01993 852483 or 07855 537559.

gan at its current premises on Swinbrook Road in 1977. Located next to Carterton's outdoor swimming pool, the Club has been growing from strength to strength, and is always on the lookout for new members.

The Club has its own member's ladder and has two teams competing in the Oxfordshire County Squash Leagues. Every Friday, the Club hosts a 'Friday Friendly', starting at 7.30pm, where members and newcomers, of all levels of experience, can play - however many games they can handle! They can then enjoy a relaxing drink at the licensed bar.

To celebrate the anniversary, the Club will be holding an in-house squash tournament and a Christmas Draw. Anyone who, with the winter months coming and wanting to take up a sport, please feel free to come along to one of the Friday Friendlies, or ring the club weekdays between 7.30pm - 10.00pm on 01993 842996 for further details on joining.

## Land's End to John O'Groats The Great Adventure

A trip by Wendy and Alan Eldret from Lew

### Why do you do some things in life?

#### What is the reason?

Well in relation to the above trip, we don't know the answer to those questions, but we do know that Land's End to John O'Groats was something we wanted to do. The idea came from a short holiday we took to Cornwall about four years ago; the first time we had been back to that area of the country since our honeymoon. The idea was shelved for a while, and then late last year we persuaded some friends to join us on the adventure.

We decided some while back that a tandem would be a nice way to do the trip, and that suited our friends. So the planning started. We bought our tandems early this year. We did a bit of training with a long ride every week, and made sure we had the right cycling gear for all eventualities.

We wanted to avoid as many busy roads, and see as much of the countryside as possible, so we planned the route on that basis with the help of some books.

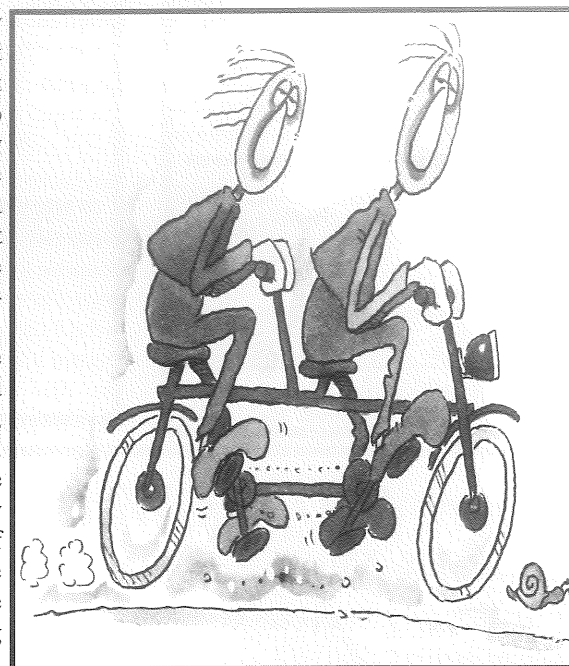
We wanted it to be "an adventure", so we had no hotels, Bed & Breakfast, or stopovers arranged.

We set the date to start, and off we went to "have some fun".

We carried all our clothes, spares, tools and various equipment in panniers on the tandems. It made the tandems quite heavy, but it was necessary as we didn't have any support vehicles and had to be reasonably self-sufficient. As we hadn't pre-booked any accommodation, and we didn't know what mileage we would complete each day; each day's events included the arranging of an appropriate bed for the night.

We had some bad weather, but were

generally lucky for most of the journey considering the time of year. We did have some problems with the tandems, which hindered our progress at times, but we overcame them, and kept going! We all kept reasonably fit and were able to manage the cycling without any major injuries.



And the result of all this?

This can only be a summary of what is a long story with lots of lovely and fun moments, but....

We completed the ride from Land's End to John O'Groats between 19th September and 10th October 2002. We took a long, scenic route, keeping to small roads, cycle and tow paths wherever practical. Slower, but more enjoyable. The distance we covered from "End to End" was 1127 miles, which means that we averaged over 50 miles for each of the 22 days. It doesn't seem a lot if you say it quick!

We saw so much of our countries and their scenic views, as we cycled along, and there was a tremendous variety of places where we stayed, or visited for meals, or just went to look at. We met lots of wonderful people, and we have so many great memories and pictures of an unusual but very

enjoyable holiday, and so many places we want to re-visit.

In addition to the store of wonderful memories, we have a lot of satisfaction from our achievement.

**WE THOUGHT IT.**

**WE DID IT.**

**WE LOVED IT.**

Before we started, many people asked us if we were going to raise money for a charity. We decided to nominate The Perthes Association, a children's charity ([www.perthes.org.uk](http://www.perthes.org.uk)). It is a small charity that has helped a young relative of ours and we believe it is doing some good work. We expect the money raised to grow to over £1,100 by the time it is all collected in. Through these pages, we would like to thank everyone who has contributed to this good cause, and of course you can always contact us if you would like to join the list of contributors.

Finally, the tandem is not for sale; we've got the bug, and intend to do some more long rides in the future.

### Watch Out They're About! The Bampton Mummers

The Bampton Mummers will be maintaining their Christmas tradition performing on Christmas Eve around the Village. Should you wish them to perform at your party please contact **Don Rouse Tel: 01993 851480** who will do his best to accommodate you at this very busy time. The important thing is to give your name in early so as to assist your time preference being considered. All those families with little children want the Mummers at the same time! With all the wonderful hospitality that the Mummers receive they often run late, so you can see it is a very difficult task to get it right.

The Mummers start performing at 5.00pm with the last performance at 11.30pm in one of the local Pubs.

The price of a performance is a Donation to the **SPAJERS** put in the **Mummers Box**, which will be passed around.. All the Mummers need is 'a room, a room to rhyme this Merry Christmas time' and, of course, room enough for a Knight in shining armour to die. Last year the Mummers raised over £700 for the **SPAJERS**.

## THE HORSESHOE INN

Bridge Street, Bampton  
01993 850201

*Your Hosts are Alan and Kath Clarke*

The Horseshoe public house was rebuilt in 1923/24 after the original pub burned down in 1923. This makes the Horseshoe the only purpose-built pub in Bampton!

Relax in our lounge bar in front of an open log fire with a pint of real ale or fine wine. Or, if you like pub games, then try our other bar with its a pool table, dart board, music and Sky TV. We also have a walled garden where, in the summer, you will see 'Aunt Sally' been played, and from April to the end of May, on Sunday evenings, we have Morris Dancing.

Come and join us - we know that you will make it a regular habit



# THE PITSTOP

## QUALITY PARTS, COMPONENTS & ACCESSORIES

THE COMPLETE MOTORING SERVICE  
ROLLING ROAD ENGINE TUNING  
STATE OF THE ART DIAGNOSTICS

CAR REPAIRS  
SERVICING  
MoT WORK  
BREAKDOWNS  
DISCOUNT CAR PARTS



ALSO HOUSING  
OXFORD CARB SERVICES  
Weber • Solex • Pierburg etc



**01993 850654**

Unit 1, Viscount Court, Station Road, Brize Norton

## Bampton Library

and

### Robert Vesey Room

Old Grammar School  
Church View  
Bampton

**01993 850076**

#### Opening Hours

##### Monday

2.30pm – 5pm  
6pm – 8pm

##### Tuesday

Closed

##### Wednesday

9.30am – 12.30pm

##### Thursday

2.30pm – 5pm

##### Friday

2.30pm – 5pm

##### Saturday

9.30am – 12.30pm

## The Robert & Doris Watts

### Residential & Nursing Home

30/32 Black Bourton Road  
Carterton,  
Oxfordshire OX18 3HA  
Tel: 01993 844923/843102



18 Single Rooms  
2 Double Rooms  
All With Modern Facilities  
Tastefully Decorated  
Nurse Call System

The Robert & Doris Watts Residential & Nursing Home is a family run home offering a high standard of nursing in a warm and homely atmosphere.

The fees represent excellent value for money.

#### Life Lease Purchase Also Available

In a new initiative, the concept of purchasing a lease-for-life is now being offered.

Such leases offer major benefits to clients of the home, and their estate.

Call us now for further information.

Or why not call in and see us? We will make you very welcome.

## THE COOKERY CORNER

By Gilly French

### Presents from the kitchen:

Idling through my books recently I have found a number of enticing recipes which I pass on partly as a way of encouraging myself to get prepared. I've always liked the idea of home-made food presents - many of my family and friends have most things they need already which makes present-buying a bit trying at times. But gifts from the kitchen certainly demand more time than I presently seem to have... Nevertheless they always seem to delight, and make a cheerful difference from pickled onions.

### Flavoured oils and vinegars:

These are actually quite easy. Decorative bottle and jars are always around in the shops in the autumn - all you need to do is to put the desired herbs or spices in the bottle and fill either with medium-quality olive oil or white wine vinegar. Oil suggestions include rosemary (everybody I know has a bush in their garden!), chilli (a few small dried ones are sufficient unless you are a masochist), bayleaf and pepper; vinegar suggestions include rosemary (Raymond Blanc suggests adding some orange peel as well), lemon, or tarragon. All you need to do is to ensure that the herbs/spices you choose are properly covered by the liquid.

Wash and dry the mushrooms, keeping them separate. Bring the vinegar to the boil with the peppercorns, coriander seeds, bay leaves, thyme and salt. Add the button mushrooms and cook at a fast simmer for 2 minutes. Remove the mushrooms to absorbent paper. Add the shiitake mushrooms and repeat. Leave all mushrooms to cool. Sterilise a 1-litre jar and add the mushrooms, alternately in layers if you wish (or just mix them up). Cover with olive oil to the brim of the jar and seal. They will keep for two months, provided the mushrooms are covered at all times so keep an eye on them and add more oil if necessary. The cooking liquor can be strained and re-used.

### Tipsy apricots:

This wonderful recipe was passed on to me by a friend, who says that it makes 'not quite enough for two 1lb Kilner jars':

1lb dried apricots

1/2 pint water  
8oz granulated sugar  
1/4 pint Amaretto di Saronno  
2 cinnamon sticks  
Place apricots in pan with sugar and water - heat gently until sugar dissolves. Put a lid on and simmer for about 15 minutes or until apricots have plumped up. Re-



### Shiitake and button mushrooms preserved in oil:

Another of Raymond Blanc's recipes:

500g shiitake mushrooms  
500g button mushrooms  
white wine vinegar to cover (about 500 ml)

1 tspn crushed white peppercorns  
1 tspn crushed coriander seeds  
2 bay leaves  
1 sprig thyme  
1 teaspoon salt  
extra-virgin oil as required

move with a slotted spoon and transfer to clean, warm Kilner jars. Boil the syrup in the pan for a minute to thicken it a bit. Pour over the apricots, add Amaretto and cinnamon stick, and seal tightly.

### Crème de Cassis:

I have to confess to never having tried this wonderful-sounding Jane Grigson recipe. It's usually something to do with opera clashing with the blackberry season - at least that's the excuse

I give myself... Mrs Grigson recommends making it in half quantities first time, and points out that it can be used as a good flavouring for sweet dishes, and to heighten meat stews and sauces as well as its more usual association with white wine and champagne!

2lb blackcurrants

1 litre reasonably good red wine  
about 3lb sugar

3/4 litre brandy, gin or vodka

Soak blackcurrants in wine for 48 hours. Liquidise the whole lot in a processor and pass through muslin or cloth, squeezing out all the liquid. Measure the liquid, put into a preserving pan and for each litre add 2lb sugar. Note the level. Stand over a low to moderate heat and stir until the sugar is dissolved. Regulate the heat so that the liquid keeps above blood heat (37°C, 96°F) but below simmering and boiling points (a thermometer is needed here) for 15 minutes. Check the temperature and give it a good stir. Repeat 2 or 3 times; then continue repeating the process at longer time intervals for about 2 hours, after which the level will have decreased slightly and the liquid will be slightly syrupy. Leave to cool. In a clean bowl, pour a mug of whatever spirit you are using followed by 3 mugs of blackcurrant syrup. Repeat until the syrup is all gone, adjusting quantities towards the end in the ratio 1:3. Pour through a funnel into bottles. It is ready in two days, but keeps well.

I fear that I am running out of inspiration for this slot in the 'Beam', and that it should be my last for a while. It's a shame, as I very much like doing it, but I don't do much cooking these days and so have to rack my brains harder each time. I doubt anybody would notice its demise, but if you think otherwise I would be open to persuasion.

*The Bampton Beam Team are very sorry to hear that you may be leaving us after so long. We would like to pass on our thanks, and I am sure fellow Bamptonians would like me to thank you from them as well for all your many contributions to the culinary tables around Bampton.*

*But please don't feel you have to go! Ed.*





## West Ox Arts

W.O.A. Gallery, Market Square,  
Bampton,  
Oxon OX18 2JH

Tel: 01993 850137 E-mail: westoxarts@yahoo.co.uk

Opening Hours: Tues - Sat 10:30am - 12:30pm and 2pm - 4pm; Sun - 2pm - 4pm  
Membership fees - Single £15, Family £25, Student £7.50.

### WOA Gallery Exhibitions

Sunday 3 November

Sunday 24 November

#### DRAWN TO LIGHT

PAINTINGS BY ANN MANLY & DENNIS HARRISON



The latest collection of watercolour paintings by these popular Bampton based artists featuring scenes of France, Italy, Greece, East Anglia, the Lake District and the Cotswolds.

Saturday 30 November

Sunday 15 December



Our annual Christmas exhibition is the perfect place to pick up unusual gifts for the festive season

A wealth of beautiful handmade items to tempt and delight, including cards, ceramics, textiles, jewellery, metalwork, and much more.

Tuesday 7 January

Sunday 2 February

#### FOREST

An exhibition of 28 contemporary photographers, each of whom has contributed an image of a tree fashioned according to their own approach or style. This Southern Arts Touring Exhibition will transform the Gallery space into a three-dimensional forest, albeit one which transcends geographical borders and seasons.

WOA in collaboration with West Oxfordshire District Council.

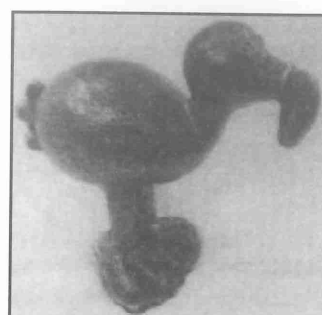
Sunday 9 February

Sunday 23 February

#### TAKE THREE ARTISTS

THREE ARTISTS PERSONAL RESPONSES TO THE NATURAL WORLD

Di Oldfield's and Kate Watkins' oil paintings are of landscapes, generated from visits abroad as well as this country. They also stem from a delight in the richness of the media. Wendy Fowler is a ceramicist who uses the quality of clay with her glazes to produce individual forms for home and garden.



#### FUTURE EXHIBITIONS IN THE GALLERY

2 March - 16 March Students from Abingdon & Witney College  
23 March - 6 April Ingrid Grubben - Paintings  
13 April - 27 April Stone, Fire, Paper, Water

#### Are you sitting comfortably?

We are always glad of new additions to the regular team of Gallery or Vesey Room sitters. It's a great way of seeing the exhibitions and of meeting people.

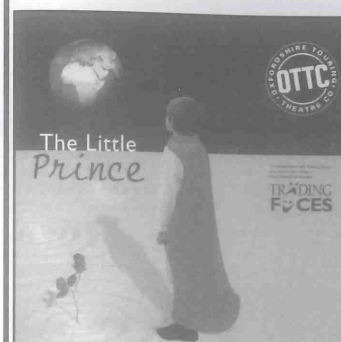
If you could spare a couple of hours a month to support WOA in this way, then please contact the Administrator (for the Gallery) on 01993 950137, or Barbara Daw (Vesey Room) on 01993 851491.

### THEATRE

OXFORDSHIRE TOURING THEATRE  
COMPANY

FRIDAY 21 FEBRUARY

## THE LITTLE PRINCE



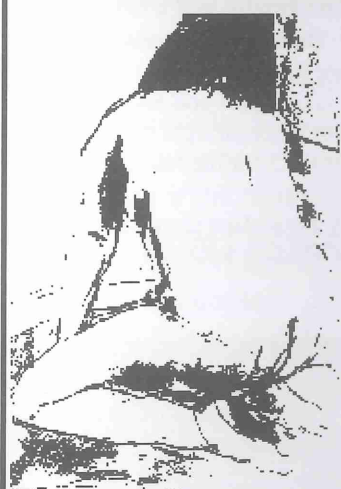
AN ADAPTATION OF  
ANTOINE DE SAINT-  
EXUPÉRY'S STRANGE  
AND WONDERFUL  
PARABLE.

Bampton Village Hall  
7pm

Licensed bar. Tickets £5.50, £4.00. Concessions (WOA members, Children, Students and Unwaged with ID), available from The Cotton Club, Bridge Street, Bampton, from 31 January.

A pilot crashes in the Sahara Desert and meets a little prince, a boy who tells stories of poetic and magical worlds, of his home planet and his fantastic journey to Earth... A classic fairy tale which will move, amuse and mesmerise audiences young and old using mask, music and song.

### Gallery Life Drawing Classes



Untutored sessions take place on Monday mornings, 10am - 12.30pm, and Wednesday evenings 7.30 - 9.30pm in the Gallery, and are aimed at those without need of guidance. No booking necessary. Pay as you attend.

WOA members £6.  
Non-members £7.50.

For more information, please call the Gallery.



## SUPPORT THE ARTS LOCALLY

Obtain the WOA Events Guide from the Gallery  
The Guide contains all the information you need on

Exhibitions Workshops Excursions Theatre Lectures

### WEST OXON DECORATIVE & FINE ARTS SOCIETY

Sat 23 Nov - Visit to the British Galleries at the Victoria & Albert Museum, London.

Sat 22 Feb - Visit to the Aztec exhibition at the Royal Academy of Arts, London.

Details from the Outings Secretary 01993 843414.

### LECTURES

#### 'Wychwood from a Different Perspective'

Ken Betteridge, Chairman of the Friends of Wychwood, presents a talk on the history of the Wychwood Forest. Using aerial photographs, Ken will give an overview of the history and landscape features of the ancient Royal hunting forest of Wychwood (which in Norman times extended as far as Bampton). The lecture will be followed by a special evening opening of FOREST, the exhibition in WOA Gallery.

Mon 13<sup>th</sup> January, Bampton Village Hall, 7pm. Admission FREE.

### FRAMING WORKSHOPS

Learn how to use W.O.A.'s under-pinner and save money on your next exhibition's framing costs.

The workshop sessions will be of three hours and numbers restricted to six so that each person should complete one frame.

Cost £10 plus materials.

To book a place contact Richard Morbey 01993 851004.

### Robert Vesey Room Bampton Library : Exhibitions

November December

#### DRAWINGS FROM LIFE

AN EXHIBITION OF WORK BY LOCAL ARTISTS

November December

#### THE WYCHWOOD PROJECT

AN EXHIBITION CELEBRATING FIVE YEARS OF THE PROJECT. The Wychwood Project aims to raise the awareness of, and appreciation for, the history and identity of the ancient royal hunting forest of Wychwood. The woodland theme continues with FOREST, the exhibition of tree photographs in the main WOA gallery

February

#### PUBS, SHOPS, AND TRADE

AN EXHIBITION PRESENTED BY BAMPION MUSEUM  
Opening Hours:

Mon & Thu 2.30 - 4.30pm Wed & Sat 10am - 12noon.

If you would like to book this exhibition space for a month please contact the Administrator at the Gallery or Ailsa Matheson on 01993 851004. The only charge is 20% commission on sales.



## Mask Theatre Workshop at Bampton

February Half term week - 17<sup>th</sup> to 20<sup>th</sup> 2003

Monday to Wednesday 10am - 4pm; Thursday 12noon - 7pm

TRADING  
FACES

Trading Faces, the mask theatre specialists, will be running a four-day mask theatre residency in Bampton during February half term. The project is open to young people aged 9-13 and priority will be given to young people who live in Bampton.

This is your chance to:

- Work with a professional theatre company
- Learn skills in creating a character and performing in masks
- Create a performance

The theme of the residency based on the story of Antoine de Saint-Exupery's classic tale *The Little Prince*. A pilot crash lands in the middle of the Sahara Desert where he meets the Little Prince, a boy on a quest from another world. The Little Prince tells some magical stories about his tiny home planet and the larger than life characters that he has met on his fantastic journey to earth.



This is a unique opportunity to spend four days working with a professional theatre company. **Trading Faces** specialise in mask and physical theatre and during this residency participants will have the chance to learn new skills and techniques as they work alongside company members to create your own piece of mask theatre.

The residency will culminate in a performance based on *The Little Prince* which will be performed in Bampton on the evening of Thursday 20<sup>th</sup> February. On Friday 21<sup>st</sup> February there will be a chance to see Trading Faces co-production of *The Little Prince* with Oxfordshire Touring Theatre Company. This performance is at Bampton Village Hall at 7.00.

Residency participants will have the chance to meet the cast after the performance with the show's director - Tony Davies from Trading Faces.

This project is supported by West Oxfordshire District Council.



"I thought the masks were really good. I never knew a play could be so funny without any speaking in it"  
Emma from Sheldon

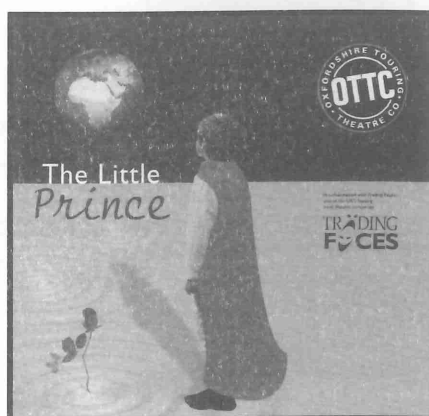
"I never realised I'd like working with masks so much. I came out smiling so much, I had had a brilliant Time"  
Chloe from Weymouth

"Wicked" Stevie Cain, Bicester

"The masks were cool and learning how to use them was fun, fun, fun!!"  
Katy Bateman, Wantage

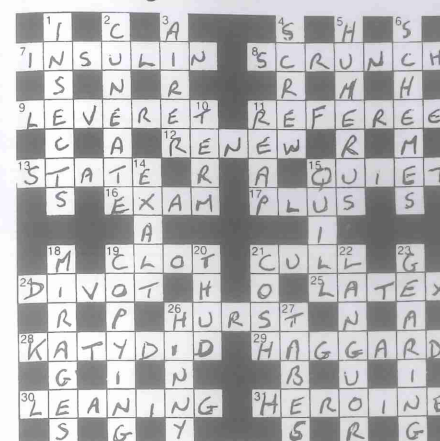
Places are limited so if you are interested in taking part you need to reserve your place straight away. The total cost is £3 for the four days!

To apply for a place please contact Thom at Trading Faces on 01235 550829.



## Solution to August's BEAM CROSSWORD

The £5 winner for August's crossword is Mr C J Clarke, of The Lanes. Congratulations!



We would also like to donate £5 to Cancer Research, as a thank you to Mr. Bill Govier for producing yet another crossword for us to enjoy.

## The Bampton Beam Adverts

Why not give your local business a lift?

### Advertise in 'The Beam'

(and get a free advert on the Bampton Website!)

The rates for 'The Beam' are very reasonable. So why not call the Editor now and book your spot for the next edition?

**Tel: 01993 851653**

Examples

Full Page £100

Half Page £50

1/3rd Page £30

1/6th Page £25

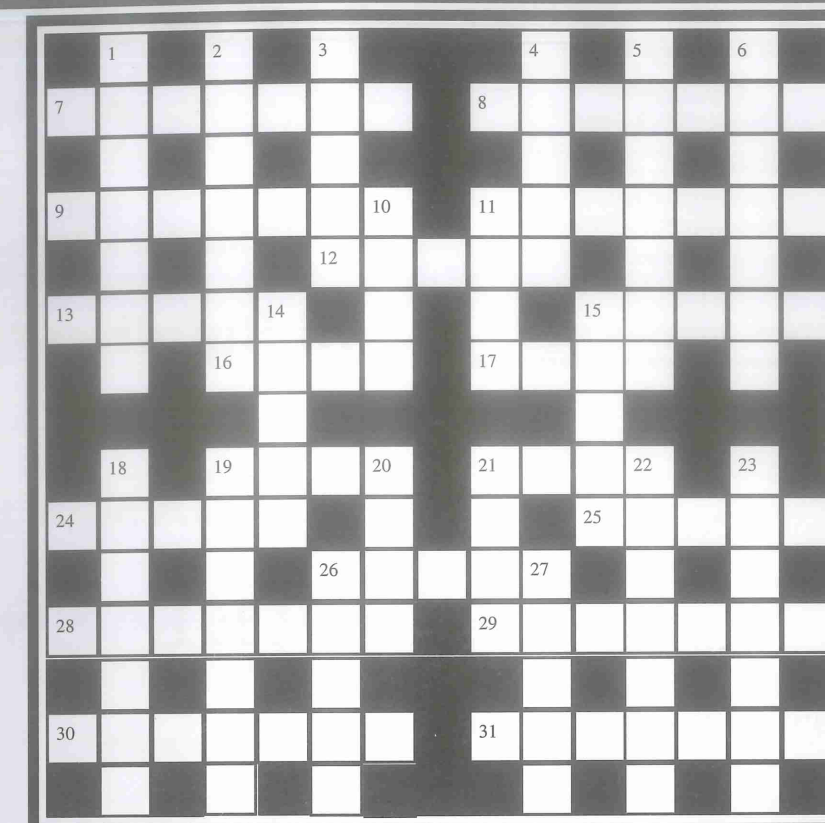
1/12th Page £16

Additional Artwork from £20

### Town Hall Bookings

For Town Hall bookings contact  
Mrs B. Sapsford Tel: 850776.  
Town Hall keys to be collected  
from Londis shop.

## THE BAMPTON BEAM'S CROSSWORD



### CLUES ACROSS

- Large earthenware jug
- Room where food is prepared
- Astral : Starry
- Shoe for indoors
- CollCollect together again
- Node
- Killed
- A gaelic language
- The cougar
- A sheet of floating ice
- A sibilant sound of disapproval
- Courteous : Polite
- Harbour : Refuge
- Lateral division of a church
- To differ in opinion
- Tuneful
- Attendant at a funeral
- Deputy ruling a colony

### CLUES DOWN

- An invented narrative
- Triangle with unequal sides and angles
- Coniferous tree with fragrant wood
- Female foal
- Shoulder-blade
- Pension or allowance
- Brassica napus, grown for oil
- Liquid refuse
- Dwarf Troglodyte
- Dash to pieces
- Non-metallic chemical element (Si)
- A cleft : Split
- Door or outlet
- Steering mechanism of a vessel
- A breed of dog
- Flesh of deer
- Rage : Fierce displeasure
- Strange : Weird



**DANETREE**  
**Veterinary Surgeons**  
 14 Coxwell Road  
 Faringdon  
 Oxon. SN7 7EZ  
**Tel: 01367 242777**  
 Surgery on  
 Thursday Mornings  
 (by appointment only)  
 at Bampton Library  
[www.danetreevets.com](http://www.danetreevets.com)



**N Nurden**  
**Motor Body Repairs**  
 1 Rosemary Lane  
 Bampton  
 Oxon OX18 2NF  
**Tel 07970 255594**  
 Free quotations  
 Insurance work undertaken

## =P&S Builders=

Unit 10, Northmoor Park  
 Church Road, Northmoor  
 Oxford OX29 5UH  
**Office: 01993 851700**  
**Mobiles: 07764 281289 or 07747 612826**

### All Building Aspects Covered

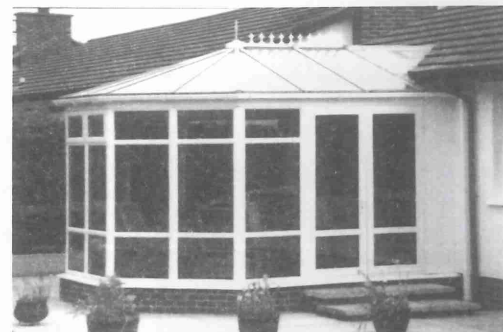
including

**Design and Build**  
**FREE ESTIMATES**



## Lynwood Leisure Buildings Ltd.

**Suppliers and Installers**  
 of  
**Conservatories, Windows, Doors**  
**Garden Buildings**



**Failed Glass doesn't mean new Windows**  
**Replacement Glass supplied and fitted**  
**Call us on 01993 842257**

## BAMPTON FAX BUREAU

Call in and send a fax message or  
 ask for details of special schemes

**Emmie's**  
**NEWSAGENTS**  
 Bridge St. Bampton  
 Tel: 850467  
*Newspapers delivered anywhere in  
 Bampton*

## SICK WASHING MACHINE POORLY COOKER?



THE  
 APPLIANCE DOCTOR  
 IS  
 "ON CALL"

TELEPHONE FOR  
 FREE ESTIMATE OR  
 ADVICE  
 WITNEY 705947



Evening and Weekend Calls at NO Extra Cost  
 Comprehensive Stock of Parts

## LIVE-IN HOME & PET MINDING SERVICE

Call Jacqueline & Merv  
**077 333 567 72**

for more information  
 Basic Rate: £10.00 per day  
 Extra Pets

Dogs - £1 per day extra per dog  
 Cats - 50p per day extra per cat  
 Many long-standing clients  
 References available

*Only a few dates left for 2003*

## LITTLE CHICKS CHILDMINDERS



Are you looking  
 for good quality  
 childcare?



Full or part-time?  
 Then give us a call  
**01993 210013**  
 Registered Childminders  
 First-Aid Trained

## PELLMANS

Solicitors  
 1 Abbey Street, Eynsham, Oxon OX29 4TB

- Business and Employment Law
- Divorce - Finances, Children & Cohabitation disputes
- Property - Residential and Commercial
- Wills, Probate and Trusts

**Tel: 01865 884400**

**Fax: 01865 884411**

Evening surgery at North Leigh by appointment

## Systems&Solutions

**Your Local Computer Shop**

**New Computers**

**Computer Repairs**



**Computer Components**

27 Fettiplace Road, Witney, Oxon, OX28 5AP  
 Phone: 01993 706161 Fax: 01993 703770  
[www.systems-and-solutions.co.uk](http://www.systems-and-solutions.co.uk)



**December**

- 7<sup>th</sup> Light of Love Tree Switch On, Sobell House, 3.30pm  
 13<sup>th</sup> Xmas Bazaar, FOBS, School  
 14<sup>th</sup> Coffee Morning, Gardening Club, Town Hall, 10 – 12noon  
 14<sup>th</sup> Concert, Bridewell Gardens Charity, Witney Methodist Church, 7.30pm  
 15<sup>th</sup> Outing to Turners 'Merry go Round', Gardening Club, Market Square, 9am  
 20<sup>th</sup> Carol Singing, FOBS, Village  
 20<sup>th</sup> C&W Dance, Cancer Research, Carterton Social Centre  
 21<sup>st</sup> Festive Concert, Bampton Classical Opera, 7.30pm, St Mary's Church  
 24<sup>th</sup> Mummers, SPAJERS, Around the Village Establishments

**January**

- 25<sup>th</sup> Burns' Night, West Oxon Conservative Association, Marlborough Hotel Witney  
 31<sup>st</sup> Barn Dance, FOBS, School

**February**

- 21<sup>st</sup> The Little Prince, Oxfordshire Touring Theatre Company, Village Hall, 7pm

**March**

- 9<sup>th</sup> Outing to 'Holiday on Ice' (Coventry), Gardening Club  
 12<sup>th</sup> Day at Cheltenham Races, Gardening Club

**For Christmas Church Services See Page 2**

**West Oxfordshire District Council Environmental Services  
 Holiday Refuse and Recycling Collection Timetable  
 Christmas and New Year**

Normal Day	Substitute Day
Wednesday 25 December	Friday 27 December
Thursday 26 December	Saturday 28 December
Friday 27 December	Monday 30 December
Monday 30 December	Tuesday 31 December
Tuesday 31 December	Thursday 2 January
Wednesday 1 January	Friday 3 January
Thursday 2 January	Saturday 4 January
Friday 3 January	Monday 6 January
Monday 6 January	Tuesday 7 January
Tuesday 7 January	Wednesday 8 January
Wednesday 8 January	Thursday 9 January
Thursday 9 January	Friday 10 January
Friday 10 January	Saturday 11 January

**Monday 13 January – Back to Normal**

**Bampton Websites**

Bampton's official Website can be found at [www.bamptonoxon.co.uk](http://www.bamptonoxon.co.uk). It contains a wealth of information on the Village, and is being accessed more and more by Web users all over the world.

There are also excellent 'unofficial' Websites around, for instance [www.ox18.com](http://www.ox18.com).

Anyone with non profit-making events around the area can advertise on these sites free. For the official Bampton Website contact [fredgray@witneyserve.net](mailto:fredgray@witneyserve.net) or on **01993 851653**, and for the other contact David Oakey at [dave@ox18.com](mailto:dave@ox18.com).

**THE BAMPTON BEAM**

*The Bampton Beam* is published three times a year and distributed free to all households and businesses in Bampton. Extra copies are available from the Post Office, Emmie's, Abbey Properties, Temples and The Library.

**Editor**

Fenella Gray Tel: 851653

**Sub-Editor**

Fred Gray Tel: 851653

**Artwork**

Jo Lewington Tel: 850947

**Treasurer**

Christine McLintock: Tel: 850736

**Advertising:**

Fred Gray: Tel: 851653/Fax: 851892

E-mail: [fredgray@witneyserve.net](mailto:fredgray@witneyserve.net)

**Photography**

Ian McLintock

Fred Gray

**Distribution**

Vacant

If you would like to help or join the team in any capacity please contact:

**Fenella Gray Tel: 851653**

Contributions are always welcome and should be sent to: **The Editor, The Bampton Beam, c/o The Cotton Club, Bridge Street, Bampton, OX18 2HA.**

**Next deadline - 28<sup>th</sup> February 2003**

While every effort is made to ensure the accuracy of information printed in *The Bampton Beam*, the editor and publishers cannot accept any responsibility for the consequences of any error that may occur.

The views expressed in *The Bampton Beam* are not necessarily those of the Editor. Personal views are the responsibility of the author in each case.

**The Beam Team wishes to thank**

**The Cotton Club - quality fabric suppliers** - as well as the 'Beam' letter box! Also thanks to **Abbey Properties**, and to the **Parish Council** for their financial support each year.

If you wish to have *The Bampton Beam* posted to yourself or a relative or friend on a regular basis, please send your name, address and cheque (made payable to The Bampton Beam) to: The Bampton Beam, Subscriptions, c/o The Cotton Club, Bridge Street, Bampton, Oxon OX18 2HA. Annual Subscription - £2.50