

The Bampton Beam

APRIL 1990

VOL. 5, NO. 1

Leaps for full Jars

On Spring Bank Holiday Monday, 28th May The Bampton Traditional Morris Dancers (Squire: Francis Shergold), The Traditional Bampton Morris Dancers (Squire: Arnold Woodley) and Bampton Morris Men (Squire: Alec Wixey) will be dancing in Bampton all day and in the evening will welcome several visiting sides as well.

Theories regarding the derivation of the word "Morris" are esoteric and conflicting. The two most probable explanations are either, that in some parts of the country the dancers blackened their faces, like Moors, or that the word is derived from "Mauresque", a Franco-Spanish dance, similar in many respects to traditional English dances, and representing a conflict between Moors and Christians.

Before dancing became an art form, however, it was part of the ritual of tribal custom and primitive religion and it would seem that when the Morris dancers leap in the air, a step they call the "caper", they are mirroring what the early Cretans did 3000 years before. A stone inscription of that period reads: "To us also, leap for full jars," (i.e. wine jars, following a good vintage) and to bring increase." Still, today, you will find a number of Bampton folk convinced that their gardens had become more fertile after the Morris dancers had been on Whit Monday, now the Spring Bank Holiday, and at least one Bamptonian became unexpectedly pregnant after sampling a piece of the traditional cake!

This is borne round by the "cake carrier" who collects money from the onlookers and wanders amongst them (for the Morris is essentially a spectacle rather than a social



dance), holding a be-ribboned sword on which is impaled a round tin containing a cake. Tiny pieces are cut with a small knife and given to onlookers in order to bring good luck - probably a relic of an ancient cereal sacrifice, and an alternative to animal slaughter.

Each side, for Bampton has three side, has a squire, an authoritative figure who is also the leader, and a fool. Terry Rouse, in the latter capacity, wears an old smock over white trousers with, on his head, an upturned rush wastepaper basket threaded with ribbons. He carries a short stick with a bladder attached to a string at the end which he uses to keep the crowds at bay while, in the interval between dances, cracking jokes to keep the onlookers amused. The performers dress in white trousers, shirts and waistcoats and black bowlers decorated with ribbons and flowers. Ribbons are tied above the cuff and elbow and every man has a pair of bell pads on his legs. The bells serve to emphasize dance rhythms as the white handkerchiefs, used in

the handkerchief dances, serve to emphasize hand movements and, so it was once claimed, to drive away evil spirits.

Also essential to the team is the musician. The traditional instruments, pipe and tabor, fell out of use when new recruits were unwilling to learn how to play them. However, with the latter-day growth in popularity of the Morris, due not least to Cecil Sharp's and, here in Bampton, William "Jingy" Wells' enthusiasm, the original instruments, thereafter replaced by the "squeaking fiddle", have, in turn, been replaced by the melodeon, the single merit of which is that it can be heard above the noise of traffic and crowds.

"Jingy" Wells, born in 1868, had been a great character and a fine fiddler - his first instrument having been home-made out of a rifle stock and corned beef tin. His family and the Tanner family can justly claim that they have been associated with the Morris for 200 years or more and, indeed,

continued on page 13

Fab Prefab

PREFABRICATION ANYONE?

Who now remembers the temporary houses put up at the end of the War for the hundreds of thousands of unfortunates who were bombed out? I happened to be closely involved with the scheme in 1945-46 and became a great believer in it. Officially called Portel Houses they became universally known as 'The Prefabs'; and were designed for a ten year life. Although it is not possible to design a house that will fall down suddenly after ten years, I was quite surprised, on travelling in to Waterloo by train last summer, to see a little row of them on a road going under the railway bridge.

I went round and had a closer look at them, each had its neat little countryfied front garden with flowers and bushes, quite a refreshing sight among the glass and concrete which infests that part of London. Seeing an old chap at the door of one of them, I asked him what it was like, living in a 43 year-old prefab. "Ideal," said he, "come in and have a look."

It transpired that he had moved in there in 1946 with his wife, now dead, and had lived there happily ever since. The place was in apple pie order and there were no signs of decay or deterioration of any kind, inside or out. He told me that there was a move to knock the houses down as the ground was now very valuable, "but they'll have an awful job to get me out of here". Quite an unsolicited testimonial.

Prefabs are not at all beautiful of course, nor do they harmonise well; on this account they were usually grouped separately. All pretty basic, no doubt, but I still wonder if a modern and redesigned version would not contribute to a solution of the housing problem for young people, and preferable to the present reported overcrowding. It would certainly take many months to design something suitable and to set up a production line, but then, the problem itself is not going to be solved in a year. T. CROWLEY (This is an excellent idea but sadly it does not overcome the prime problem which is the exorbitant cost of land. Ed.)

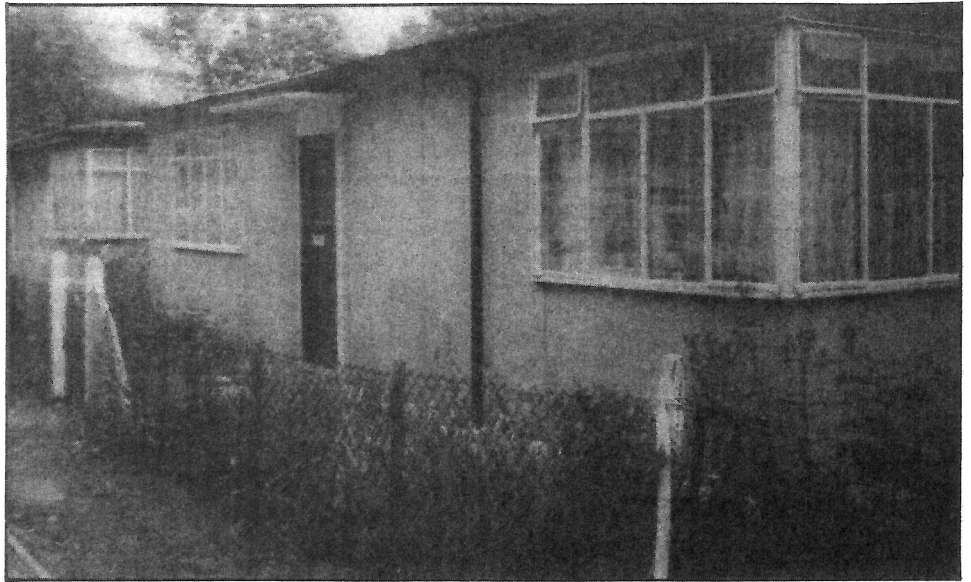


PHOTO: T. CROWLEY

Low cost housing — latest progress report

Please do not despair if you are a young person hoping to have your housing problem solved by the proposed low cost housing scheme and have heard little about it recently in the local press.

The Parish Council and the Oxford Citizens Housing Association are hoping to hear soon whether we have secured the grant requested from the general Housing Association Fund which is made available for low cost housing by the government.

We hope to be successful because the amount requested is relatively small in relation to other schemes and in relation to the total projected cost of the scheme. It was necessary to ask for this money in order to ensure the purchase of the surplus County Council land, and to provide the proportion of rented accommodation which is felt necessary for Bampton. Progress is being made, but unfortunately it is only slow progress at the moment.

Parish Council history and coming elections

The very first meeting of Bampton Parish Council was held in the Town Hall on 4.12.1894 under the Chairmanship of Admiral Blackburn, who lived at Weald Manor.

The Parish Council came into being as a result of the Local Government Act of 1894 brought in by a Liberal government under William Gladstone.

The effect of this act was effectively to transfer the civil functions of the older parish authorities to this new body. Prior to this act, the squire and parson, and sometimes the schoolmaster were the accepted leaders of the village. Their influence depended upon their traditional prestige, their superior education, and relative wealth.

Another result of the 1894 act was the exclusion of the church from formal participation in local government affairs, and the traditional functions of the parish which previously had always had a 'Christian' complexion. In effect, the parish would be administered by laymen.

The minutes of the first meeting of the Bampton Council are retained among parish records in the Town Hall, as are all the council minutes right up to the present day.

Further local government acts, notably 1953, 1958, 1963 and of course 1972 substantially altered the powers and responsibilities of the local council. Today Bampton Council can only advise or recommend to the District and County Authorities on subjects relating to planning, street lighting, upkeep of highways and other allied

continued on page 4

Village Hall To Let

Offers of Help

We need more help in running the Village Hall, by way of:-

- 1 Practical help with small maintenance and repair jobs
- 2 Annual covenanted donations - both small & large
- 3 New members for the Bampton 250 Club monthly prize draw
- 4 Committee Member nominations

Telephone Peter Dainty on 850540 or Susan Phillips on 850321 who would welcome your talents and any time you can spare.

Background

For those who are new to Bampton, in 1985 the Hall was in danger of being sold off as the burden of running it had become too much for the W.I. who own it and had run it since 1923. To prevent this a new Village Hall Charity was formed representing most clubs etc. in the village, which took the hall on a 35 year lease from the W.I. at £1 per annum and agreed to manage it for the benefit of the village as a whole.

Capital Costs

Since 1985 we have spent some £55000 on new heating, an extension including a bar, servery, new cloakrooms, a modernised kitchen and complete re-roofing. The cost has been met by grants, interest free loans, covenants & tax rebates from about 70 people in the village and special fund raising events. At the end of 1989 there was an overall deficit of about £300.

Running Costs

The Hall does not receive any contribution from the Parish Council towards the annual running costs (£3000/£3500) which are met from letting income (£2700/£3000) plus donations from the Bampton 250 Club. Currently, in addition to normal running expenses we need about £4000 for major redecorations, repairs and renewals.

Annual General Meeting

will be held in the Village Hall at 8.00pm on Monday 23rd April and is open to all residents of Bampton over the age of 18.



Lettings

In 1989 there were just under 200 lettings for:-

Plays	Barn Dances	Judo
Discos	Aunt Sally	Darts
Bazaars	Badminton	Bridge
Pantomime		Jumble Sales
Drama Rehearsals		Craft Fairs
Polling Station		Aerobics
Blood Transfusion Clinic		
Horticultural Shows		
Horse Race Evenings		
Wedding Receptions		
Private Parties, adults & children		
Regular meetings of Mothers' Union,		
Womens' Institute, and Wives Club		

There is scope for many other events and there has been some interest in forming Short Tennis and Indoor Bowls Clubs.

Hall Management

The day to day running to the hall is done by:-

Letting Officer/ Caretaker

Mrs J. Gascoigne,
21 New Road Tel: 850119

House Member/Secretary

Mrs S Phillips Tel: 850321

Treasurer Andrew Daw Tel: 851079

Chairman Peter Dainty Tel: 850540

The Committee meets as required, four or five times a year and the

Making the most of Village Halls

ORCC Village Voice

(from The Oxford Times, Nov.1989)

'Village halls are there to serve their local community by providing a venue for all kinds of activities: meetings of local organisations, fund raising events, village social occasions, ...local family celebrations.

...Often halls are less frequently booked up during the daytime. But in some cases there are also evenings free.

To help local village hall management committees to 'market' their halls, the Oxfordshire Rural Community Council has published a Directory of Village Halls in Oxfordshire.

The directory reminds potential hirers that village halls are in most cases managed by volunteers.

Many man-hours are devoted by the management committee without payment - and often without thanks - to making sure the hall is available for use.

Many committees operate on a very tight budget and have to run fund-raising events to fill the gap between income and expenditure. (Bampton has its 250 Club to serve this purpose, would you like to join? For £1 per month you have a chance to win £15, £25, £100 or once a year £250!!)

No-one should hire a village hall expecting a paid manager to be at their beck and call.

Bearing this in mind and the fact that more than 60 per cent of halls in Oxfordshire are more than 50 years old, the overall quality of the facilities and the service provided in the halls all over the county is remarkable.

For further details of the ORCC's Directory of Village Halls in Oxfordshire 1989 contact:

Meryl Smith, The Hadow Rooms,
101 Banbury Road, Oxford OX2 6NE
Tel: Oxford 512488.'

continued from page 2

matters. It does, however, retain direct control of the cemetery, the allotments, street markets, and the annual Street Fair. Despite its diminished power, it is a very useful and necessary forum for the discussion of local problems and for bringing them to the attention of the statutory body whose responsibility it is to take remedial action.

All local authorities are constituted in the same way, with councillors elected by their local government electorate and a chairman who must be one of them. In principle the period of office is four years.

An Election will be held on Thursday, 3rd May 1990 for the 11 Parish Councillors & 1 District Councillor (WODC) who will look after the interests of Bampton until 1994. Nominations had to be received by Tuesday, 3rd April.

**THE ANNUAL PARISH MEETING
WILL BE HELD IN THE TOWN HALL
ON WEDNESDAY, 18th APRIL 1990
AT 7.30pm**

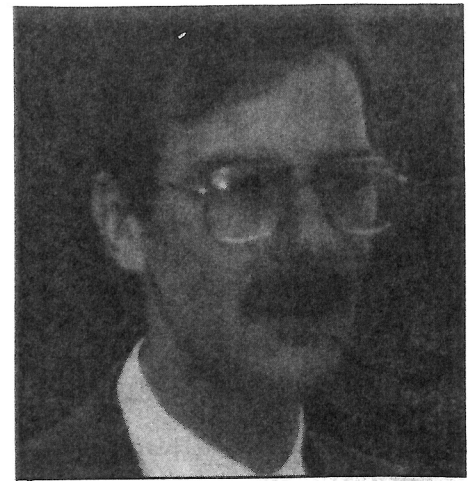
School notes

BAMPTON SCHOOL:

A welcoming message from Mr W. Ryde

For the last three months I have been the Headteacher at Bampton C.E. Primary School. It has been a period of great personal change, both at work and at home. A five year old girl has joined my existing family of wife and son. In her short life we will have been her tenth home! Imagine, there have been at least twenty people who have been willing and able to care for one little girl. It never ceases to amaze and delight me as to how caring people can be when given the opportunity.

The same is true at work. We are entrusted with the care of 121 children by their parents. Without the committed dedication of members of staff and the unselfish devotion of a large number of parents and other members of the community it



New headteacher, Mr. Ryde

would be an impossible task. The staff have taken on the demands of a National Curriculum in a very positive way, the Governors are freely giving time and deep thought to their new responsibilities, in particular Local Financial Management of Schools, and a whole variety of activities are organized by parents or participated in by them.

The school is in very good heart and viewing the future with bright optimism. Please feel free to visit the school and see for yourself!



Electric Vehicles Ltd

Moonraker Lane, Market Square, Bampton, Oxon OX8 2JH

THE ELECTRIC VEHICLE SPECIALISTS

- * Regular routine maintenance
- * 24-hour emergency breakdown service
- * Spare parts for most makes of vehicle from stock
- * Service exchange units (diffs, motors, steering boxes)
- * Replacement batteries and chargers
- * Body repairs and rebuilding facility
- * New and used vehicle sales department
- * Charger and battery service facility
- * Electronic control specialists

ALL AT COMPETITIVE PRICES

For details telephone WITNEY (0993) 850714/850025



(1418)

Why have planning permission

Dear Sir,

Is Planning Permission really necessary? We, who live in Weald, are about to find out.

Hillfield Farm, Weald consists of 6.17 acres of land on which a mobile home was erected some years ago subject to a licence review every year by the planning authority. In 1988 WODC refused to renew the licence despite representations from various residents in Weald and the owner had to sell it. The property was bought by Mr Ruben Reid to whom WODC gave planning consent. This was given as an exception to standard policy as Mr Reid is apparently a gypsy.

Approximately a year later the whole site was reportedly sold and now appears to be being developed commercially. Although it is proving difficult to locate exactly who owns the land, the original mobile home is now occupied by a Mr Summers who is apparently not a gypsy. Mr Summers has applied for retrospective planning permission to keep the mobile home where it is. Was Mr Summers aware when he moved in that the planning permission was personal to Mr Reid because of 'special status'?

A new road has been built from Weald Street to the top of the field behind the original mobile home. Topsoil has been removed and nine hardstandings made in the field. Water and sewerage have been connected. In February a mobile home and a caravan were moved into the field and are now positioned on two of the hardstandings - the original mobile home plus another small building (a washroom) are STILL in place. NO PLANNING APPLICATION has been made for any of the new development.

West Oxfordshire District Council has been kept informed of all the activities by many letters and telephone calls from the people of Weald and others. An enforcement officer has been to the site several times yet the work continues unabated.

It is understood that now an injunction has been made to stop further development. Will retrospective planning permission be

Letters TO THE EDITOR

granted for work already carried out? Does it not seem inconsistent and unfair that a previous owner should have been forced to sell because of lack of planning permission; yet new owners, with apparently no regard for planning laws, appear to be still staying there and developing the land commercially (possibly ending up with a housing estate?) and presumably relying on 'special status' to get them through?

Yours sincerely,

A Correspondent from Weald

(It is editorial policy not to publish anonymous letters but when the full name & address is given, a pseudonym may be used at the editor's discretion.)



Bampton in bloom

Bampton entered the Britain in Bloom competition last year for the first time and came 3rd in the Large Village Class. Some areas, shops and the public houses were commended for their fine displays of colour in baskets or window boxes. Other areas however were considered a little dull. We hope to improve on this for the 1990 competition and would welcome all offers of help for general planting schemes and for providing and for planting of troughs, baskets etc. which could be displayed around the village. Help with daily watering is essential as this can become an onerous task for one person, a pair of steps and a travelling watering can!

Bampton Exhibition Foundation

Dear Editor,

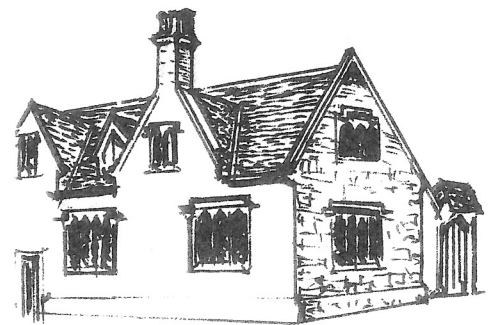
The Bampton Exhibition Foundation was set up in October 1906 to administer the funds of the Old Grammar School.

The body of Trustees consists of up to nine persons: The Vicar of Bampton proper, three appointed by Bampton Parish Council, two by Aston and Cote Parish Council, one by the Parish Meeting of Lew, and one by Oxfordshire County Council, and one co-opted member appointed by the other Trustees.

I wish to bring to your attention the second main function of the B.E.F., which exists:-

1. To maintain the Old Grammar School building, which is now rented by the County Council for use as a Public Library, and
2. To provide financial support to youngsters up to the age of 25 who reside in the Ancient Parish of Bampton, (i.e. Bampton, Aston, Lew and Weald) and who require money in order to make possible their participation in an academic or sporting course or activity of educational value, which would otherwise be beyond their means.

Anyone who feels that he or she qualifies for such assistance and would like further information should contact me. Tel: 850113
Yours sincerely, Roger Snow
40 Bushey Row, Bampton OX8 2JU



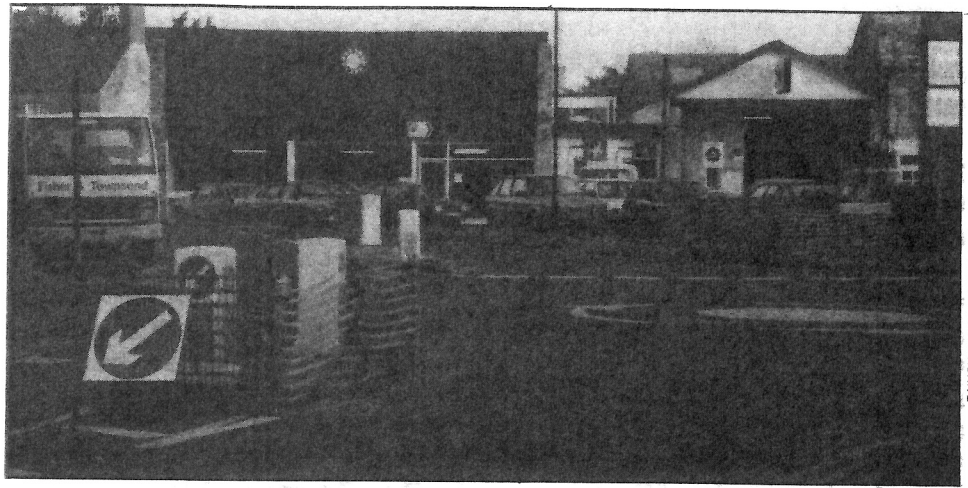
The Editor is delighted to receive letters at any time on subjects relating to life in Bampton and will make every effort to print them in the next edition of the Bampton Beam.

Village traffic problems

Dear Editor,

I read with some surprise and annoyance a letter from Mr Franks in the last issue of the Bampton Beam attacking the Parish Council for not pursuing an offer made by Mr. Douglas Hurd M.P. to take up highway matters, on its behalf, with the County Council. The general principle of Mr. Hurd's letter was taken completely out of context by Mr Franks, and I would like to take this opportunity to set one or two matters straight.

The Parish Council has a continuing dialogue with various officers of the County Council dealing with highway matters both directly and through the County Councillor. We report potholes in roads and pavements together with other highway problems at least once a month. I have met on several occasions with County Council officers in an attempt to promote road safety in the village. Suggestions put forward by the P.C. are not always agreed by the officers, but a number are, and have been carried out, subject to the financial restraints within which the County Council operates. The P. C.



prefers to deal directly with these authorities rather than expect others to fight its battles, because experience has taught us that the outcome is seldom improved!

The P.C. was unanimous in its desire to have a roundabout installed in the centre of Bampton in an attempt to slow down traffic, and to provide traffic islands for pedestrians to cross the roads safely in and around the shopping area. A zebra crossing was not feasible due to the proximity of road junctions and bends. Although one or two modifications would have been preferred by the P.C. it is, on the whole, pleased with the final outcome.

So please Mr Franks, do not criticise the Parish Council over highway matters when we are continuously striving to improve them!

Yours sincerely,

Mrs. J. Allinson

Chairman, Bampton Parish Council
P.S. I do live on a main road!

The mini-roundabout & islands have certainly made life easier for pedestrians, and for drivers turning right from Bridge Street but have done nothing to solve the most urgent problem of speeding traffic entering the village. Also, what is the point of roundabout warning signs visible only when you are already at the roundabout?! Ed.

The Case of the mini-roundabout

(with apologies to Conan Doyle!)

Sherlock Holmes leant back in his chair and placed the tips of his long fingers together under his chin, "Roundabouts," he murmured, "Interesting, obviously something to do with Bampton's August Fair."

I could scarcely suppress a smile, not only was the great detective off the scent he was positively clueless. "Actually it refers to Bampton's new motor vehicle roundabout." "Motor vehicles hold little fascination for me, Watson, dangerous contraptions." Holmes closed his eyes. "But you paid for the round-about." I continued doggedly. "I am sure I did not." said Holmes. "I would remember something like that," and he lowered The Times over his face. "But Holmes," I exclaimed, "If you haven't yet,

you soon will; the Poll Tax (sorry, Community Charge) comes into force in April. It also looks as if the County budgeted £8,166 for the work and it is now going to cost £10,600 or more as the final cost is not yet determined with the contractor!"

Holmes opened an eye, "Is this new tax causing more of a storm than the old window tax?" "Judging by conversations in The Jubilee, I rather think it is and so is the cost of the roundabout! Harry who used to work on Highways reckoned it had been a planning disaster and could easily end up costing double the original estimate. If the plans had been properly prepared before the work began and allowance made for farm vehicles and the like instead of leaving it to trial and error a lot of valuable time and



money could have been saved. I am not keen on my money being wasted in this way," I said. "No, nor am I," said Holmes, "I really must investigate what happens to the money I pay out in Poll Tax and make sure its put to better use!" 'Mr Holmes' would be grateful for the cooperation of Bampton poll tax payers, contact him through the Bampton Beam.

**CANCER RELIEF MACMILLAN FUND
BAMPTON, BUCKLAND & FARINGDON**

The Committee sincerely thanks all the people who have supported our efforts in 1989, in particular:

- * Margo & David Manning for the use of Portwell House Coffee Shop.
- * Volunteers who staffed the shop, sold raffle tickets, manned flag days at Tesco's.
- * Professional and Tradespeople of Faringdon for superb raffle prizes.
- * And all our Customers, Sponsors, Donors and Friends.

The Grand Christmas Draw raised £2056. The total raised with your help in 1989 was £9550. THANK YOU.

BAMPTON PUMPKIN CLUB

OFFICERS 1990

President:

Miss D. Thomson Tel: 850206

Vice-President:

Mr A. Woodley Tel: 850420

Chairman:

Mr M. Norman Tel: 851156

Vice-Chairman:

Mrs G. Wright Tel: 851305

Treasurer:

Mr J. Gascoigne Tel: 850119

Minutes Secretary:

Mrs C. Claxton Tel: 851428

Secretary: ???

Please, is there anyone who can help us fill this busy position?

We are also looking for people to help for an hour or two at the Street Fair, please contact one of the committee members above.

FORTHCOMING EVENTS

Easter Bonnet Competition

Saturday, 14th April 2.30pm.

Market Square, Bampton

4 Classes - Don't forget your pets!

Bampton Street Fair

Monday, 7th May - Entertainment all day - Childrens Entertainer - Dog Show - Schedules obtainable from:

Jenny Bromley [Judge] Tel: 843296

Jeanne Gascoigne Tel: 850119

or Headquarters.

Rosettes sponsored by -

R. Shayler & Son, Bldg. Cont.
and T. Parker, Solicitor.

BAMPTON CRICKET CLUB

1990 is our Centenary season. The Club was formed and the first recorded game played in 1890.

Since the re-formation of the Club in 1985 a search has been started to find out as much as possible about its previous history. If there are any ex-players or members who have information or mementos from days gone by, they are asked to contact -

The Chairman: John Lawrence,
23 Mercury Close Tel: 851141

The club seeks to provide an entertaining afternoon of cricket for players of all ages and skills. We need umpires and scorers so if you know about cricket but do not wish to play we would be very pleased to hear from you as well. We are also seeking the service of a tea lady or ladies. Anyone who could help out on a Sunday afternoon (not every Sunday) for a small remuneration is asked to contact the Chairman as above.

Special Events for Centenary Year

7th May - 6-a-side Tournament

July - Club Tour

5th August - Rematch vs Faringdon
and the Centenary Draw

Under-17 team will play in the Oxford Cricket Assoc. competition.

October - Centenary Dinner

S.P.A.J.E.Rs. (Society for the Preservation of Ancient Junketting)

THE ORIGINAL GREAT SHIRT RACE

Saturday, 26th May 1990

6.30pm Fancy Dress Parade

at The Jubilee, Market Square

7.15 Junior Race 7.30 Senior Race

SUMMER OUTING

Wednesday, 22nd August 1990

Destination & times to be arranged.

DONKEY DERBY & FETE

Monday, 27th August 1990

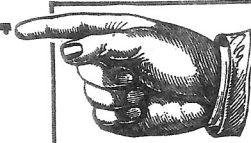
2.00pm at Sandfords Field

A NEW BAMPTON DIRECTORY will be published in JUNE 1990.

The Editor would be grateful for help with up-dating the information.

If you are interested or wish to advertise in it please contact:-

Susan Phillips Tel: 850321 or Billy Count Tel: 850085



Notice

Please submit items for envelope together

BAMPTON ENVIRONMENTAL WATCH GROUP

Membership is now 97. We are monitoring planning applications for comment to WODC and sitting in on the Lowlands Planning Sub-Committee and the Parish Council meetings. Prime concern at the moment is with the extension to Oathurst, the archaeological features of Folly House and the development WITHOUT permission of a caravan site in Weald (see Letters to the Editor). The first general meeting in January heard Brian Durham talk on Bampton's archaeological heritage including the recent findings at Folly House. Meetings are planned for 25th April, 25th July & 31st October at 8.00pm in the Village Hall and visitors are welcome for a £1 admission charge.

April 28th to May 7th is Civic Trust Environment Week. More information will be available nearer the time on posters and local media.

The Membership Secretary, Mrs Ann Norman Tel: 850832 will be glad to provide information and enrol interested people.

**WEST OXON CONSERVATIVE ASSOCIATION
BAMPTON BRANCH**

The AGM was held on the 22nd February and the Committee is:

President: Mrs M. Smith

Chairman: Commander O. Lascelles

Vice-Chairman: Mr J. Temple

Secretary: Mr T. Thompson

Treasurer: Mr M Davis

Membership Secretary:

Mrs E. Chambers Tel: 850392

Anyone interested in joining, or willing to serve on the Committee please contact Mrs Chambers.

Board



Advice Board page in a sealed envelope with pre-payment of £1.50.

BAMPTON DRAMA GROUP

'Local Dramatic Society
hit by Real Life Drama'

Bampton Drama Group's next venture, "Murder in Company" by Philip King & John Boland, has a special twist to it. Could this be true? Could it be us? To unravel the mystery make sure you are there to support your local company.

10th, 11th and 12th of May 1990
at 8.00pm in Bampton Village Hall.

Watch out for posters and
further information.

BAMPTON HORTICULTURAL SOCIETY

Please collect your 1990 Schedules from shops or pubs in Bampton and plan your exhibits for the first Show on Saturday, 11th August 1990. There will be an Open Meeting on 10th May in the Town Hall at 7.30pm with a talk on BONSAI. Bring along your queries for Question Time and enjoy tea & biscuits in between.

A Coffee Morning will be held, by kind permission of Mrs Bridget Smith, at Churchgate House on Tuesday, 1st May 10.30am - 12noon. Bring & Buy and Raffle.

If you are interested in joining the Society or coming on to the Committee, we will be more than pleased to welcome you.

MS SOCIETY, WEST OXFORDSHIRE BRANCH

Saturday, 7th April - Social event at Carterton Town Hall; there will be a Physiotherapist speaking and a good tea.

Thursday, 10th May at 7.30pm AGM at the Corn Exchange, Witney
Contact Jill Cooper Tel: 703068 for details of future events.

CLUBS and ORGANISATIONS in BAMPTON are invited to make use of the YEAR PLANNER which is displayed in THE POST OFFICE.

Enter your PLANNED EVENTS as soon as possible so that others can avoid double bookings.

BAMPTON YOUTH CENTRE

The Youth Centre is a fine well renovated Victorian building in Church View which offers special facilities for youth groups such as The Bampton Youth Club, The Bampton Scouts, Cubs and Brownies and The Children's Drama Group.

When not needed by them, it is available for hire (mainly during the day and at weekends). The building is licensed for 100 people and has the usual facilities and excellent parking. Would someone like to start a Country Dancing Group or classes in this or that? Enquiries to Mrs Banham Tel: 850019
Charges: £3 per hour; £15 per morning/afternoon; £20 per day or evening (Reduced rates for Youth Associations and higher charges for Commercial lets)

BAMPTON YOUTH CENTRE ANNUAL GENERAL MEETING will be held in the Middle Room of Bampton Town Hall on Wednesday, 11th April 1990 at 8 pm.

BAMPTON YOUTH CLUB

The Committee wishes to congratulate the Youth Leader, her helpers and members of the Club who held a highly successful Jumble Sale in February which raised over £200. It would like to thank the many kind people who made cakes and provided items for sale.

BAMPTON YOUTH CLUB ANNUAL GENERAL MEETING will take place in the Youth Club Room at The Youth Centre on Monday, 23rd April 1990, 7.45pm.

BAMPTON PRE-SCHOOL PLAYGROUP

PLAYWEEK '90 - Have you ever wondered what exactly does take place at a Playgroup? If so, then come along to any session in the week commencing 21st May, 9.30am to 3pm and see for yourself.

Lookout for Playgroup's Tombola Stall at Bampton Street Fair on May Day. Marvellous prizes to be won.

BAMPTON BRIDGE CLUB

Meetings are held on Tuesdays from 7.30 to 10.30pm in Bampton Village Hall. For further information contact:

Chairman: R. Franks Tel: 850209
Director: A. Peggie Tel: 842101
Secretary: B. Brookson Tel: 843668
Treasurer: I. Packer Tel: 851208
Committee: Mrs A. Craigen 850030
and Mrs J. Devas Tel: 851424

BAMPTON WOMEN'S INSTITUTE

Meetings are held in the Village Hall on the 1st Wednesday in each month at 7.30pm. Our programme for 1990 is displayed on the Notice-board outside the Village Hall. We have a wide variety of speakers and other interesting events. New members and visitors are always very welcome so why not join us. Charge for visitors 75p. Should you wish for further details please contact the Secretary,

Miss J. Rogers Tel: 850766

ROYAL BRITISH LEGION

Members will have seen that the noticeboard outside The Horse Shoe Inn, Bridge Street displays a list of the first Saturdays of each month of the current year, where a Branch representative (usually a Committee member) will attend for consultation between 11.30am & 12.30pm. He will be happy to receive suggestions and assist in any way possible, referring matters to the Committee where appropriate. Messages may be left with the management of The Horse Shoe who have kindly provided the above facility.

BAMPTON WIVES CLUB

Meetings are held in the Village Hall, unless otherwise stated, on the 3rd Wednesday of the month at 8.00pm. Annual subscription £3.50; Guests £1 per evening.

Future Programme

18th April - Talk on Citizens Advice Bureau
16th May - Visit to Clearwater Fish Farm
20th June - Mystery Tour

ART AND CRAFTS

Two Memorable WOAA exhibitions: "The Bampton Cluster", an exhibition of work by children of six local primary schools was a special delight and I left, as one should leave all good exhibitions, wanting more of the same - co-ordinators please note.

Some of the work was gleefully predictable, eleven representations of "My Mum", none the worse for that, but I was touched by the "Guide Dogs for the Blind" painting, I wanted to take the paper goose home, and I enjoyed tremendously the Victorian Christmas fabric and paper collage. The Derbyshire mosaic was well thought out and well executed, but top marks I gave equally to the superb floral collages of crushed egg shells, spaghetti whirls, lentils and dried peas and beans, coupled with that most ingenious and accurately observed tractor, composed of margarine boxes, loo and kitchen paper inners, an egg box and a biscuit box - a most ingenious piece of recycling!

"Interlocking Tracery", a somewhat cryptically entitled exhibition of lace, glass and metal work, gener-

Arts Page

Reviews

ously sponsored by Cotswold Conservatories and co-ordinated by Isabelle Spencer & Shirley Davies, was one of the most stimulating exhibitions of recent years. All the individual exhibitors were professionals and indigenous to the county.

Susanna Fuller & Geoffrey Fowler lent some beautiful antique lace and it was interesting to compare these pieces with modern exhibits from West Oxfordshire Lacemakers, less complex in design, and, presumably, less time-consuming to produce - doubtless, a reflection on today's priorities - but nevertheless very attractive.

John Poole showed some small domestic tableware on simple, modern lines, and Michael & Heather Ackland some most unusual and appealing jewellery. Stanley Dove exhibited a very fine bronze resin "Zeus" which conveyed great strength, but was singularly lacking in tension, and I liked very much his bronze on stone male and

female doves and recumbent females. I liked, too, Tom Neal's beautifully polished angular & timeless statues.

The Guild of Glass Engravers' work was very fine and, most notably, Gillian Cox's intaglio engraved goblets. Kim Thrower, too, exhibited some lovely pieces, but on looking at her selection of gold and enamel embellished milk bottle tumblers (engraved underneath "Property of County Dairies") it seemed to me that this was too clear an illustration of Emerson's dictum that "life too near paralyses art". Paul San Casciani's art deco glass was as seductive as ever. Alcedo

THE SLEEPING BEAUTY

"Pantomime these days is for the grown-ups, and the audience at Bampton Drama Group's production of THE SLEEPING BEAUTY in Bampton Village Hall was so grown up that I was afraid that I would be dragged up on to the stage, asked to sing a few notes, and sent home with a bag of sweeties.

A superficial concern for environmental issues could not mask the fact that this was a thoroughly traditional pantomime with all the classic ingredients. There were good fairies, and bad ones, beautiful princesses and principal boys, and a script which groaned under the weight of outrageous puns, some of which I hadn't heard before. Packets of smarties rained down on the audience, and the song sheets featured the latest smash hit - A BICYCLE MADE FOR TWO. There were so many thunderflashes and clouds of smoke that visibility dropped to twenty yards.

The scriptwriters themselves stole the acting honours. Trevor Milne-Day's King was strongly reminiscent of Stephen Fry, while David Gostling made the most of his role as Nosebag the bad fairy. The supporting cast of thousands was superbly kitted out in costumes that ranged from medieval to space-age, and the appreciative audience clearly felt that the show was a match for anything the big city might offer."

Andrew Walters
The Oxford Times

PANTO QUIZ WINNER 1990

Scott Anderson - aged 11 of Aston.

"Edith, what's going on upstairs in the Town Hall?"



West Oxfordshire Arts Association continues with exhibitions, concerts and other events during the summer months. Pick up a calendar showing 'what's on' at the Gallery - they are available in the library, Post Office, and at the Arts Centre in the Town Hall.

Photocopying is available for a small charge from Tuesday to Friday when the Gallery is open.

Come in and see.....



WEST OXFORDSHIRE QUILTERS

THE WEST OXFORDSHIRE QUILTERS

The group was started in 1983 by Ruth Cole (who has now moved to the Exmouth area) and Valerie Moon.

The main meeting is held on the 2nd Tuesday of each month in the Langdale Hall, Witney and has a varied programme - demonstrations, slide lectures and practical sewing evening. On the 4th Tuesday of the month we meet in the Langdale Hall, for sewing, chat and coffee.

During the year we also have some full day workshops, visits to exhibitions and other events of interest. Further information can be obtained from Florence Mac-Currach, Chairman Tel: 705683 or Christine Shrimpton, Programme Secretary Tel: 704501.

We have made 3 group quilts; the first was donated to Witney Hospital League of Friends and this raised £500. Our second quilt, called "What Next", was donated to Quilt Aid. The third was a Banner on calico, in quilting technique only. It depicts famous buildings in and around Witney and was presented to the Town Council to hang in the Council Chamber.

West Oxfordshire Quilters' Exhibition "Prints Charming"

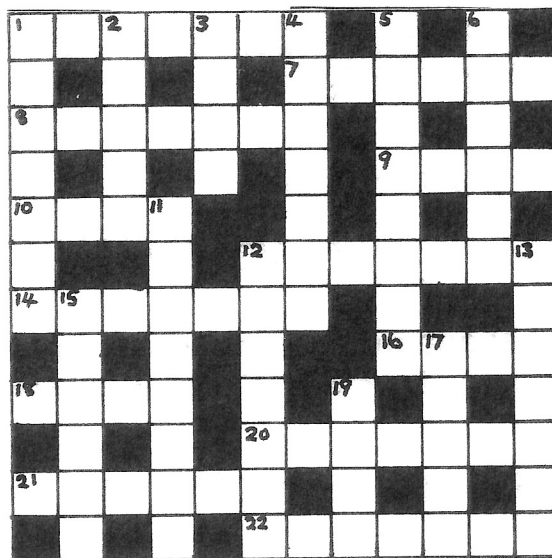
The Bampton Arts Centre,
The Town Hall, Bampton
Sunday, 17th June - 8th July
Tuesday - Saturday 10.30 - 1.00
and 2.30 - 5.00.
Sundays 2.30 - 4.30.

Admission Free.

Details from
Kari Rossie Tel: 850764

The Bampton Beam's Own Prize Crossword

£5 cash prize for the first correct
puzzle returned before 1st May, 1990



CLUES ACROSS

- 1 You are here!
- 7 OT prophet
- 8 Seepage
- 9 Felines
- 10 Attractive girl!
- 12 Like the holly at Christmas
- 14 Honours
- 16 Of old
- 18 Overtaken
- 20 Heathen
- 21 Die
- 22 Hair

CLUES DOWN

- 1 Proctor's assistant
- 2 Intends
- 3 Snare
- 4 Rattles
- 5 Go awry
- 6 With 1 Across, local telephone exchange
- 11 Privation
- 12 Keep it dark!
- 13 Garments
- 15 Goes away
- 17 Uncovers
- 19 Lazy

The solution will be published in the next issue; if you can't wait until then, send a sae with your entry to The Editor, The Bampton Beam, c/o The Cotton Club, Bampton.

R. COOPER

BUILDERS — PAINTERS — DECORATORS
CARPENTRY — JOINERY — GENERAL REPAIRS
SPECIALISTS IN DRY STONE WALLING

Phone:

CARTERTON 842444

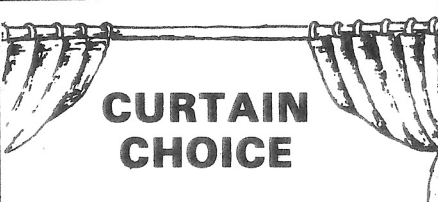
T THE TALBOT HOTEL RESTAURANT & BARS

MARKET SQUARE, BAMPTON IN THE BUSH
OXON OX8 2HA Tel: (0993) 850326

- OPEN ALL YEAR ROUND
- PATIO GARDENS AT REAR
- CHILDREN WELCOME

Accommodation available with private facilities, all rooms are centrally heated with Colour T.V., Tea and Coffee Making Facilities

A LA CARTE MENU and EXTENSIVE BAR SNACK MENU
or
JUST CALL IN FOR A QUIET DRINK



CURTAIN CHOICE

Made to Measure Curtains
Alterations and Accessories
Your Material or Samples Available
Fast Door to Door Service

ADVICE AND ESTIMATES FREE
CARTERTON 841368




The Cottage
Market Square
Bampton Oxon
Telephone 0993 851550

R. Boland & Sons
Barn Farm, Buckland Road, Bampton.
For all your locally grown

Fresh Fruit and vegetables

Free local delivery. Open every day including Sunday morning.

Telephone: 851481 or
851247 (Richard Boland)
850127 (Alec Boland)



ANDREW BOWMAN
MASTER THATCHER
HEDGEFIELDS FARM
BAMPTON
Telephone (0993) 850116

Member Oxon, Berks and Bucks
Master thatchers Association

- ☞ Homeopathic Remedies
- ☞ Photographic
- ☞ Health Foods
- ☞ Baby Care
- ☞ Medicines
- ☞ Cosmetics
- ☞ Toiletries
- ☞ Perfumes
- ☞ Gifts

BAMPTON FAX BUREAU

Call in and send a fax message or ask for details of special schemes

at

Emmie's

NEWSAGENTS

Bridge Street, Bampton Tel. 850467
Newspapers delivered anywhere in Bampton

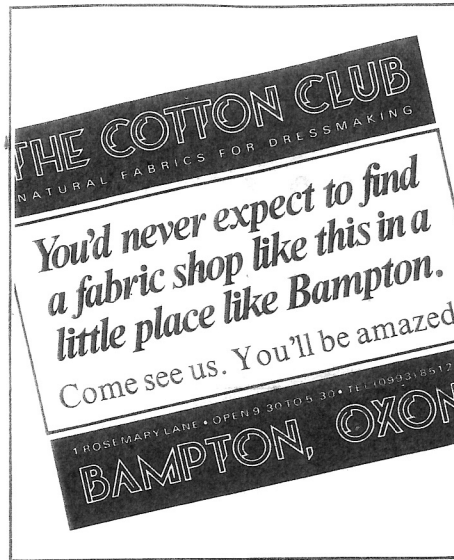
continued from page 1

Leaps for full Jars

Bampton has an unrivalled tradition in the Morris, Francis Shergold's side being the only side in the country to have had an apparently continuous existence.

Sadly, though, the Morris has had a somewhat chequered career. In the 16th & 17th centuries the well-educated and the well-off took what one suspects to have been a somewhat patronizing interest in it. In the 18th and early 19th centuries interest was confined solely to villagers and when an increasing number of agricultural labourers migrated to the towns, as a result of the Enclosure Acts, many teams disbanded. The Morris went into decline which was only halted when Cecil Sharp, fired with enthusiasm after seeing Morris dancers at Headington on Boxing Day 1899, researched and introduced the dances to the general public.

The essential Morris step, for those who wish to practise at home, is a combination of a kick and a hop; lift the foot as if to step



forward and then hop off the other foot swinging it forward while landing sharply on the ball of the first foot. But beware - once upon a time neophytes were required to "hang from a beam to stretch their knees" and were expected to practise several nights a week from Easter Sunday to Whit Sunday, being obliged to pay fourpence for the privilege. If late, they were fined a further fourpence and, if drunk, a shilling! **LOIS GRIBBLE**

Cotton Club under threat

COTTON CLUB NEWS

(Reprinted with permission from 'Stitchin' Times' Winter 1990)

Business Plans. Our landlord proposes a 75% increase in rent. No small business can be expected to absorb an increase in running cost of that magnitude, and we're no exception. This increase represents an increase of 91% since we opened four years ago. This calls for an examination of various survival strategies.

1) To stay in Bampton, in this shop, we must attract another 900 customers in the next year. Even if you bring a friend every time you come, 900 new faces seems a bit unrealistic.

2) We could move. If we have to pay rent similar to that in larger towns, perhaps that's where we should be - in a commercial area where 900 new customers a year seems possible.

3) Expansion. We could open up two new shops to share bulk purchases and help shoulder expenses. But we would need investment capital.

4) Does anyone have any other suggestions?

Address your correspondence to Brien O'Rourke, at the Cotton Club, 1, Rosemary Lane, Bampton, OX8 2JJ

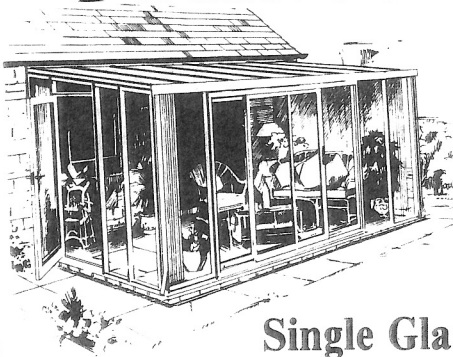
It would be sad for Bampton to lose such an exceptionally attractive, widely known and well respected shop through a totally unreasonable rent increase which comes at the same time as the new business rate. An independent commercial valuer has stated that the 1988 rent would be the fair rent NOW, with no increase. To take the matter to arbitration will cost the tenant a minimum of £700, a huge expense which presumably the landlord is counting on them to avoid. If there were a Bampton Shopkeepers' Union, a better stand could be made to combat a problem such as this. It is certainly not a good thing for Bampton or for the other retailers to have another depressingly empty shop window and lower morale! **Ed.**

A1 Leisure Conservatories

Tel: Carterton 844521

Locally based company giving realistic prices

Free site survey



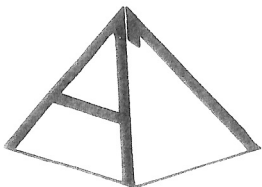
Single Glazed and Double Glazed

Blinds are available for all types of models, i.e. side, front, and roof

All Conservatory Prices Include Erection & VAT

Also Available:-

Carports and Double Glazing



VAT No. 490 9552 15

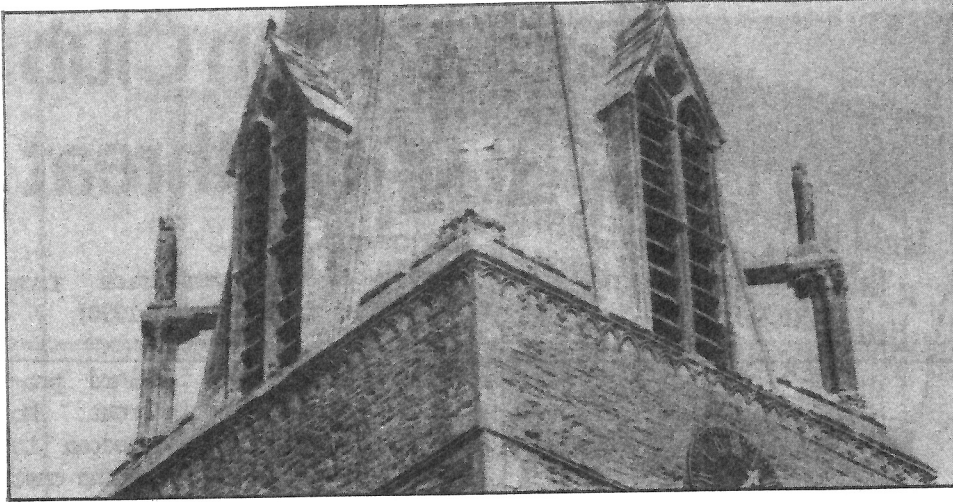


PHOTO: B. O'Rourke COURTESY THE BAMPTON BEAM ARCHIVE

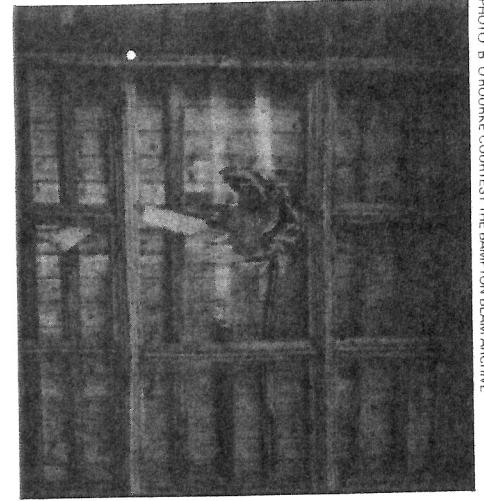


PHOTO: B. O'Rourke COURTESY THE BAMPTON BEAM ARCHIVE

Storm damage to Church

On the afternoon of 25th January gale force winds which caused such devastation across the country also did considerable damage to St

Mary's Church. One of the 13th century saints (St John the Baptist) at the base of the spire was blown down on to the roof. A large

stone from the pedestal went through the roof and damaged the organ. The quotation for its repair is £4554. The cost of the restoration of the Saint and the roof is not yet known but the Loss Adjustor has inspected the damage and it is hoped that the insurance will cover most of this.

Bampton's Saints

The statues round the spire of Bampton Church date from the 1370's and, although Pevsner claims that it is not possible to identify them, that over the SE corner can be recognised as St Peter by the keys he is carrying. The association of St Peter with Bampton dates back to the reign of Edward the Confessor when Leofric, on becoming Bishop of Exeter in 1048, gave to the see of Exeter the lands which he possessed in Bampton. St Peter is the patron saint of Exeter Cathedral. The connection between Exeter and Bampton continues to this day as the Bampton living is still partly in the gift of the Chapter of Exeter.

The statue over the NW is St Andrew clearly identified by the saltire cross on his shield. This commemorates St Andrew's Chapel at Beam Cottage which was possibly the site of an Anglo Saxon cemetery. A 7th century pin was identified on one of the Burials making this one of the earliest christian settlements in West Oxfordshire.

Over the NW corner is, or rather, was, the statue of St John the Baptist, identified by the lamb and flag on the roundel. A Papal Indulgence of 1292 refers to St John, as

the patron saint of Bampton church and this was probably its original dedication. By 1335 the Bishops Register refers to it as the church of St John the Baptist & St Beornwald. This reflected the growing popularity of Anglo-Saxon saints in the late medieval period.

By 1521 the vicar refers to himself as the Vicar of the Parochial church of St Beornwald Bampton. The statue over the NE corner is the only one that cannot be positively identified but it is not unreasonable to assume that it is St Beornwald, especially as it is over the chapel which contains his shrine.

Following the Reformation in the 16th century the practice of dedicating a church to a patron saint died out. By the time it was revived in the early 19th century many churches had no idea of their original dedications. Although St Mary was mentioned in connection with Bampton Church in 1310, Dr John Blair of Queen's College, Oxford believes the reference was to a chapel in the churchyard and not to the parish church. This reference may have been the only one the Victorians found and thus explains why the parish church of Bampton is now dedicated to St Mary the Virgin and not to St John the Baptist or St Beornwald its earlier patrons.

SARAH WEARNE

Church Services for Holy Week

ANGLICAN:	St. Mary's Church
Palm Sunday,	8th April:
10.30am	Parish Communion
Wednesday,	11th April:
10.30am	Holy Communion
Maundy Thursday,	12th April:
7.30pm	Holy Communion
Good Friday,	13th April:
10.30am	A Family Service
Easter Sunday	15th April:
10.30am	Parish Communion
3.00pm	Baptism
6pm	Parish Evensong, Shifford

ROMAN CATHOLIC: at St. Mary's
Palm Sunday, 8th April:
 9.00am Mass
Easter Sunday, 15th April:
 9.00am Mass
 For other Holy Week services at St. Joseph's, Carterton, please see notice board in porch.

METHODIST: Methodist Church
Easter Sunday, 15th April:
 No service at Bampton. There will be a United Service, 11am at Clanfield Methodist Church.

A. SIMMONDS

Market Square, Bampton Tel: 850204
The Old Fashioned Village Store

Traditionally Baked Bread & Cakes

Groceries, Confectionery, Toiletries

Whole Foods

Large Range of Pet Foods & Requisites

FREE LOCAL DELIVERIES

A. P. SYKES, B. F. SINSON & ASSOCIATES DENTAL SURGEONS

- ★ Comprehensive range of NHS treatment
- ★ Quotations for private treatment
- ★ Emergencies catered for.

50 BURFORD RD
CARTERTON
TEL 842534

THE OLD SLAUGHTER HOUSE
MOONRAKER LANE
BAMPTON
TEL 850095

HILL CLOSE
BURFORD
(PRIVATE ONLY)
TEL 2208

BAMPTON VIDEO CLUB

2 Bashey Row
BAMPTON
Tel 851096

YOUR FAMILY VIDEO

WE GIVE YOU THE BEST CHOICE IN THE AREA
WE HAVE OVER 2000 TITLES IN STOCK WITH
A LARGE SELECTION OF CHILDRENS FILMS
WE HAVE A VHS VIDEO CAMCORDER FOR HIRE
WE ACCEPT ADVANCE BOOKINGS FOR

FRI - SAT - SUN

OPENING HOURS

Mon - FRI	1230 - 9pm
SAT	1200 - 8pm
SUN	1200 - 6pm

PLEASE RETURN HIRED VIDEOS 2 HOURS PRIOR
TO SHOP CLOSURE THE NEXT DAY. THANK YOU

GREY GABLES GARAGE

CURBRIDGE, WITNEY, OXFORD OX8 7PD
TELEPHONE: WITNEY 702609

NEW SKODA DEALER

**New & Used Cars
of other makes available**

MOT and garage repairs

Ⓢ **SKODA - FIRST FOR VALUE**



**CATERING FOR ALL
OCCASIONS**

Arlene Moody: Tel: (0993) 850946

FAIR ACRES NURSERY

Buckland Road
Bampton

UNDER NEW MANAGEMENT

Business as Usual

Tues to Sat • 10 til 6

Tel: (0993) 850801

The Bampton Beam

EDITOR:

Susan Phillips Tel: 85032

SUB EDITOR:

B.P. O'Rourke Tel: 851105

ADVERTISING: Billy Count Tel: 850085

DISTRIBUTION: Kari Rossie Tel: 850764

With thanks to the contributing writers and Theresa Caddy.

THE BAMPTON BEAM is published three times a year and distributed free to all residents in Bampton. Extra copies are available at the Post Office and The Cotton Club.

Contributions are welcome at any time and should be sent to:-

The Editor, c/o The Cotton Club, Rosemary Lane, Bampton OX8 2JJ

The Editors would like to thank ORCC for a grant from The Rural Initiatives Fund made possible by a generous donation from Mr & Mrs J.A. Pye's Charitable Settlement.

Classified Ads

Required by S.P.A.J.E.Rs. (Dynamic yet Disciplined) perambulators to convey competitors in the Original Great Shirt Race (Saturday 26th May 1990) through Bampton from hostelry to hostelry in order that they may partake of alcoholic beverages and attempt to win this unique event. What's this about? ANY OLD PRAMS?!! Please contact:-

Don Rouse Tel: 850297

For Sale Quantity of cobble stones from renovated stable Tel:850321

WORLD CUP 90 PLAYER PIX

Two young football fanatics have duplicate stickers they are anxious to swap for ones they still need - red packs and blue packs. If anyone can help, please contact Susan Phillips Tel: 850321

Bampton Directory Corrections

Make these corrections to your Directory now. If you are in need of a new copy, ask for one at the Cotton Club or Post Office.

page 8 Royal British Legion

Secretary: J.F.G. Coles, 1 Eton Villas, Broad St., Tel: 850383

Treasurer: A.F. Mumford, 1 Castle Field, Bridge St., Tel: 850197

page 6 Bampton Pre-School Playgroup

For information & admission please contact: Mrs M Lismer Tel: 851119

page 6 Mother & Toddler Group

contact: Mrs C Deas Tel: 850423

page 9 Bampton Pumpkin Club

Chairman: Mr Max Norman
Tel: 851156

Vice-Chairman: Mrs Gwyneth Wright
Tel: 851305

Treasurer: Mr Jim Gascoigne
Tel: 850119

Secretary: ????(see Notice Board)

New entry The Bampton Branch of West Oxon Conservative Association

President: Mrs Molly Smith

Chairman: Commander O. Lascelles

Vice Chairman: Mr J. Temple

Secretary: Mr T. Thompson

Treasurer: Mr M. Davis

Memb. Secretary: Mrs E. Chambers

Revised Bampton Directory available June 1990; see Notice Board page.

THE ROMANY INN

17th Century Freehouse

BRIDGE STREET,
BAMPTON, OXON

Telephone: 0993 850 237

SEPARATE DINING ROOM

3 Course Sunday Lunch
£4.95

Tomato Soup or Melon Gondola
or Pate Maison

Roast Beef and Yorkshire Pudding
or Roast Chicken or
Trout Meuniere

Apple Pie & Cream or Pears & Cream
or Gateau or Ice Cream

3 Course Menu —
Monday to Thursday
£4.95

Florida Cocktail or Pate Maison
or Whitebait or Mushrooms & Cheese

Sirloin Steak 6oz or Plaice 6/7oz
or Braised Pork Chop 8oz
or Roast Chicken

Served with Potatoes & Vegetables of the Day

Homemade Apple Pie or Gateau,
or Pears & Cream or Cheese & Biscuits



FAMILY BEER GARDEN
play area for children including
Enchanted Tree, Mushroom, See Saw

Good Homemade Food at Sensible Prices

Bar Menu served 7 days a week
lunchtime and evenings

Homemade Dishes - Chilli Con Carne,
Beef Curry, Chicken Curry, Lasagne,
Shepherds Pie, Chicken & Mushroom Pie,
Steak & Mushroom Pie, Steak & Kidney Pie
plus Lambs Liver, Braised Pork Chops, Steaks,
Roast Chicken, Plaice, Haddock, Scampi,
Trout, Omelettes, Gammon Steak and more.

All served with a choice of potatoes
and a choice of fresh vegetables

A LA CARTE RESTAURANT
with a selection of 24 main courses
including vegetarian meals

PRIVATE FUNCTIONS
up to 30 people catered for

Accommodation - quality letting rooms
Double Room (2 persons) £23.00 per night
incl. VAT with full English breakfast

