

Gazette

opinion

Art showcase

VISITORS to The Gallery in Bampton will have seen plenty of talent on display these last few weeks — 100 pieces of art and craftwork on show in the autumn exhibition by members of the West Oxfordshire Arts Association.

They range from oil and watercolour paintings to sculptures and jewellery and virtually all have been produced by people who started out creating things as a part-time hobby.

Talent is a precious thing and it is nurtured by encouragement. The exhibition plays a vital part in giving a boost to people whose work might not otherwise get a public showing because of the commercial nature of private galleries.

It is a shame, however, that severely disabled people have been unable to visit the exhibition which finishes this Sunday. The Gallery is on the first floor of an old building, with the only access via a steep flight of stairs.

A lift needs to be put in and it will cost £30,000 or more. The Association is pinning its hopes on getting a slice of National Lottery funding.

This is precisely the sort of scheme which deserves support from the Lottery. We hope it is successful.

The Oxford Times

Friday, October 11, 1996

West Oxfordshire Arts Show: Bampton



The Autumn exhibition of members' work at the Town Hall, Bampton, usually produces a body of accomplished work, and this year's crop is up to standard. There is something for every taste. My wife, for example, was particularly enchanted by Pauline Payne's collection of silver and gold jewellery and bought two pairs of delicate flower earrings. Pauline Carter has a catholic collection of beautifully made waist coats and hats.

It was good to see old friends like Maureen Wilsker with her stoneware exhibits including a fascinating plaque, *Goose Girl*. Maureen explained to me that a lot of her ceramics are taken from myths – pre-Christian, Greek, Roman etc. I was also much taken with Isabella Spencer's embroidered *Gold Flower*. Helen Peacocke's photographs are particularly effective in giving us real texture in *A touch of avocado* and *Summer salad*.

Of the paintings, there is a full range in many mediums. *Interior* by Jean Elizabeth Jones and *Out walking* by Ariana Clarke Windle both have a wonderful air of mystery about them, while Philip Shewry's egg tempera alkyo glaze *Seated Nude* nicely contrasted with a pastel nude by Julia Jones.

A good eclectic exhibition with prices to suit all pockets and exhibits to suit all tastes.

John Dossett-Davies

The art of showing off local skills

OXFORD MAIL

THE Gallery at Bampton is currently holding one of its two annual exhibitions devoted to work produced by local artists.

The show, which runs until Sunday, October 20, features more than 100 items ranging from watercolours to bronzework, textiles and jewellery.

Everything has been produced by members of the West Oxfordshire Arts Association.



Vital showcase for the amateur artist

ARTISTS, even those who start out as a hobby with a sketch pad and charcoal and then become more serious by taking to oil on canvas, need to see their work go out on display.

Fortunately, in this part of the county even the most part-time painter, sculptor, fabric designer or jewellery maker, has the ideal outlet to show what he or she can do and to get a response from the public.

The place is The Gallery at Bampton, run by the West Oxfordshire Arts Association, which is holding one of its two annual exhibitions totally devoted to work produced by local artists.

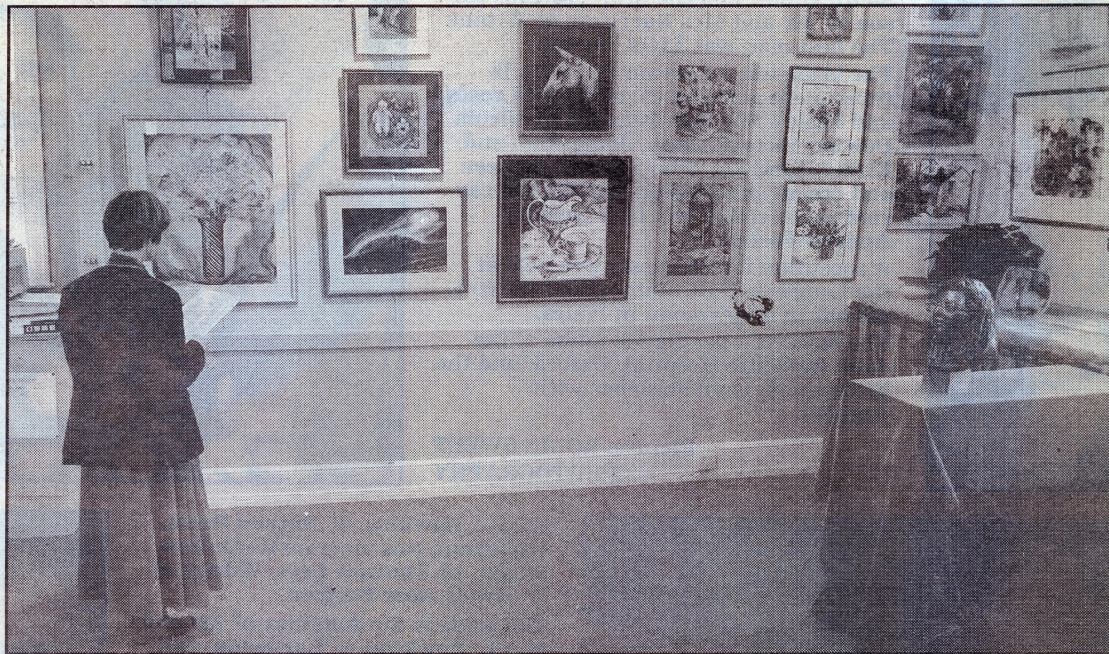
The autumn show, which finishes this Sunday, brings together more than 100 exhibits, ranging from watercolours of local scenes to a bronze of a Resting Goat and hats and waistcoats produced in coloured textiles.

There is also pottery and stained glass, a collection of silver and gold jewellery and

Everything has been produced by members of the West Oxfordshire Arts Association — current membership about 250 — and each able to display up to three pieces of their own work.

The Association's administrator Sally Proctor is naturally keen to promote what's on show. "The quality of the work is, I think, really quite staggering. There is a lot of talent in this area. People should come and see," she says.

The Gallery's role in giving these artists a showcase for their work



A visitor admires the exhibition at Bampton town hall

By **DAVID HORNE**

should not be underestimated, adds chairman Ernest Rosengard. "If we were not here these people would not be able to show their work, except at a commercial gallery.

"We do not select or turn away

children to get art into their bloodstream at an early age. There are also life classes held twice a week, frequent outings to exhibitions and, next spring, the association is holding its first painting competition, with a £500 first prize gained through sponsorship from Burford Garden Centre.

Although we are off the beaten track in Bampton we are a centre for the promising and the recreational artist," says Mr Rosengard.

The Gallery is, in fact, an all-the-year-round centre, providing regular exhibitions of professional work.

The association is keen through a series of workshops to encourage