

THE ARTISTS

Ann and Dennis are watercolour painters with their studio in Bampton, Oxfordshire, (Tel: 01993 850455). They travel extensively, painting directly from the subject wherever possible.

This exhibition had its initial inspiration last year in the Lot, Dordogne and Célé valleys in France. They were fired by the romantic scenery and the fascinating architecture of the buildings. Then followed a visit to Venice where, as usual, they discovered new corners in this romantic city. Their outdoor studio extends to Greece, the Lake District and East Anglia, as well as to local areas. Ann has also some flower pictures in the exhibition. About 90 works will be shown, mostly water colours with some mixed media paintings.

Their work is represented in many private collections throughout the world.

They have exhibited in mixed shows in London, including exhibitions at the Royal Watercolour Society, the Mall Galleries and the "Venice in Peril" Exhibition.



*Ann Manly
Old Baskets
(detail)
8x10"*

"FAR AWAY IS NEAR AT HAND IN IMAGES OF ELSEWHERE"

This quotation, from which the title of the exhibition is taken, was amongst graffiti seen from the train approaching Paddington Station for many years.

IMAGES *of* ELSEWHERE

new paintings by

ANN MANLY
DENNIS HARRISON

you are invited to the

PRIVATE VIEW
at

The Gallery, Town Hall, Bampton, Oxon
on Sunday 1st November 1998
11am to 1pm Wine

The Exhibition continues until 22nd November
Tuesday-Sunday 10.30am - 12.30pm and 2pm - 4pm
Closed Monday

WEST OXFORDSHIRE ARTS ASSOCIATION Tel: 01993 850137



*Dennis Harrison
At Monteil
Célé Valley
France
11x9"*



*Dennis Harrison
Dordogne Goose Girl
France
7 1/2 x 16"*

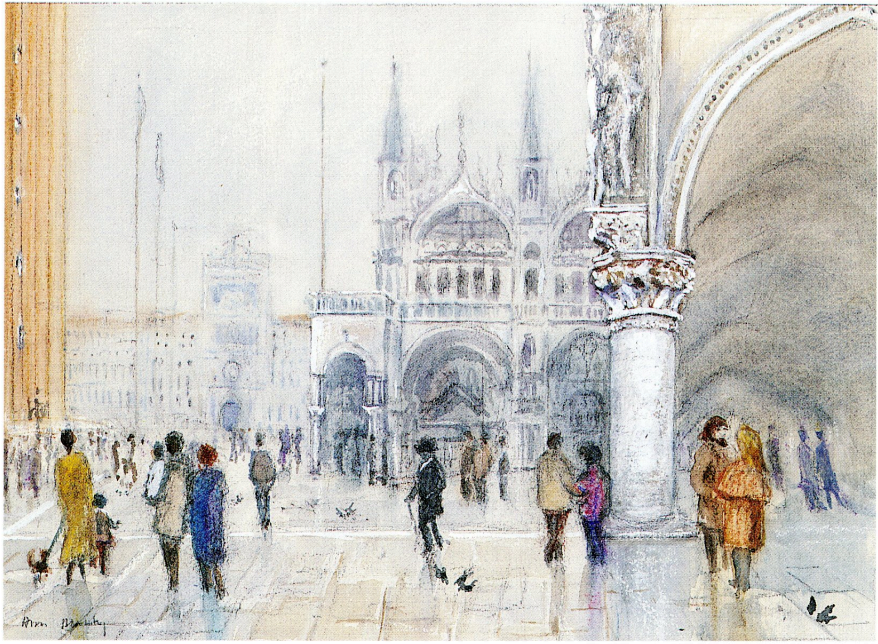
*Ann Manly
Rio Del Mancanton
Venice
14x19 1/2"*

IMAGES of ELSEWHERE



*Ann Manly
A Serious Game of Boule
Carjac, France
9 1/2 x 16 1/2"*





*Ann Manly
Misty Morning
Piazzetta
Venice
12x15½"*

*Dennis Harrison
Low Tide
Woodridge
Suffolk
11x15"*





*Ann Manly
At Gaillac
Lot Valley
France
15x14 1/2"*

*Dennis Harrison
The Pescheria Ferry
Grand Canal
Venice
11x17"*

