

# The Bampton Beam

APRIL 1992

VOL.6,NO.1

## A DECADE OF CHANGE IN BAMPTON

1982 BAMPTON 1985

### AN APPRAISAL

#### INTRODUCTION

"During 1982 it became apparent to the Parish Council that Bampton was on the verge of fundamental changes: a great deal of new speculative housing development was in the offing and at the same time many long established shops were closing. An increasing proportion of the community was "new" and the Parish Council felt that it could not speak for the community and represent its interest without greater knowledge of what that community actually thought of imminent changes and wanted from them. More or less development? More or less employment? To emphasise tourism and crafts or to go for growth and more industry? So with help from the Oxfordshire Rural Community Council, a study was instituted. A village meeting was called in October 1982 and it was proposed to carry out an appraisal of local attitudes.

This resulted in a questionnaire of some 240 questions on a wide range of local topics being drafted and then distributed to every resident in Bampton over the age of 11. Some 1200 questionnaires were returned: a response rate of approximately 65%. There was also a survey amongst the children at the Primary School.

This report is largely based on the results of that questionnaire, with information from other sources such as Council publications to balance the residents' views...

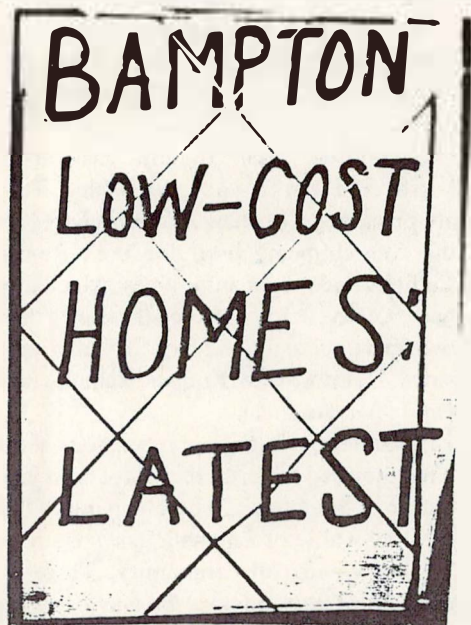
Where comment has been made the committee has endeavoured to be as objective as human nature permits. The hardest task has been to keep a balance between the silent majority and the vociferous minority: the enthusiastic few will always be viewed by some as keen and involved: by others as a meddling lunatic fringe.

One point which should be made is that despite the fears expressed in some of the replies, it was not the purpose of the questionnaire to pry, and it was never the pur-

pose of the committee to seek ways or means of changing the community. If anything, the reverse was true. The committee members took part because they were concerned about changes which were on the horizon and it was hoped the results of the questionnaire would give weight to the Parish Council in its representations with higher authorities."

\* \* \* \* \*

What changes for better or worse have been made in the past 10 years? Did the views expressed in the Village Appraisal have any influence on the local planners? Many of the old shops have closed but new ones have opened including the 'Supermarket' many people expressed a wish for in the survey. The population has grown enormously and many newcomers have put down roots contributing their energies and talents and becoming part of the community; others have come and gone anonymously. How will village life progress in the next decade? Should we have another appraisal to find out peoples opinions and hopes for the future?



Work has commenced!

The ceremonial laying of the foundation stone will take place on Friday, 24th April

For full story see the centre pages

LOW-COST HOUSING SUPPLEMENT

## On your marks, get set, GO!

Competitors for the annual Shirt Race line up for the start at Weald Corner in 1953. The 40th Original Great Shirt Race takes place on Saturday, 23rd May 1992 . . . turn to page 2



Photo: The Jubilee Inn



continued from Front Page

## THE 40TH ORIGINAL GREAT SHIRT RACE Saturday 23rd May 1992

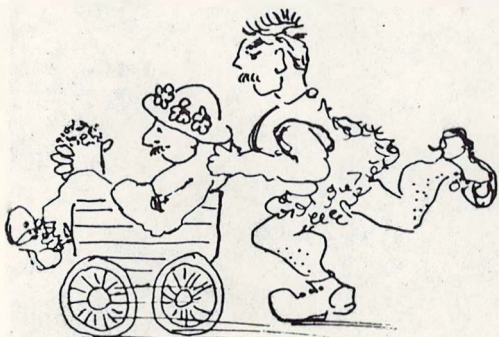
The first Shirt Race was organised as a one-off event to celebrate the Coronation of the Queen in June 1953, and nurses from the Oxford hospitals were invited to come over to Bampton with their collecting boxes, and make a collection during the race.

It was an 'adults only' race started from Weald corner by Ernie Shepherd firing a 12 bore shot gun. Competitors had to pay 10/- in advance of the day in order to enter, and this was then refunded to them on completion of the race. They had to drink half a pint of beer at each of the then 11 pubs in Bampton. A marshall was positioned at each pub to make sure that all the rules were adhered to, and the competitors were given a card (usually in the form of a beer mat) to prove that they had stopped there. The winners on that occasion were Harry Hampton and George Hunt, who also won in subsequent years. The SPAJERS did not exist then but once it did, took the Shirt Race under its wing, as that first occasion had proved so successful; and in its hey day, the adult race would attract 30 or more pairs of competitors.

Things have changed somewhat over the years and now there are races for Juniors (Primary School children) and Intermediates (Secondary School children). Bampton can no longer boast quite so many public houses - therefore, fewer 'stops' - but they kindly provide the drinks (non-alcoholic for the youngsters!) free of charge. The collection is made by members of the SPAJERS for the benefit of local pensioners. There is a Fancy Dress Parade with prizes for the best costumes in each section.

The SPAJERS hope there will be a record number of entries for all 3 classes of the 40th Race. Competitors are invited, for the first time, to seek sponsors although this is not a condition for entry.

**Sponsorship forms are available from:**  
**The Headmaster, Bampton Primary School**  
**& Alan Gaydon, 3 Broad Street, Bampton**



# The Deanery: Restoration &



Photo: D. Dudley

*One of the attractions of The Deanery for George, who is very keen on wildfowl, was the large pond & Shill Brook which border the garden. As well as peacocks, Snowy owls, pheasant & fish there are black swans - pictured above with 3 cygnets hatched in November.*

## A LOCAL PROFILE - INTERVIEW by Billy Count

I recently went to The Deanery to meet Deirdre and George Dudley, newcomers to Bampton, who bought the house in June 1990. "When we bought it, we didn't know if we were being wise or foolish" says George. The house needed extensive repair and renovation, so much so that they didn't actually move in until just before Christmas 1991. They first restored the cottage in the grounds and used that as a base whilst working on The Deanery itself.

The house needed repairs on the roof, re-wiring, new gutters and plumbing - a major project for most people but George and Deirdre went on to restore the house internally. The work has been a family enterprise with Deirdre's nephew helping as an expert in building work and her niece with interior design and decoration. As The Deanery is a grade II listed building advice and help has been given by Dr John Blair of Queen's College, Oxford and Mr Parkinson of West Oxfordshire District Council who deals with listed buildings. "The amount of help, and knowledge they passed on to us enabled us to restore rooms to their own period so, for example, the kitchen is a Victorian addition to the house while the cellars are medieval;" Deirdre explains. George showed me the cellars where John Blair had picked out previously blocked up arched windows. I was shown the fireplace that had been obscured by a rusting water tank; a bread oven was discovered and built back up to working

order, you can also see the curved indentation for heating cauldrons.

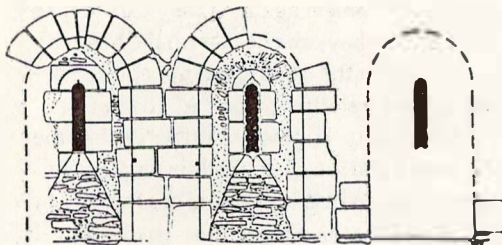
The cellar dates back to some time before 1069 when it was a chapel and was given to the Diocese of Exeter by Bishop Leofric and the Dudleys have a map dated 1317 which shows the big hall, where we sat in front of a flickering fire, and several large outbuildings and barns which have disappeared over the years. The Deanery remained the property of Exeter until the 1920's when it was bought by a Mr Douglas.

George runs an engineering business in Witney while Deirdre imports American motorhomes, like the amazing Winnebagos one occasionally sees. They live with their two children, Gina 16 and 'mad about horses' and Dan 13 who loves fishing. They are practicing Christians and especially love the Church being used for both Roman Catholic and Anglican services, which they hadn't come across before. It reflects their own marriage as a symbol of Christian unity since Deirdre is a Roman Catholic and George an Anglican.

Despite their initial apprehensions about what they had taken on they have been very happy in Bampton. "There's no place like it in the whole of England," says Deirdre, "it is a wonderful community. There's a great spirit here, look at the way everyone helped with the appeal to restore the organ. And the Village Hall, Town Hall and Youth Centre just add to the feeling of community." Deirdre adds, "We've been made very welcome, everyone has been so friendly." Good for Bampton!



# Exploration



The exceptional importance of the Deanery as an 11th and 12th century manor house was first realised in the mid 1980's. During the last year a total refurbishment by the new owners, Mr & Mrs Dudley, has revealed new features of interest and has made those that were already known more visible and comprehensible.

The earliest and most important part of the house is the south-western wing, which began as a two-storey range with three windows in its east end wall at basement level. These windows have now been unblocked and conserved, making it possible for the first time to examine them properly (see illustration). They are in an early Romanesque style unlikely to be later than about 1120 and perhaps built quite soon after the Norman Conquest. The room which they lit was probably the lower half of a two-storey 'double chapel', perhaps the building described as a 'chapel with a lower chamber' in a survey of 1317. This form of building is particularly associated with bishops' residences, and the chapel at the Deanery may

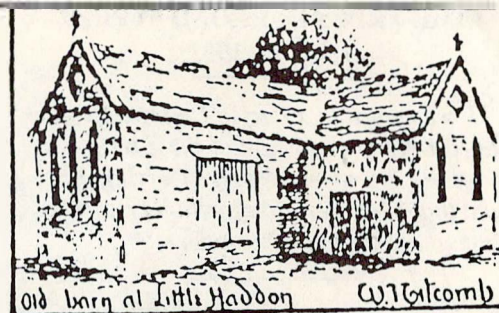
## RECENT DISCOVERIES by Dr John Blair

well have been built by Bishop Robert of Hereford, the tenant named in Domesday Book (1086).

Later in the twelfth century, a massive domestic range was added to the north-east corner of the chapel, blocking off one of the three windows. It now seems likely that the basement had a barrel-vault, removed in the post-medieval period to allow room for an extra storey. The west end of this range was rebuilt in about 1200; the recent alterations have revealed the remains of the original entrance doorway, as well as a big lancet window which the Dudleys have exposed and restored.

A recent exciting discovery made in February 1992 is a prehistoric ditch, probably the ring-ditch of a Bronze Age barrow, which encircles the Deanery. Further developments are expected. This follows the intriguing find of a large artificial water course, now mostly filled in but surviving in places as the Deanery fishponds, which ran parallel with the Shill Brook. It is far too wide to have been a mill-leat, and is faced on the west side with a stone-rubble revetment. Could this be an early medieval canal - perhaps for carrying Taynton stone to the Thames?

The Deanery is certainly one of the most important medieval houses in the South Midlands. It is indeed fortunate that it has found such sympathetic owners, who are ensuring that future generations will be able to appreciate it.

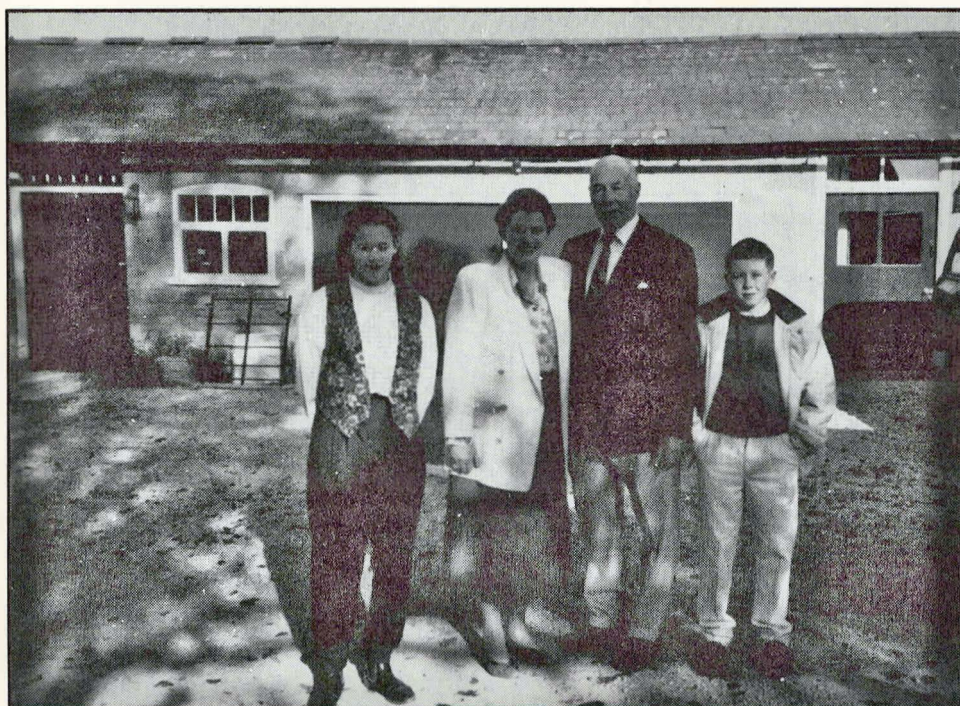


During research on Bampton and its hamlets for the Victoria History of Oxfordshire, the adjoining, very tantalizing illustration of a now-demolished barn at Lower Haddon has come to light. It appears in an obscure, anecdotal guide to the county called *A Ramble in Oxfordshire*, published in about 1926 by W.J. Monk, who in his commentary draws attention to its cruciform shape, the tall lancet windows and the crosses on the roofs, and suggests that it may have once been a church. Certainly, if taken at face value, it could well represent remains of an unknown 13th century chapel.

The building has been identified by a local inhabitant as the former 'Mill Barn', which stood about 360 yards south of Lower Haddon Farm near a copse where local children used to go primrosing. Unfortunately it seems to have been demolished around 1956 when the site was taken into Brize Norton airfield, and although some local people have confirmed its existence, no further illustrations have come to light; nor, most worryingly, does it appear on the early 19th century enclosure maps, which for Lower Haddon are the earliest wholly reliable ones to survive. Its appearance, on the other hand, hardly fits the otherwise obvious explanation that it was simply a field barn built in the early 19th century.

Does anyone remember the building, or, better still, know of any photographs or other illustrations? Although no documentary evidence has been found for a chapel here, there is now very clear evidence for pre-Reformation chapels at Lew and at Chimney as well as at Shifford, and the idea may not, therefore, be as bizarre as it at first seems. What does seem odd is that an abandoned (or rather re-used) medieval building could have lain only a few hundred yards from the road, unnoticed and unrecorded, into the 1950s, and any information would be very much appreciated.

**Kindly send any information to:**  
Dr Simon Townley,  
Victoria County History,  
Clarendon Building, Bodleian Library,  
Oxford OX1 3BG Tel: 0865 277238  
(who would also be very grateful to hear from anyone with interesting deeds or other documents in their possession).



Gina, Deirdre, George and Dan Dudley

Photo: D. Dudley



## LIME TREES IN BROAD STREET 1902 to 1992

*"It was noted in a Parish Council Minute dated December 1902 that these trees had been the gift of Mr George Gerring Jnr., and that each tree along with its retaining iron guard had cost 8/- apiece."*

27th January 1992

'Further to our recent public statement we wish to make it clear that it has never been the intention of the Parish Council to cut down the trees in Broad Street, but merely to inform and seek the opinions of local residents on all the options available. In their current state they considerably add to the beauty of Bampton providing an attractive entrance into the centre. However, the Parish Council feels that this shape can only be retained by the 70 year old tradition of pollarding (ie having the whole crown cut off leaving the tree to send out new branches from the top of the stem). From evidence given by the West Oxfordshire District Council planning representative the Parish Council believes that the WODC is unlikely to allow this treatment.

The Parish Council has only recently found that these trees are technically the responsibility of the County Council because they are situated on an 'A' class highway. We have therefore discussed this matter with the County Engineer and his representatives. Currently they are negotiating with the District Council. The Parish Council fervently hopes that it can persuade the District Council to allow continued pollarding as it has done in Burford. In the interests of Bampton and the residents of Broad Street the Parish Council wishes to support and fund this treatment of the trees in Broad Street. If the District Council cannot be persuaded to allow us to follow this tradition, alternative treatment will fall annually and will cost considerably more and be far less effective than five yearly pollarding. This may mean that the only option may be to give the trees to the care of the County Council. The County Council has stated that due to its limited budget it will not do any maintenance to the trees unless they are dangerous and threatening to the highway and its users.

We hope this makes the situation clear, but if you still have any queries please do not hesitate to contact Pauline Ruff or Ralph Norman.

### PARISH COUNCIL MINUTES 26.02.92

The Council will give the requisite 6 weeks notice of their intention to pollard some 8 lime trees on the western edge of Broad Street to the West Oxfordshire District Council.

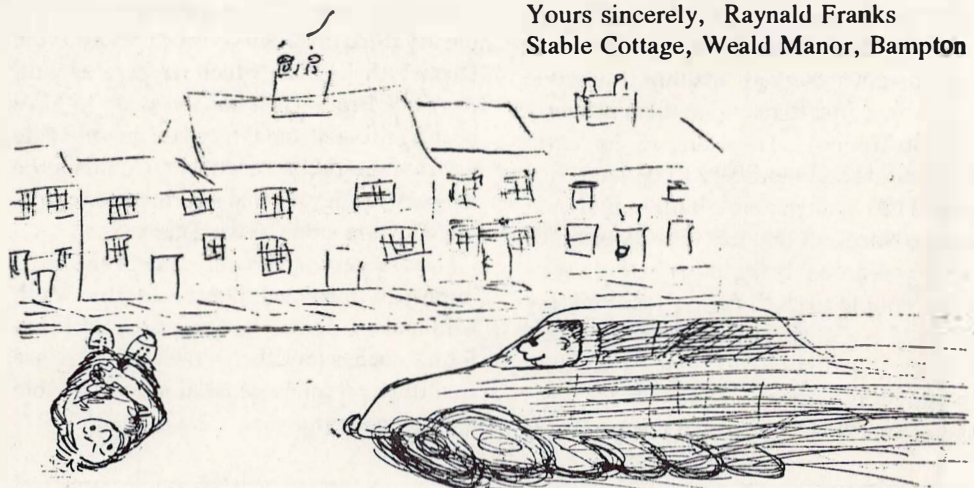
## PARISH COUNCIL NEWS

### SPEEDING TRAFFIC THROUGH BRIDGE STREET

Dear Madam, During the discussions a while ago regarding the possible installation of Sleeping Policemen in Bridge Street, I understand that the reason for not doing so was because it is an 'A' road. Surely, 'A' road or not, the speed limit for the village is 30 m.p.h. If the installation of this kind of restriction would restrict to 30 m.p.h. where does that put the excuse? We are of course being fobbed off with any old excuse. What is in fact being suggested is "The speed limit is 30 m.p.h. but we don't want to force you to keep to it".

Perhaps what is called for is a volunteer to be killed or seriously injured while crossing the road. May be, just may be, someone in authority would then start thinking about getting something done.

Yours faithfully, W.H.C. Mayhead  
Castle Field, Bampton



### EXERPT FROM A LETTER to the Clerk of Bampton Parish Council from Road Safety Manager of Oxfordshire County Council

"You asked for a costing of a traffic calming scheme (road humps) in New Road, possibly to be funded by non-County Council funds. It would be necessary to install 8 humps in order to treat the full length of the road, costing £15,000. However if lighting is also needed this may add £20,000 to that total. If the length of the scheme was reduced so costs would fall. ... I have also included Clanfield Road/Bridge Street for assessment for other traffic calming measures."

*As usual the "assessment" came to nothing because of lack of "bodies"! Ed.*

If you have views or ideas on traffic calming measures or the lime trees in Broad Street or any other matter affecting life in Bampton or wish to find out how the Parish Council deals with these matters, please come to:-

THE  
ANNUAL PARISH MEETING  
in the Town Hall at 8.00pm  
on Wednesday, 15th April 1992

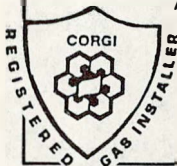
### PARISH COUNCIL MINUTES 26.02.92

The County Highways Authority are to prepare a scheme which would allow for a mini roundabout at the junction of New Road with Broad Street/Witney Road. Possible introduction of traffic calming measures in the Buckland Road, and removal of the 30 mph sign further out in Aston Road.



**McKenzie Brown**

DOMESTIC & COMMERCIAL  
HEATING - PLUMBING  
ELECTRICAL WORK  
INSTALLATIONS - ALTERATIONS  
ELECTRICAL WIRING - Lighting & Power  
OIL & GAS BOILER SERVICING  
RAYBURN  
AGA SPECIALIST (Aga trained)



TEL: BUCKLAND  
(0367 87) 283

**BAMPTON FAX BUREAU**

Call in and send a fax message or  
ask for details of special schemes

at

**Emmie's**

NEWSAGENTS

Bridge Street, Bampton Tel. 850467

Newspapers delivered anywhere in Bampton

**M. H. THOMAS**

Building  
Landscape Gardening  
and  
Fencing Contractor



ORNAMENTAL PONDS  
ROCKERIES LAWNS  
COMPLETE GARDEN LAYOUTS  
TREE POLLARDING  
PRIVACY, POST & RAIL  
CLOSE BOARDED FENCING

For Competitive Quotations Ring  
**BAMPTON CASTLE 850937**

1 Hill View, Lew  
Bampton, Oxon.

**SUPPLIERS OF**

CUT FLOWERS  
POT PLANTS  
HANGING BASKETS  
BEDDING PLANTS  
SHRUBS  
BOUQUETS, WREATHS,  
ETC.



ALSO AT

BAMPTON MARKET  
SATURDAY MORNINGS  
ORDERS TAKEN

**PLUMBING & HEATING**

Bathrooms,  
Showers,  
Kitchens,  
Guttering,

Central Heating,

Lead Work

**24** Hr  
EMERGENCY  
SERVICE



**No Job Too Small!**

**STEPHEN HAILES  
PLUMBING  
CARTERTON 840011**

Screen Printing

Tote Bags Banners

Badges Rosettes

Ribbons Etc

Hot Foil Printing

Business Cards

Souvenir Items

Keyrings Bookmarks

Pens Bookmatches

To Your Design

Telephone **851203**  
Bampton Castle

HOME  
MADE  
LABRADOR

**R. Boland & Sons**

Barn Farm, Buckland Road, Bampton.

For all your locally grown

**Fresh Fruit and  
vegetables**

*Free local delivery. Open every day  
including Sunday morning.*

Telephone: 851481 or  
851247 (Richard Boland)  
850127 (Alec Boland)

**J. Temple**

Hardware, DIY  
Fancy Goods & Toys  
Market Sq., Bampton, Oxford  
Telephone (0993) 850877

*"If you can't find it at Temple's,  
you can probably get by  
without it".*

**L Bampton L  
Driving School**

Dual Controls, Expert  
Tuition, Approved ADI  
Member MSA

Phone **0993 851344**



## THE BUSH CLUB: Plans for the future

Wednesday has a special significance for many housebound and retired people in Bampton as it is their day out at the Bush Club. The Club meets in the 'Horsa' building behind the Youth Centre in Church View. The 40 or so members are looked after by a team of volunteer helpers who drive them to and from the centre, provide refreshments, a cooked mid-day meal, entertainment and special care, if required. When the Bush Club reopened after the Christmas and New Year break everyone was delighted to find the dining room and kitchen had been redecorated and other repairs had been carried out. To most members and carers it is business as usual with a few improvements, but the Bush Centre Executive committee is aware of a significant change.

Up until the end of 1991 the Bush Centre had been renting the premises on Wednesdays only from the Oxfordshire County Scouts who had a lease (from the County Council) on the building and the small paddock to the north of the Old Primary School. When the Scouts lease came to an end it seemed likely that Bampton could have yet another commercial housing development.

### The Easter Story from a display for The Bush Club by Hilda Kent



Photo: Hilda Kent

It had previously been realised that the 'Horsa' building and land would provide an ideal site for a purpose built Community Care Centre combined with a single storey housing development for elderly people. Early in 1990 negotiations commenced with the County Council Social Services and Planning & Property Departments. At a Social Services Committee Meeting on Tuesday, 10th December (reported in the Oxford Times 13.12.91) it was revealed that serious consideration was being given to this scheme. Discussions have already been held with both the District Housing Department and a Housing Association. The Community Centre will include the Bush Club with, it is hoped, nursing, chiropody, physiotherapy and special bathing services available, as well as meals, laundry and home care.

The negotiations still have a long way to go - planning, both revenue and capital funding, building consents and so on will make it unlikely to materialize in less than three years - so what of the immediate future? The Bush Centre has taken over responsibility for the 'Horsa' building and has a licence from the County Council for the next three years. The Social Services Department has agreed to

### The Bush Centre Executive Committee

Mrs Colville (Chairman), Mr Allport, Mrs Argles, Mrs Cobley, Mrs Peeler, Miss Inkster, Mrs Foresheaw, Mrs Newing, Mr Gascoigne, Mrs Gould & Mr Fowler (County Councillor)

### Aston schoolchildren entertain members of The Bush Club



Photo: Hilda Kent

give an annual grant on a Service Agreement. The Bush Centre Executive Committee has been restructured to take on the financial problems and maintain a viable organisation.

When not needed by The Bush Club the present building is being used by West Oxfordshire College for Adult Education Classes, by local organisations for whist drives, aerobics, and by the West Oxfordshire County Scouts. The Committee will be seeking to maximise the letting potential to cover all the running costs.

### EASTER SERVICES ST MARY'S CHURCH, BAMPTON

**Palm Sunday 12th April**  
10.30am Parish Communion  
(Bishop Burrough)

**Maundy Thursday 16th April**  
7.30pm Holy Communion

**Good Friday 17th April**  
10.30am Morning Prayer & Litany

**Easter Day 19th April**  
9.00am Mass (Roman Catholic)  
10.30am Parish Communion  
3.00pm Baptism (at Clanfield)  
6.00pm Parish Evensong (at Aston)

### A NEW SUNDAY SCHOOL

will start after Easter run jointly by parishioners of St Mary's Church and the Methodist Church in Bampton on Sundays during term-time (3rd May to 5th July incl.) at The Vicarage, 5 Deanery Court, Broad Street from 10.30 to 11.30am

Any child over 3 years may join by coming to The Vicarage on Sunday morning - from 10.20am. Our aim is for the children to learn the basics of the Christian faith and doctrine in an enjoyable environment with active participation and discussion.

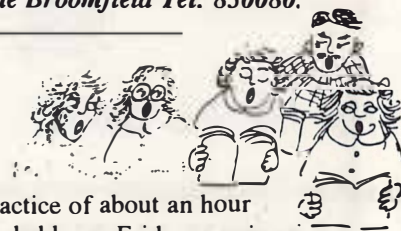
**For further information, please contact:**  
**Tricia Ball Tel: 851731 or**  
**Sue Broomfield Tel: 850080.**

### WANTED: SINGERS for ST. MARY'S CHURCH CHOIR

Last year the people of Bampton generously contributed towards the restoration costs of the historic Church organ and this has encouraged the Church Council to respond positively to several enquiries regarding membership of the Church Choir.

Bampton no longer has any organised group singing activity and, given sufficient support (sopranos, contraltos, tenors and basses are all required), Bampton's distin-

guished musician, Dr Bernard Rose, has agreed to assist with the reformation of an enlarged choir. Under his guidance and leadership it is hoped to achieve Church singing which will ensure that the restored organ is put to the best possible use and be worthy of our growing community. The commitment sought from members is to attend one service on Sunday at 10.30 am (approximately 1 hour) and initially, one



practice of about an hour probably on Friday evenings.

Cassocks/surplices will be provided. Those interested are asked to contact the Churchwardens: **Dr Alan Gaydon, 3 Broad Street Tel: 850882 or Mrs Judy Devas, 22 The Lanes Tel: 851424**



## Our Lady of Lourdes School

Dear Parents,

At this time of year, the Headmaster and Governors of the School are required to submit a balanced Budget to the Authority for the financial year which has just begun.

School Budgets are now based on a set amount per child (£1,347) attending the school. This has resulted in a reduction of some £ 29,000 in the amount of money available to Governors to provide for this year. Serious choices have had to be made.

At a meeting held this week, the Governors have approved a balanced budget which provides the best possible service within the allocation. Regretfully, there are several notable changes.

The number of teaching staff has had to be reduced by one from September.

Despite this reduction, there will continue to be seven classes in academic year beginning in September.

We will not be able to fully provide, as we have in the past year, for four year old children who are not yet entitled to full time education. We will be offering those four year olds two mornings a week in the autumn term, four mornings in the spring term and full time education in the summer term.

This continues to be better than any other school in the area offers and can only be achieved because our permanent staff have offered even greater commitment.

There are other changes, though less important.

It is clear from all this that if we are properly to provide a high standard of education for our children, it is imperative that we continue to support our school and above all to encourage all our Catholic parents to send their children to our school.

As usual there will be an open meeting of Governors and Parents in the Summer term where all will be welcome to express their views on this and other matters affecting the school. The date of that will be announced nearer the time.

*Michael Meredith*

Headmaster.

Date. 8<sup>th</sup>, April, 1992



# The Garden Column: *Comments & Contributions Welcome*



Time to think about the vegetable patch - the onion sets and seeds are in the shop (up to 99p a packet instead of the 4d they used be!).

I am trying to cut down the work this Spring by not planting until late April. Last year, planting in March, my beautiful green rows were nipped by late frosts, inspite of my emptying the contents of the airing cupboard and covering the whole patch with sheets when I heard the frost forecast. Two exceptions - broad beans, which will survive frosts and garlic which needs a long season. I've had a row of cloches up over black plastic bags to warm the soil and I've planted garlic cloves straight from SPAR, 2 inches deep and 6 inches apart - I should get a 12 fold yield. I'm not going to bother with greens as last year they provided a feast for cabbage white butterfly caterpillars and later for a thick sludge of grey aphids. I'm still nurturing brussell sprouts which are only as big as peas. But I'll plant twice the number of onion sets which did really well. I've got one string left and I'm still eating parsnips straight from the garden and leeks - both

wonderful for soup and other dishes. Turnips were a waste of time last year - mine rotted before I could eat them - but I'll grow beetroot again. Those you can't eat freeze well for soups and the tops can be eaten like spinach. I've now got a row of perpetual spinach which I've been able to pick throughout winter so I won't bother with the annual variety. And I am going to grow a cut-and-come-again lettuce called Lollo Rossa which will save me having to think about consecutive planting.

I'm trying an alternative tomato plant this year - called SWEET, it's a tiny cherry tomato which will not only do all right out doors but I'm told it looks so pretty it will save planting sweet peas. They'll grow against my shed - sunniest place in the garden. I found courgettes can make a delicious salad so I'm not bothering with cucumbers and I'll stick a marrow plant into my compost heap. Last year it did wonderfully with no attention. Earlier I used my compost heap as a "hot bed" - piled it with horse manure and placed a wooden box on top with a piece of bubble wrap over it. It made a good alternative to a green house for starting seeds and

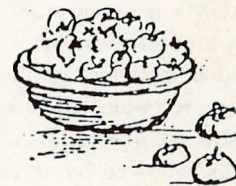
nurturing young plants and the manure improved the compost heap ready for the marrow plant.

You don't have a compost heap?  
Well, shame on you!!



## PARSNIP SOUP

Scrape and cut up 2 parsnips. Cover with water, bring to the boil and simmer for 20 minutes. Liquidize together with cooking water. Chop 1 medium onion and lightly fry in a small amount of butter or olive oil and add to liquidized parsnips with a stock cube, 1/2 tsp cumin seeds and 1/2 tsp curry powder. Serve with spoonful of yoghurt or sour cream and a little chopped parsley.



## Electric Vehicles Ltd

Moonraker Lane, Market Square, Bampton, Oxon OX8 2JH

### THE ELECTRIC VEHICLE SPECIALISTS

- \* Regular routine maintenance
- \* 24-hour emergency breakdown service
- \* Spare parts for most makes of vehicle from stock
- \* Service exchange units (diffs, motors, steering boxes)
- \* Replacement batteries and chargers
- \* Body repairs and rebuilding facility
- \* New and used vehicle sales department
- \* Charger and battery service facility
- \* Electronic control specialists

**ALL AT COMPETITIVE PRICES**

For details telephone WITNEY (0993) 850714/850025



MEMBER  
(1418)





# Notice

Please submit items for the Notice together with a

## BAMPTON VILLAGE HALL

The Management Committee will complete the major restoration of the hall when replacement windows are fitted in the summer. The work will be a lasting memorial to Frances Cole whose friends and colleagues contributed so generously at the time of her death. Further redecoration was carried out in January and lightweight tables have replaced some of the old heavy boards and trestles. Lettings income and 250 Club proceeds sadly do not cover the upkeep and running costs. However, thanks to the generous covenanted donations which many people still pay, the hall was solvent in 1991. If you feel you could help in any way, please come to

**THE ANNUAL GENERAL MEETING**  
in The Village Hall  
on Wednesday, 29th April at 7.30pm

## BAMPTON ENVIRONMENTAL WATCH GROUP

The 2nd AGM on January 28th 1992 was attended by around 50 members. 4 serving officers and 6 members of the Executive Committee were re-elected as well as Margaret Howse and Gilbert Marsh. The formal business was followed by an amusing and instructive demonstration of spinning, weaving and dyeing by the Hon. Sec. wearing her other hat.

### Future Open Meetings:

**29th April 7.30pm** at Bampton Primary School - a presentation of the school's environment programme by children & teachers.

**29th July 8.00pm** in the Village Hall - a lecture on the history of Bampton in the 17th & 18th centuries by Dr Simon Townley, Victoria County History of Oxfordshire. Guests welcome - £1.00 entrance.

### Recent activities:

Through the indefatigable efforts of a founder member, BEWG has assisted in the preservation of an ecologically valuable hedge bordering the site of the Low-cost Housing project. In addition to researching the history of the hedge and ditch Elaine Townsend logged the wide range of its plant and animal life and mobilised local residents to express their concern that this unique corner of Bampton should not be lost. (see 'Hedging Your Bets' in the Low-Cost Housing Supplement)

BEWG welcomes new members concerned about environmental issues affecting Bampton and its vicinity. For further information contact Ann Norman Tel: 850523

## BAMPTON YOUTH CENTRE

The Youth Centre occupies the premises of the Old Primary School in Church View. Apart from accommodating the Youth Club, the Scouts and the Cubs, the Centre is regularly let out for other community and social events. With a large main hall and ample parking space, the Centre is ideal for the larger party and has a Public Entertainment License for up to 100 people.

For further information contact:

### Youth Club

Chris Connaughton Tel: 850010

### Cubs & Scouts

Leslie Harrison Tel: 773916

Paul Tomlin Tel: 843942

Mrs B Heaton Tel: 706020

Hire of Hall Liz Banham Tel: 850019

### General enquiries

Colin Allport Tel: 850411



## BAMPTON W.I.

MISLAID - Women's Institute Scrap Books  
- any information gladly received by -  
Jean Howell (President) Tel: 850684

## THE MS SOCIETY

### West Oxfordshire Branch

### 25th April Annual General Meeting

2.00pm at Burwell Hall, Witney

Election of Committee will be followed by a talk on 'Toys through the Ages' by Mr & Mrs Hickman

If anyone would like to join the committee, please send nomination by 4th April to:  
Jill Cooper (Hon. Sec.)

102 Woodstock Road, Witney OX8 6DY

## THE BAMPTON BUSH CLUB

The Club is run by volunteers for the retired elderly of Bampton and surrounding district. It is held each Wednesday, 10.00am to 2.30pm at the Scout Training Centre (behind the Youth Centre), Church View, Bampton.

If you would like to join either as a helper or as a member or know someone who would benefit, you will be most welcome to come along for a visit.

It is a very good place to renew old friendships and meet new people.

For more information contact:

Mrs Granville Tel: 850407 or

Mrs Argles Tel: 850991 who will be happy to help you.

## BAMPTON SWIMMING POOL APPEAL

Did you help to build the swimming pool at Bampton Primary School? Do your children currently benefit from the pool? Did you know it is in danger of being closed? It would be a great pity, but unless volunteers and funds can be found, this may well be the case.

Despite a series of fund raising events the Appeal is still not half way to the target of £5000.

Further events are planned as follows:-

**8th April - A Guitar Trio Concert** (works by Clapton, Grieg and many others) in the School Hall at 7.30pm

Tickets: £4.00, concessions £2.00.

**26th April - A Recital at Weald Manor** by Raymond Burley (guitar) and Jacqueline Fox (mezzo-soprano) at 7.30pm.

Tickets: £12 including supper with wine.

Tickets for both events available from the Cotton Club, Rosemary Lane, Bampton Tel: 851234 or 850793.

**4th May - A Tombola Stall**  
at the May Day Street Fair

**9th May - A Sponsored Non-Stop Music Marathon**

in The Village Hall at which

The Grand Spring Raffle will be drawn.

**26th June** - The ever popular children's concert in the School Hall.

Also planned is A "Pop" Quiz in which teams test their knowledge of various forms of music, date to be arranged.

If you cannot support any of the above events but wish to help the Appeal, please send a donation to the Primary School marked "Pool Donation".

If you prefer to make a loan to the Appeal, please contact Linden Burley Tel: 850793. Anyone may hire the pool for private use by becoming a member of the Swimming Pool Club. Further details available from Linden Burley Tel: 850793

## BAMPTON BROWNIES

Mrs Jenny Izzard, Bampton District Commissioner, invites any girls aged 7 to 10 years who want to become Brownies to join the pack at Standlake which meets in Standlake Village Hall on Thursdays from 6.00 to 7.00pm. There is still a great need for enthusiastic adults to help with Guides and Brownies in the district.





# From Appraisal to Action



'The appraisal questionnaire (1982/85) asked whether people would welcome the expansion of the Newsheet into a general Bampton newsletter. Well over half the respondents said they would . . . ' The first issue of The Bampton Beam was published in March 1986.

In August 1988 (Vol.3, No.2) the front page headline was 'We can't afford it' with the subtitle 'House prices in Bampton force the next generation out.' Only two people responded to that article but in the December issue their letters were printed together with a form to be filled out. The response was enormous and proved, to the amazement of the local housing authority, that there was a desperate need for housing for the young people of Bampton whose fami-

lies had their roots here and without whom the local community would lose its heritage and identity.

By March 1989 the Parish Council was actively involved in seeking suitable land and help with setting up a housing scheme to meet the needs of those who had filled in the lengthy questionnaire (published and distributed by The Bampton Beam). Sadly, there have been many delays and the front page headline of December 1989 'Happy Christmas 1991' proved to be over optimistic but, with luck, there will be new homes by Christmas 1992!

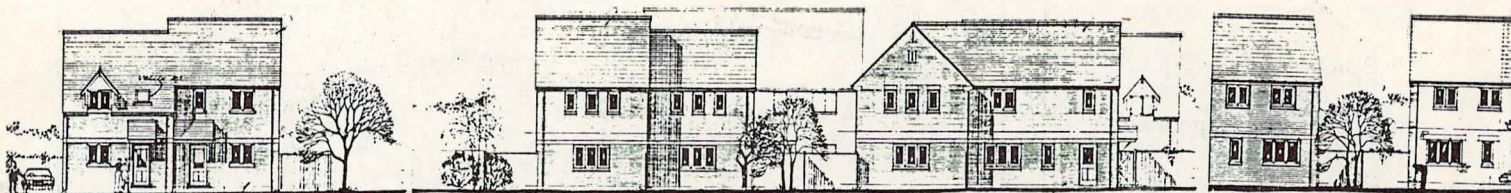
The Appraisal saw the need for subsidised housing, the Bampton Beam publicised and proved the need, the Parish Council with help from other statutory authorities, the County Councillor and our

M.P. Douglas Hurd, have undertaken to solve the need.

Unfortunately, the local housing authority is West Oxfordshire District Council which sees the need for homes as a district problem and does not take into consideration the social need of housing young people in their own home village. They have already imposed conditions on the Parish Council (called a 106 Agreement) in return for providing some of the much needed finance. It is to be hoped in the future that the needs of Bamptonians will be given priority in Bampton.

The first scheme is now being built but the need to replace the lost Council houses will continue so efforts to find suitable land and financial assistance must go on.

**Many lessons have been learned; let's put them to good use!**



Advice from David Ashmore:

## HOUSING APPLICANTS PLEASE NOTE

After over two years of research, campaigning and detailed negotiations, the social housing scheme aimed at providing a range of rented and shared equity housing for local people finally got underway on 17th February. The scheme is being built by Fisher & Townsend (Contractors) Ltd. to a scheme originally conceived and designed by the Coleman Hicks Partnership a firm of architects from Kidlington with experience in rural housing schemes.

In this housing development of private, rented and shared-equity housing the 12 houses for sale on the open market will be built on land which belonged to the Parish Council. The money from the sale of this land plus the profit from the houses will subsidise the rented accommodation. 31 low-cost homes are being built comprising: 4 x 1 bedroom flats, 13 x 2 bedroom houses, 12 x 3 bedroom houses, 2 x 4 bedroom houses 24 of the homes will be

available to rent, with the remainder available for purchase on a shared equity basis.

The scheme has only been able to go ahead because of the commitment and energy of a number of people working in different agencies. A great deal of credit is due to the Bampton Parish Council under the very active Chairmanship of Mrs Jackie Allinson, with a number of other local people working busily, often behind the scenes, on publicity and survey work, proving the need for housing that exists in the local community.

Funding for the scheme has come from a number of agencies including Bampton Parish Council, West Oxfordshire District Council, Oxfordshire County Council and the Housing Corporation which supervises the work of local Housing Associations.

Oxford Citizens Housing Association has played the role of co-ordinating the funding and development process and ensuring the wishes of the Parish Council are met whilst dealing with the legal and management responsibilities that accompany the public money being made available.

\* \* \* \* \*

The final details of how applicants for the housing will be selected are currently under discussion. **It is vital that everyone registers if they have not already done so.** Oxford Citizens Housing Association has a large number of applications on file and will be getting in touch with everyone in the next few weeks but -

**HAVE YOU CHANGED YOUR ADDRESS?**

**If we don't have your correct address, we cannot contact you!**

It is important that anyone who has submitted an application to Oxford Citizens Housing Association (or intends so to do) also registers on the Housing List with West Oxfordshire District Council.

**OXFORD CITIZENS  
HOUSING ASSOCIATION LTD.**  
2nd floor, Northway Centre,  
Maltfield Road, Headington,  
Oxford OX3 9RG Tel: 0865 66633



The Editor wishes to thank the following firms for their generous sponsorship of  
**The Bampton Beam**  
**LOW-COST HOUSING SUPPLEMENT**

# RIDGE & PARTNERS

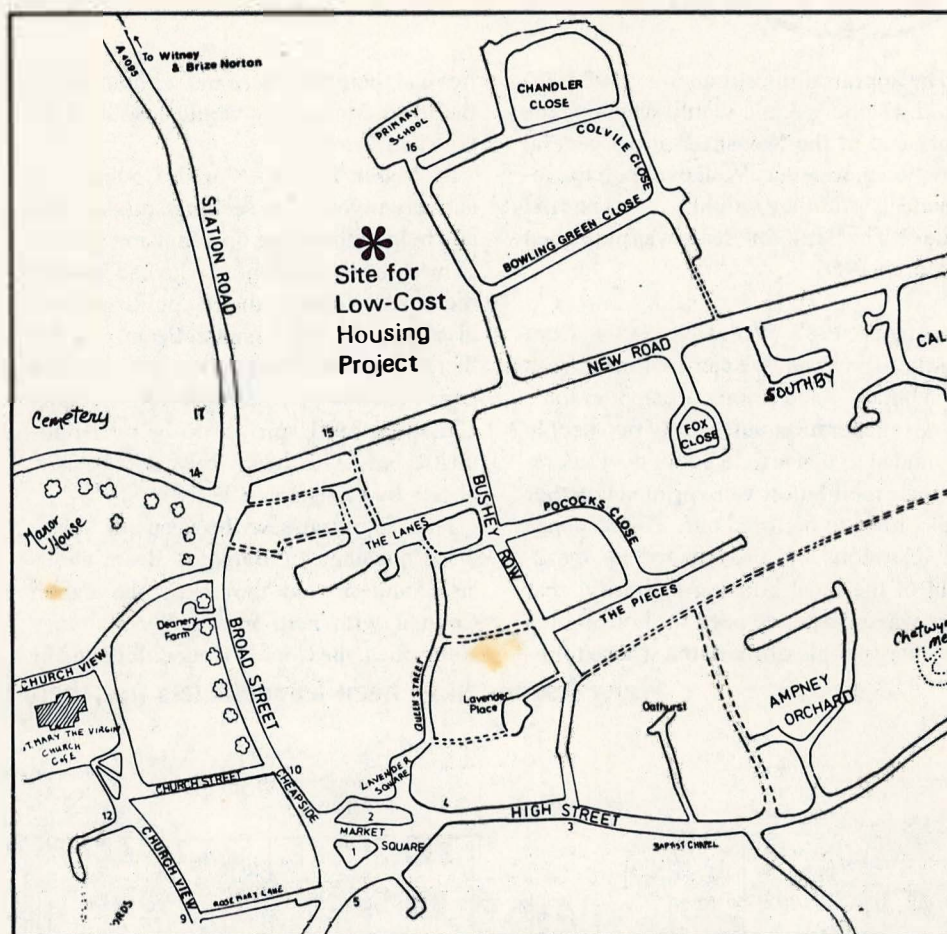
CHARTERED SURVEYORS

QUANTITY SURVEYORS  
 BUILDING SURVEYORS  
 PROJECT MANAGERS

# COLEMAN HICKS PARTNERSHIP architects

- BUILDING DESIGN
- PROJECT MANAGEMENT
- PLANNING & COST CONSULTANCY
- INTERIOR DESIGN

## SKETCH MAP OF BAMPTON



## ALL BAMPTON CHILDREN

Will benefit from the newly equipped Playground

### Fisher & Townsend (Contractors) Ltd

Building Contractors  
 HAILEY, WITNEY, OXON.  
 OX8 5TX

All types of building and joinery work undertaken from repairs and maintenance to large Housing Estates, Schools and Industrial Premises.

Specialists in renovation and extension of natural stone properties in the Cotswolds also

All types of alterations, decorations, bar and back fittings to Hotels and Public Houses.

Enquiries and Estimates:

Fax: 0993 776395

Telephone:

0993 773911

(Eight lines)



Thanks to the Low-Cost Housing Scheme the neglected and derelict playground off New Road will be resited and re-equipped. It certainly wouldn't have happened in any other way. Following an article in The Bampton Beam in August 1990 "RENOVATING BAMPTON'S PLAYGROUND for the next VILLAGE VENTURES?" in which the Parish Council Public Grounds sub-committee sought to enlist the help of parishioners, there was not one single idea or offer of help!! Self-help of this kind is not very popular in Bampton.

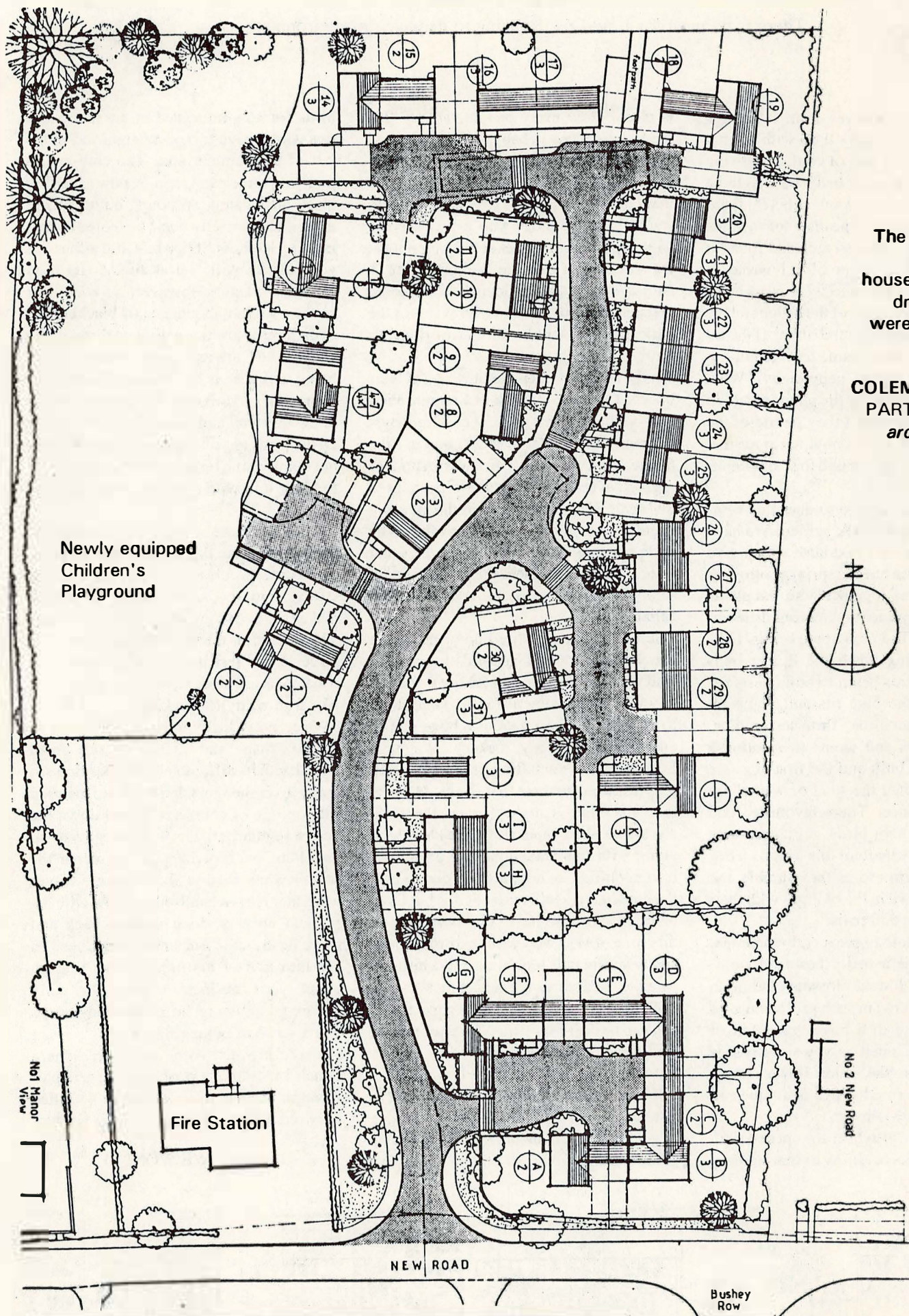
Happily the Parish Council is now able to commission Wicksteed Leisure of Kettering, Northants to design a playground that will cater for the needs of both toddlers and older children. The proposed equipment includes climbing frames, slides, swings, whirling platforms and a goal post in the Junior Area for budding football stars.



The equipment will be installed with a surrounding area of thick red safety tiles. The cost will be in the region of £32,000. Lets hope that many generations of Bampton children will enjoy this safe and stimulating play area and that it will not suffer from the scourge of vandalism.



# SITE PLAN FOR LOW-COST HOUSING SCHEME



The site plan  
and  
house elevation  
drawings  
were supplied  
by

**COLEMAN HICKS  
PARTNERSHIP**  
*architects*



## HEDGE YOUR BETS

by Elaine Townsend

There is no need for Low-Cost Housing to damage the environment.



Dad said "You'll never do it. It belongs to the Council and they'll do with it what they want to!" He was of course referring to a particular piece of hedgrows due to be uprooted. "Do you want a bet?" I answered. "That hedge means a lot to some people." I did some research and found it was at least 330 years old. I wrote to BBONT and CPRE who were most helpful, confirming the age of the hedge and the amount of wildlife found there. I heard people say "What a shame they're pulling it out." I also heard people say "What about that old hedge by the playing field in New Road? Why don't they get rid of the tatty thing?" Well, it's obvious to me that they don't live near enough to it to encounter its many joys

As the Seasons change so does this wonder of nature in my back garden. We have several kinds of tree and bush which give a variety of green hues as spring progresses to summer. This together with the plants and insects they encourage bring different types of bird. The crab apple brings bullfinches in spring when the flower buds come. Other birds begin to build nests beginning with the blue tits and going on through to blackbirds, thrushes, robins, hedge sparrows and wrens to mention a few. Nests are built and the first eggs are laid. This is when the stoat or weasel are more in evidence. Their favourite food being eggs and baby birds. A bit gruesome but a necessary part of the chain. They have their charm too as they tumble and play on your lawn in the twilight with their playful squeaks and trills.

On a lighter note to see a crab-apple tree in full bloom is a really beautiful sight. Large cream coloured blossoms fading to pink and almost red in such profusion as to put one in mind of a huge water fall of colour, and the smell as you walk past is heavenly. Even the elder flower has a strong pungent smell which is unique and cleansing to ones senses.

At this time we also hear the cuckoo with its clear sweet voice telling us that summer

is close. How many people can say that they have watched a baby cuckoo being fed by its foster parents and grow to maturity in their own back garden. I can, thanks to that tatty bit of hedge. If you sit still and watch in the summer you can observe a lesser spotted woodpecker busy tapping at the soft bark of a tree to find grubs for its babies back in a hole somewhere. The tree creeper too finds its food in crevices of the bark. But to catch this bird at work needs more careful observation.

In the summer when the birds are at their busiest the sparrowhawk is a regular visitor, on the hunt for an easy meal amongst the many species (at least 28) that use the hedge. And what better on a warm summer night than to be lulled to sleep listening to owls call. Then to wake up in the morning to collared doves cooing to each other. The owls come looking for voles, shrews and even frogs that frequent the hedge finding safety, dampness and shade in the dense foliage.

Summer is getting tired now and we've watched the young blackbirds learning to find worms. The thrush teaching its young to winkle out snails, using the same stone to hit them on until there is a huge pile of empty shells on my rockery. We have heard Jenny Wren telling her large family it is time to take their first flight. Now its time for other visitors. The thistles have started to shed their fluffy heads which along with the dandelions and groundsel bring goldfinches hopping and diving into the garden. Never in ones or twos but fives or sixes. We also have long-tailed tits at this time of year who with their rosy glow and beautiful tails look almost like birds of paradise. Hedgehogs are getting more daring in their search for something good to eat and can be heard snuffling about after dark feeding up for a long sleep.

Autumn is here now and the leaves on the different trees are changing colour rapidly. Some change steadily from green to yellow to gold. Others are more erratic with green, gold, red and brown all on one stem. The

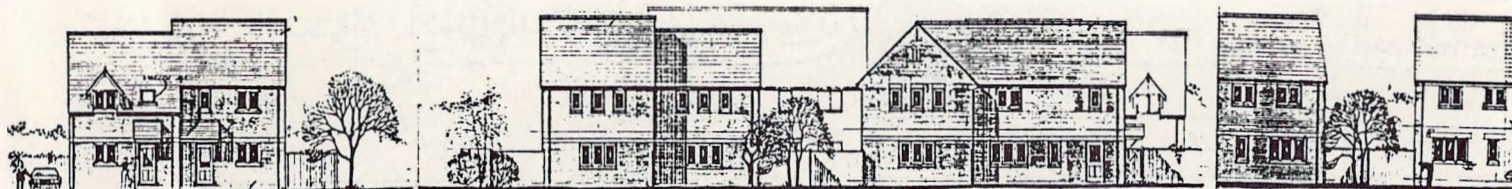
birds are now interested in the many berries which have turned a bright red in the last of the summer sun. The crab-apples look large, rosy and as juicy now as the big black dusky sloe. Although both of these make excellent jelly don't be fooled by that inviting look, as, if you bite into either one your mouth will feel as though its been turned insideout. However, all is not lost as there are an abundance of blackberries of different varieties entwined through the hedge which are ready now, some of these being as sweet as the best summer strawberries in their own way. The small mammals know this well and take advantage. So too do the birds as you'll know if your've ever put out washing on a fine Autumn day only to bring it in with a big purple splodge on it!

When this time of plenty is over and the harvest is home, things slow down a pace. Frost makes cobwebs look like jewelled strings and the snow, when it comes, makes the trees look full of blossom again. This is the time that the fieldfare come. like large fluffy thrushes with pinky brown waistcoats on. They sit together in the trees like fruit ready for picking.

We are very lucky to have the variety of colour, shape and sounds on our small island with its difficult climate, let alone so many in one hedge! Oh, I forgot to mention the fox. He of course is up and down the hedge regularly using it as a roadway all year long, but is perhaps easiest seen in the winter when food is short and the leaves are gone. He is a handsome fellow with his pricked up ears, long straight back and thick bushy tail. But one doesn't need to see him to feel his presence, as you go about your business evening or early morning, knowing he is watching gives one a sense of belonging.

These are just some of the reasons a bunch of ordinary people in a particular location decided to try to save a so called tatty old hedge at the end of their gardens

and WE WON!





# Board



Board page in a sealed envelope  
payment of £1.50

## OXFORD COLLEGE OF FURTHER EDUCATION

**FOUR DAY ENTERPRISE START UP COURSE** builds up the skills needed to plan, set up and run a business successfully. The course is subsidised by the Training and Enterprise Council with a small charge of £50 (£10 if you're unemployed). Courses start 27 April, 4 & 29 June.

**BUSINESS SEMINARS** are aimed at newcomers to business and those who wish to develop their business skills.

Book-keeping - 5 June

Finance for Survival - 19 June

Time & Crisis Management - 3 July

Practical Market Research - 2 April

Marketing your Business - 1 May

Promoting & Selling - 15 May

Further information from Sue Brough,

Small Business Centre Manager

Tel: 0865 716171

## BAMPTON HORTICULTURAL SOCIETY

25th April - Coffee Morning and

Bring & Buy Sale at 18 The Pieces

4th May - Plant Stall at Street Fair

25th May, Spring Bank Holiday -

**GRAND VILLAGE FETE** at Sandfords

Field - Car Boot Sale, Morris Dancing,

Children's Amusements, Fancy Dress, Teas,

Raffle and A **GRAND DOG SHOW**.

(A donation will be given to

Support for the Sick Newborn & Parents,

The Baby Unit, John Radcliffe Hospital)

18th July - Coffee Morning at The Town

Hall 10.00am to 12.00

8th August - **MAIN FLOWER SHOW** in

The Village Hall



## THE ROYAL BRITISH LEGION POPPY APPEAL 1991

The Local Organiser, Mrs Yvette Brown, wishes to thank everyone in Bampton and Lew for their donation to the Appeal which amounted to £1269.45; special thanks to the volunteers of the Street Collection - it is not always an easy task, but very worthwhile!

## BAMPTON PUMPKIN CLUB

**Elected Officers 1992:-**

President: Dor Thomson Tel: 850206

Chairman: Max Norman Tel: 844591

Treasurer: Jim Gascoigne Tel: 850119

Secretary: Carol Claxton Tel: 851428

The Committee would like to thank everyone who supported the Club last year and enabled 392 pensioners to benefit.

### Forthcoming Events:

Easter Saturday 18th April 2.00pm

**EASTER BONNET PARADE**

in the Market Square

**Monday, 4th May 10.00am to 5.00pm**

**STREET FAIR**

Entries include "Nigel the Clown" - Dog

Show - Street Stalls - Tombola - Raffle -

Morris Dancing & Bar-B-Q

*Prizes for Raffle and Tombola would be much appreciated and should be given to Dor Thomson or Jim Gascoigne*

## BAMPTON WIVES CLUB

Meetings on the 3rd Wednesday of each month in the Village Hall unless otherwise stated, starting at 8.00pm.

Members £5 per annum; Guests £1

15th April Visit to -

Spinnages Dried Flowers

20th May Talk about The Blue Cross

17th June Visit to Friars Court

For further information Tel: 851206



## S.P.A.J.E.R.'S.

**40th SHIRT RACE - Saturday 23rd May**

Fancy Dress Competition

at The Jubilee 6.15pm

Junior & Intermediate Race 7.15pm start

Senior Race 7.30pm start

Plus various other attractions!

## BAMPTON PRE-SCHOOL PLAY-GROUP

Sessions for 3 - 5 year olds are held in our own building between 9.15 & 11.45am on weekdays during school terms. To put your child's name on our register or find out more please contact Carol Howard Tel: 850588. A **Treasure Hunt** open to anyone will be held on Wednesday, 8th April. Fun for all the family and you do not have to know Bampton well to solve the clues. Meet at Playgroup Building (behind the Primary School) at 2.00pm. Refreshments available on your return. Only £1.50 per family

## BAMPTON DRAMA GROUP 1991-92

1991 saw fewer productions than usual; our actors were, as they say, 'resting' and deservedly so, after an exhausting schedule in 1990. The group was, however, far from idle and among other activities enjoyed a Barn Dance and a pleasant evening presenting 'gobbets' of Shakespeare on the lawns of Weald Manor, thanks to Major and Mrs Colville.

Two of our members took part in a production of 'The Merry Wives of Windsor' by the newly formed Cotswold Arcadians. Peter Murray from the Watermill Theatre in Newbury ran a 'page to stage' workshop for us on all aspects of production and organised a very enjoyable musical evening to show members, despite all their protestations, that they can sing! Peter also gave invaluable advice on the direction of Tom Stoppard's 'The Real Inspector Hound', our Autumn production much enjoyed by audience, cast and crew.

To break the tradition of the annual pantomime, we presented a revue, 'The Lime Street Broads'. Apart from the songs, all material was original and touched on local, national and international issues, giving considerable free publicity to a local supermarket in the process! The revue format proves to be very popular with our audiences and may well be repeated.

The two one-act plays in May directed by Pauline Ruff with entirely female casts, will relieve our overworked male actors and allow more women members to be on stage. A further production is planned for October - Bampton Drama Group is very much back in action! As for post New Year 1993, who knows? Panto? Revue? Ice Extravaganza? The suspense must be unbearable!

We would be delighted, as always, to welcome as new members, anyone new to the village or who has not as yet found time to join us. We need people interested in acting, production, back stage or front of house work. Do join the fun! Contact our Membership Secretary - Mollie Martingell Tel: 851199

## FORTHCOMING ATTRACTION

*There could be -*

**'A Slight Misunderstanding'**  
in the Village Hall

May 14, 15, & 16 at 8.00pm

*but everything will be all right because -*

**'Darlings, You Were Wonderful!'**

Tickets: £3 from The Cotton Club,  
Rosemary Lane Tel: 851234

*If you would like to help in any way, please contact: Pauline Ruff Tel: 851503*



# Arts Page



**Maureen Wilsker  
& Jo Lewington**

(who gave you the "Paradise Garden" last year), are planning a new exhibition in late April. It will be held in Jo's garden at Sandford Cottage and there will be pots & plaques, birds, huge frogs & other surprises. Watch out for the posters.

## 'FLORA'

An exhibition of flower paintings will be on show at The Gallery, The Town Hall, Bampton as part of the **OXFORD ART WEEK** May 16th to 31st

## ART CLASSES

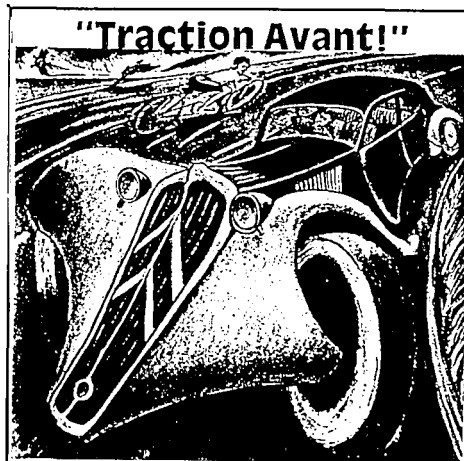
at The Studio, Little Place, Bampton  
Delightful & informal setting.

Beginners to Advanced are welcome.

Annual Members' Exhibition.

For more details please contact the class  
Tutor: Paul Nicholls MA(RCA) The Old  
Barn, Holwell, Burford, Oxon OX18 4JS  
Tel: 0993 82 2116

The WEST OXFORDSHIRE ARTS ASSOCIATION presents a dynamic exhibition of drawings, pastels and prints by West Oxfordshire artist Paul R.P. Nicholls MA(RCA) on the subject of "Speed" which covers 20 years of work by the artist. Subject matter includes automobiles, aeroplanes and boats plus wooden toys made by the artist. The images offer a variety of treatment and method, some humorous, some serious. Paul has included drawings carried out in response to the Gulf War which powerfully evoke the mayhem and devastation of the convoys in retreat on the road to Basra. Works range from small pencil drawings to large pastels; also 3 limited edition prints including this whacky picture of a Midget Citroen at Speed - this print has sold world-



wide and signed copies will be available at the exhibition.

from **The Address** given by Barry Webb at the service held in  
Radley College Chapel on the 11th January 1992  
to commemorate the life and work of

## Charles McCord Mussett

One of the many remarkable things about Charlie was that everybody seemed to know him - even more remarkable was that everybody seemed to know him very well. . . Charlie's openness made everyone feel that their relationship with him was special: and it was, because Charlie made sure it was. During the ten weeks that Charlie was in hospital last year, nearly one hundred different people visited him (many several times) and over fifty more wrote, phoned or sent gifts. For a bachelor with no family in this country that tells its own story. . .

Born and brought up in Memphis, Tennessee, he was endowed with southern American characteristics: courtesy, hospitality, a respect for authority and hard work. . . . After coming to England in 1953, he travelled widely - He then took stock of his travels and chose Oxfordshire as his home. He loved its unpretentious but delicate landscape, its warm stone - above all, its lack of organised tidiness. The recent loss of hedgerows and natural meadows distressed him intensely.

He never surrendered his American passport; he never lost his accent - yet he became distinctly English. He remained baffled by the English tolerance of inefficiency; but he was enchanted by village life. He retained his American impatience - to him, one



Photo: Barry Webb

### The artist at work in his garden

person in front of him in a shop was a huge queue - but he retained also his American good manners. He was welcome in so many homes; welcome everywhere. . . . He managed to become a very rare hybrid: a truly American, truly English gentleman.

After the sudden death of his friend Peter Stucley, Charlie needed employment. In 1964 he applied to Radley and was appointed as an Art teacher to fill in for a term. He stayed for 23 years - . . . (when he retired)

He wanted to be quiet at 'Little Weald' - gardening and painting, with a bit of travel thrown in. But there were to be other calls on his time. Some twenty years earlier, together with John and Margaret Birkhead he had helped to found the West Oxfordshire Arts Association. It had thrived, with a highly active gallery in the Town Hall at Bampton and a wide range of artistic activity. They needed a new Chairman; they needed funds; Charlie accepted the challenge and worked tirelessly on their behalf. He founded a trust fund, which became a memorial to the Birkheads; he tried to make the Arts Council take more note of rural areas. He organised a wonderful concert with the King's singers in Bampton church; a memorable Shakespearean evening in Buscot Park. Charlie treated W.O.A.A. like a pupil who needed nurturing, and with great success. However, by early 1991 he had run out of energy. . .

It was time for his last journey.

Throughout the last difficult months, Charlie remained Charlie: always more concerned for his visitors than for himself. At his request, his ashes were scattered in the churchyard of Broughton Poggs Church. It was a beautiful cold, sunny, frosty morning. Charlie would have loved it; he would have painted it.



*Solution to*  
**BEAM PRIZE CROSSWORD**  
**December 1991**



Correct solutions received from:-

Gerald Pickford, Bampton

Mr R J Terry, Bampton

Mrs E MacDonald, Bampton

Mrs A Marsh, Bampton

The £5 prize has been won  
 by Gerald Pickford

(There were 2 ambiguous clues

14 Across DOG/HOG

31 Down GAB/GAS acceptable)

## Junior Beam

Number 2

August 1992

Children of all ages invited to send in contributions for The Bampton Beam Junior Supplement to be published in the summer.

Drawings, Poems, Stories, Games etc. and Letters to The Editor saying what you love about Bampton or what you hate most!

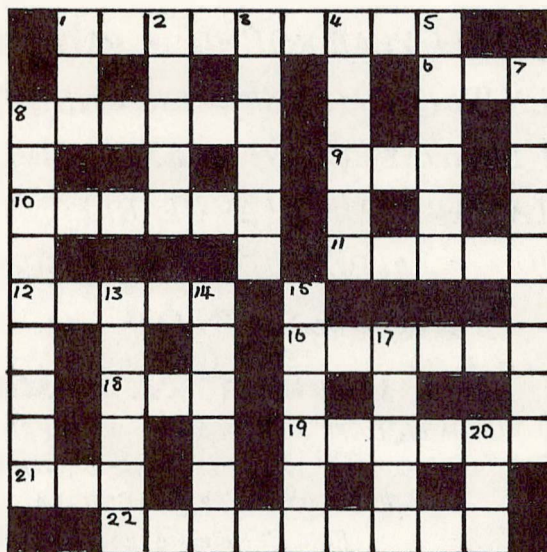
We look forward  
 to hearing from you.

**Deadline Date - 5th June**



# The Bampton Beam's Own Prize Crossword

£5 Donation to Cancer Relief MacMillan Fund in memory of Les Caddy  
 £5 Cash Prize for the first correct puzzle opened on 15th May 1992.



### CLUES ACROSS

- 1 Inflexible
- 6 Reptile
- 8 Flow
- 9 Grain
- 10 Requiem
- 11 Fresco
- 12 Vessel
- 16 Rotors
- 18 One
- 19 Honorarium
- 21 Nee
- 22 Runner

### CLUES DOWN

- 1 Missing
- 2 Location
- 3 Injects
- 4 Flowing
- 5 Church
- 7 Festival
- 7 Deprived of Power
- 8 Choice
- 13 Trimmer
- 14 Medicine
- 15 Stiffen
- 17 Boudoir
- 20 Grain

The solution will be published in the next issue; if you can't wait until then, send a sae with your entry to The Editor, The Bampton Beam, c/o The Cotton Club, Bampton.

## R. COOPER

BUILDERS — PAINTERS — DECORATORS  
 CARPENTRY — JOINERY — GENERAL REPAIRS  
 SPECIALISTS IN DRY STONE WALLING

Phone:

CARTERTON 842444



# THE TALBOT HOTEL RESTAURANT & BARS

MARKET SQUARE, BAMPTON IN THE BUSH OX18 2HA Tel: (0993) 850326

- OPEN ALL YEAR ROUND • PATIO GARDENS AT REAR
  - CHILDREN WELCOME - SPECIAL CHILDREN'S MENU AVAILABLE
  - SUNDAY LUNCH • EXTENSIVE BAR SNACKS
  - A LA CARTE MENU AVAILABLE IN THE RESTAURANT
  - PIZZA TAKE AWAY SERVICE
- OR JUST CALL IN FOR A QUIET DRINK

## LIVE MUSIC EVERY MONTH

ACCOMMODATION AVAILABLE - WITH PRIVATE FACILITIES

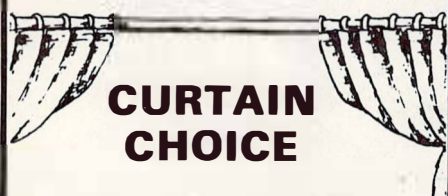
ALL ROOMS CENTRALLY HEATED WITH COLOUR T.V.,

TEA AND COFFEE MAKING FACILITIES

FIRE CERTIFICATES AWARDED



**A.A.  
LISTED**



## CURTAIN CHOICE

Made to Measure Curtains  
Alterations and Accessories  
Your Material or Samples Available  
Fast Door to Door Service

ADVICE AND ESTIMATES FREE  
**CARTERTON 841368**



## The Cottage Market Square Bampton Oxon

Telephone 0993 851550

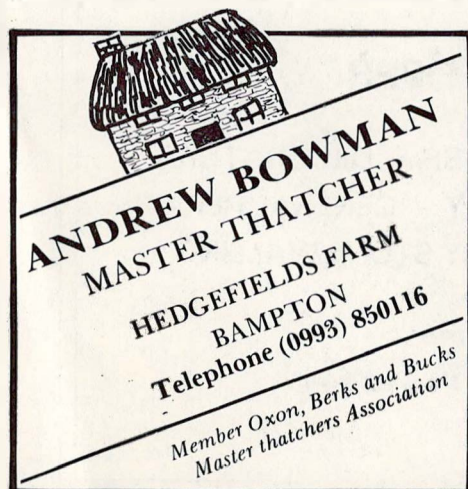
- ☞ Homeopathic Remedies
- ☞ Photographic
- ☞ Health Foods
- ☞ Baby Care
- ☞ Medicines
- ☞ Cosmetics
- ☞ Toiletries
- ☞ Perfumes
- ☞ Gifts

*J. Godfrey & Son*  
(EST 1906)

## FUNERAL DIRECTORS

TEL BUCKLAND  
036787 210 or 655

FOR A DAY & NIGHT CARING,  
PERSONAL SERVICE



**ANDREW BOWMAN**  
MASTER THATCHER  
HEDGEFIELDS FARM  
BAMPTON  
Telephone (0993) 850116

Member Oxon, Berks and Bucks  
Master thatchers Association

## MARTIN DREW

MSSCh MBChA.

## CHIROPODIST

38 COTE ROAD  
ASTON  
OXFORDSHIRE

Tel: (0993) 850547  
(mobile) 0836 246203

HOME VISITS



# MEDICAL MATTERS

## OXFORDSHIRE COMMUNITY CARE PLAN 1992/93

The NHS & Community Care Act 1990 requires every local authority, Social Services Department in England and Wales to produce a Community Care Plan annually, starting in April 1992.

Every parish council has recently received a summary of Oxfordshire's Plan. It gives information on population and who needs care in our communities; how care is funded and planned; what services exist and what are planned. It includes an invitation to anyone interested to become involved in planning for care in the community.

Great emphasis is being placed on planning and consultation within communities and this is being co-ordinated by Social Services divisions. . . . Anybody interested in becoming involved in the process or would like to know more about community care in general should contact their local Community Care Planning co-ordinator - **BAMPTON (West Oxfordshire)** Rod More O'Ferrall, Deputy Divisional Director, 11a High Street, Witney OX8 6LW Tel: 704517

## PAINLESS SURGICAL OPERATIONS AT BAMPTON

from **JACKSON'S JOURNAL 1847** -  
kindly sent to *The Editor*

by *Mrs Dorothy Wise of Clanfield*

"To the Editor. Dear Sir, I have just returned from the Metropolis (where I witnessed) . . . the use of the vapour of aether in alleviating, indeed wholly removing the pain of surgical operations. Stanley Stokes, Surgeon Dentist."

"On Thursday last Mch 4th, E.T. Whitaker Esq, surgeon of this town (*Bampton*), performed the first operation in it (assisted by R.B. Newhouse Esq.) under the influence of ether.

The patient, a young man, aged 20, a farmer's labourer, applied to have the second molar tooth of the upper jaw removed, and upon it being represented to him that it could be extracted without pain, he freely consented to undergo the process.

The ether was accordingly administered from an apparatus, constructed by Mr. Newhouse and in less than three minutes the patient was completely letheonized; when Mr Whitaker opened his mouth and lanced



the gum and extracted a large molar tooth with three fangs, without the knowledge of, or the slightest pain to, the young man.

Upon being questioned as to his sensations at the time, he described in his own words 'as pleasant dreams about summat he didn't know what' but said he felt no pain and seemed much delighted at his good fortune saying 'he shouldn't mind having ever so many teeth out in that 'ere fashion.' Not the slightest unpleasant symptom occurred, the patient going off to plough immediately afterwards. The operation proved most satisfactory and conclusive to both Mr Whitaker and his assistant."

Dr. John Reynolds, MB BS MRCP  
Fiona Williams, MCSP  
Philippa Rayne, DO MRO  
Andrew Fisher, DPofM SRCh  
Lesley Mellin Dip.Arom.A.H.N.

## CENTRE FOR COMPLEMENTARY MEDICINE

above the Dental Surgery  
**MOONRAKER LANE**  
**BAMPTON**

SPORTS INJURY SPECIALIST  
PHYSIOTHERAPY  
OSTEOPATHY  
ACUPUNCTURE  
PODIATRY  
AROMATHERAPY  
REFLEXOLOGY

Telephone:  
Bampton Castle 851359  
Carterton 843636



## IS YOUR BLADDER AS FIT AS YOU? CAMPAIGN FOR CONTINENCE

Posters are currently displayed in public places giving information and whom to contact for help.

### Bampton

Health Visitor Tel: 850934 (+ Ans/phone)  
District Nurse Tel: 851997 (+ Ans/phone)

### Carterton

Health Visitor Tel: 840341 (+ Ans/phone)

### Burford

Health Visitor Tel: 823521 (+ Ans/phone)  
District Nurse Tel: 823718 (+ Ans/phone)

Stress incontinence is the involuntary leakage of urine during normal activities of living e.g. sneezing, laughing, coughing, and carrying heavy shopping, and during exercise.

It can cause much psychological and social distress. Many women suffer from this problem and do not realise help is available to remedy it.

## QUALIFIED CHIROPODIST

**Paul van Aardt**  
MSSCh MBChA

Registered Member of the  
British Chiropractic Association

Free Consultation

Tel: 0993 843583

Visiting Practitioner - By Appointment





## Happy Memories

Following the article in the last issue, The Editor was delighted to receive a number of letters and reminiscences from those who were Guides and Brownies in Bampton before 1950.

from **Gladys John of Hay-on-Wye**

My memory of the Bampton Guides goes back to 1920 when Miss L. Nettlefold who lived at Bampton Manor started a company after our parents had been to a public meeting at the Town Hall. I was so pleased that I was just 11 and was able to join as it was something entirely different to anything I had done before. I do not remember that she had anybody to help her . . .

We held our meetings in the top room of the old Grammar School a part that had definitely been out of bounds previously although we had been in the bottom part for cookery lessons taken by Mrs Gordon.

It is a pity that there is nobody to continue the good work but there are not the "ladies of leisure" that there were when I was a child. . .

I was most interested in **Emmie's son** he is a great credit to her.

Long may the magazine continue.

from **Mrs Bixter (nee Gillett) who lived at "The Haven", Buckland Road**

I enjoyed reading about The Bampton Girl Guides, there was certainly a group before 1950. I went for a while and I would have been 37 in 1950, a bit old for the Guides!

The vicar's daughter from Aston was the Lieut, I'm not sure who the Captain was, it could have been Mr Busby's daughter (Dora Unwins), the Lieut name was Preedy, we had three patrols - The Robins, Canaries and Swallows. . . I reckon I was about 10 years old when I belonged.

from **Mrs Freda Bradley (nee Daniels)**

I remember we used to have our meetings upstairs in the Old Grammar School (Library). The patrols had a corner each in the room - I was in the Robins . . . When I was in the Girl Guides we made the triangle garden just inside the Church gate, it must have been 1937, 38 or 39 as I was 13 years old when the war broke out. Edna Hunt (Hirons) was a guide at the same time, others that I remember have moved away.

### CORRECTION to photo caption in last issue

Remembrance Sunday 1950  
Ann Spurrett, Dinah Dafter (colour bearer) & Elizabeth Loveridge

from **Mrs Daphne Barrand (nee Tanner) of Abingdon**

I was a Guide in Bampton during the War years. We moved to Bampton in 1939, my father being of an old village family, the Tanners. My mother still lives in the village aged 92.

Our Guide Captain was Emmy Papworth and we used to meet in the Old Grammar School and sometimes in the summer we met for drilling in the gardens of Weald Manor. I was the Nightingale Patrol Leader and also standard bearer for Church parades. Once we attended a rally in the grounds of Christ Church college, Oxford. Guides came from all over the area to march past Lady Baden Powell. I carried the placard for the south division, I remember it rained and the lettering ran. Afterwards we went to meet her at the Town Hall.

I have one tatty photograph of some of us doing a house to house collection for paper salvage to help the war effort.



The people in the photograph are as follows to the best of my recollection: Starting from the left, The girl with the ribbon in her hair was an evacuee. Next to her was Brown Owl (name forgotten). I am seated on the handle of the cart. Next to me standing is Joan Peyman (her father was the Station Master). Behind her is Emmy Papworth, Captain. The small face in front of Emmy I cannot remember, neither the person behind Brown Owl. The girl right at the top, half out of the photo is Kathleen Robinson, her mother lived in the village until she died just a year or two ago.

The district commissioner was a Mrs Canadine, the Rector of Alvescot's wife. We used to go to the Rectory for a days 'camping', lighting fires and cooking etc. as real camping was not allowed during the war.

from **Mrs Ruth Wheeler (nee Shergold)**

I would like to add a little information as to when the 1st Brownies were started in Bampton. I think I am right in saying that in 1938 Miss Susan Gillman who lived with her mother, Lady Gillman and her sister Kitty at Bampton Manor, started the first pack and was Brown Owl until she left the village. I was 7 years old and was able to join with 23 other girls. We had our meeting in The Manor, in the big play room. (which I believe now is the Drawing Room). Miss Cowper who was the cookery teacher at the school was our Tawny Owl and we had some very happy times. My first trip to a Pantomime was with the Brownies and we went to Oxford to see 'Mother Goose' I remember well the Dame calling out "Are the 24 little Brownies from Bampton here?" and we all stood up looking very proud in our uniforms. Sadly after Lady Gillman moved away we then had our meeting in the Old Grammar School the room at the top with Miss Cowper as our Brown Owl.

A letter to **Mrs Jenny Izzard (Bampton District Commissioner)** from **Mrs Joye Beckett (nee Long) Victoria, Australia**

I was in the Girl Guides from 1927 - 1931. Our meetings were held in the Old Grammar School which I think is now a library. Our Lieutenant was a Ruth Preedy, the vicar's daughter from Aston, and the late Mrs Jack Green of Bampton was also involved. On occasions we visited Eynsham Hall the home of Lady Evelyn Mason, at that time.

I have also written to Mr Morton as I was able to tell him the other people in the magazine on page 8. There were only 3 I wasn't sure of. 9 of them were my relatives, all of them deceased now except the little girl down the front in the white dress and panama hat, she was my sister (Eileen Long) 9 years old at that time, she was 7 years younger than me. We are both widows now and she lives in Yorkshire.

### A Tisket-a-Tasket

DRIED & SILK FLOWER DESIGN

Introducing Present Perfect postal gift service

Selection of arrangements  
in stock and commission taken for  
reception areas  
hotels, pubs, restaurants  
weddings, functions (including flower arches)  
shop windows - homes - gifts

PLEASE PHONE BAMPTON CASTLE (0993) 850483 or 851803



## A. SIMMONDS

Market Square, Bampton Tel: 850204  
The Old Fashioned Village Store

**Traditionally Baked Bread & Cakes**

**Groceries, Confectionery, Toiletries**

**Whole Foods**

**Large Range of Pet Foods & Requisites**

**FREE LOCAL DELIVERIES**

## E. TAYLOR & SON

Funeral Directors

**Established 1885**

**Personal Service**

- Complete Funeral Services
- Private Chapel of Rest
- Day and Night Service
- All kinds of monumental work carried out

**19 CORBETT ROAD, CARTERTON OX8 3LG**

**Telephone:**

**Carterton 842421 or 844205**

**Witney 702123 (day-time)**

## GREY GABLES GARAGE

CURBRIDGE, WITNEY, OXFORD OX8 7PD  
TELEPHONE: WITNEY 702609

**NEW SKODA DEALER**

**New & Used Cars  
of other makes available**

*MOT and garage repairs*

🔧 **SKODA** - FIRST FOR VALUE



## N. WOODLEY BUILDING MAINTENANCE

*Small Extensions Built  
Roof Tiles And Ridges Replaced  
Patios And Garden Walls Built  
Electrical, Plumbing And Carpentry  
Work Undertaken*

**COMPETITIVE RATES**

**20 NEW ROAD, BAMPTON TEL. (0993) 850753**

## WITNEY GRASS CUTTING SERVICES

**78 DARK LANE, WITNEY  
TEL: HERBY ON 0993 775447**



**Heating Problems ? Have no Fear  
Quick and expert help is near!  
Oil Fired Systems are just the thing  
Especially when maintained by King!**

**John King  
Avia Boiler Care**

**Phone:- Bampton Castle 851371  
(24hr Answer Phone)**



# THE ROMANY INN

## 17th Century Freehouse

BRIDGE STREET,  
BAMPTON, OXON

Telephone: 0993 850 237

### SEPARATE DINING ROOM

### 3 Course Sunday Lunch £5.25

*Soup of the Day*      *Pate Maison*  
*Melon*                  *Florida Cocktail*

*Roast Beef with Yorkshire Pudding*  
*Roast Lamb or Roast Chicken*  
*Trout Meuniere*

*Served with Boiled & Roast Potatoes*  
*and Vegetables of the Season*

*Apple Pie & Cream*      *Pears & Cream*  
*Sherry Trifle*          *Peach Melba*  
*Gateau*                  *Ice Cream*

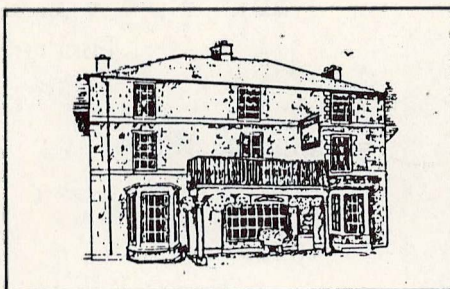
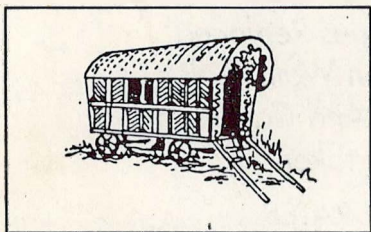
### 3 Course Menu - Monday to Thursday £5.25

*Florida Cocktail or Pate Maison*  
*or Whitebait or Mushrooms & Cheese*

*Sirloin Steak 6oz or Plaice 6/7oz*  
*or Braised Pork Chop 8oz*  
*or Roast Chicken*

*Served with Potatoes & Vegetables of the Day*

*Homemade Apple Pie or Gateau*  
*or Pears & Cream or Cheese & Biscuits*



### FAMILY BEER GARDEN play area for children including Enchanted Tree, Mushroom, See Saw

*Good Homemade Food at Sensible Prices*

*Bar Menu served 7 days a week*  
*lunchtime and evenings*

*Homemade Dishes - Chillie Con Carne,*  
*Beef Curry, Chicken Curry, Lasagne,*  
*Shepherds Pie, Chicken & Mushroom Pie,*  
*Steak & Mushroom Pie, Steak & Kidney Pie*  
*plus Lambs Liver, Braised Pork Chops, Steaks,*  
*Roast Chicken, Plaice, Haddock, Scampi,*  
*Trout, Omelettes, Gammon Steak and more.*

*All served with a choice of potatoes*  
*and a choice of fresh vegetables*

**PRIVATE FUNCTIONS**  
*up to 30 people catered for*

**Recommended by the**  
**GOOD BEER GUIDE and the GOOD**  
**FOOD GUIDE**

*Accommodation - Recommended by the*  
*Sunday Times - quality letting rooms*  
*Double Rooms with vanity sink (2 persons)*  
*£25.00 per night incl. VAT*  
*Brand New Double Rooms En Suite*  
*£36.00 per night with full English Breakfast*

## THE BAMPTON BEAM

is published three times a year and  
distributed free to all residents in  
Bampton.

Extra copies available from the Post  
Office & The Cotton Club.

### EDITOR:

Susan Phillips Tel: 850321

### SUB-EDITORS:

Billy Count, Jinnie Brown, Jo Lewington

### ADVERTISING:

Billy Count Tel: 850085

### DISTRIBUTION:

Kari Rossie Tel: 850764

Contributions are welcome at any time  
and should be sent to:-

The Editor, c/o The Cotton Club,  
Rosemary Lane, Bampton OX18 2JJ

### DEADLINE DATES FOR COPY

5th March, July & November 1992

*While every effort is made to ensure the  
accuracy of information printed in The  
Bampton Beam, the editor & publishers  
cannot accept any responsibility for the  
consequences of any error that may  
occur. The views expressed in The  
Bampton Beam are not necessarily those  
of the Editor. Personal views are the  
responsibility of the author in each case.*

The Editor would like to thank ORCC  
for a grant from The Rural Initiatives  
Fund made possible by a generous  
donation from Mr & Mrs J.A. Pye's  
Charitable Settlement.

THE BAMPTON BEAM  
is printed on  
Recycled Paper



## THE BAMPTON DIRECTORY

The Bampton Directory 1991 needs to be updated and reprinted but unless  
reliable help is offered, it may not be possible to carry out the task.

### What help is required?

1. Someone to check all the statutory information.
2. Someone to contact organisations etc. and correct information.
3. Someone to compile an up-to-date Business Directory.
4. Someone to help with advertising.

The work will need to be done in June or September 1992.

If you could offer a few hours at this time, please contact:

**Mrs Susan Phillips Tel: 850321**

If you would like to advertise in The Directory, please contact:

**Mrs Billy Count Tel: 850085**



Need a costume for that  
Fancy-Dress Party?

Don't forget

**Bampton Drama Group's  
New**

**Costume Hire Service.**

A wide selection of items on offer at  
very reasonable rates.

Illustrated catalogue available soon.

Karaoke machine for hire shortly.

Bampton Drama Group  
can help make your party swing!

**Contact: Pauline Ruff**  
**Tel: 851503 (after 6.00pm)**