

The Bampton Beam

APRIL 1992

VOL.6,NO.1

A DECADE OF CHANGE IN BAMPTON

1982 BAMPTON 1985

AN APPRAISAL

INTRODUCTION

"During 1982 it became apparent to the Parish Council that Bampton was on the verge of fundamental changes: a great deal of new speculative housing development was in the offing and at the same time many long established shops were closing. An increasing proportion of the community was "new" and the Parish Council felt that it could not speak for the community and represent its interest without greater knowledge of what that community actually thought of imminent changes and wanted from them. More or less development? More or less employment? To emphasise tourism and crafts or to go for growth and more industry? So with help from the Oxfordshire Rural Community Council, a study was instituted. A village meeting was called in October 1982 and it was proposed to carry out an appraisal of local attitudes.

This resulted in a questionnaire of some 240 questions on a wide range of local topics being drafted and then distributed to every resident in Bampton over the age of 11. Some 1200 questionnaires were returned: a response rate of approximately 65%. There was also a survey amongst the children at the Primary School.

This report is largely based on the results of that questionnaire, with information from other sources such as Council publications to balance the residents' views. . . .

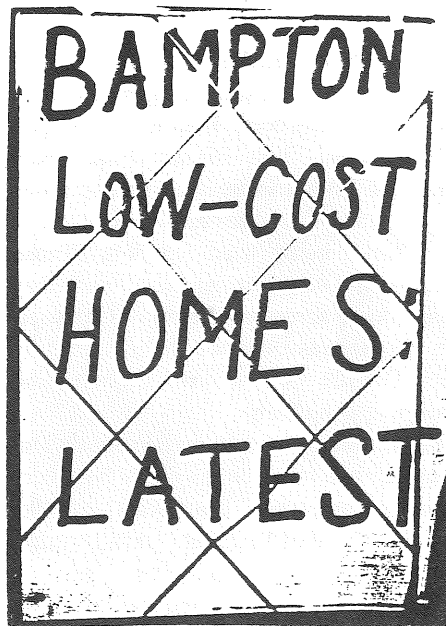
Where comment has been made the committee has endeavoured to be as objective as human nature permits. The hardest task has been to keep a balance between the silent majority and the vociferous minority: the enthusiastic few will always be viewed by some as keen and involved: by others as a meddling lunatic fringe.

One point which should be made is that despite the fears expressed in some of the replies, it was not the purpose of the questionnaire to pry, and it was never the pur-

pose of the committee to seek ways or means of changing the community. If anything, the reverse was true. The committee members took part because they were concerned about changes which were on the horizon and it was hoped the results of the questionnaire would give weight to the Parish Council in its representations with higher authorities."

* * * * *

What changes for better or worse have been made in the past 10 years? Did the views expressed in the Village Appraisal have any influence on the local planners? Many of the old shops have closed but new ones have opened including the 'Supermarket' many people expressed a wish for in the survey. The population has grown enormously and many newcomers have put down roots contributing their energies and talents and becoming part of the community; others have come and gone anonymously. How will village life progress in the next decade? Should be have another appraisal to find out peoples opinions and hopes for the future?



Work has commenced!
The ceremonial laying of the foundation stone will take place on Friday, 24th April
For full story see the centre pages -
LOW-COST HOUSING SUPPLEMENT

On your marks, get set, GO!

Competitors for the annual Shirt Race line up for the start at Weald Corner in 1953. The 40th Original Great Shirt Race takes place on Saturday, 23rd May 1992 . . . turn to page 2



Photo: The Jubilee Inn

Continued from Front Page

THE 40TH ORIGINAL GREAT SHIRT RACE Saturday 23rd May 1992

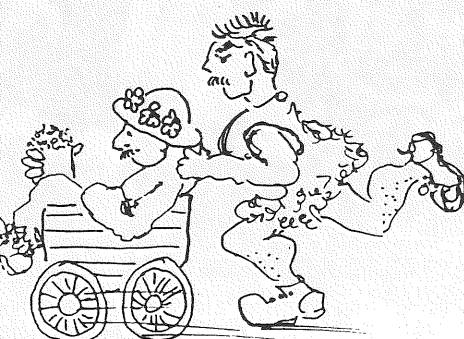
The first Shirt Race was organised as a one-off event to celebrate the Coronation of the Queen in June 1953, and nurses from the Oxford hospitals were invited to come over to Bampton with their collecting boxes, and make a collection during the race.

It was an 'adults only' race started from the Weald corner by Ernie Shepherd firing a 12 bore shot gun. Competitors had to pay 10/- in advance of the day in order to enter, and this was then refunded to them on completion of the race. They had to drink half a pint of beer at each of the then 11 pubs in Bampton. A marshal was positioned at each pub to make sure that all the rules were adhered to, and the competitors were given a card (usually in the form of a beer mat) to prove that they had stopped there. The winners on that occasion were Harry Hampton and George Hunt, who also won in subsequent years. The SPAJERS did not exist then but once it did, took the Shirt Race under its wing, as that first occasion had proved so successful; and in its hey day, the adult race would attract 30 or more pairs of competitors.

Things have changed somewhat over the years and now there are races for Juniors (Primary School children) and Intermediates (Secondary School children). Bampton can no longer boast quite so many public houses - therefore, fewer 'stops' - but they kindly provide the drinks (non-alcoholic for the youngsters!) free of charge. The collection is made by members of the SPAJERS for the benefit of local pensioners. There is a Fancy Dress Parade with prizes for the best costumes in each section.

The SPAJERS hope there will be a record number of entries for all 3 classes of the 40th race. Competitors are invited, for the first time, to seek sponsors although this is not a condition for entry.

Sponsorship forms are available from:
The Headmaster, Bampton Primary School
Alan Gaydon, 3 Broad Street, Bampton



Cartoon & others in The Beam by Jo Lewington

The Deanery: Restoration &



Photo: D. Dudley

One of the attractions of The Deanery for George, who is very keen on wildfowl, was the large pond & Shill Brook which border the garden. As well as peacocks, Snowy owls, pheasant & fish there are black swans - pictured above with 3 cygnets hatched in November.

A LOCAL PROFILE - INTERVIEW by Billy Count

I recently went to The Deanery to meet Deirdre and George Dudley, newcomers to Bampton, who bought the house in June 1990. "When we bought it, we didn't know if we were being wise or foolish" says George. The house needed extensive repair and renovation, so much so that they didn't actually move in until just before Christmas 1991. They first restored the cottage in the grounds and used that as a base whilst working on The Deanery itself.

The house needed repairs on the roof, re-wiring, new gutters and plumbing - a major project for most people but George and Deirdre went on to restore the house internally. The work has been a family enterprise with Deirdre's nephew helping as an expert in building work and her niece with interior design and decoration. As The Deanery is a grade II listed building advice and help has been given by Dr John Blair of Queen's College, Oxford and Mr Parkinson of West Oxfordshire District Council who deals with listed buildings. "The amount of help, and knowledge they passed on to us enabled us to restore rooms to their own period so, for example, the kitchen is a Victorian addition to the house while the cellars are medieval;" Deirdre explains. George showed me the cellars where John Blair had picked out previously blocked up arched windows. I was shown the fireplace that had been obscured by a rusting water tank; a bread oven was discovered and built back up to working

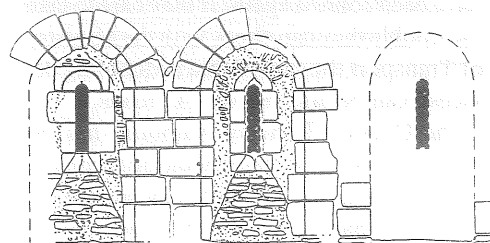
order, you can also see the curved indentation for heating cauldrons.

The cellar dates back to some time before 1069 when it was a chapel and was given to the Diocese of Exeter by Bishop Leofric and the Dudleys have a map dated 1317 which shows the big hall, where we sat in front of a flickering fire, and several large outbuildings and barns which have disappeared over the years. The Deanery remained the property of Exeter until the 1920's when it was bought by a Mr Douglas.

George runs an engineering business in Witney while Deirdre imports American motor homes, like the amazing Winnebagos one occasionally sees. They live with their two children, Gina 16 and 'mad about horses' and Dan 13 who loves fishing. They are practicing Christians and especially love the Church being used for both Roman Catholic and Anglican services, which they hadn't come across before. It reflects their own marriage as a symbol of Christian unity since Deirdre is a Roman Catholic and George an Anglican.

Despite their initial apprehensions about what they had taken on they have been very happy in Bampton. "There's no place like it in the whole of England," says Deirdre, "it is a wonderful community. There's a great spirit here, look at the way everyone helped with the appeal to restore the organ. And the Village Hall, Town Hall and Youth Centre just add to the feeling of community." Deirdre adds, "We've been made very welcome, everyone has been so friendly." Good for Bampton!

Exploration



The exceptional importance of the Deanery as an 11th and 12th century manor house was first realised in the mid 1980's. During the last year a total refurbishment by the new owners, Mr & Mrs Dudley, has revealed new features of interest and has made those that were already known more visible and comprehensible.

The earliest and most important part of the house is the south-western wing, which began as a two-storey range with three windows in its east end wall at basement level. These windows have now been unblocked and conserved, making it possible for the first time to examine them properly (see illustration). They are in an early Romanesque style unlikely to be later than about 1120 and perhaps built quite soon after the Norman Conquest. The room which they lit was probably the lower half of a two-storey 'double chapel', perhaps the building described as a 'chapel with a lower chamber' in a survey of 1317. This form of building is particularly associated with bishops' residences, and the chapel at the Deanery may

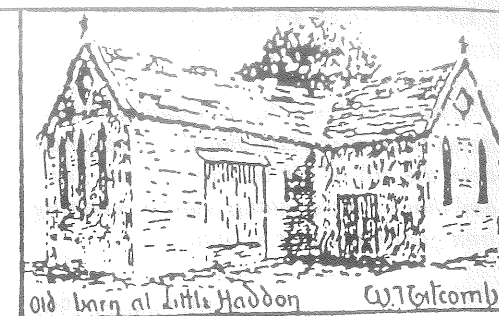
RECENT DISCOVERIES by Dr John Blair

well have been built by Bishop Robert of Hereford, the tenant named in Domesday Book (1086).

Later in the twelfth century, a massive domestic range was added to the north-east corner of the chapel, blocking off one of the three windows. It now seems likely that the basement had a barrel-vault, removed in the post-medieval period to allow room for an extra storey. The west end of this range was rebuilt in about 1200; the recent alterations have revealed the remains of the original entrance doorway, as well as a big lancet window which the Dudleys have exposed and restored.

A recent exciting discovery made in February 1992 is a prehistoric ditch, probably the ring-ditch of a Bronze Age barrow, which encircles the Deanery. Further developments are expected. This follows the intriguing find of a large artificial water course, now mostly filled in but surviving in places as the Deanery fishponds, which ran parallel with the Shill Brook. It is far too wide to have been a mill-lead, and is faced on the west side with a stone-rubble revetment. Could this be an early medieval canal - perhaps for carrying Taynton stone to the Thames?

The Deanery is certainly one of the most important medieval houses in the South Midlands. It is indeed fortunate that it has found such sympathetic owners, who are ensuring that future generations will be able to appreciate it.



Old barn at Little Haddon W.J. Galcomb

During research on Bampton and its hamlets for the Victoria History of Oxfordshire, the adjoining, very tantalizing illustration of a now-demolished barn at Lower Haddon has come to light. It appears in an obscure, anecdotal guide to the county called A Ramble in Oxfordshire, published in about 1926 by W.J. Monk, who in his commentary draws attention to its cruciform shape, the tall lancet windows and the crosses on the roofs, and suggests that it may have once been a church. Certainly, if taken at face value, it could well represent remains of an unknown 13th century chapel.

The building has been identified by a local inhabitant as the former 'Mill Barn', which stood about 360 yards south of Lower Haddon Farm near a copse where local children used to go primrosing. Unfortunately it seems to have been demolished around 1956 when the site was taken into Brize Norton airfield, and although some local people have confirmed its existence, no further illustrations have come to light; nor, most worryingly, does it appear on the early 19th century enclosure maps, which for Lower Haddon are the earliest wholly reliable ones to survive. Its appearance, on the other hand, hardly fits the otherwise obvious explanation that it was simply a field barn built in the early 19th century.

Does anyone remember the building, or, better still, know of any photographs or other illustrations? Although no documentary evidence has been found for a chapel here, there is now very clear evidence for pre-Reformation chapels at Lew and at Chimney as well as at Shifford, and the idea may not, therefore, be as bizarre as it at first seems. What does seem odd is that an abandoned (or rather re-used) medieval building could have lain only a few hundred yards from the road, unnoticed and unrecorded, into the 1950s, and any information would be very much appreciated.

Kindly send any information to:
Dr Simon Townley,
Victoria County History,
Clarendon Building, Bodleian Library,
Oxford OX1 3BG Tel: 0865 277238
(who would also be very grateful to hear from anyone with interesting deeds or other documents in their possession).



Gina, Deirdre, George and Dan Dudley

Photo: D. Dudley

**LIME TREES IN BROAD STREET
1902 to 1992**

It was noted in a Parish Council Minute dated December 1902 that these trees had been the gift of Mr George Gerring Jnr., and that each tree along with its retaining iron guard had cost 8/- apiece."

27th January 1992

Further to our recent public statement we wish to make it clear that it has never been the intention of the Parish Council to cut down the trees in Broad Street, but merely to inform and seek the opinions of local residents on all the options available. In their current state they considerably add to the beauty of Bampton providing an attractive entrance into the centre. However, the Parish Council feels that this shape can only be maintained by the 70 year old tradition of pollarding (ie having the whole crown cut off leaving the tree to send out new branches from the top of the stem). From evidence given by the West Oxfordshire District Council planning representative the Parish Council believes that the WODC is unlikely to allow this treatment.

The Parish Council has only recently found that these trees are technically the responsibility of the County Council because they are situated on an 'A' class highway. We have therefore discussed this matter with the County Engineer and his representatives. Currently they are negotiating with the District Council. The Parish Council fervently hopes that it can persuade the District Council to allow continued pollarding as it has done in Burford. In the interests of Bampton and the residents of Broad Street the Parish Council wishes to support and fund this treatment of the trees in Broad Street. If the District Council cannot be persuaded to allow us to follow this tradition, alternative treatment will fall annually and will cost considerably more and be far less effective than five yearly pollarding. This may mean that the only option may be to give the trees to the care of the County Council. The County Council has stated that due to its limited budget it will not do any maintenance to the trees unless they are dangerous and threatening to the highway and its users.

We hope this makes the situation clear, but if you still have any queries please do not hesitate to contact Pauline Ruff or Ralph Norman.

PARISH COUNCIL MINUTES 26.02.92
The Council will give the requisite 6 weeks notice of their intention to pollard some 8 lime trees on the western edge of Broad Street to the West Oxfordshire District Council.

PARISH COUNCIL NEWS

**SPEEDING TRAFFIC THROUGH
BRIDGE STREET**

Dear Madam, During the discussions a while ago regarding the possible installation of Sleeping Policemen in Bridge Street, I understand that the reason for not doing so was because it is an 'A' road. Surely, 'A' road or not, the speed limit for the village is 30 m.p.h. If the installation of this kind of restriction would restrict to 30 m.p.h. where does that put the excuse? We are of course being fobbed off with any old excuse. What is in fact being suggested is "The speed limit is 30 m.p.h. but we don't want to force you to keep to it".

Perhaps what is called for is a volunteer to be killed or seriously injured while crossing the road. May be, just may be, someone in authority would then start thinking about getting something done.

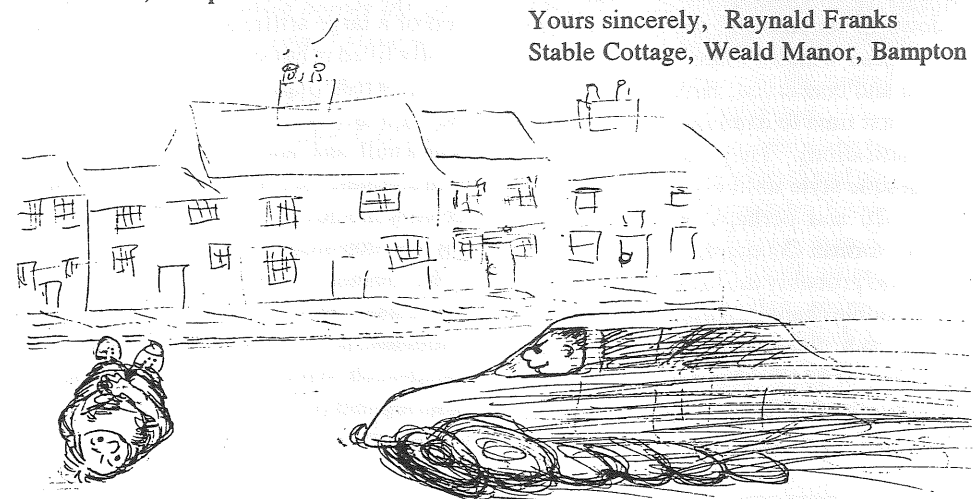
Yours faithfully, W.H.C. Mayhead
Castle Field, Bampton

Dear Editor, . . . Well! Our councillors have been conned again. If they care to take the trouble they can check with the Ministry of Transport the canard that no "cooling devices" can be allowed on 'A' roads.

The County Highway Authority has the last word and it is clear that the only consideration taken into account is the number of accidents that occur. On the road where I live we can only offer the death of all the cats which lived in the neighbourhood, and the total destruction of two cars. One of these was parked and empty, while from the other two boys escaped miraculously unhurt. We may improve on this, given time.

In some parishes they have been told they can have road humps if they pay for these themselves. The latest estimate given to me by the Ministry was £2000 per hump, and at that rate the whole of Bampton could be protected for an outlay of £50,000 if this idea about 'A' roads were overcome. . . .

Yours sincerely, Raynald Franks
Stable Cottage, Weald Manor, Bampton



**EXERPT FROM A LETTER to the Clerk of Bampton Parish Council
from Road Safety Manager of Oxfordshire County Council**

"You asked for a costing of a traffic calming scheme (road humps) in New Road, possibly to be funded by non-County Council funds. It would be necessary to install 8 humps in order to treat the full length of the road, costing £15,000. However if lighting is also needed this may add £20,000 to that total. If the length of the scheme was reduced so costs would fall. . . . I have also included Clanfield Road/Bridge Street for assessment for other traffic calming measures."

As usual the "assessment" came to nothing because of lack of "bodies"! Ed.

If you have views or ideas on traffic calming measures or the lime trees in Broad Street or any other matter affecting life in Bampton or wish to find out how the Parish Council deals with these matters, please come to:-

**THE
ANNUAL PARISH MEETING
in the Town Hall at 8.00pm
on Wednesday, 15th April 1992**

PARISH COUNCIL MINUTES 26.02.92

The County Highways Authority are to prepare a scheme which would allow for a mini roundabout at the junction of New Road with Broad Street/Witney Road. Possible introduction of traffic calming measures in the Buckland Road, and removal of the 30 mph sign further out in Aston Road.

McKenzie Brown

DOMESTIC & COMMERCIAL
HEATING - PLUMBING
ELECTRICAL WORK
INSTALLATIONS - ALTERATIONS
ELECTRICAL WIRING - Lighting & Power
OIL & GAS BOILER SERVICING
RAYBURN
AGA SPECIALIST (Aga trained)



TEL: BUCKLAND
(0367 87) 283

**BAMPTON FAX
BUREAU**

Call in and send a fax message or ask for details of special schemes

at

Emmie's

NEWSAGENTS

Bridge Street, Bampton Tel. 850467

Newspapers delivered anywhere in Bampton

PLUMBING & HEATING

Bathrooms,
Showers,
Kitchens,
Guttering,
Central Heating,
Lead Work

**24 Hr
EMERGENCY
SERVICE**



No Job Too Small!

**STEPHEN HAILES
PLUMBING
CARTERTON 840011**

M. H. THOMAS

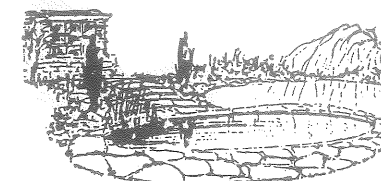
Building
Landscape Gardening
and
Fencing Contractor



ORNAMENTAL PONDS
ROCKERIES LAWNS
COMPLETE GARDEN LAYOUTS
TREE POLLARDING
PRIVACY, POST & RAIL
CLOSE BOARDED FENCING

For Competitive Quotations Ring
BAMPTON CASTLE 850937
1 Hill View, Lew
Bampton, Oxon.

SUPPLIERS OF
CUT FLOWERS
POT PLANTS
HANGING BASKETS
BEDDING PLANTS
SHRUBS
BOUQUETS, WREATHS,
ETC.



ALSO AT

BAMPTON MARKET
SATURDAY MORNINGS
ORDERS TAKEN

Screen Printing
Tote Bags Banners
Badges Rosettes
Ribbons Etc
Hot Foil Printing
Business Cards
Souvenir Items
Keyrings Bookmarks
Pens Bookmatches
To Your Design

HOME
MADE
LABRADOR

Telephone
Bampton Castle **851203**

J. Temple

Hardware, DIY
Fancy Goods & Toys
Market Sq., Bampton, Oxford
Telephone (0993) 850877

*"If you can't find it at Temple's,
you can probably get by
without it".*

R. Boland & Sons
Barn Farm, Buckland Road, Bampton.
For all your locally grown

**Fresh Fruit and
vegetables**

*Free local delivery. Open every day
including Sunday morning.*

Telephone: 851481 or
851247 (Richard Boland)
850127 (Alec Boland)

**Bampton
Driving School**

Dual Controls, Expert
Tuition, Approved ADI
Member MSA

Phone **0993 851344**

THE BUSH CLUB: Plans for the future

Wednesday has a special significance for many housebound and retired people in Bampton as it is their day out at the Bush Club. The Club meets in the 'Horsa' building behind the Youth Centre in Church View. The 40 or so members are looked after by a team of volunteer helpers who drive them to and from the centre, provide refreshments, a cooked mid-day meal, entertainment and special care, if required. When the Bush Club reopened after the Christmas and New Year break everyone was delighted to find the dining room and kitchen had been redecorated and other repairs had been carried out. To most members and carers it is business as usual with a few improvements, but the Bush Centre Executive committee is aware of a significant change.

Up until the end of 1991 the Bush Centre had been renting the premises on Wednesdays only from the Oxfordshire County Scouts who had a lease (from the County Council) on the building and the small paddock to the north of the Old Primary School. When the Scouts lease came to an end it seemed likely that Bampton could have yet another commercial housing development.

The Easter Story
from a display for The Bush Club
by Hilda Kent

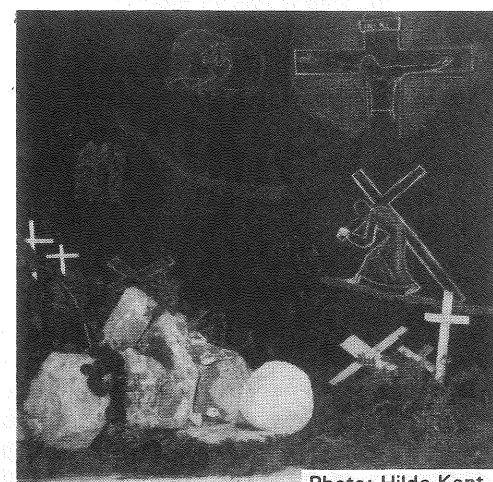


Photo: Hilda Kent

WANTED: SINGERS for ST. MARY'S CHURCH CHOIR

Last year the people of Bampton generously contributed towards the restoration costs of the historic Church organ and this has encouraged the Church Council to respond positively to several enquiries regarding membership of the Church Choir.

Bampton no longer has any organised group singing activity and, given sufficient support (sopranos, contraltos, tenors and basses are all required), Bampton's distin-

guished musician, Dr Bernard Rose, has agreed to assist with the reformation of an enlarged choir. Under his guidance and leadership it is hoped to achieve Church singing which will ensure that the restored organ is put to the best possible use and be worthy of our growing community. The commitment sought from members is to attend one service on Sunday at 10.30 am (approximately 1 hour) and initially, one

give an annual grant on a Service Agreement. The Bush Centre Executive Committee has been restructured to take on the financial problems and maintain a viable organisation. When not needed by The Bush Club the present building is being used by West Oxfordshire College for Adult Education Classes, by local organisations for whist drives, aerobics, and by the West Oxfordshire County Scouts. The Committee will be seeking to maximise the letting potential to cover all the running costs.

The Bush Centre Executive Committee

Mrs Colvile (Chairman), Mr Allport, Mrs Argles, Mrs Cobley, Mrs Peeler, Miss Inkster, Mrs Foresheaw, Mrs Newing, Mr Gascoigne, Mrs Gould & Mr Fowler (County Councillor)

EASTER SERVICES ST MARY'S CHURCH, BAMPTON

Palm Sunday 12th April
10.30am Parish Communion
(Bishop Burrough)

Maundy Thursday 16th April
7.30pm Holy Communion

Good Friday 17th April
10.30am Morning Prayer & Litany

Easter Day 19th April
9.00am Mass (Roman Catholic)
10.30am Parish Communion
3.00pm Baptism (at Clanfield)
6.00pm Parish Evensong (at Aston)

Aston schoolchildren entertain members of The Bush Club



Photo: Hilda Kent

Time to think about the vegetable patch - the onion sets and seeds are in the shop (up to 99p a packet instead of the 4d they used be!).



I am trying to cut down the work this Spring by not planting until late April. Last year, planting in March, my beautiful green rows were nipped by late frosts, inspite of my emptying the contents of the airing cupboard and covering the whole patch with sheets when I heard the frost forecast. Two exceptions - broad beans, which will survive frosts and garlic which needs a long season. I've had a row of cloches up over black plastic bags to warm the soil and I've planted garlic cloves straight from SPAR, 2 inches deep and 6 inches apart - I should get a 12 fold yield. I'm not going to bother with greens as last year they provided a feast for cabbage white butterfly caterpillars and later for a thick sludge of grey aphids. I'm still nurturing brussell sprouts which are only as big as peas. But I'll plant twice the number of onion sets which did really well. I've got one string left and I'm still eating parsnips straight from the garden and leeks - both

wonderful for soup and other dishes. Turnips were a waste of time last year - mine rotted before I could eat them - but I'll grow beetroot again. Those you can't eat freeze well for soups and the tops can be eaten like spinach. I've now got a row of perpetual spinach which I've been able to pick throughout winter so I won't bother with the annual variety. And I am going to grow a cut-and-come-again lettuce called Lollo Rossa which will save me having to think about consecutive planting.

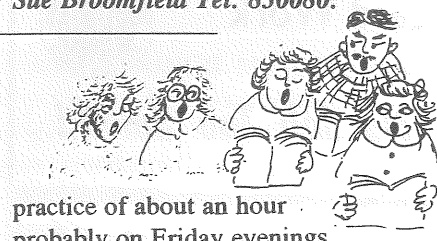
I'm trying an alternative tomato plant this year - called SWEET, it's a tiny cherry tomato which will not only do all right out doors but I'm told it looks so pretty it will save planting sweet peas. They'll grow against my shed - sunniest place in the garden. I found courgettes can make a delicious salad so I'm not bothering with cucumbers and I'll stick a marrow plant into my compost heap. Last year it did wonderfully with no attention. Earlier I used my compost heap as a "hot bed" - piled it with horse manure and placed a wooden box on top with a piece of bubble wrap over it. It made a good alternative to a green house for starting seeds and

A NEW SUNDAY SCHOOL

will start after Easter run jointly by parishioners of St Mary's Church and the Methodist Church in Bampton on Sundays during term-time (3rd May to 5th July incl.) at The Vicarage, 5 Deanery Court, Broad Street from 10.30 to 11.30am

Any child over 3 years may join by coming to The Vicarage on Sunday morning - from 10.20am. Our aim is for the children to learn the basics of the Christian faith and doctrine in an enjoyable environment with active participation and discussion.

For further information, please contact:
Tricia Ball Tel: 851731 or
Sue Broomfield Tel: 850080.



practice of about an hour probably on Friday evenings.

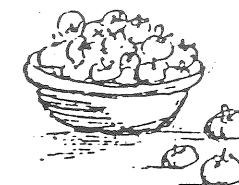
Casspcks/surplices will be provided. Those interested are asked to contact the Churchwardens: Dr Alan Gaydon, 3 Broad Street Tel: 850882 or Mrs Judy Devas, 22 The Lanes Tel: 851424

The Garden Column: Comments & Contributions Welcome

nurturing young plants and the manure improved the compost heap ready for the marrow plant. You don't have a compost heap? Well, shame on you!!

PARSNIP SOUP

Scrape and cut up 2 parsnips. Cover with water, bring to the boil and simmer for 20 minutes. Liquidize together with cooking water. Chop 1 medium onion and lightly fry in a small amount of butter or olive oil and add to liquidized parsnips with a stock cube, 1/2 tsp cumin seeds and 1/2 tsp curry powder. Serve with spoonful of yoghurt or sour cream and a little chopped parsley.



Electric Vehicles Ltd

Moonraker Lane, Market Square, Bampton, Oxon OX8 2JH

THE ELECTRIC VEHICLE SPECIALISTS

- * Regular routine maintenance
- * 24-hour emergency breakdown service
- * Spare parts for most makes of vehicle from stock
- * Service exchange units (diffs, motors, steering boxes)
- * Replacement batteries and chargers
- * Body repairs and rebuilding facility
- * New and used vehicle sales department
- * Charger and battery service facility
- * Electronic control specialists

ALL AT COMPETITIVE PRICES

For details telephone WITNEY (0993) 850714/850025



MEMBER

(1418)

BAMPTON VILLAGE HALL

The Management Committee will complete the major restoration of the hall when replacement windows are fitted in the summer. The work will be a lasting memorial to Frances Cole whose friends and colleagues contributed so generously at the time of her death. Further redecoration was carried out in January and lightweight tables have replaced some of the old heavy boards and trestles. Lettings income and 250 Club proceeds sadly do not cover the upkeep and running costs. However, thanks to the generous covenanted donations which many people still pay, the hall was solvent in 1991. If you feel you could help in any way, please come to

THE ANNUAL GENERAL MEETING in The Village Hall on Wednesday, 29th April at 7.30pm

BAMPTON ENVIRONMENTAL WATCH GROUP

The 2nd AGM on January 28th 1992 was attended by around 50 members. 4 serving officers and 6 members of the Executive Committee were re-elected as well as Margaret Howse and Gilbert Marsh. The formal business was followed by an amusing and instructive demonstration of spinning, weaving and dyeing by the Hon. Sec. wearing her other hat.

Future Open Meetings:

29th April 7.30pm at Bampton Primary School - a presentation of the school's environment programme by children & teachers.

29th July 8.00pm in the Village Hall - a lecture on the history of Bampton in the 17th & 18th centuries by Dr Simon Townley, Victoria County History of Oxfordshire. Guests welcome - £1.00 entrance.

Recent activities:

Through the indefatigable efforts of a founder member, BEWG has assisted in the preservation of an ecologically valuable hedge bordering the site of the Low-cost Housing project. In addition to researching the history of the hedge and ditch Elaine Townsend logged the wide range of its plant and animal life and mobilised local residents to express their concern that this unique corner of Bampton should not be lost. (see 'Hedging Your Bets' in the Low -Cost Housing Supplement)

BEWG welcomes new members concerned about environmental issues affecting Bampton and its vicinity. *For further information contact Ann Norman Tel: 850523*

BAMPTON YOUTH CENTRE

The Youth Centre occupies the premises of the Old Primary School in Church View. Apart from accommodating the Youth Club, the Scouts and the Cubs, the Centre is regularly let out for other community and social events. With a large main hall and ample parking space, the Centre is ideal for the larger party and has a Public Entertainment License for up to 100 people.

For further information contact:

Youth Club

Chris Connaughton Tel: 850010

Cubs & Scouts

Leslie Harrison Tel: 773916

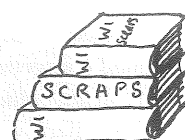
Paul Tomlin Tel: 843942

Mrs B Heaton Tel: 706020

Hire of Hall Liz Banham Tel: 850019

General enquiries

Colin Allport Tel: 850411



BAMPTON W.I.

MISLAID - Women's Institute Scrap Books - any information gladly received by - Jean Howell (President) Tel: 850684

THE MS SOCIETY

West Oxfordshire Branch

25th April Annual General Meeting

2.00pm at Burwell Hall, Witney Election of Committee will be followed by a talk on 'Toys through the Ages' by Mr & Mrs Hickman

If anyone would like to join the committee, please send nomination by 4th April to: Jill Cooper (Hon. Sec.)

102 Woodstock Road, Witney OX8 6DY

THE BAMPTON BUSH CLUB

The Club is run by volunteers for the retired elderly of Bampton and surrounding district. It is held each Wednesday, 10.00am to 2.30pm at the Scout Training Centre (behind the Youth Centre), Church View, Bampton.

If you would like to join either as a helper or as a member or know someone who would benefit, you will be most welcome to come along for a visit.

It is a very good place to renew old friendships and meet new people.

For more information contact:

Mrs Granville Tel: 850407 or

Mrs Argles Tel: 850991 who will be happy to help you.

Notice

Please submit items for the Notice together with a pr

BAMPTON SWIMMING POOL APPEAL

Did you help to build the swimming pool at Bampton Primary School? Do your children currently benefit from the pool? Did you know it is in danger of being closed? It would be a great pity, but unless volunteers and funds can be found, this may well be the case.

Despite a series of fund raising events the Appeal is still not half way to the target of £5000.

Further events are planned as follows:-

8th April - A Guitar Trio Concert (works by Clapton, Grieg and many others) in the School Hall at 7.30pm

Tickets: £4.00, concessions £2.00.

26th April - A Recital at Weald Manor by Raymond Burley (guitar) and Jacqueline Fox (mezzo-soprano) at 7.30pm.

Tickets: £12 including supper with wine. Tickets for both events available from the Cotton Club, Rosemary Lane, Bampton Tel: 851234 or 850793.

4th May - A Tombola Stall at the May Day Street Fair

9th May - A Sponsored Non-Stop Music Marathon

in The Village Hall at which The Grand Spring Raffle will be drawn. **26th June** -The ever popular children's concert in the School Hall.

Also planned is A "Pop" Quiz in which teams test their knowledge of various forms of music, date to be arranged.

If you cannot support any of the above events but wish to help the Appeal, please send a donation to the Primary School marked "Pool Donation".

If you prefer to make a loan to the Appeal, please contact Linden Burley Tel: 850793. Anyone may hire the pool for private use by becoming a member of the Swimming Pool Club. Further details available from Linden Burley Tel: 850793

BAMPTON BROWNIES

Mrs Jenny Izzard, Bampton District Commissioner, invites any girls aged 7 to 10 years who want to become Brownies to join the pack at Standlake which meets in Standlake Village Hall on Thursdays from 6.00 to 7.00pm. There is still a great need for enthusiastic adults to help with Guides and Brownies in the district.

LOW-COST HOUSING SUPPLEMENT



From Appraisal to Action



'The appraisal questionnaire (1982/85) asked whether people would welcome the expansion of the Newsheet into a general Bampton newsletter. Well over half the respondents said they would . . . ' The first issue of The Bampton Beam was published in March 1986.

In August 1988 (Vol.3, No.2) the front page headline was 'We can't afford it' with the subtitle 'House prices in Bampton force the next generation out.' Only two people responded to that article but in the December issue their letters were printed together with a form to be filled out. The response was enormous and proved, to the amazement of the local housing authority, that there was a desperate need for housing for the young people of Bampton whose fami-

lies had their roots here and without whom the local community would lose its heritage and identity.

By March 1989 the Parish Council was actively involved in seeking suitable land and help with setting up a housing scheme to meet the needs of those who had filled in the lengthy questionnaire (published and distributed by The Bampton Beam). Sadly, there have been many delays and the front page headline of December 1989 'Happy Christmas 1991' proved to be over optimistic but, with luck, there will be new homes by Christmas 1992!

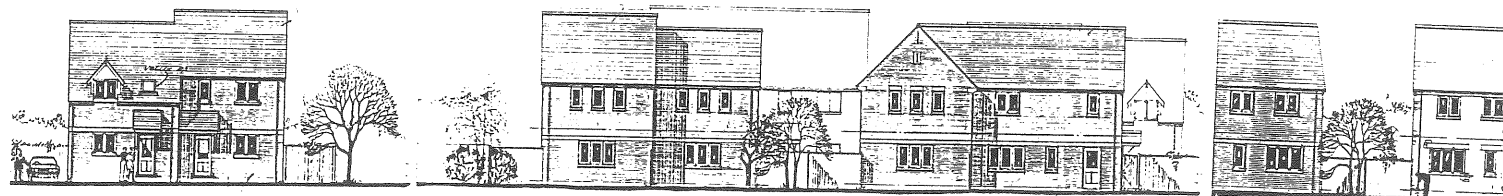
The Appraisal saw the need for subsidised housing, the Bampton Beam publicised and proved the need, the Parish Council with help from other statutory authorities, the County Councillor and our

M.P. Douglas Hurd, have undertaken to solve the need.

Unfortunately, the local housing authority is West Oxfordshire District Council which sees the need for homes as a district problem and does not take into consideration the social need of housing young people in their own home village. They have already imposed conditions on the Parish Council (called a 106 Agreement) in return for providing some of the much needed finance. It is to be hoped in the future that the needs of Bamptonians will be given priority in Bampton.

The first scheme is now being built but the need to replace the lost Council houses will continue so efforts to find suitable land and financial assistance must go on.

Many lessons have been learned; lets put them to good use!



Advice from David Ashmore:

HOUSING APPLICANTS PLEASE NOTE

After over two years of research, campaigning and detailed negotiations, the social housing scheme aimed at providing a range of rented and shared equity housing for local people finally got underway on 17th February. The scheme is being built by Fisher & Townsend (Contractors) Ltd. to a scheme originally conceived and designed by the Coleman Hicks Partnership a firm of architects from Kidlington with experience in rural housing schemes.

In this housing development of private, rented and shared-equity housing the 12 houses for sale on the open market will be built on land which belonged to the Parish Council. The money from the sale of this land plus the profit from the houses will subsidise the rented accommodation. 31 low-cost homes are being built comprising: 4 x 1 bedroom flats, 13 x 2 bedroom houses, 12 x 3 bedroom houses, 2 x 4 bedroom houses 24 of the homes will be

available to rent, with the remainder available for purchase on a shared equity basis.

The scheme has only been able to go ahead because of the commitment and energy of a number of people working in different agencies. A great deal of credit is due to the Bampton Parish Council under the very active Chairmanship of Mrs Jackie Allinson, with a number of other local people working busily, often behind the scenes, on publicity and survey work, proving the need for housing that exists in the local community.

Funding for the scheme has come from a number of agencies including Bampton Parish Council, West Oxfordshire District Council, Oxfordshire County Council and the Housing Corporation which supervises the work of local Housing Associations.

Oxford Citizens Housing Association has played the role of co-ordinating the funding and development process and ensuring the wishes of the Parish Council are met whilst dealing with the legal and management responsibilities that accompany the public money being made available.

* * * * *

The final details of how applicants for the housing will be selected are currently under discussion. **It is vital that everyone registers if they have not already done so.** Oxford Citizens Housing Association has a large number of applications on file and will be getting in touch with everyone in the next few weeks but -

HAVE YOU CHANGED YOUR ADDRESS?

If we don't have your correct address, we cannot contact you!

It is important that anyone who has submitted an application to Oxford Citizens Housing Association (or intends so to do) also registers on the Housing List with West Oxfordshire District Council.

OXFORD CITIZENS HOUSING ASSOCIATION LTD.
2nd floor, Northway Centre,
Maltfield Road, Headington,
Oxford OX3 9RG Tel: 0865 66633

Editor wishes to thank the following
 for their generous sponsorship of
The Bampton Beam
 LOW-COST HOUSING SUPPLEMENT

RIDGE & PARTNERS

CHARTERED SURVEYORS
 QUANTITY SURVEYORS
 BUILDING SURVEYORS
 PROJECT MANAGERS

COLEMAN HICKS PARTNERSHIP architects

- BUILDING DESIGN
- PROJECT MANAGEMENT
- PLANNING & COST CONSULTANCY
- INTERIOR DESIGN

Fisher & Townsend (Contractors) Ltd

Building Contractors
 AILEY, WITNEY, OXON.
 OX8 5TX

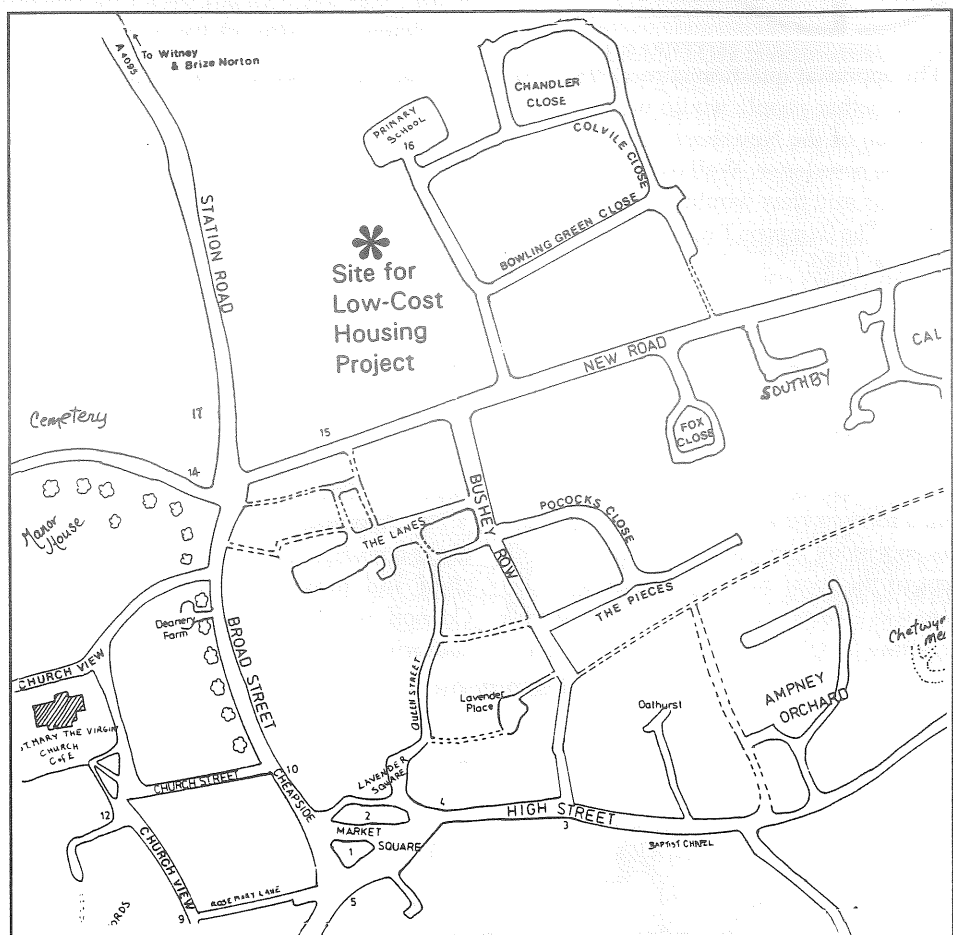
Types of building and joinery work undertaken from repairs
 and maintenance to large Housing Estates, Schools
 and Industrial Premises.

Specialists in renovation and extension of natural stone
 properties in the Cotswolds
 also
 types of alterations, decorations, bar and back fittings
 to Hotels and Public Houses.

Prices and Estimates:
 0993 776395
 Telephone:
 0993 773911
 (hot lines)



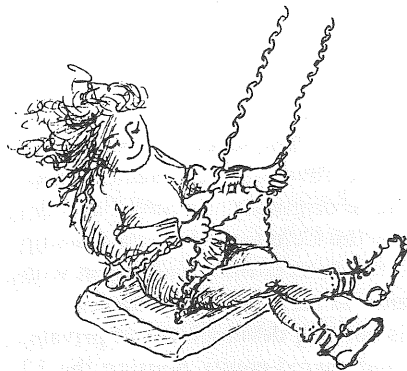
SKETCH MAP OF BAMPTON



ALL BAMPTON CHILDREN Will benefit from the newly equipped Playground

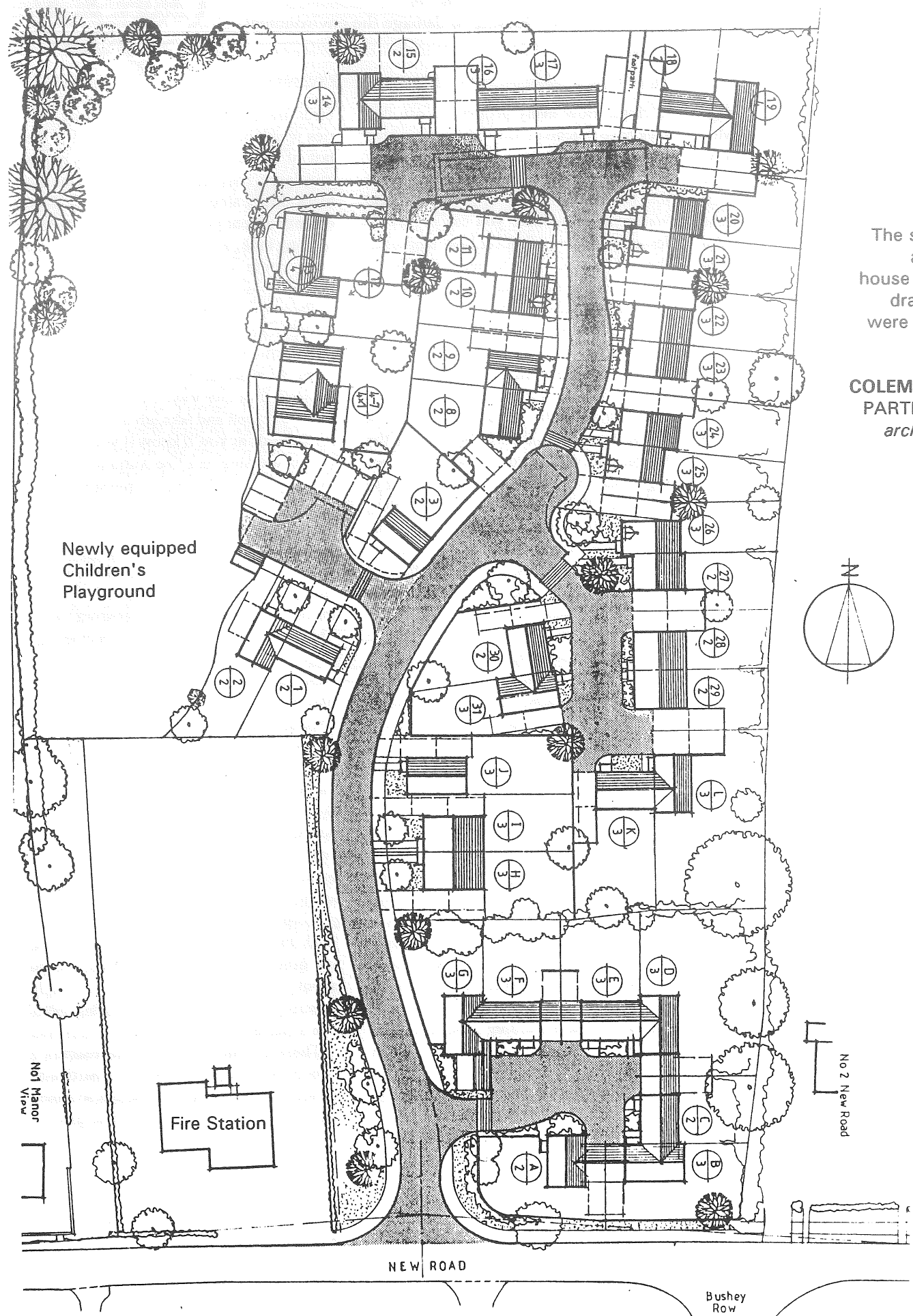
Thanks to the Low-Cost Housing Scheme the neglected and derelict playground off New Road will be resited and re-equipped. It certainly wouldn't have happened in any other way. Following an article in The Bampton Beam in August 1990 "RENOVATING BAMPTON'S PLAYGROUND for the next VILLAGE VENTURES?" in which the Parish Council Public Grounds sub-committee sought to enlist the help of parishioners, there was not one single idea or offer of help!! Self-help of this kind is not very popular in Bampton.

Happily the Parish Council is now able to commission Wicksteed Leisure of Kettering, Northants to design a playground that will cater for the needs of both toddlers and older children. The proposed equipment includes climbing frames, slides, swings, whirling platforms and a goal post in the Junior Area for budding football stars.



The equipment will be installed with a surrounding area of thick red safety tiles. The cost will be in the region of £32,000. Lets hope that many generations of Bampton children will enjoy this safe and stimulating play area and that it will not suffer from the scourge of vandalism.

SITE PLAN FOR LOW-COST HOUSING SCHEME



The site plan and house elevation drawings were supplied by

COLEMAN HICKS PARTNERSHIP architects

HEDGE YOUR BETS by Elaine Townsend

There is no need for Low-Cost Housing to damage the environment.

Dad said "You'll never do it. It belongs to the Council and they'll do with it what they want to!" He was of course referring to a particular piece of hedgrow due to be uprooted. "Do you want a bet?" I answered. "That hedge means a lot to some people." I did some research and found it was at least 330 years old. I wrote to BBONT and CPRE who were most helpful, confirming the age of the hedge and the amount of wildlife found there. I heard people say "What a shame they're pulling it out." I also heard people say "What about that old hedge by the playing field in New Road? Why don't they get rid of the tatty thing?" Well, it's obvious to me that they don't live near enough to it to encounter its many joys

As the Seasons change so does this wonder of nature in my back garden. We have several kinds of tree and bush which give a variety of green hues as spring progresses to summer. This together with the plants and insects they encourage bring different types of bird. The crab apple brings bullfinches in spring when the flower buds come. Other birds begin to build nests beginning with the blue tits and going on through to blackbirds, thrushes, robins, hedge sparrows and wrens to mention a few. Nests are built and the first eggs are laid. This is when the stoat or weasel are more in evidence. Their favourite food being eggs and baby birds. A bit gruesome but a necessary part of the chain. They have their charm too as they tumble and play on your lawn in the twilight with their playful squeaks and trills.

On a lighter note to see a crab-apple tree in full bloom is a really beautiful sight. Large cream coloured blossoms fading to pink and almost red in such profusion as to put one in mind of a huge water fall of colour, and the smell as you walk past is heavenly. Even the elder flower has a strong pungent smell which is unique and pleasing to ones senses.

At this time we also hear the cuckoo with its clear sweet voice telling us that summer

is close. How many people can say that they have watched a baby cuckoo being fed by its foster parents and grow to maturity in their own back garden. I can, thanks to that tatty bit of hedge. If you sit still and watch in the summer you can observe a lesser spotted woodpecker busy tapping at the soft bark of a tree to find grubs for its babies back in a hole somewhere. The tree creeper too finds its food in crevices of the bark. But to catch this bird at work needs more careful observation.

In the summer when the birds are at their busiest the sparrowhawk is a regular visitor, on the hunt for an easy meal amongst the many species (at least 28) that use the hedge. And what better on a warm summer night than to be lulled to sleep listening to owls call. Then to wake up in the morning to collared doves cooing to each other. The owls come looking for voles, shrews and even frogs that frequent the hedge finding safety, dampness and shade in the dense foliage.

Summer is getting tired now and we've watched the young blackbirds learning to find worms. The thrush teaching its young to wrinkle out snails, using the same stone to hit them on until there is a huge pile of empty shells on my rockery. We have heard Jenny Wren telling her large family it is time to take their first flight. Now its time for other visitors. The thistles have started to shed their fluffy heads which along with the dandelions and groundsel bring goldfinches hopping and diving into the garden. Never in ones or twos but fives or sixes. We also have long-tailed tits at this time of year who with their rosy glow and beautiful tails look almost like birds of paradise. Hedgehogs are getting more daring in their search for something good to eat and can be heard snuffling about after dark feeding up for a long sleep.

Autumn is here now and the leaves on the different trees are changing colour rapidly. Some change steadily from green to yellow to gold. Others are more erratic with green, gold, red and brown all on one stem. The

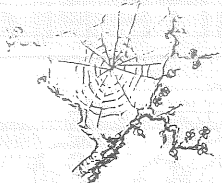
birds are now interested in the many berries which have turned a bright red in the last of the summer sun. The crab-apples look large, rosy and as juicy now as the big black dusky sloe. Although both of these make excellent jelly don't be fooled by that inviting look, as, if you bite into either one your mouth will feel as though its been turned insideout. However, all is not lost as there are an abundance of blackberries of different varieties entwined through the hedge which are ready now, some of these being as sweet as the best summer strawberries in their own way. The small mammals know this well and take advantage. So too do the birds as you'll know if your've ever put out washing on a fine Autumn day only to bring it in with a big purple splodge on it!

When this time of plenty is over and the harvest is home, things slow down a pace. Frost makes cobwebs look like jewelled strings and the snow, when it comes, makes the trees look full of blossom again. This is the time that the fieldfare come. like large fluffy thrushes with pinky brown waistcoats on. They sit together in the trees like fruit ready for picking.

We are very lucky to have the variety of colour, shape and sounds on our small island with its difficult climate, let alone so many in one hedge! Oh, I forgot to mention the fox. He of course is up and down the hedge regularly using it as a roadway all year long, but is perhaps easiest seen in the winter when food is short and the leaves are gone. He is a handsome fellow with his pricked up ears, long straight back and thick bushy tail. But one doesn't need to see him to feel his presence, as you go about your business evening or early morning, knowing he is watching gives one a sense of belonging.

These are just some of the reasons a bunch of ordinary people in a particular location decided to try to save a so called tatty old hedge at the end of their gardens

and WE WON!



From Appraisal to Action



'The appraisal questionnaire (1982/85) asked whether people would welcome the expansion of the Newsheet into a general Bampton newsletter. Well over half the respondents said they would . . . ' The first issue of The Bampton Beam was published in March 1986.

In August 1988 (Vol.3, No.2) the front page headline was 'We can't afford it' with the subtitle 'House prices in Bampton force the next generation out.' Only two people responded to that article but in the December issue their letters were printed together with a form to be filled out. The response was enormous and proved, to the amazement of the local housing authority, that there was a desperate need for housing for the young people of Bampton whose fami-

lies had their roots here and without whom the local community would lose its heritage and identity.

By March 1989 the Parish Council was actively involved in seeking suitable land and help with setting up a housing scheme to meet the needs of those who had filled in the lengthy questionnaire (published and distributed by The Bampton Beam). Sadly, there have been many delays and the front page headline of December 1989 'Happy Christmas 1991' proved to be over optimistic but, with luck, there will be new homes by Christmas 1992!

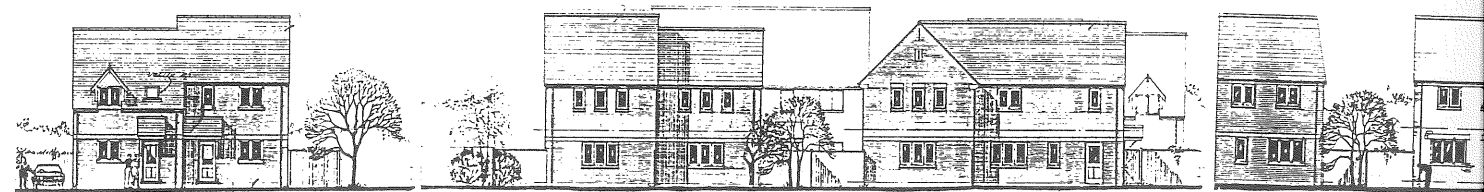
The Appraisal saw the need for subsidised housing, the Bampton Beam publicised and proved the need, the Parish Council with help from other statutory authorities, the County Councillor and our

M.P. Douglas Hurd, have undertaken to solve the need.

Unfortunately, the local housing authority is West Oxfordshire District Council which sees the need for homes as a district problem and does not take into consideration the social need of housing young people in their own home village. They have already imposed conditions on the Parish Council (called a 106 Agreement) in return for providing some of the much needed finance. It is to be hoped in the future that the needs of Bamptonians will be given priority in Bampton.

The first scheme is now being built but the need to replace the lost Council houses will continue so efforts to find suitable land and financial assistance must go on.

Many lessons have been learned; lets put them to good use!



Advice from David Ashmore:

HOUSING APPLICANTS PLEASE NOTE

After over two years of research, campaigning and detailed negotiations, the social housing scheme aimed at providing a range of rented and shared equity housing for local people finally got underway on 17th February. The scheme is being built by Fisher & Townsend (Contractors) Ltd. to a scheme originally conceived and designed by the Coleman Hicks Partnership a firm of architects from Kidlington with experience in rural housing schemes.

In this housing development of private, rented and shared-equity housing the 12 houses for sale on the open market will be built on land which belonged to the Parish Council. The money from the sale of this land plus the profit from the houses will subsidise the rented accommodation. 31 low-cost homes are being built comprising: 4 x 1 bedroom flats, 13 x 2 bedroom houses, 12 x 3 bedroom houses, 2 x 4 bedroom houses 24 of the homes will be

available to rent, with the remainder available for purchase on a shared equity basis.

The scheme has only been able to go ahead because of the commitment and energy of a number of people working in different agencies. A great deal of credit is due to the Bampton Parish Council under the very active Chairmanship of Mrs Jackie Allinson, with a number of other local people working busily, often behind the scenes, on publicity and survey work, proving the need for housing that exists in the local community.

Funding for the scheme has come from a number of agencies including Bampton Parish Council, West Oxfordshire District Council, Oxfordshire County Council and the Housing Corporation which supervises the work of local Housing Associations.

Oxford Citizens Housing Association has played the role of co-ordinating the funding and development process and ensuring the wishes of the Parish Council are met whilst dealing with the legal and management responsibilities that accompany the public money being made available.

The final details of how applicants for the housing will be selected are currently under discussion. It is vital that everyone registers if they have not already done so. Oxford Citizens Housing Association has a large number of applications on file and will be getting in touch with everyone in the next few weeks but -

HAVE YOU CHANGED YOUR ADDRESS?

If we don't have your correct address, we cannot contact you!

It is important that anyone who has submitted an application to Oxford Citizens Housing Association (or intends so to do) also registers on the Housing List with West Oxfordshire District Council.

OXFORD CITIZENS HOUSING ASSOCIATION LTD.
2nd floor, Northway Centre,
Maltfield Road, Headington,
Oxford OX3 9RG Tel: 0865 66633

The Editor wishes to thank the following firms for their generous sponsorship of **The Bampton Beam** LOW-COST HOUSING SUPPLEMENT

RIDGE & PARTNERS
 CHARTERED SURVEYORS
 QUANTITY SURVEYORS
 BUILDING SURVEYORS
 PROJECT MANAGERS

COLEMAN HICKS PARTNERSHIP architects

- BUILDING DESIGN
- PROJECT MANAGEMENT
- PLANNING & COST CONSULTANCY
- INTERIOR DESIGN

Fisher & Townsend (Contractors) Ltd
 Building Contractors
 BAILEY, WITNEY, OXON.
 OX8 5TX

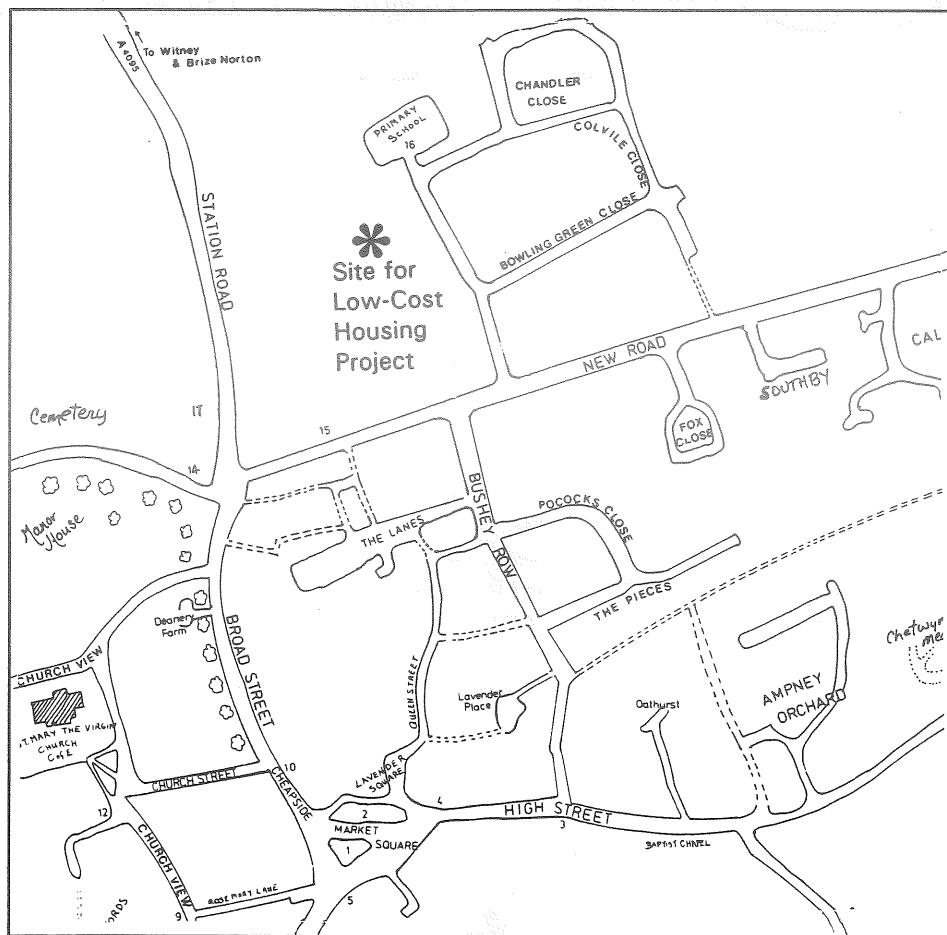
Types of building and joinery work undertaken from repairs and maintenance to large Housing Estates, Schools and Industrial Premises.

Specialists in renovation and extension of natural stone properties in the Cotswolds also

All types of alterations, decorations, bar and back fittings to Hotels and Public Houses.

Enquiries and Estimates:
 Tel: 0993 776395
 Telephone: 093 773911
 (night lines)

SKETCH MAP OF BAMPTON



ALL BAMPTON CHILDREN Will benefit from the newly equipped Playground

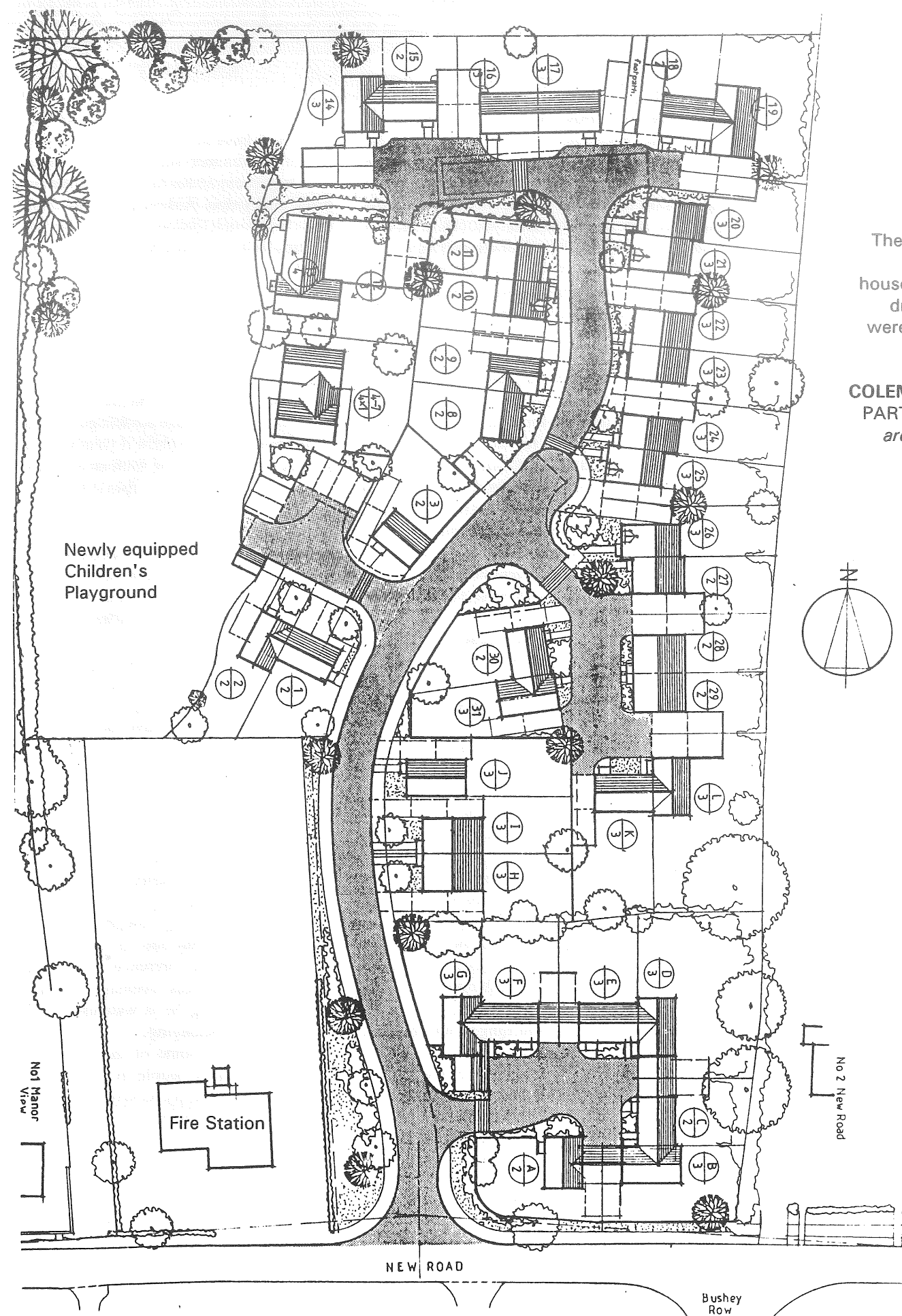
Thanks to the Low-Cost Housing Scheme the neglected and derelict playground off New Road will be resited and re-equipped. It certainly wouldn't have happened in any other way. Following an article in *The Bampton Beam* in August 1990 "RENOVATING BAMPTON'S PLAYGROUND for the next VILLAGE VENTURES?" in which the Parish Council Public Grounds sub-committee sought to enlist the help of parishioners, there was not one single idea or offer of help!! Self-help of this kind is not very popular in Bampton.

Happily the Parish Council is now able to commission Wicksteed Leisure of Kettering, Northants to design a playground that will cater for the needs of both toddlers and older children. The proposed equipment includes climbing frames, slides, swings, whirling platforms and a goal post in the Junior Area for budding football stars.



The equipment will be installed with a surrounding area of thick red safety tiles. The cost will be in the region of £32,000. Lets hope that many generations of Bampton children will enjoy this safe and stimulating play area and that it will not suffer from the scourge of vandalism.

SITE PLAN FOR LOW-COST HOUSING SCHEME

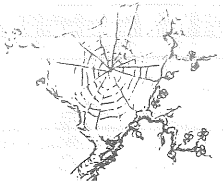


The site plan and house elevation drawings were supplied by

COLEMAN HICKS PARTNERSHIP architects

HEDGE YOUR BETS by Elaine Townsend

There is no need for Low-Cost Housing to damage the environment.



Dad said "You'll never do it. It belongs to the Council and they'll do with it what they want to!" He was of course referring to a particular piece of hedgrow due to be uprooted. "Do you want a bet?" I answered. "That hedge means a lot to some people." I did some research and found it was at least 330 years old. I wrote to BBONT and CPRE who were most helpful, confirming the age of the hedge and the amount of wildlife found there. I heard people say "What a shame they're pulling it out." I also heard people say "What about that old hedge by the playing field in New Road? Why don't they get rid of the tatty thing?" Well, it's obvious to me that they don't live near enough to it to encounter its many joys

As the Seasons change so does this wonder of nature in my back garden. We have several kinds of tree and bush which give a variety of green hues as spring progresses to summer. This together with the plants and insects they encourage bring different types of bird. The crab apple brings bullfinches in spring when the flower buds come. Other birds begin to build nests beginning with the blue tits and going on through to blackbirds, thrushes, robins, hedge sparrows and wrens to mention a few. Nests are built and the first eggs are laid. This is when the stoat or weasel are more in evidence. Their favourite food being eggs and baby birds. A bit gruesome but a necessary part of the chain. They have their charm too as they tumble and play on your lawn in the twilight with their playful squeaks and trills.

On a lighter note to see a crab-apple tree in full bloom is a really beautiful sight. Large cream coloured blossoms fading to pink and almost red in such profusion as to put one in mind of a huge water fall of colour, and the smell as you walk past is heavenly. Even the elder flower has a strong pungent smell which is unique and cleansing to ones senses.

At this time we also hear the cuckoo with its clear sweet voice telling us that summer

is close. How many people can say that they have watched a baby cuckoo being fed by its foster parents and grow to maturity in their own back garden. I can, thanks to that tatty bit of hedge. If you sit still and watch in the summer you can observe a lesser spotted woodpecker busy tapping at the soft bark of a tree to find grubs for its babies back in a hole somewhere. The tree creeper too finds its food in crevices of the bark. But to catch this bird at work needs more careful observation.

In the summer when the birds are at their busiest the sparrowhawk is a regular visitor, on the hunt for an easy meal amongst the many species (at least 28) that use the hedge. And what better on a warm summer night than to be lulled to sleep listening to owls call. Then to wake up in the morning to collared doves cooing to each other. The owls come looking for voles, shrews and even frogs that frequent the hedge finding safety, dampness and shade in the dense foliage.

Summer is getting tired now and we've watched the young blackbirds learning to find worms. The thrush teaching its young to wrinkle out snails, using the same stone to hit them on until there is a huge pile of empty shells on my rockery. We have heard Jenny Wren telling her large family it is time to take their first flight. Now its time for other visitors. The thistles have started to shed their fluffy heads which along with the dandelions and groundsel bring goldfinches hopping and diving into the garden. Never in ones or twos but fives or sixes. We also have long-tailed tits at this time of year who with their rosy glow and beautiful tails look almost like birds of paradise. Hedgehogs are getting more daring in their search for something good to eat and can be heard snuffling about after dark feeding up for a long sleep.

Autumn is here now and the leaves on the different trees are changing colour rapidly. Some change steadily from green to yellow to gold. Others are more erratic with green, gold, red and brown all on one stem. The

birds are now interested in the many berries which have turned a bright red in the last of the summer sun. The crab-apples look large, rosy and as juicy now as the big black dusky sloe. Although both of these make excellent jelly don't be fooled by that inviting look, as, if you bite into either one your mouth will feel as though its been turned insideout. However, all is not lost as there are an abundance of blackberries of different varieties entwined through the hedge which are ready now, some of these being as sweet as the best summer strawberries in their own way. The small mammals know this well and take advantage. So too do the birds as you'll know if your've ever put out washing on a fine Autumn day only to bring it in with a big purple splodge on it!

When this time of plenty is over and the harvest is home, things slow down a pace. Frost makes cobwebs look like jewelled strings and the snow, when it comes, makes the trees look full of blossom again. This is the time that the fieldfare come. like large fluffy thrushes with pinky brown waistcoats on. They sit together in the trees like fruit ready for picking.

We are very lucky to have the variety of colour, shape and sounds on our small island-with its difficult climate, let alone so many in one hedge! Oh, I forgot to mention the fox. He of course is up and down the hedge regularly using it as a roadway all year long, but is perhaps easiest seen in the winter when food is short and the leaves are gone. He is a handsome fellow with his pricked up ears, long straight back and thick bushy tail. But one doesn't need to see him to feel his presence, as you go about your business evening or early morning, knowing he is watching gives one a sense of belonging.

These are just some of the reasons a bunch of ordinary people in a particular location decided to try to save a so called tatty old hedge at the end of their gardens

and WE WON!

Board



Board page in a sealed envelope - payment of £1.50

OXFORD COLLEGE OF FURTHER EDUCATION

FOUR DAY ENTERPRISE START UP COURSE builds up the skills needed to plan, set up and run a business successfully. The course is subsidised by the Training and Enterprise Council with a small charge of £50 (£10 if you're unemployed). Courses start 27 April, 4 & 29 June.

BUSINESS SEMINARS are aimed at newcomers to business and those who wish to develop their business skills.

- Book-keeping - 5 June
 - Finance for Survival - 19 June
 - Time & Crisis Management - 3 July
 - Practical Market Research - 2 April
 - Marketing your Business - 1 May
 - Promoting & Selling - 15 May
- Further information from Sue Brough, Small Business Centre Manager
Tel: 0865 716171

BAMPTON HORTICULTURAL SOCIETY

- 25th April - Coffee Morning and Bring & Buy Sale at 18 The Pieces
- 4th May - Plant Stall at Street Fair
- 25th May, Spring Bank Holiday - GRAND VILLAGE FETE at Sandfords Field - Car Boot Sale, Morris Dancing, Children's Amusements, Fancy Dress, Teas, Raffle and A GRAND DOG SHOW. (A donation will be given to Support for the Sick Newborn & Parents, The Baby Unit, John Radcliffe Hospital)
- 18th July - Coffee Morning at The Town Hall 10.00am to 12.00
- 8th August - MAIN FLOWER SHOW in The Village Hall

THE ROYAL BRITISH LEGION POPPY APPEAL 1991

The Local Organiser, Mrs Yvette Brown, wishes to thank everyone in Bampton and Lew for their donation to the Appeal which amounted to £1269.45; special thanks to the volunteers of the Street Collection - it is not always an easy task, but very worthwhile!

BAMPTON PUMPKIN CLUB

Elected Officers 1992:-
President: Dor Thomson Tel: 850206
Chairman: Max Norman Tel: 844591
Treasurer: Jim Gascoigne Tel: 850119
Secretary: Carol Claxton Tel: 851428
The Committee would like to thank everyone who supported the Club last year and enabled 392 pensioners to benefit.

Forthcoming Events:

Easter Saturday 18th April 2.00pm
EASTER BONNET PARADE
in the Market Square
Monday, 4th May 10.00am to 5.00pm
STREET FAIR
Entries include "Nigel the Clown" - Dog Show - Street Stalls - Tombola - Raffle - Morris Dancing & Bar-B-Q
Prizes for Raffle and Tombola would be much appreciated and should be given to Dor Thomson or Jim Gascoigne

BAMPTON WIVES CLUB

Meetings on the 3rd Wednesday of each month in the Village Hall unless otherwise stated, starting at 8.00pm.
Members £5 per annum; Guests £1
15th April Visit to -
Spinnages Dried Flowers
20th May Talk about The Blue Cross
17th June Visit to Friars Court
For further information Tel: 851206

S.P.A.J.E.R.'S.

40th SHIRT RACE - Saturday 23rd May
Fancy Dress Competition
at The Jubilee 6.15pm
Junior & Intermediate Race 7.15pm start
Senior Race 7.30pm start
Plus various other attractions!

BAMPTON PRE-SCHOOL PLAY-GROUP

Sessions for 3 - 5 year olds are held in our own building between 9.15 & 11.45am on weekdays during school terms. To put your child's name on our register or find out more please contact Carol Howard Tel: 850588.
A Treasure Hunt open to anyone will be held on Wednesday, 8th April. Fun for all the family and you do not have to know Bampton well to solve the clues. Meet at Playgroup Building (behind the Primary School) at 2.00pm. Refreshments available on your return. Only £1.50 per family

BAMPTON DRAMA GROUP 1991-92

1991 saw fewer productions than usual; our actors were, as they say, 'resting' and deservedly so, after an exhausting schedule in 1990. The group was, however, far from idle and among other activities enjoyed a Barn Dance and a pleasant evening presenting 'gobbets' of Shakespeare on the lawns of Weald Manor, thanks to Major and Mrs Colville.

Two of our members took part in a production of 'The Merry Wives of Windsor' by the newly formed Cotswold Arcadians. Peter Murray from the Watermill Theatre in Newbury ran a 'page to stage' workshop for us on all aspects of production and organised a very enjoyable musical evening to show members, despite all their protestations, that they can sing! Peter also gave invaluable advice on the direction of Tom Stoppard's 'The Real Inspector Hound', our Autumn production much enjoyed by audience, cast and crew.

To break the tradition of the annual pantomime, we presented a revue, 'The Lime Street Broads'. Apart from the songs, all material was original and touched on local, national and international issues, giving considerable free publicity to a local supermarket in the process! The revue format proves to be very popular with our audiences and may well be repeated.

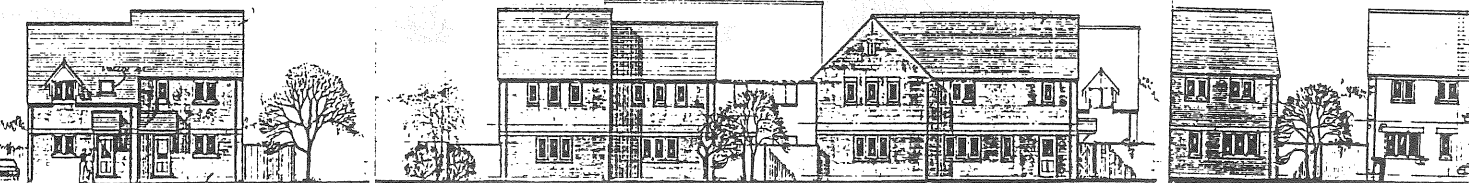
The two one-act plays in May directed by Pauline Ruff with entirely female casts, will relieve our overworked male actors and allow more women members to be on stage. A further production is planned for October - Bampton Drama Group is very much back in action! As for post New Year 1993, who knows? Panto? Revue? Ice Extravaganza? The suspense must be unbearable!

We would be delighted, as always, to welcome as new members, anyone new to the village or who has not as yet found time to join us. We need people interested in acting, production, back stage or front of house work. Do join the fun! Contact our Membership Secretary - Mollie Martingell Tel: 851199

FORTHCOMING ATTRACTION

There could be -
'A Slight Misunderstanding'
in the Village Hall
May 14, 15, & 16 at 8.00pm
but everything will be all right because -
'Darlings, You Were Wonderful!'
Tickets: £3 from The Cotton Club,
Rosemary Lane Tel: 851234

If you would like to help in any way, please contact: Pauline Ruff Tel: 851503



Arts Page



Maureen Wilsker & Jo Lewington
(who gave you the "Paradise Garden"

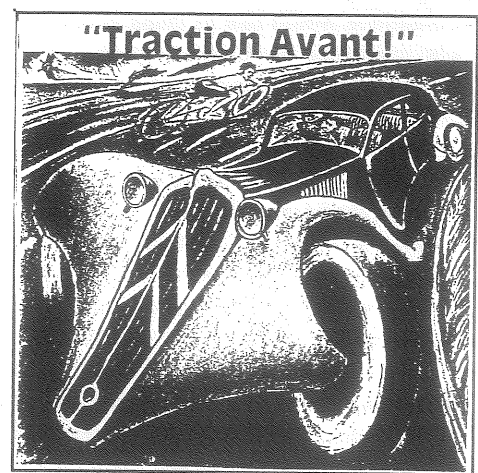
last year), are planning a new exhibition in late April. It will be held in Jo's garden at Sandford Cottage and there will be pots & plaques, birds, huge frogs & other surprises. Watch out for the posters.

'FLORA'

An exhibition of flower paintings will be on show at The Gallery, The Town Hall, Bampton as part of the OXFORD ART WEEK May 16th to 31st

ART CLASSES

at The Studio, Little Place, Bampton Delightful & informal setting. Beginners to Advanced are welcome. Annual Members' Exhibition. For more details please contact the class Tutor: Paul Nicholls MA(RCA) The Old Barn, Holwell, Burford, Oxon OX18 4JS Tel: 0993 82 2116



wide and signed copies will be available at the exhibition.

The WEST OXFORDSHIRE ARTS ASSOCIATION presents a dynamic exhibition of drawings, pastels and prints by West Oxfordshire artist Paul R.P. Nicholls MA(RCA) on the subject of "Speed" which covers 20 years of work by the artist. Subject matter includes automobiles, aeroplanes and boats plus wooden toys made by the artist. The images offer a variety of treatment and method, some humorous, some serious. Paul has included drawings carried out in response to the Gulf War which powerfully evoke the mayhem and devastation of the convoys in retreat on the road to Basra. Works range from small pencil drawings to large pastels; also 3 limited edition prints including this whacky picture of a Maigret Citroen at Speed - this print has sold world-

from **The Address** given by Barry Webb at the service held in Radley College Chapel on the 11th January 1992 to commemorate the life and work of

Charles McCord Mussett

One of the many remarkable things about Charlie was that everybody seemed to know him - even more remarkable was that everybody seemed to know him very well. . . Charlie's openness made everyone feel that their relationship with him was special: and it was, because Charlie made sure it was. During the ten weeks that Charlie was in hospital last year, nearly one hundred different people visited him (many several times) and over fifty more wrote, phoned or sent gifts. For a bachelor with no family in this country that tells its own story. . . .

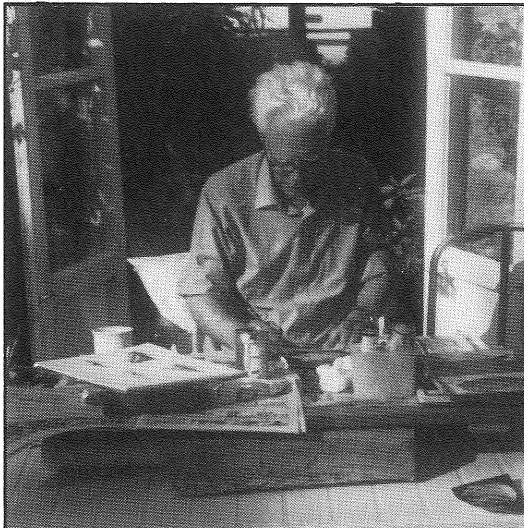


Photo: Barry Webb

The artist at work in his garden

Born and brought up in Memphis, Tennessee, he was endowed with southern American characteristics: courtesy, hospitality, a respect for authority and hard work. . . . After coming to England in 1953, he travelled widely - He then took stock of his travels and chose Oxfordshire as his home. He loved its unpretentious but delicate landscape, its warm stone - above all, its lack of organised tidiness. The recent loss of hedges and natural meadows distressed him intensely.

person in front of him in a shop was a huge queue - but he retained also his American good manners. He was welcome in so many homes; welcome everywhere. . . . He managed to become a very rare hybrid: a truly American, truly English gentleman.

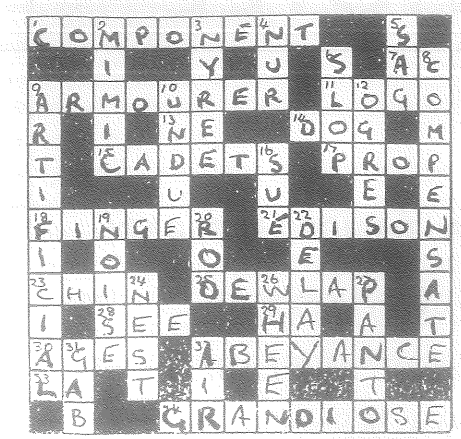
He never surrendered his American passport; he never lost his accent - yet he became distinctly English. He remained baffled by the English tolerance of inefficiency; but he was enchanted by village life. He retained his American impatience - to him, one

After the sudden death of his friend Peter Stucley, Charlie needed employment. In 1964 he applied to Radley and was appointed as an Art teacher to fill in for a term. He stayed for 23 years - . . . (when he retired)

He wanted to be quiet at 'Little Weald' - gardening and painting, with a bit of travel thrown in. But there were to be other calls on his time. Some twenty years earlier, together with John and Margaret Birkhead he had helped to found the West Oxfordshire Arts Association. It had thrived, with a highly active gallery in the Town Hall at Bampton and a wide range of artistic activity. They needed a new Chairman; they needed funds; Charlie accepted the challenge and worked tirelessly on their behalf. He founded a trust fund, which became a memorial to the Birkheads; he tried to make the Arts Council take more note of rural areas. He organised a wonderful concert with the King's singers in Bampton church; a memorable Shakespearean evening in Buscot Park. Charlie treated W.O.A.A. like a pupil who needed nurturing, and with great success. However, by early 1991 he had run out of energy. . . .

It was time for his last journey. Throughout the last difficult months, Charlie remained Charlie: always more concerned for his visitors than for himself. At his request, his ashes were scattered in the churchyard of Broughton Poggs Church. It was a beautiful cold, sunny, frosty morning. Charlie would have loved it; he would have painted it.

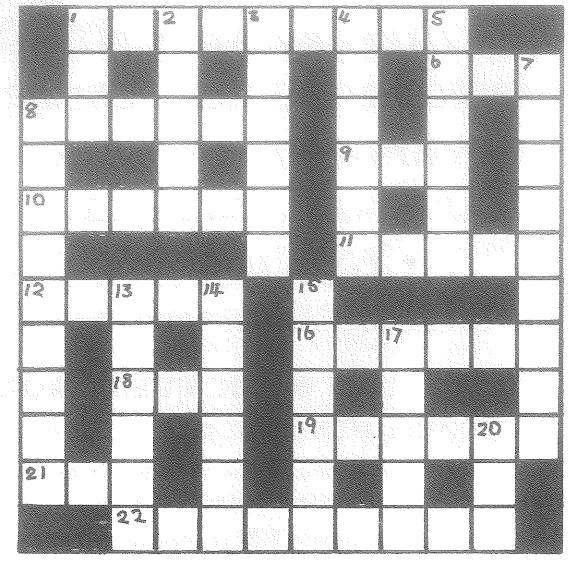
Solution to BEAM PRIZE CROSSWORD December 1991



Correct solutions received from:- Gerald Pickford, Bampton Mr R J Terry, Bampton Mrs E MacDonald, Bampton Mrs A Marsh, Bampton **The £5 prize has been won by Gerald Pickford** (There were 2 ambiguous clues 14 Across DOG/HOG 31 Down GAB/GAS acceptable)

The Bampton Beam's Own Prize Crossword

£5 Donation to Cancer Relief MacMillan Fund in memory of Les Caddy £5 Cash Prize for the first correct puzzle opened on 15th May 1992.



- CLUES ACROSS**
- 1 Inflexible
 - 6 Reptile
 - 8 Flow
 - 9 Grain
 - 10 Requiem
 - 11 Fresco
 - 12 Vessel
 - 16 Rotors
 - 18 One
 - 19 Honorarium
 - 21 Nee
 - 22 Runner
- CLUES DOWN**
- 1 Missing
 - 2 Location
 - 3 Injects
 - 4 Flowing
 - 5 Church Festival
 - 7 Deprived of Power
 - 8 Choice
 - 13 Trimmer
 - 14 Medicine
 - 15 Stiffen
 - 17 Boudoir
 - 20 Grain

The solution will be published in the next issue; if you can't wait until then, send a sae with your entry to The Editor, The Bampton Beam, c/o The Cotton Club, Bampton.

Junior Beam

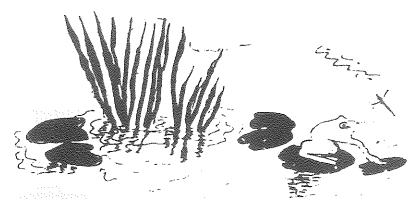
Number 2 August 1992

Children of all ages invited to send in contributions for The Bampton Beam Junior Supplement to be published in the summer.

Drawings, Poems, Stories, Games etc. and Letters to The Editor saying what you love about Bampton or what you hate most!

We look forward to hearing from you.

Deadline Date - 5th June



R. COOPER

BUILDERS — PAINTERS — DECORATORS
CARPENTRY — JOINERY — GENERAL REPAIRS
SPECIALISTS IN DRY STONE WALLING

Phone:
CARTERTON 842444

THE TALBOT HOTEL RESTAURANT & BARS

MARKET SQUARE, BAMPTON IN THE BUSH OX18 2HA Tel: (0993) 850326

- OPEN ALL YEAR ROUND • PATIO GARDENS AT REAR
- CHILDREN WELCOME - SPECIAL CHILDREN'S MENU AVAILABLE
- SUNDAY LUNCH • EXTENSIVE BAR SNACKS
- A LA CARTE MENU AVAILABLE IN THE RESTAURANT
- PIZZA TAKE AWAY SERVICE

OR JUST CALL IN FOR A QUIET DRINK

LIVE MUSIC EVERY MONTH

ACCOMMODATION AVAILABLE - WITH PRIVATE FACILITIES

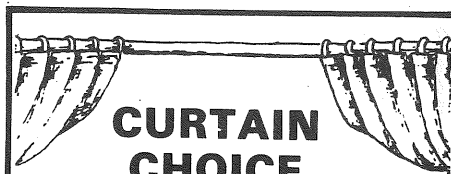
ALL ROOMS CENTRALLY HEATED WITH COLOUR T.V.,

TEA AND COFFEE MAKING FACILITIES

FIRE CERTIFICATES AWARDED



A.A.
LISTED



**CURTAIN
CHOICE**

Made to Measure Curtains
Alterations and Accessories
Your Material or Samples Available
Fast Door to Door Service

ADVICE AND ESTIMATES FREE
CARTERTON 841368



The Cottage
Market Square
Bampton Oxon
Telephone 0993 851550

- ☞ Homeopathic Remedies
- ☞ Photographic
- ☞ Health Foods
- ☞ Baby Care
- ☞ Medicines
- ☞ Cosmetics
- ☞ Toiletries
- ☞ Perfumes
- ☞ Gifts

J. Godfrey & Son
(EST 1906)

**FUNERAL
DIRECTORS**

TEL BUCKLAND
036787 210 or 655

FOR A DAY & NIGHT CARING,
PERSONAL SERVICE

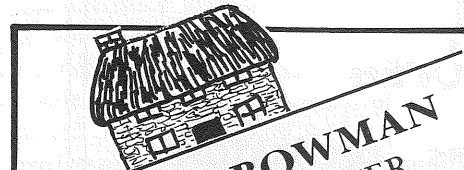
MARTIN DREW
MSSCh MBChA.

CHIROPODIST

38 COTE ROAD
ASTON
OXFORDSHIRE

Tel: (0993) 850547
(mobile) 0836 246203

HOME VISITS



ANDREW BOWMAN
MASTER THATCHER

HEDGEFIELDS FARM
BAMPTON
Telephone (0993) 850116

Member Oxon, Berks and Bucks
Master thatchers Association

MEDICAL MATTERS

OXFORDSHIRE COMMUNITY CARE PLAN 1992/93

The NHS & Community Care Act 1990 requires every local authority, Social Services Department in England and Wales to produce a Community Care Plan annually, starting in April 1992.

Every parish council has recently received a summary of Oxfordshire's Plan. It gives information on population and who needs care in our communities; how care is funded and planned; what services exist and what are planned. It includes an invitation to anyone interested to become involved in planning for care in the community.

Great emphasis is being placed on planning and consultation within communities and this is being co-ordinated by Social Services divisions. . . . Anybody interested in becoming involved in the process or would like to know more about community care in general should contact their local Community Care Planning co-ordinator -

BAMPTON (West Oxfordshire)
Rod More O'Ferrall,
Deputy Divisional Director,
11a High Street, Witney OX8 6LW
Tel: 704517

PAINLESS SURGICAL OPERATIONS AT BAMPTON

from JACKSON'S JOURNAL 1847 -
kindly sent to *The Editor*

by *Mrs Dorothy Wise of Clanfield*

"To the Editor. Dear Sir, I have just returned from the Metropolis (where I witnessed) . . . the use of the vapour of aether in alleviating, indeed wholly removing the pain of surgical operations. Stanley Stokes, Surgeon Dentist." . . .

"On Thursday last Mch 4th, E.T. Whitaker Esq, surgeon of this town (*Bampton*), performed the first operation in it (assisted by R.B. Newhouse Esq.) under the influence of ether.

The patient, a young man, aged 20, a farmer's labourer, applied to have the second molar tooth of the upper jaw removed, and upon it being represented to him that it could be extracted without pain, he freely consented to undergo the process.

The ether was accordingly administered from an apparatus, constructed by Mr. Newhouse and in less than three minutes the patient was completely letheonized; when Mr Whitaker opened his mouth and lanced



the gum and extracted a large molar tooth with three fangs, without the knowledge of, or the slightest pain to, the young man.

Upon being questioned as to his sensations at the time, he described in his own words 'as pleasant dreams about summat he didn't know what' but said he felt no pain and seemed much delighted at his good fortune saying 'he shouldn't mind having ever so many teeth out in that 'ere fashion.' Not the slightest unpleasant symptom occurred, the patient going off to plough immediately afterwards. The operation proved most satisfactory and conclusive to both Mr Whitaker and his assistant."

Dr. John Reynolds, MB BS MRCP
Fiona Williams, MCSP
Philippa Rayne, DO MRO
Andrew Fisher, DPofM SRCh
Lesley Mellin Dip. Arom. A.H.N.

**CENTRE
FOR
COMPLEMENTARY
MEDICINE**

above the Dental Surgery
**MOONRAKER LANE
BAMPTON**

SPORTS INJURY SPECIALIST
PHYSIOTHERAPY
OSTEOPATHY
ACUPUNCTURE
PODIATRY
AROMATHERAPY
REFLEXOLOGY

Telephone:
Bampton Castle 851359
Carterton 843636



IS YOUR BLADDER AS FIT AS YOU? CAMPAIGN FOR CONTINENCE

Posters are currently displayed in public places giving information and whom to contact for help.

Bampton

Health Visitor Tel: 850934 (+ Ans/phone)
District Nurse Tel: 851997 (+ Ans/phone)

Carterton

Health Visitor Tel: 840341 (+ Ans/phone)

Burford

Health Visitor Tel: 823521 (+ Ans/phone)
District Nurse Tel: 823718 (+ Ans/phone)

QUALIFIED CHIROPODIST

Paul van Aardt
MSSCh MBChA

Registered Member of the
British Chiropody Association

Free Consultation

Tel: 0993 843583

Visiting Practitioner - By Appointment

Stress incontinence is the involuntary leakage of urine during normal activities of living e.g. sneezing, laughing, coughing, and carrying heavy shopping, and during exercise.

It can cause much psychological and social distress. Many women suffer from this problem and do not realise help is available to remedy it.



Happy Memories

Following the article in the last issue, The Editor was delighted to receive a number of letters and reminiscences from those who were Guides and Brownies in Bampton before 1950.

from **Gladys John of Hay-on-Wye**

My memory of the Bampton Guides goes back to 1920 when Miss L. Nettlefold who lived at Bampton Manor started a company after our parents had been to a public meeting at the Town Hall. I was so pleased that I was just 11 and was able to join as it was something entirely different to anything I had done before. I do not remember that she had anybody to help her . . .

We held our meetings in the top room of the old Grammar School a part that had definitely been out of bounds previously although we had been in the bottom part for cookery lessons taken by Mrs Gordon.

It is a pity that there is nobody to continue the good work but there are not the 'ladies of leisure' that there were when I was a child. . .

I was most interested in Emmie's son he is a great credit to her.

Long may the magazine continue.

from **Mrs Bixter (nee Gillett) who lived at "The Haven", Buckland Road**

I enjoyed reading about The Bampton Girl Guides, there was certainly a group before 1950. I went for a while and I would have been 37 in 1950, a bit old for the Guides!

The vicar's daughter from Aston was the Lieut, I'm not sure who the Captain was, it could have been Mr Busby's daughter (Dora Unwins), the Lieut name was Preedy, we had three patrols - The Robins, Canaries and Swallows. . . I reckon I was about 10 years old when I belonged.

from **Mrs Freda Bradley (nee Daniels)**

I remember we used to have our meetings upstairs in the Old Grammar School (Library). The patrols had a corner each in the room - I was in the Robins . . . When I was in the Girl Guides we made the triangle garden just inside the Church gate, it must have been 1937, 38 or 39 as I was 13 years old when the war broke out. Edna Hunt (Hirons) was a guide at the same time, others that I remember have moved away.

CORRECTION to photo caption in last issue
Remembrance Sunday 1950
Ann Spurrett, Dinah Dafter (colour bearer) & Elizabeth Loveridge

from **Mrs Daphne Barrand (nee Tanner) of Abingdon**

I was a Guide in Bampton during the War years. We moved to Bampton in 1939, my father being of an old village family, the Tanners. My mother still lives in the village aged 92.

Our Guide Captain was Emmy Papworth and we used to meet in the Old Grammar School and sometimes in the summer we met for drilling in the gardens of Weald Manor. I was the Nightingale Patrol Leader and also standard bearer for Church parades. Once we attended a rally in the grounds of Christ Church college, Oxford. Guides came from all over the area to march past Lady Baden Powell. I carried the placard for the south division, I remember it rained and the lettering ran. Afterwards we went to meet her at the Town Hall.

I have one tatty photograph of some of us doing a house to house collecton for paper salvage to help the war effort.



The people in the photograph are as follows to the best of my recollection: Starting from the left, The girl with the ribbon in her hair was an evacuee. Next to her was Brown Owl (name forgotten). I am seated on the handle of the cart. Next to me standing is Joan Peyman (her father was the Station Master). Behind her is Emmy Papworth, Captain. The small face in front of Emmy I cannot remember, neither the person behind Brown Owl. The girl right at the top, half out of the photo is Kathleen Robinson, her mother lived in the village until she died just a year or two ago.

The district commissioner was a Mrs Canadine, the Rector of Alvescot's wife. We used to go to the Rectory for a days 'camping', lighting fires and cooking etc. as real camping was not allowed during the war.

from **Mrs Ruth Wheeler (nee Shergold)**

I would like to add a little information as to when the 1st Brownies were started in Bampton. I think I am right in saying that in 1938 Miss Susan Gillman who lived with her mother, Lady Gillman and her sister Kitty at Bampton Manor, started the first pack and was Brown Owl until she left the village. I was 7 years old and was able to join with 23 other girls. We had our meeting in The Manor, in the big play room. (which I believe now is the Drawing Room). Miss Cowper who was the cookery teacher at the school was our Tawny Owl and we had some very happy times. My first trip to a Pantomime was with the Brownies and we went to Oxford to see 'Mother Goose' I remember well the Dame calling out "Are the 24 little Brownies from Bampton here?" and we all stood up looking very proud in our uniforms. Sadly after Lady Gillman moved away we then had our meeting in the Old Grammar School the room at the top with Miss Cowper as our Brown Owl.

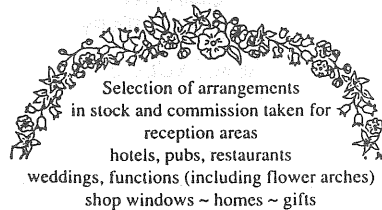
A letter to Mrs Jenny Izzard (Bampton District Commissioner) from Mrs Joye Beckett (nee Long) Victoria, Australia
I was in the Girl Guides from 1927 - 1931. Our meetings were held in the Old Grammar School which I think is now a library. Our Lieutenant was a Ruth Preedy, the vicar's daughter from Aston, and the late Mrs Jack Green of Bampton was also involved. On occasions we visited Eynsham Hall the home of Lady Evelyn Mason, at that time.

I have also written to Mr Morton as I was able to tell him the other people in the magazine on page 8. There were only 3 I wasn't sure of. 9 of them were my relatives, all of them deceased now except the little girl down the front in the white dress and panama hat, she was my sister (Eileen Long) 9 years old at that time, she was 7 years younger than me. We are both widows now and she lives in Yorkshire.

A Tisket-a-Tasket

DRIED & SILK FLOWER DESIGN

Introducing Present Perfect postal gift service



PLEASE PHONE BAMPTON CASTLE (0993) 850483 or 851803

A. SIMMONDS

Market Square, Bampton Tel: 850204
The Old Fashioned Village Store

Traditionally Baked Bread & Cakes

Groceries, Confectionery, Toiletries

Whole Foods

Large Range of Pet Foods & Requisites

FREE LOCAL DELIVERIES

E. TAYLOR & SON

Funeral Directors

Established 1885

Personal Service

- Complete Funeral Services
- Private Chapel of Rest
- Day and Night Service
- All kinds of monumental work carried out

19 CORBETT ROAD, CARTERTON OX8 3LG

Telephone:

Carterton 842421 or 844205 Witney 702123 (day-time)

GREY GABLES GARAGE

CURBRIDGE, WITNEY, OXFORD OX8 7PD
TELEPHONE: WITNEY 702609

NEW SKODA DEALER

New & Used Cars
of other makes available

MOT and garage repairs

SKODA - FIRST FOR VALUE

AA



RAC

N. WOODLEY BUILDING MAINTENANCE

Small Extensions Built
Roof Tiles And Ridges Replaced
Patios And Garden Walls Built
Electrical, Plumbing And Carpentry
Work Undertaken

COMPETITIVE RATES

20 NEW ROAD, BAMPTON TEL. (0993) 850753

WITNEY GRASS CUTTING SERVICES

78 DARK LANE, WITNEY
TEL: HERBY ON 0993 775447



Heating Problems? Have no Fear
Quick and expert help is near!
Oil Fired Systems are just the thing
Especially when maintained by King!

John King
Avia Boiler Care

Phone:- Bampton Castle 851371
(24hr Answer Phone)

THE ROMANY INN

17th Century Freehouse

BRIDGE STREET,
BAMPTON, OXON

Telephone: 0993 850 237

SEPARATE DINING ROOM

3 Course Sunday Lunch
£5.25

Soup of the Day Pate Maison
Melon Florida Cocktail

Roast Beef with Yorkshire Pudding
Roast Lamb or Roast Chicken
Trout Meuniere

Served with Boiled & Roast Potatoes
and Vegetables of the Season

Apple Pie & Cream Pears & Cream
Sherry Trifle Peach Melba
Gateau Ice Cream

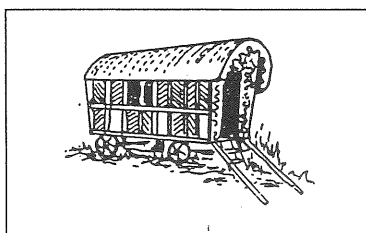
3 Course Menu -
Monday to Thursday
£5.25

Florida Cocktail or Pate Maison
or Whitebait or Mushrooms & Cheese

Sirloin Steak 6oz or Plaice 6/7oz
or Braised Pork Chop 8oz
or Roast Chicken

Served with Potatoes & Vegetables of the Day

Homemade Apple Pie or Gateau
or Pears & Cream or Cheese & Biscuits



FAMILY BEER GARDEN
play area for children including
Enchanted Tree, Mushroom, See Saw

Good Homemade Food at Sensible Prices

Bar Menu served 7 days a week
lunchtime and evenings

Homemade Dishes - Chilli Con Carne,
Beef Curry, Chicken Curry, Lasagne,
Shepherds Pie, Chicken & Mushroom Pie,
Steak & Mushroom Pie, Steak & Kidney Pie
plus Lams Liver, Braised Pork Chops, Steaks,
Roast Chicken, Plaice, Haddock, Scampi,
Trout, Omelettes, Gammon Steak and more.

All served with a choice of potatoes
and a choice of fresh vegetables

PRIVATE FUNCTIONS
up to 30 people catered for

Recommended by the
GOOD BEER GUIDE and the **GOOD
FOOD GUIDE**

Accommodation - Recommended by the
Sunday Times - quality letting rooms
Double Rooms with vanity sink (2 persons)
£25.00 per night incl. VAT
Brand New Double Rooms En Suite
£36.00 per night with full English Breakfast

THE BAMPTON BEAM

is published three times a year and
distributed free to all residents in
Bampton.

Extra copies available from the Post
Office & The Cotton Club.

EDITOR:

Susan Phillips Tel: 850321

SUB-EDITORS:

Billy Count, Jinnie Brown, Jo Lewington

ADVERTISING:

Billy Count Tel: 850085

DISTRIBUTION:

Kari Rossie Tel: 850764

Contributions are welcome at any time
and should be sent to:-

The Editor, c/o The Cotton Club,
Rosemary Lane, Bampton OX18 2JJ

DEADLINE DATES FOR COPY
5th March, July & November 1992

While every effort is made to ensure the
accuracy of information printed in *The
Bampton Beam*, the editor & publishers
cannot accept any responsibility for the
consequences of any error that may
occur. The views expressed in *The
Bampton Beam* are not necessarily those
of the Editor. Personal views are the
responsibility of the author in each case.

The Editor would like to thank ORCC
for a grant from The Rural Initiatives
Fund made possible by a generous
donation from Mr & Mrs J.A. Pye's
Charitable Settlement.

THE BAMPTON BEAM
is printed on
Recycled Paper



THE BAMPTON DIRECTORY

The Bampton Directory 1991 needs to be updated and reprinted but unless
reliable help is offered, it may not be possible to carry out the task.

What help is required?

1. Someone to check all the statutory information.
2. Someone to contact organisations etc. and correct information.
3. Someone to compile an up-to-date Business Directory.
4. Someone to help with advertising.

The work will need to be done in June or September 1992.

If you could offer a few hours at this time, please contact:

Mrs Susan Phillips Tel: 850321

If you would like to advertise in The Directory, please contact:

Mrs Billy Count Tel: 850085



Need a costume for that
Fancy-Dress Party?

Don't forget

**Bampton Drama Group's
New**

Costume Hire Service.

A wide selection of items on offer at
very reasonable rates.

Illustrated catalogue available soon.

Karaoke machine for hire shortly.

Bampton Drama Group

can help make your party swing!

Contact: **Pauline Ruff**
Tel: 851503 (after 6.00pm)