

# Houses running out

JUST five houses remain for sale on a new development in West Oxfordshire.

Two four-bedroom and three five-bedroom homes are still available on the Oakwood Gate estate in Bampton.

Housebuilder CALA Homes said ongoing repairs to the site should now be completed.

---

January 30<sup>th</sup> 2019

News

f Like us at facebook.com/  
witneygazettet Follow us  
@witneygazetteW Visit our website  
witneygazette.co.uk@ Email us  
news@nqo.comCall our newsdesk  
on 01865 425500

# Residents want answers about estate

James Roberts

james.roberts@oxfordmail.co.uk

**DISGRUNTLED** homeowners have called for answers following a series of issues on a housing estate derided as 'a complete mess'.

Residents first moved into Oakwood Gate in Bampton, West Oxfordshire, in December 2016, but have since suffered from power cuts, snow entering their homes, and the same areas of pavement undergoing repeated repairs.

Meanwhile, a footpath connecting the estate to Bampton C of E Primary School is still unfinished, with work set to recommence next month, and has been dubbed 'the path to nowhere' by locals.

Homeowners have vented their frustrations at developer CALA Homes, which has said all other outstanding works will be completed 'before Christmas'.

Fiona Middleton-Bray, who has lived on Oakwood Gate for a year, said: "They have over-promised and under-delivered every step of the way. They're supposed to be a five-star housebuilder and it's just shocking."

Several residents are fed up



**OAKWOOD** Gate resident Joanne Broughton on the unfinished 'path to nowhere'

Picture: Ed Nix

with the disruption caused by the works and claim communication from CALA has been 'non-existent' throughout.

Joanne Broughton, who lives on Shergold Road, said she awoke on

Wednesday morning to find the pavement at the end of her driveway being relaid for the third time.

She lives with her partner Stuart, who works from home, and six-month-old son, and said the con-

stant works had taken their toll.

Ms Broughton added: "It's almost impossible for my partner to work with the constant noise and disruption, plus we have a baby, so this is far from ideal.

"The development looks a complete mess, with patchwork pavements and roads that have been re-done again and again."

One anonymous homeowner feels the pavements and roads are not wide enough for pushchairs and wheelchairs, but of major concern is the 'path to nowhere'.

Bampton Primary School built a classroom thanks to CALA funding, but headteacher Carol Phillips revealed the site manager had not responded to her invitation to inspect the unfinished footpath.

Residents have also raised safety concerns over the ability of wheelchairs, the elderly and pushchairs to navigate the unsteady surface.

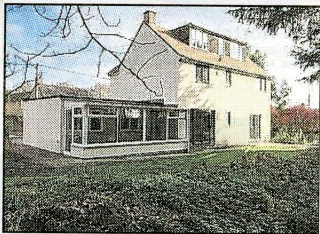
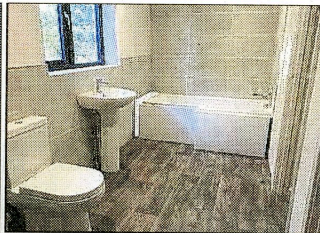
Mrs Middleton-Bray, who lives with her husband and two children, said: "It's so uneven there's a danger of falling."

With more than 90 per cent of houses on the site now sold, CALA is expecting all works to be completed in the next two weeks.

A spokesperson added: "We anticipate the final works on the footpath to the school will commence in January.

"We understand that some customers have felt the disruption of living on a live construction site, and we offer our apologies for any further disruption as we seek to conclude the development works."

January 9<sup>th</sup> 2019



## BAMPTON

**An impressive 4 bedroom property, conveniently situated near the centre of Bampton.**

Renovated & significantly improved with accommodation to include; a porch, hall, 2 receptions, kitchen, cloakroom, conservatory & 2 bathrooms. Set in a good size wide plot with a high degree of privacy, with the additional benefit of a double garage & parking. EPC: F

*Offers In Excess Of £600,000*